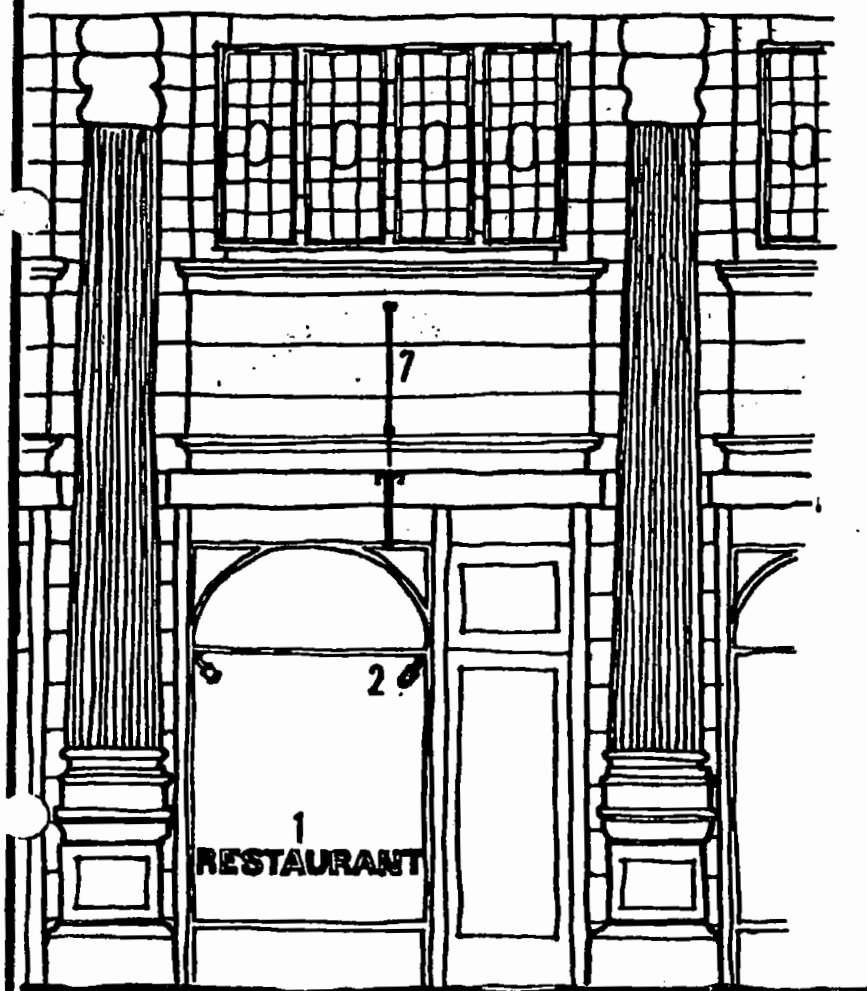


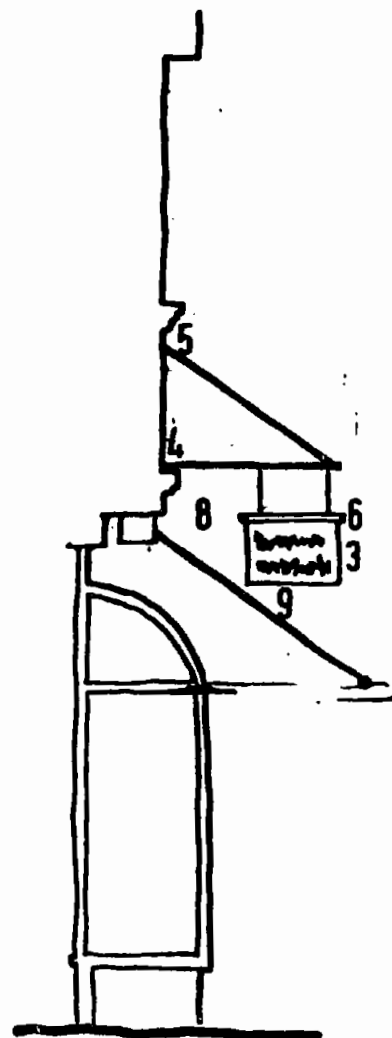
- 1 applied graphics on inside of glass
- 2 internal spot lights on display of goods
- 3 hanging board - max size 600x450mm
- 4 supporting bar positioned directly above cornice
- 5 tie bars fixed to terra cotta blocks above
- 6 concealed fluorescent lighting
- 7 sign located centrally between columns
- 8 top of sign to be level with, or below base of cornice
- 9 sign not to extend out further than is necessary to avoid sun blind

LONDON BOROUGH OF CAMDEN
TOWN AND COUNTRY PLANNING ACTS
- 5 OCT 1982

PLANS ~~NOT APPROVED~~ APPROVED
ON BEHALF OF THE COUNCIL



Elevation-typical bay



Section

CTP/N14/24/9/34240
HB2905

London Borough of Camden

Department of
Planning and Communications
Attn: Street View Team
Telephone: 01-263 4336
Fax: 01-263 4336
Or Architects Dept. 01-263 4336
Or Planning and Communications

Sicilian Avenue Advertising Policy

Location and type of hanging signs

Drawing Number 1A

Case No: N14/21/A

Scale: 1:50

Date: JUNE 1978