

23015
HB1480 (6)

TOP OF DORMER WINDOW
TO BE LEVEL WITH THAT OF
SVENTHE CHAMBERS

4 LB LEAD ON 25 MM
TIMBER DRAFTING

150x80 mm HW CORNER
MOULDING

25 mm THICK FASCIA BOARD

50 mm GLASS FIBRE INSULATION
20x75 mm JOIST
12.5 mm FOIL BACKED PLASTERBOARD
5 mm CARLITE PLASTER FINISH
80x60 mm JOIST
EX 12 mm HALF ROUND
EX 80x50 mm WINDOW HEAD
EX 50x40 mm WINDOW FRAME

EX 80x60 mm TRANSOME

425 mm

1500 mm

SECTION A-A
SCALE 1:2

180x70 mm W/W SILL

WEATHER BAR

SLATE

4 LB LEAD FLASHING

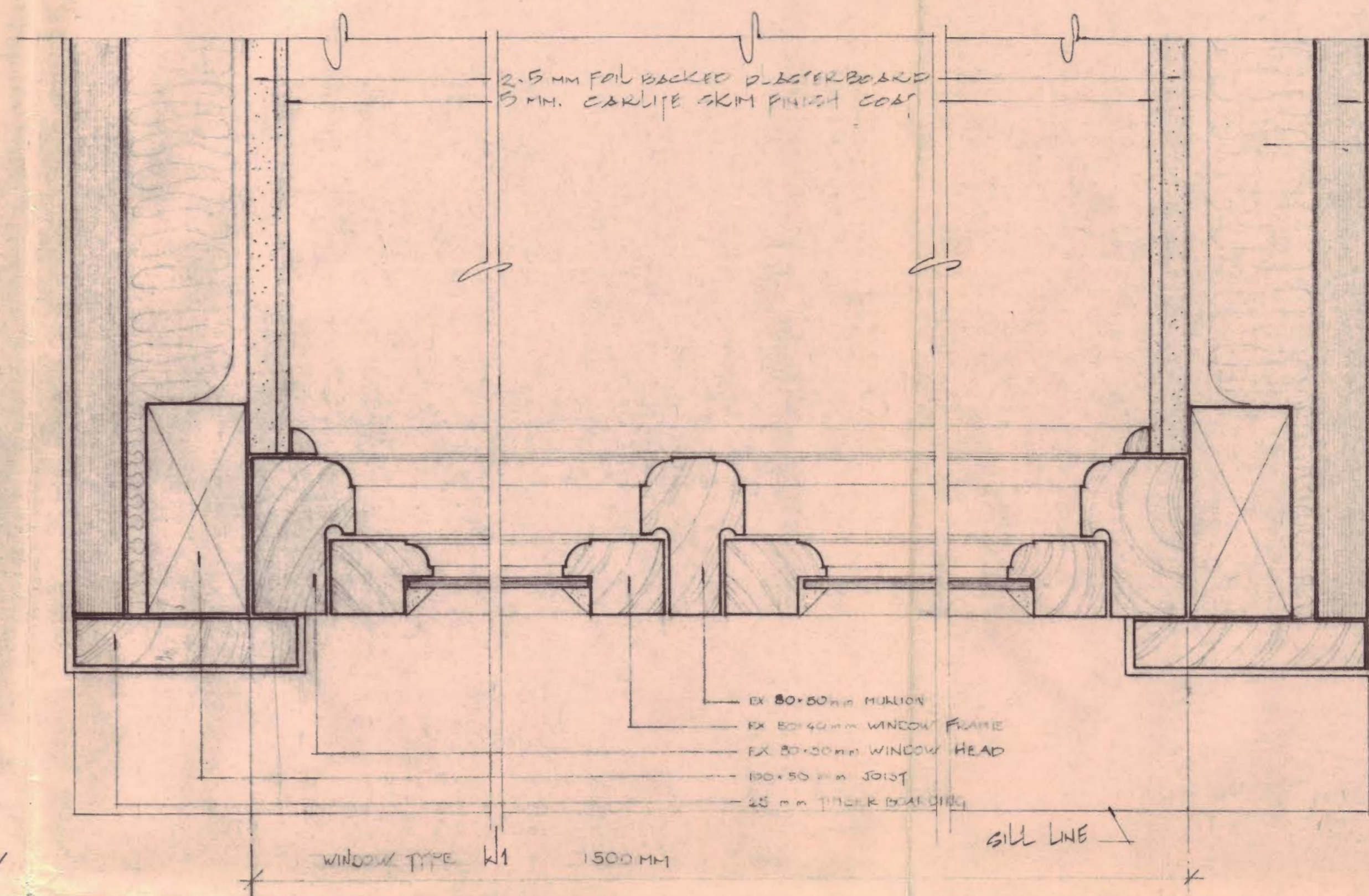
ROOFING FELT

25 mm TIMBER
BOARDING

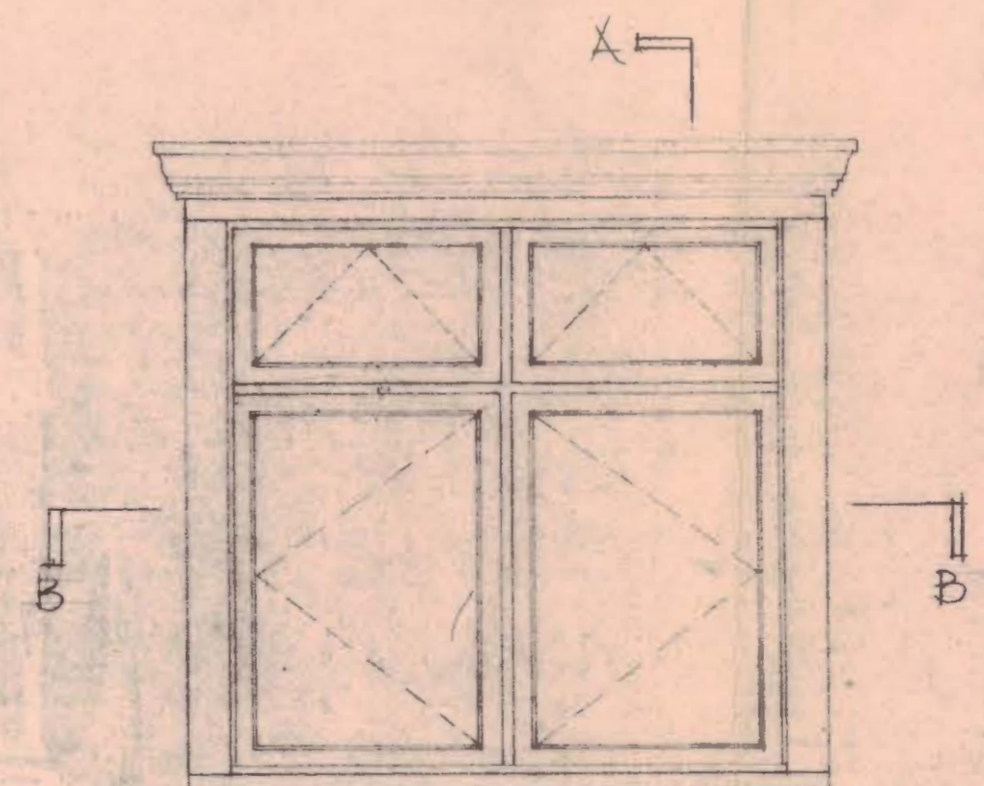
EX 285x20 mm
SILL BOARD

20 mm RAD SW 1/4
ROUND TRIM
12.5 mm THICK
CARLITE PLASTER
15 mm THICK CONC.
BLOCK

102 P.F.L.



SECTION B-B SCALE 1:2



WINDOW ELEVATION SCALE 1:20

LONDON BOROUGH OF CAMDEN
TOWN AND COUNTRY PLANNING ACTS
- 9 NOV 1976
PLANS APPROVED
ON BEHALF OF THE COUNCIL

CTP/N 14/24/97 23015
HB1480

contract title SICILIAN & VERNON HOUSES SICILIAN AVENUE. LONDON.W.C.1	drawing title DORMER WINDOW DETAILS (Type W1)	scale as shown date 9-2-76 drawn M.P.
T P Bennett & Son Chartered Architects 262 High Holborn WC1V 7DU Telephone: 01 405 9277	contract 4209	drawing number 10