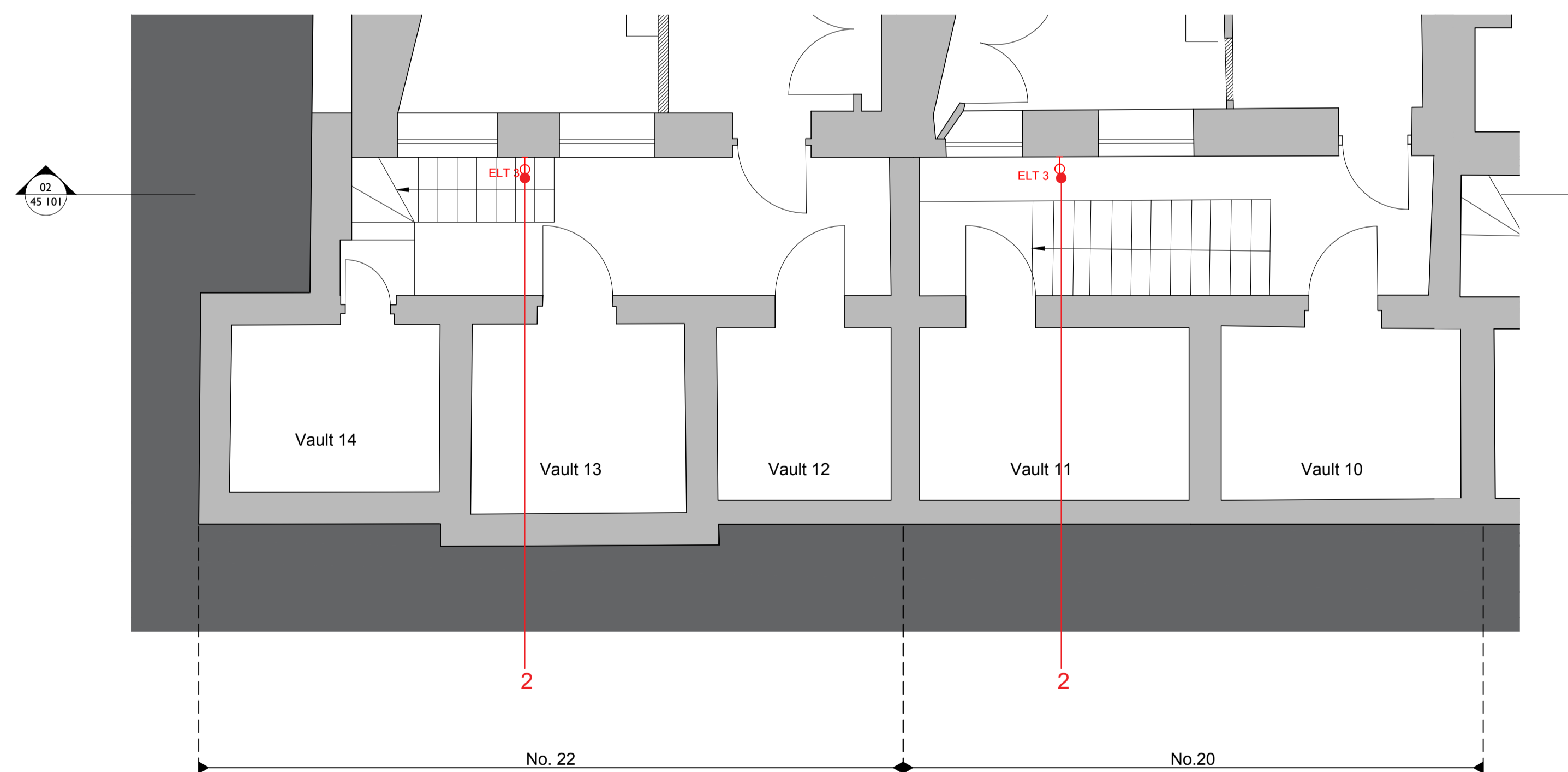


01 Proposed Plans - Lightwell Lighting for No.12-18



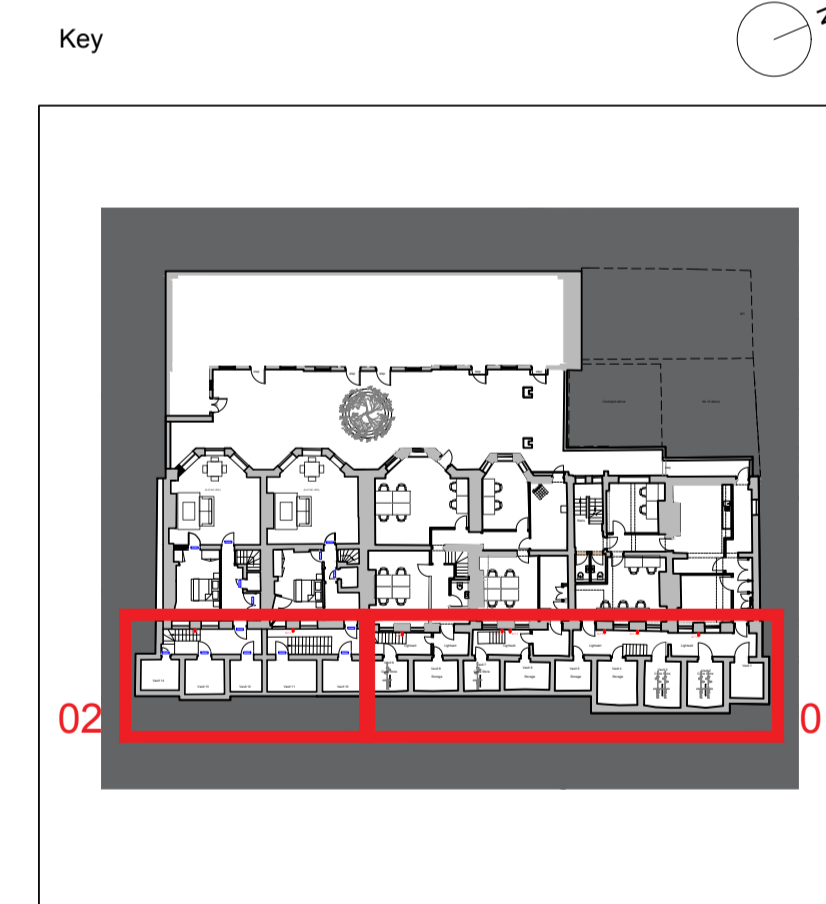
02 Proposed Plans - Lightwell Lighting for No.20-22

- Notes
- Do not scale from this drawing.
 - Dimensions are in millimeters unless stated otherwise.
 - Levels are in metres above AOD unless stated otherwise.
 - All drawings to be read in conjunction with relevant specifications, all relevant engineers and specialists' drawings and specifications + any other documents as specified by Thirdway Architecture.
 - Report any discrepancies in writing to Thirdway Architecture.
 - All dimensions are subject to site survey and are to be verified on site by the contractor before proceeding.

© Thirdway Architecture Ltd

- Key
1. Wall mounted traditional light (ELT-02), Trent Single Light or sim approved, mounted to entrance soffit, with separate PIR motion sensor
 2. Wall mounted light within lightwell (ELT03), Outdoor wall/spike light with integrated PIR motion sensor
- Refer to Design Statement for lighting specifications

Rev.	Date	Description
B	27/05/20	FOR PLANNING
A	06/05/20	FOR PLANNING
-	11/02/20	FOR PLANNING



Project
12-22 Theobalds Road

Client
Ferglen Properties Ltd.

Drawing Title
Proposed Lightwell Plans - Lighting

Scale @ A1
1:50

Scale @ A3
1:100



Morelands 5-23 Old Street London EC1V9HL www.thirdwayarchitecture.com 020 7054 1145

Number
017-TWA-XX-B1-DR-AX-45100

Revision
B

