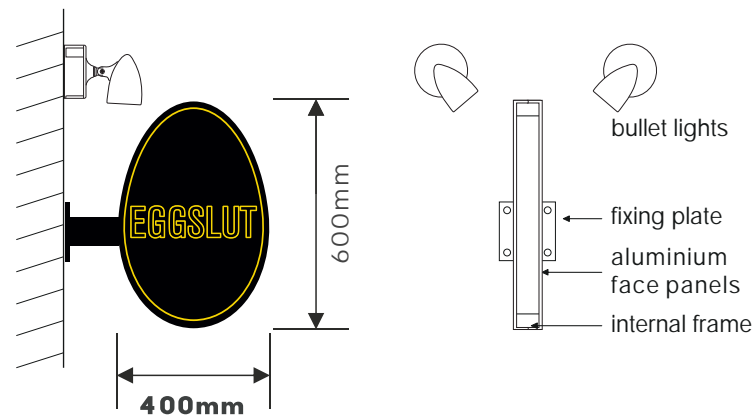
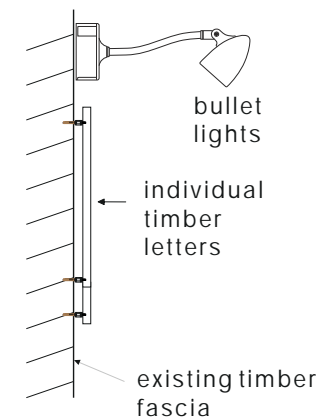
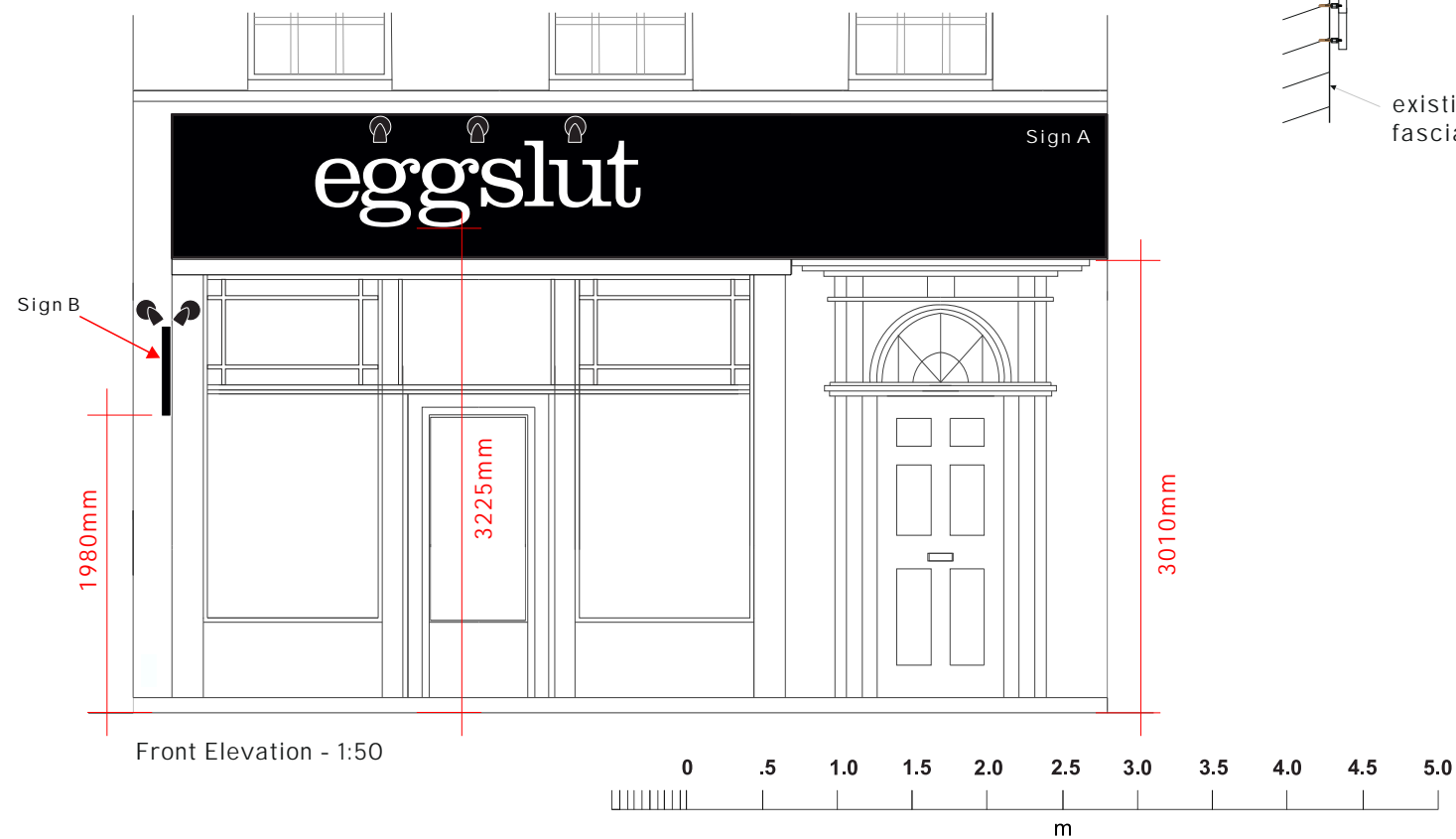


Sign A
One set of externally illuminated timber letters fixed to existing timber fascia.
Letters to be illuminated by bullet lights.
Sizes Fascia area - 6220 x 950mm, Letter e - 327mm, g - 450mm.
G/CI - 3225mm (to underside of G) D - 45mm.



Sign B
One double sided aluminum pictorial sign with applied displays.
illuminated by bullet lights.
Sizes 400 x 600mm, G/CI - 1980mm, D - 140mm.



eggslut

PLANNING
SITE DETAILS

W0009738

NEWSALES

EGGSLUT

PERCY ST, LONDON

27 05 20 dr, A - 01 06 20 dr

COLOURS

WHITE
LETTERS

RICH BLACK
SIGN COLOUR/FACADE

PANTONE 109c
APPLIED DISPLAYS

NB: PLEASE ALWAYS REFERTO
ACTUAL PAINT REFERENCES FOR
AN ACCURATE COLOUR MATCH.



INSIGNIA
SIGNS & SERVICES

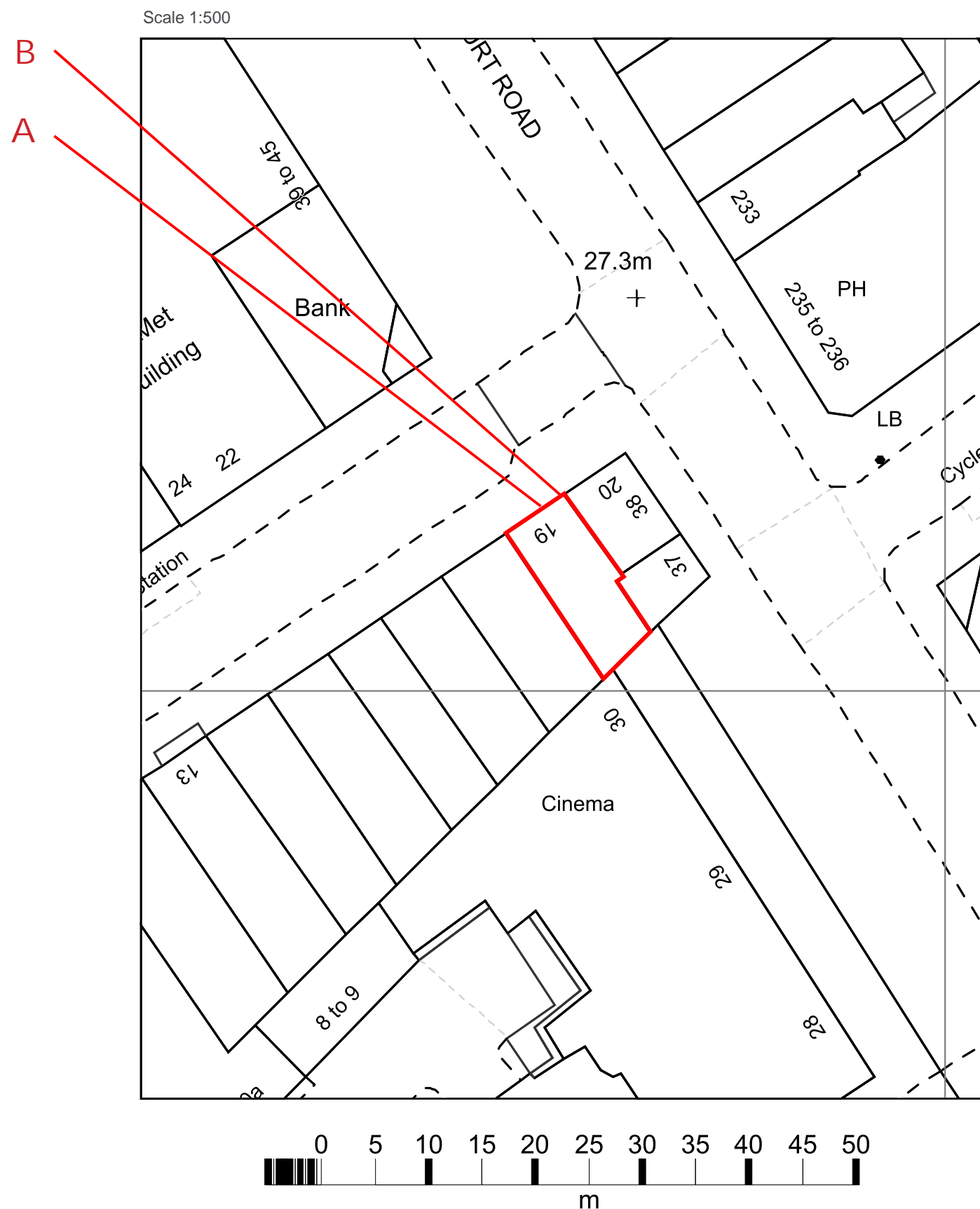
STAND OUT FROM THE CROWD

THIS DOCUMENT IS THE PROPERTY OF
INSIGNIA SIGNS & SERVICES LTD AND
MUST NOT BE COPIED OR REPRODUCED
WITHOUT EXPRESS CONSENT.

0113 243 8533
WWW.INSIGNIASIGNS.BIZ



ALL ILLUMINATED SIGNAGE DOES NOT EXCEED 500CD/M2



eggslut

PLANNING
SITE DETAILS

W0009738

NEWSALES

EGGSLUT

PERCY ST, LONDON

270520dr, A - 010620dr



INSIGNIA
SIGNS & SERVICES

STAND **OUT** FROM THE CROWD

THIS DOCUMENT IS THE PROPERTY OF
INSIGNIA SIGNS & SERVICES LTD AND
MUST NOT BE COPIED OR REPRODUCED
WITHOUT EXPRESS CONSENT.

0113 243 8533
WWW.INSIGNIASIGNS.BIZ