

NEW FRONT DOOR TO 4 HANDEL STREET LONDON WC1N 1PB

DESIGN AND ACCESS STATEMENT

1. BUILDING HISTORY:

This application is for replacement of the front door, frame and fanlight to 4 Handel Street, which is a five storied Grade II Listed Georgian terraced house in the Bloomsbury Conservation Area of Camden.

The building was originally part of a row of eight terraced houses (1 to 8) constructed in c1800 that fronted on to Henrietta Street (now Handel Street). They had small rear gardens and stable blocks that were accessed off Henrietta Mews. In 1888 Henrietta Street was re-named Handel Street. Henrietta Mews and the stable blocks were removed to allow the rear gardens to be enlarged. In the Edwardian period 1, 2, 3 and 8 Handel Street were demolished and the six storied blocks of flats was built at either end of the remaining terrace of houses.

In the 1970's, 4 Handel Street was converted from a single dwelling into five flats, one on each floor. Since that date, various alterations have been made to individual flats. The street facade multi-paned sash windows were replaced with two paned windows. The original solid front door and intricate patterned fanlight was removed. It was replaced with a four paneled, part glazed door and the patterned fanlight changed to a two paned light with a single vertical glazing bar.

2. DESIGN:

The proposal is to completely replace the front door, frame and fanlight and install a new door unit to its original Georgian design.

None of the front doors of 5, 6 and 7 Handel Street match and it is unlikely that any exist from the original construction period. However, all door frames match and are original. The fanlights of 5, 6 and 7 are also original.

It is proposed that the 4 Handel Street door unit is copied from the one at 5 Handel Street, as it is a good example of a Georgian solid paneled door. It is constructed with six panels, the lower two different to the upper four panels. The door also incorporates a mock double leaf achieved with a central vertical moulding. A single brass letterbox is proposed to be installed centrally between the lower four panels with a brass security lock in the side frame.

The door frame is to be copied as the existing and the same as 5, 6 and 7 Handel Street. Both frame and door are to be traditionally constructed in hardwood.

The new fanlight is to be constructed to exactly match the fanlights of 5, 6 and 7 Handel Street with a hardwood main frame and cast iron glazing bars with clear single glazing set in putty.

The original york stone paved entrance steps and door threshold that were removed and replaced with waterproof asphalt are to remain. However, a new york stone door threshold with a bull-nosed leading edge is to be installed in order to provide a horizontal base to the new door unit.

Drawings 1 and 2, together with the Site Photographs illustrate the proposal.

Note:

Advice was taken from the Georgian Group and from Stephen Bull of S.P.A.B., who recommended that the door of 5 Handel Street should be copied as it is the most appropriate example of that architectural period.

3. AMOUNT OF DEVELOPMENT:

Not applicable.

4. USE:

Residential as existing.

5. LAYOUT:

As existing.

6. SCALE:

As existing.

7. APPEARANCE:

As described in 2. Design above. The door, frame and fanlight frames are to be painted black. The single glazing in the fanlight is to be clear set in putty and also painted black. The ironmongery is to be brass. The door threshold is to be a single section of traditional york stone.

8. LANDSCAPING:

Not applicable.

9. ACCESS:

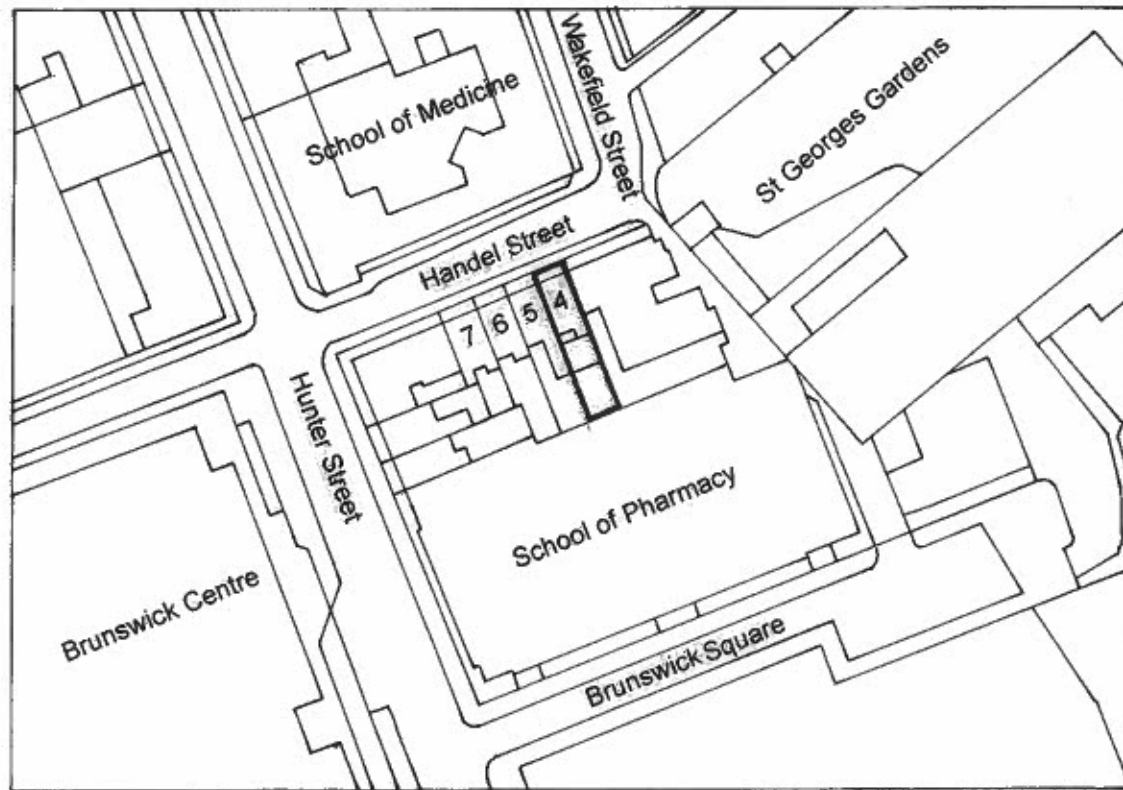
As existing.

Michael Lowe
Architect

18 February 2014

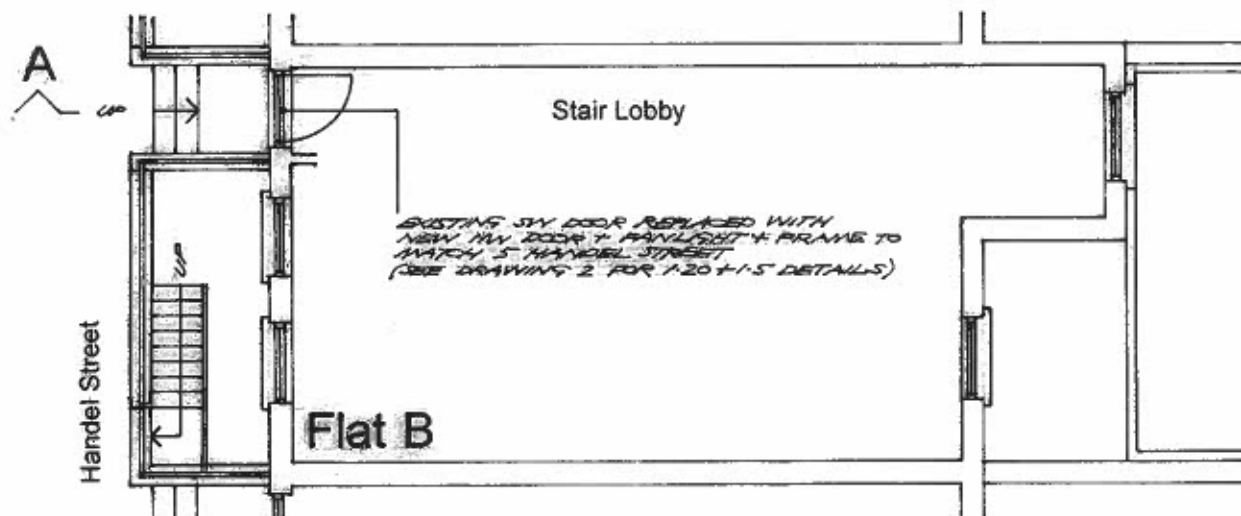
NEW FRONT DOOR TO 4 HANDEL STREET LONDON WC1N 1PB

1

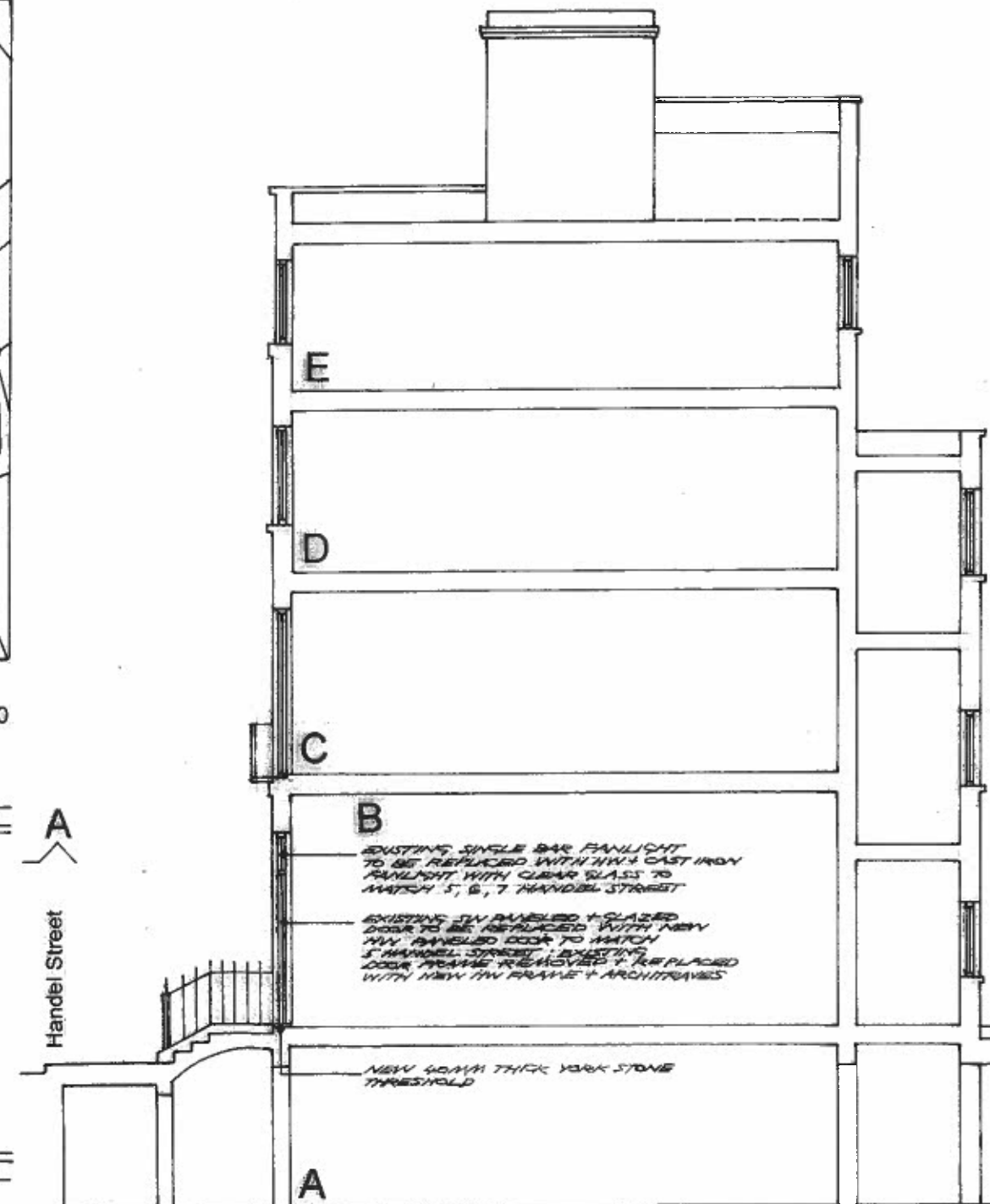


Location Plan

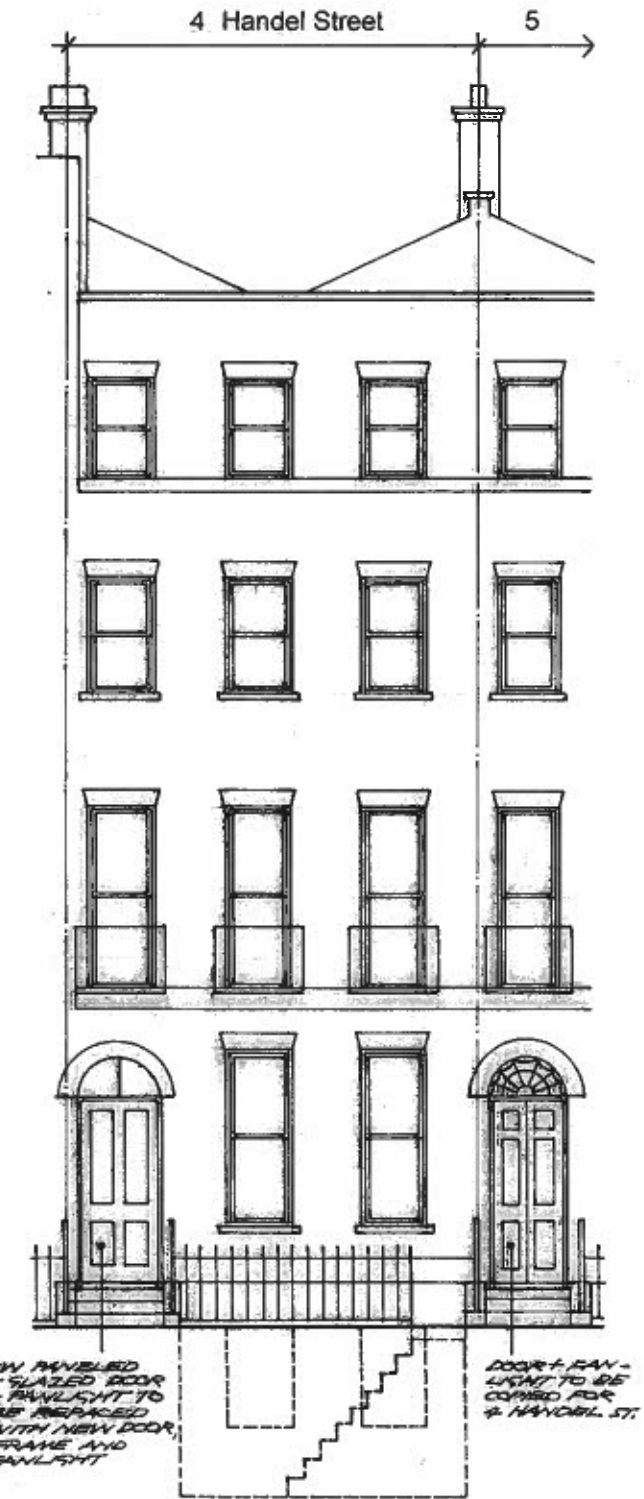
Scale: 1:1250



Ground Floor Plan



Section A.A

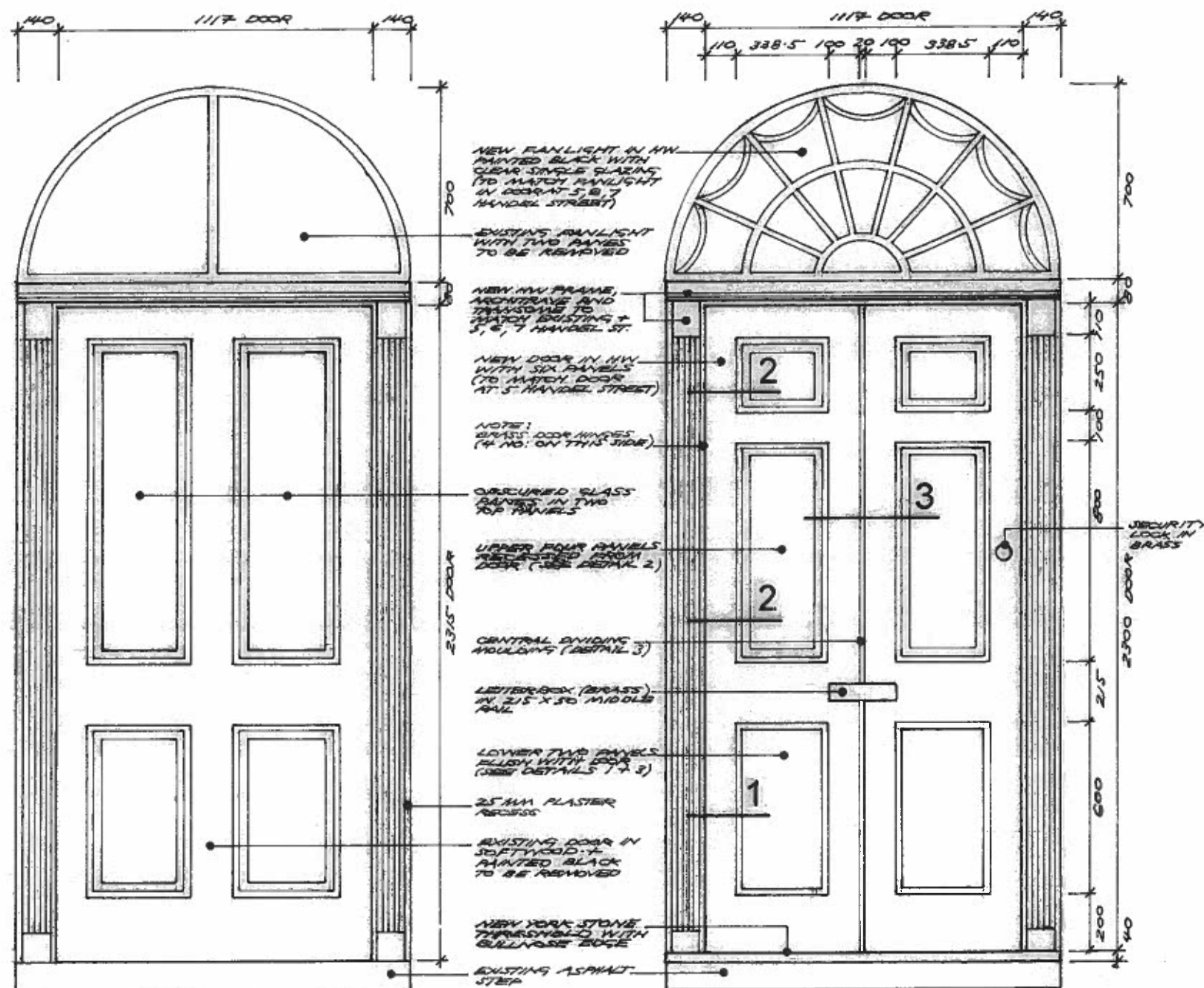


Existing Street Facade

NEW FRONT DOOR TO 4 HANDEL STREET LONDON WC1N 1PB

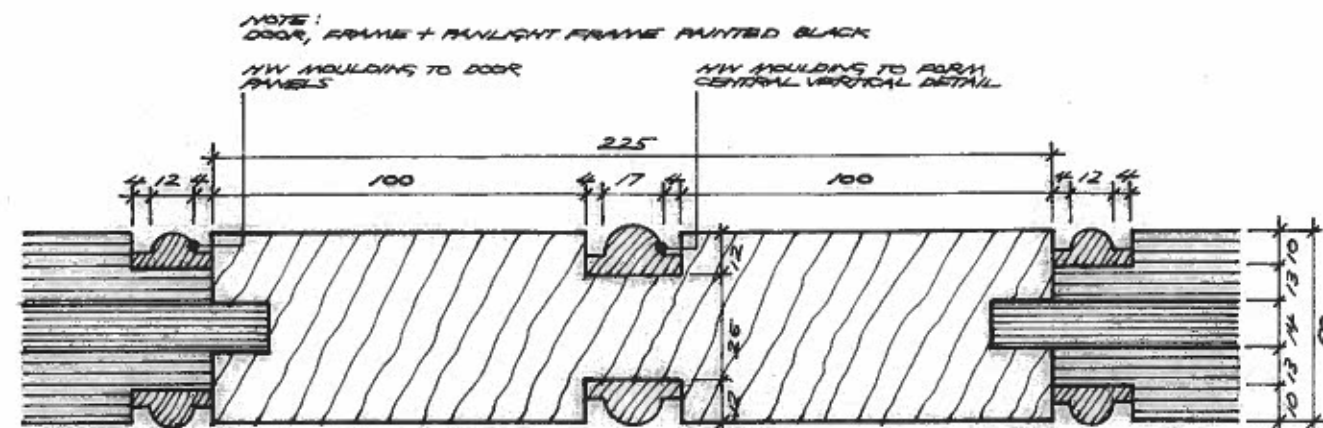
2

Door Details

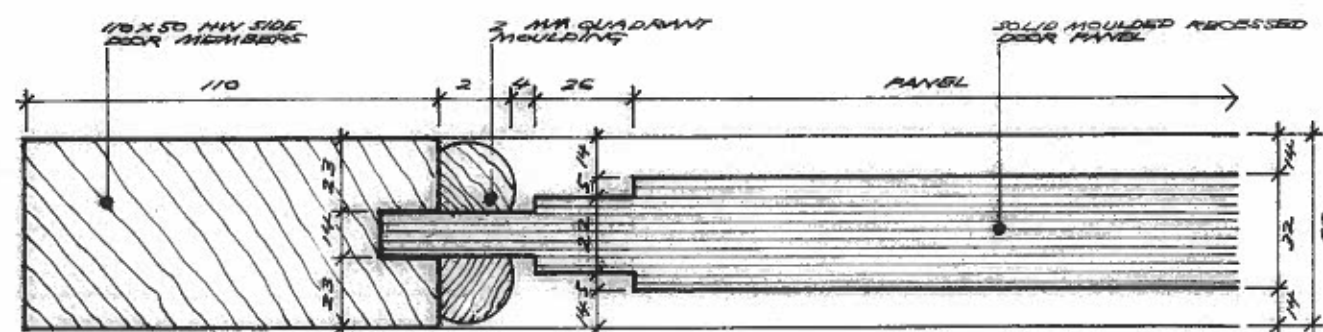


Existing Door Elevation

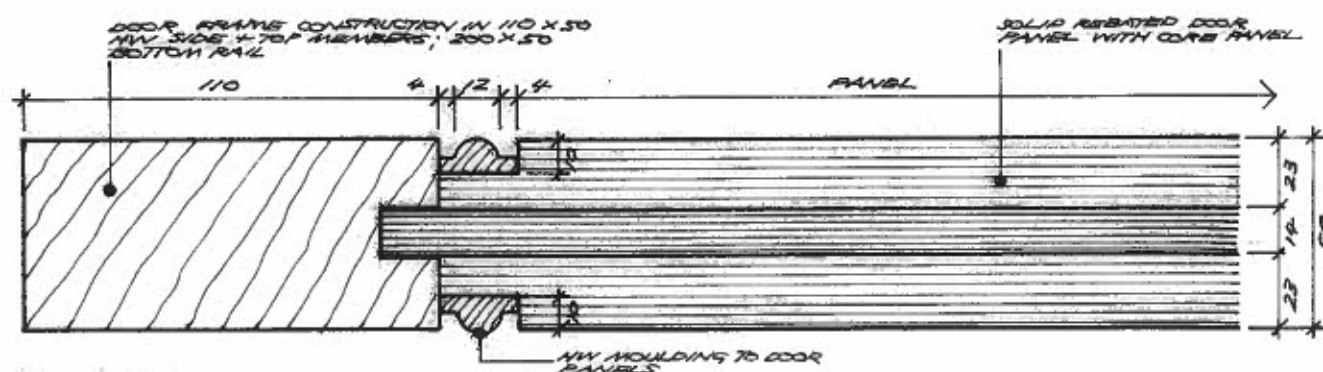
Proposed Door Elevation



Detail 3



Detail 2



Detail 1
Scale: 1:5

NEW FRONT DOOR TO 4 HANDEL STREET LONDON WC1N 1PB

SITE PHOTOGRAPHS:



1. View of 4 Handel Street showing front door (frame, door and fanlight to be replaced) and adjoining 5 Handel Street (front door, frame and fanlight to be copied)



2. Oblique view of 4 Handel Street and part of 5 Handel Street

NEW FRONT DOOR TO 4 HANDEL STREET LONDON WC1N 1PB

SITE PHOTOGRAPHS:



3. Close up view of 4 Handel Street front door (frame, door and fanlight to be replaced)



4. Close up view of 5 Handel Street front door (frame, door and fanlight to be copied)

NEW FRONT DOOR TO 4 HANDEL STREET LONDON WC1N 1PB

SITE PHOTOGRAPHS:



5. Oblique view of 4 Handel Street front door (frame, door and fanlight to be replaced)



6. Oblique view of 5 Handel Street front door (frame, door and fanlight to be copied)

NEW FRONT DOOR TO 4 HANDEL STREET LONDON WC1N 1PB

SITE PHOTOGRAPHS:



7. Close up view of 6 Handel Street fanlight which is identical to 5 Handel Street (to be copied)



8. Close up view of 7 Handel Street fanlight which is identical to 5 and 6 Handel Street (to be copied)