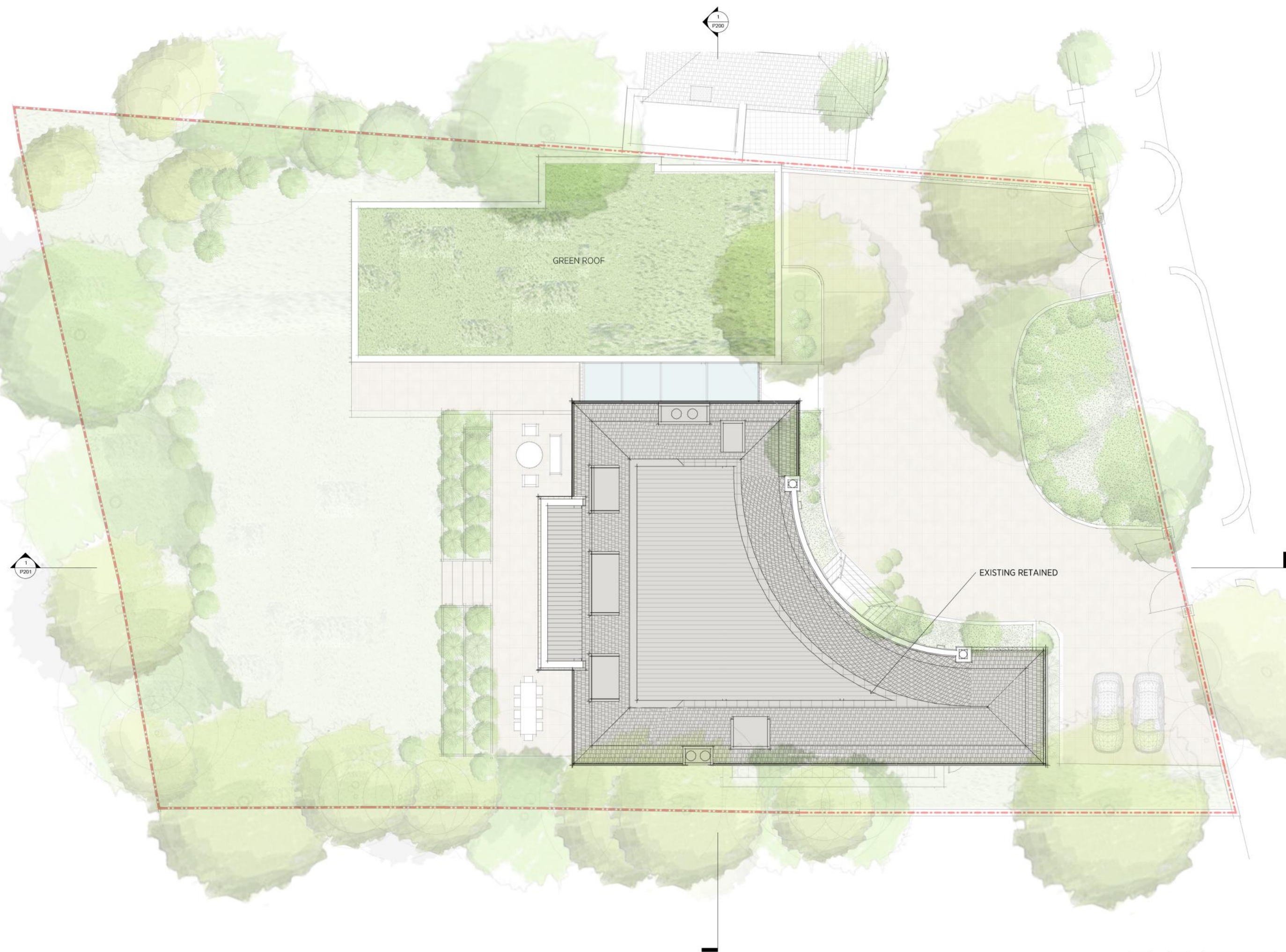


General Notes
 This drawing is copyright of KSR architects. This drawing must be read in conjunction with the Designer's Risk Assessment, specification and all other relevant documentation and drawings.
 KSR architects accept no liability for any expense, loss or damage of whatever nature and however arising from any variation made to this drawing or in the execution of the work to which it relates which has not been referred to them and their approval obtained.
 Areas are based on uncheckered survey and are approximate only. Do not scale from this drawing or the digital files, only figure dimensions are to be used. Refer to figure scale for guidance.
 Check all dimensions on site prior to carrying out any works and advise any discrepancy.



1
P201

1
P200

GREEN ROOF

EXISTING RETAINED

Rev	Description	Date	By
Status:	Planning		



KSR ARCHITECTS & INTERIOR DESIGNERS
 KSR architects LLP
 14 Greenland Street
 London NW1 0NP
 www.ksrarchitects.com
 t: +44 (0)20 7650 5000
 www.ksrinteriors.com

Project:
69 Avenue Road

Drawing Title:
Roof Plan

Date of first issue: 31/01/20
 Scale: 1:100 @A1 / 1:50 @A3

Drawn By: MF
 Checked By: DC
 © KSR Architects

Drawing No.: **18030-P130**

