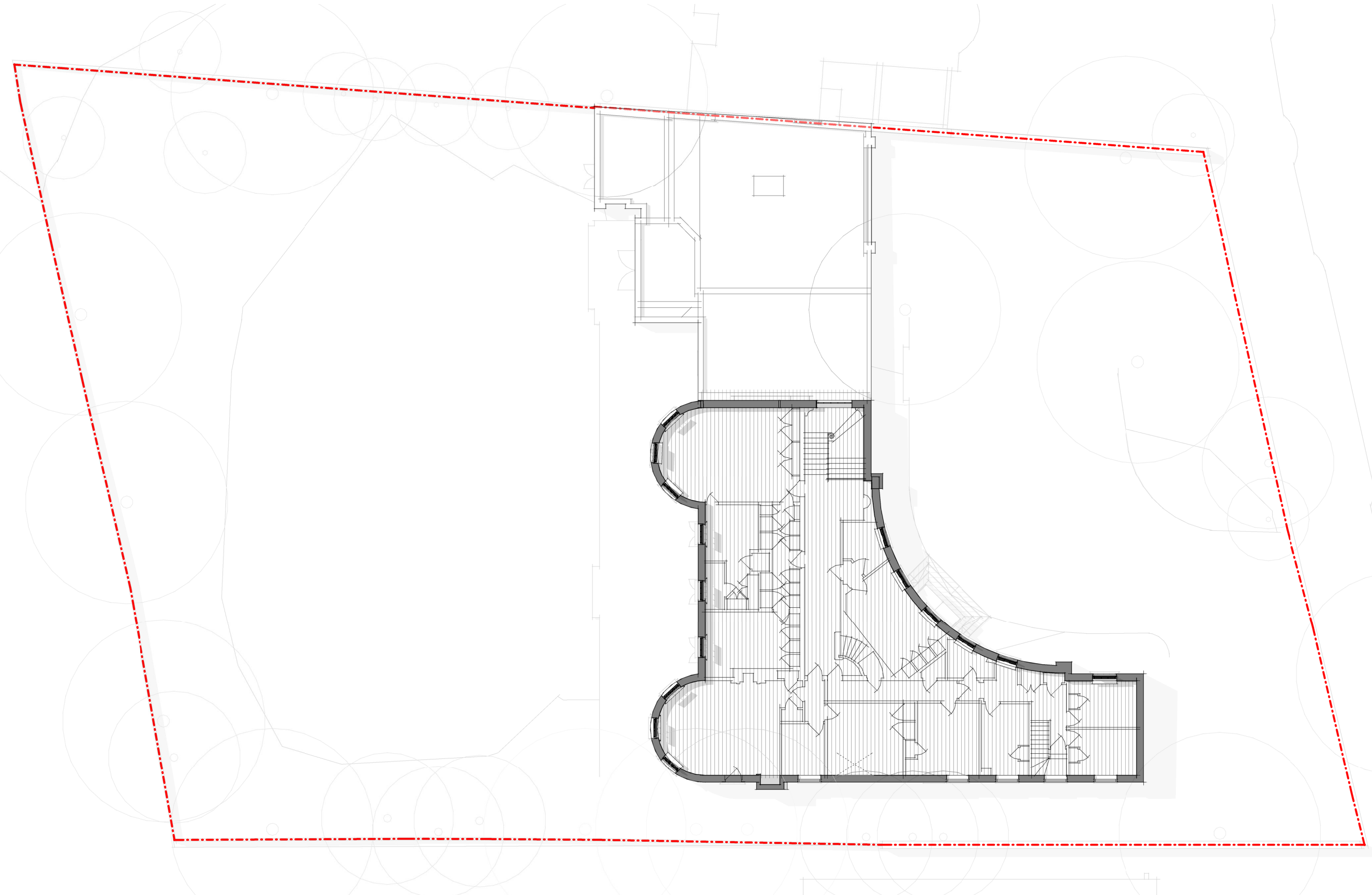


General Notes
 This drawing is copyright of KSR architects. This drawing must be read in conjunction with the Designer's Risk Assessment, specification and all other relevant documentation and drawings.
 KSR architects accept no liability for any expense, loss or damage of whatsoever nature and however arising from any situation made to this drawing or in the execution of the work to which it relates which has not been referred to them and their approval obtained.
 Areas are based on uncheckered survey and are approximate only. Do not scale from this drawing or the digital data, only figured dimensions are to be used. Refer to linear scale for guidance.
 Check all dimensions on site prior to carrying out any works and advise any discrepancy.



| Rev | Description | Date | By |
|---------|-------------|------|----|
| Status: | | | |



KSR ARCHITECTS & INTERIOR DESIGNERS
 KSR Architects Ltd. info@ksrarchitects.com
 14 Grosvenor Street E 44 (0)20 7692 5000
 London NW1 0NP www.ksrarchitects.com

Project:
69 Avenue Road

Drawing Title:
Existing First Floor Plan

Date of first issue: 31/01/20 Scale:

Drawn By: MF Checked By: DC © KSR Architects

Drawing No: **18030-X110** Rev:

