

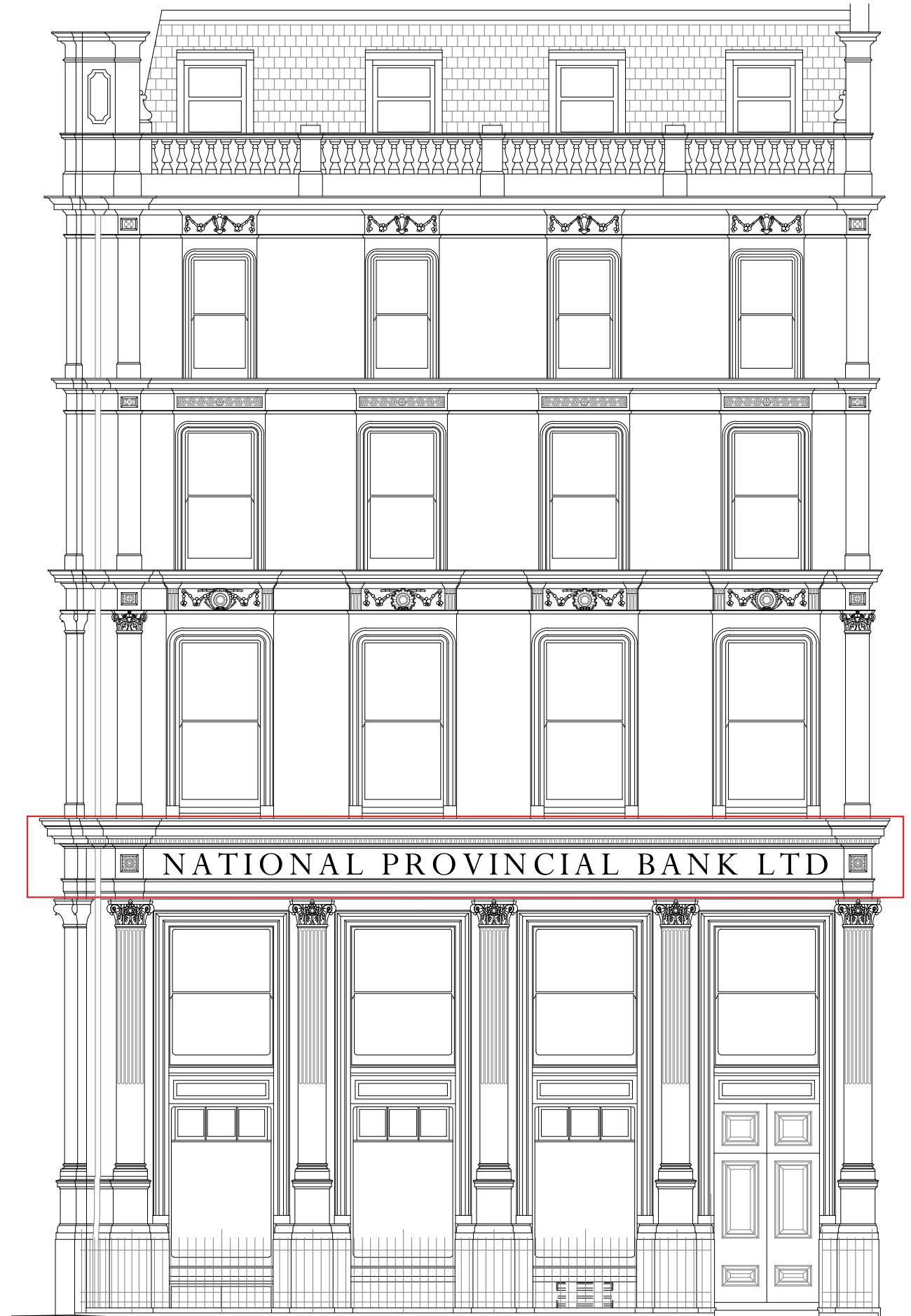
2.4 Existing Elevations

Existing Charterhouse Street Elevation



2.4 Existing Elevations

Existing Ely Place Elevation



3. Previous Advertising

3.1 Natwest

3.2 Previous Signage

In its previous use the Ground Floor of 1 Ely Place housed a Natwest bank until it closed in 2018. Natwest installed a plant-on signboard displaying their branding which has since been removed. Beneath this signage is what is believed to be the original hand painted signage band.



3. Proposed Signage

3.1 Reasoning

3.2 Proposed Plan

3.3 Proposed Elevations

3.4 Proposed Detail