

GENERAL NOTES

THIS DRAWING IS © CUBE DESIGN LTD

CONTRACTORS MUST CHECK ALL DIMENSIONS ON SITE. ONLY FIGURED DIMENSIONS ARE TO BE WORKED FROM. DISCREPANCIES MUST BE REPORTED TO THE ARCHITECT BEFORE PROCEEDING

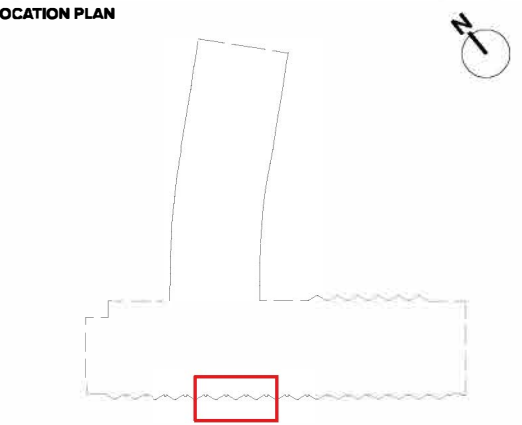
WHEN THIS DRAWING IS ISSUED IN DWG FORMAT CUBE DESIGN TAKE NO RESPONSIBILITY OR LIABILITY FOR THE USE AND/OR ADJUSTMENT OF THESE LAYOUTS BY A THIRD PARTY. THE USE OF THIS INFORMATION IS AT THE USER'S RISK.

THIS DRAWING SHOULD BE VIEWED / PRINTED IN COLOUR.

NOTE:

Further consultation to be done with manufacturer of grill to confirm fixing and framing.

REVISIONS				
REV	DATE	DESCRIPTION	DRWN	CHKD
A	18/02/20	Initial Issue.	LGB	JLS



cube_design
architecture interior design graphics

Unit 12, Headlands Business Park, Salisbury road
Ringwood, Hampshire, BH24 3PB

Tel: 01425 481 999

e-mail: maildesk@cube-designltd.co.uk
www.cube-designltd.co.uk

PROJECT
Imperial Hotel
Russell Square, London

DRAWING TITLE
01 - ENABLING WORKS
Pavement Grille Plan - UKPN Works

STATUS
FOR COMMENT

DATE DRAWN 17/02/2020	DRAWN BY LGB
SCALE 1:20 @ A1 1:40 @ A3	CHECKED BY JLS

DRAWING NUMBER									
project	originator	zone	level	type	role	number	rev		
1289-CDL-01-00-DR-A-20033-A									

