

## General Notes:

- The drawing does not necessarily show all the information needed to interpret the design intent or the construction details.
- The drawing contains information from more than one source and must be read in conjunction with all relevant specifications.
- Any apparent drafting errors and differences between other drawings and specifications shall be brought to our attention.

## Project Notes:

- THIS DRAWING TO BE READ IN CONJUNCTION WITH ALL OTHER RELEVANT DRAWINGS AND SPECIFICATIONS.
- DO NOT SCALE FROM THIS DRAWING.

## LEGEND

	HEATING MANIFOLD AND REFERENCE
	RADIATOR AND REFERENCE
	PIPEWORK WITHIN FLOOR VOID
	PIPEWORK WITHIN CEILING VOID
	PIPEWORK AT LOW LEVEL
	WET UFH
	ELECTRIC UFH

## CDM Pre-Construction Information

The following information is provided in accordance with Regulation 9 of the CDM Regulations 2015:

NO SIGNIFICANT RISK ARE IDENTIFIED WITH REGARDS TO THESE WORKS

## Project Title

42 BEDFORD SQUARE  
LONDON

## Drawing Title

GROUND FLOOR  
LTHW SPACE HEATING SERVICES  
LAYOUT

www.hoarelea.com



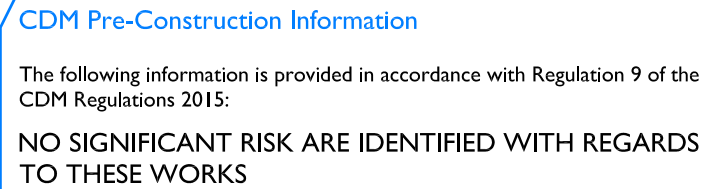
## PLANNING - FOR APPROVAL

Drawn by	Designed by	Reviewed by
GC	IDO	NH
Project No	Date	Scale @ A1
0209223	22/11/2017	1:50@ A1
DRAWING NUMBER		Revision
HL-BBS-BSQ-ME-000-122		10

10	AMENDED TO BDP COMMENTS	JW	NH	12/17
09	AMENDED UNDER FLOOR HEATING	IDO	NH	12/17
08	AMENDED TO BDP COMMENTS	IDO	NH	12/17
07	LTHW SYSTEM AMENDED AND MEWS OMITTED	IDO	NH	11/17
06	ARCHITECT XREF UPDATED	GC	IDO	11/17

Index	Description	Drawn & Ck'd by	Rev'd by	Date
Revisions				
CAD ORIGINAL - NOT TO BE MODIFIED BY HAND				

Architectural drawing of the Ground Floor Mezzanine. The drawing shows a staircase on the left, a window with a cross-hatch pattern in the center, and a mezzanine store area on the right. The drawing is labeled with grid lines C, D, E, and F. A callout indicates a window specification: "L TO R 35x220 HWS F&R RFB 280 CAT 5, 350 SBCW, 350 PBCW, RFB & RTA". The text "M.D1 MEZZANINE STORE" is located below the window.



Project Title

42 BEDFORD SQUARE  
LONDON

Drawing Title

GROUND FLOOR  
DOMESTIC WATER SERVICES LAYOUT

[www.hoarelea.com](http://www.hoarelea.com)



HOARE  
LEA

## PLANNING - FOR APPROVAL

Drawn by	Designed by	Reviewed by
GC	IDO	NH
Project No	Date	Scale @ A1
0209223	22/11/2017	1:50@ A1
DRAWING NUMBER		Revision
HL-BBS-BSQ-ME-000-132		07

**General Notes:**

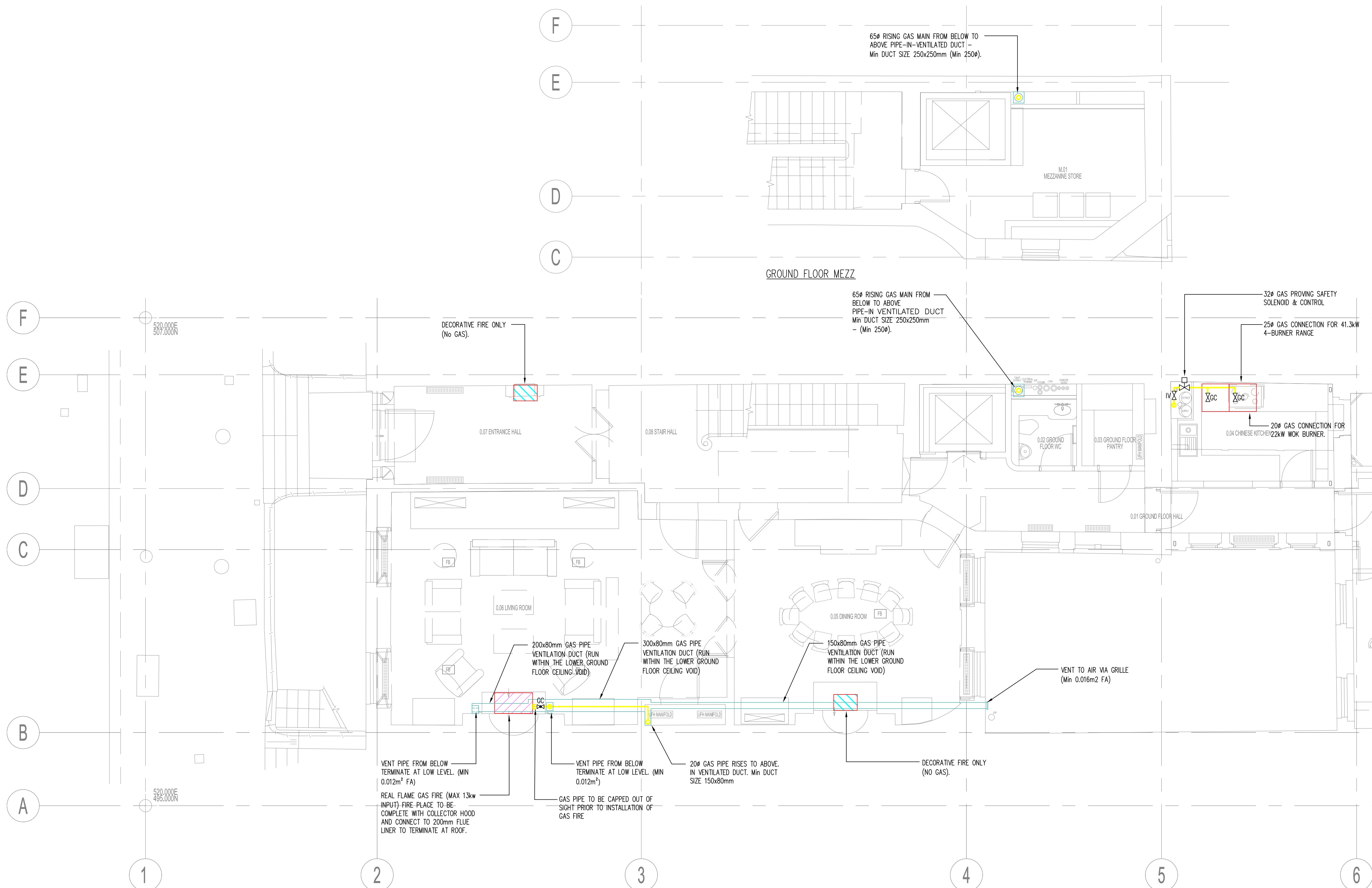
- The drawing does not necessarily show all the information needed to interpret the design intent or the construction details.
- The drawing contains information from more than one source and must be read in conjunction with all relevant specifications.
- Any apparent drafting errors and differences between other drawings and specifications shall be brought to our attention.

**Project Notes:**

1. THIS DRAWING TO BE READ IN CONJUNCTION WITH ALL OTHER RELEVANT DRAWINGS AND SPECIFICATIONS.
2. DO NOT SCALE FROM THIS DRAWING.

07	AMENDED TO BDP COMMENTS	JW	NH	12/17
06	AMENDED TO BDP COMMENTS	IDO	NH	12/17
05	MEWS OMITTED	IDO	NH	11/17
04	ARCHITECT XREF UPDATED	GC	IDO	11/17
Index	Description	Drawn & Chk by	Rev'd by	Date
<b>Revisions</b>				
CAD ORIGINAL - NOT TO BE MODIFIED BY HAND				





## General Notes:

- The drawing does not necessarily show all the information needed to interpret the design intent or the construction details.
- The drawing contains information from more than one source and must be read in conjunction with all relevant specifications.
- Any apparent drafting errors and differences between other drawings and specifications shall be brought to our attention.

## Project Notes:

- THIS DRAWING TO BE READ IN CONJUNCTION WITH ALL OTHER RELEVANT DRAWINGS AND SPECIFICATIONS.
- DO NOT SCALE FROM THIS DRAWING.
- TO BE INSTALLED IN ACCORDANCE WITH TECHNICAL SUBMITTAL:- TSM0017 GAS PIPEWORK

## LEGEND:

- BURIED PIPE WORK WITHIN NEW FLOOR
- LOW LEVEL PIPEWORK
- HIGH LEVEL PIPEWORK
- GAS PIPEWORK
- VENT PIPEWORK/DUCTWORK
- GAS MAIN WITHIN VENTILATED SLEEVE (PIPE-IN-PIPE)
- GAS APPLIANCE
- NONE GAS APPLIANCE

## CDM Pre-Construction Information

The following information is provided in accordance with Regulation 9 of the CDM Regulations 2015:

NO SIGNIFICANT RISK ARE IDENTIFIED WITH REGARDS TO THESE WORKS

## Project Title

42 BEDFORD SQUARE  
LONDON

## Drawing Title

GROUND FLOOR  
GAS SERVICES LAYOUT

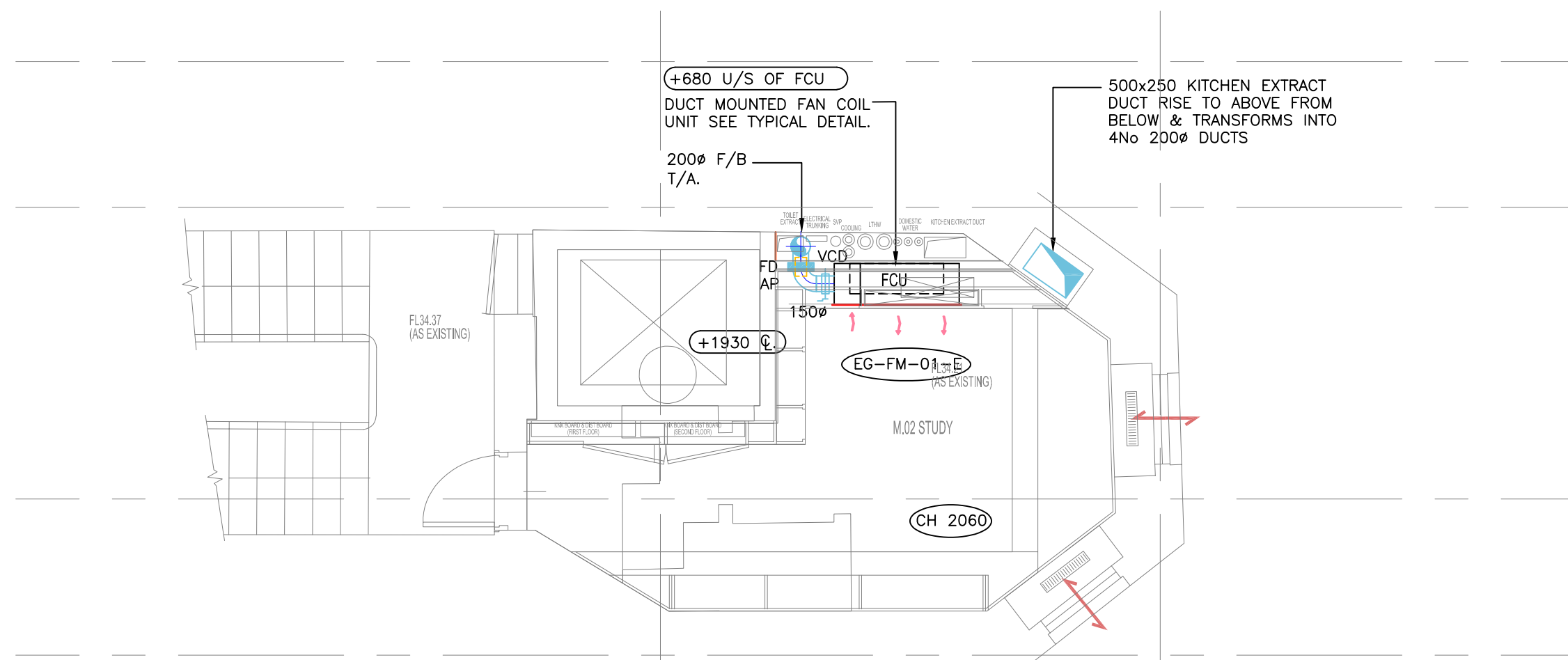
www.hoarelea.com



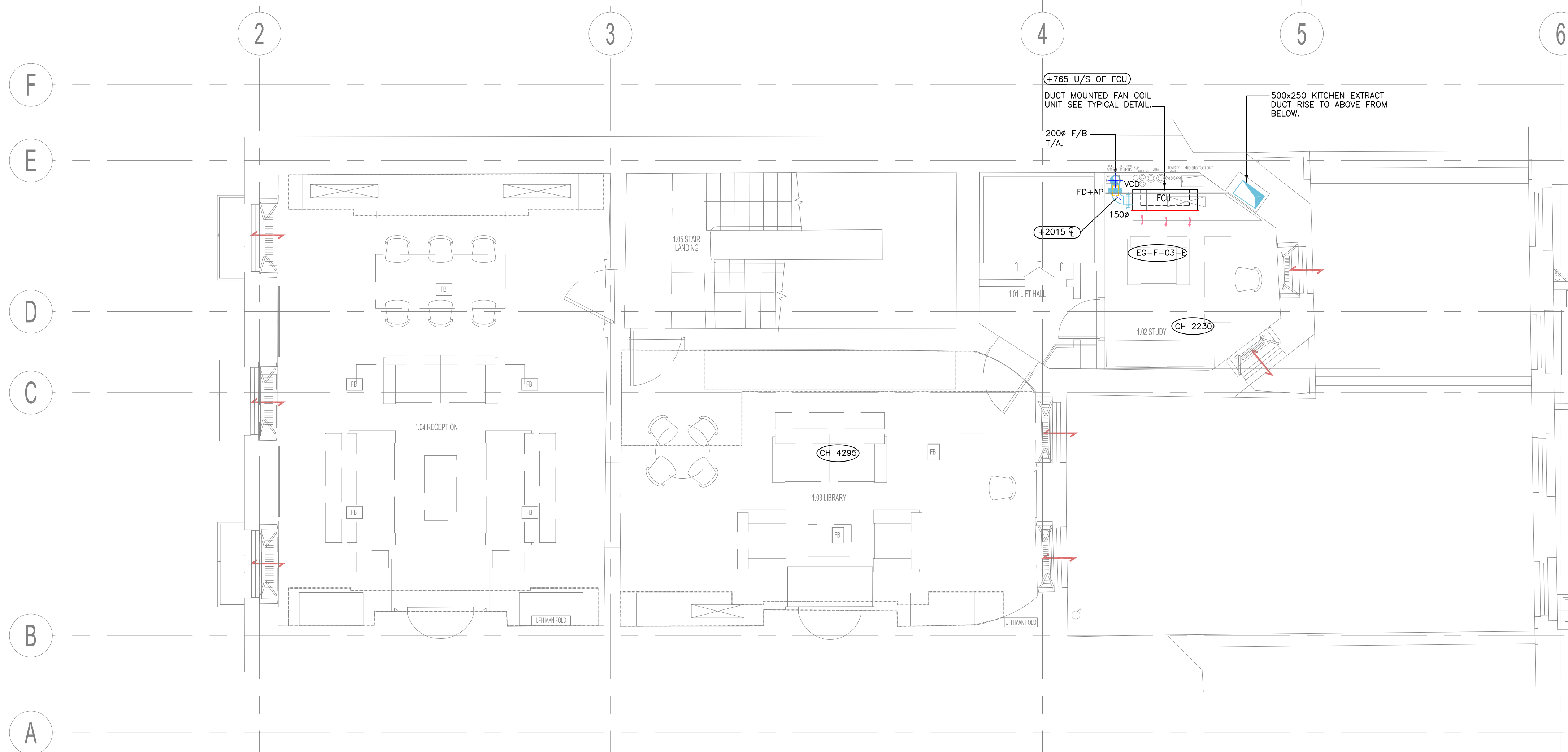
## PLANNING - FOR APPROVAL

Drawn by	Designed by	Reviewed by
GC	IDO	NH
Project No	Date	Scale @ A1
0209233	22/11/2017	1:50 @ A1
DRAWING NUMBER		Revision
HL-BBS-BSQ-ME-000-152		08

Index	Description	Drawn & Ck'd by	Rev'd by	Date
08	AMENDED TO BDP COMMENTS	JW	NH	12/17
07	AMENDED LIVING ROOM GAS OUTLET	IDO	NH	12/17
06	AMENDED TO BDP COMMENTS	IDO	NH	12/17
05	ARCHITECT XREF UPDATED	GC	IDO	11/17
Revisions				
CAD ORIGINAL - NOT TO BE MODIFIED BY HAND				



FIRST FLOOR MEZZANINE



## General Notes:

- The drawing does not necessarily show all the information needed to interpret the design intent or the construction details.
- The drawing contains information from more than one source and must be read in conjunction with all relevant specifications.
- Any apparent drafting errors and differences between other drawings and specifications shall be brought to our attention.

## Project Notes:

- THIS DRAWING TO BE READ IN CONJUNCTION WITH ALL OTHER RELEVANT DRAWINGS AND SPECIFICATIONS.
- DO NOT SCALE FROM THIS DRAWING.

## CDM Pre-Construction Information

The following information is provided in accordance with Regulation 9 of the CDM Regulations 2015:

NO SIGNIFICANT RISK ARE IDENTIFIED WITH REGARDS TO THESE WORKS

## Project Title

42 BEDFORD SQUARE  
LONDON

## Drawing Title

FIRST FLOOR  
VENTILATION SERVICES LAYOUT

www.hoarelea.com



## PLANNING - FOR APPROVAL

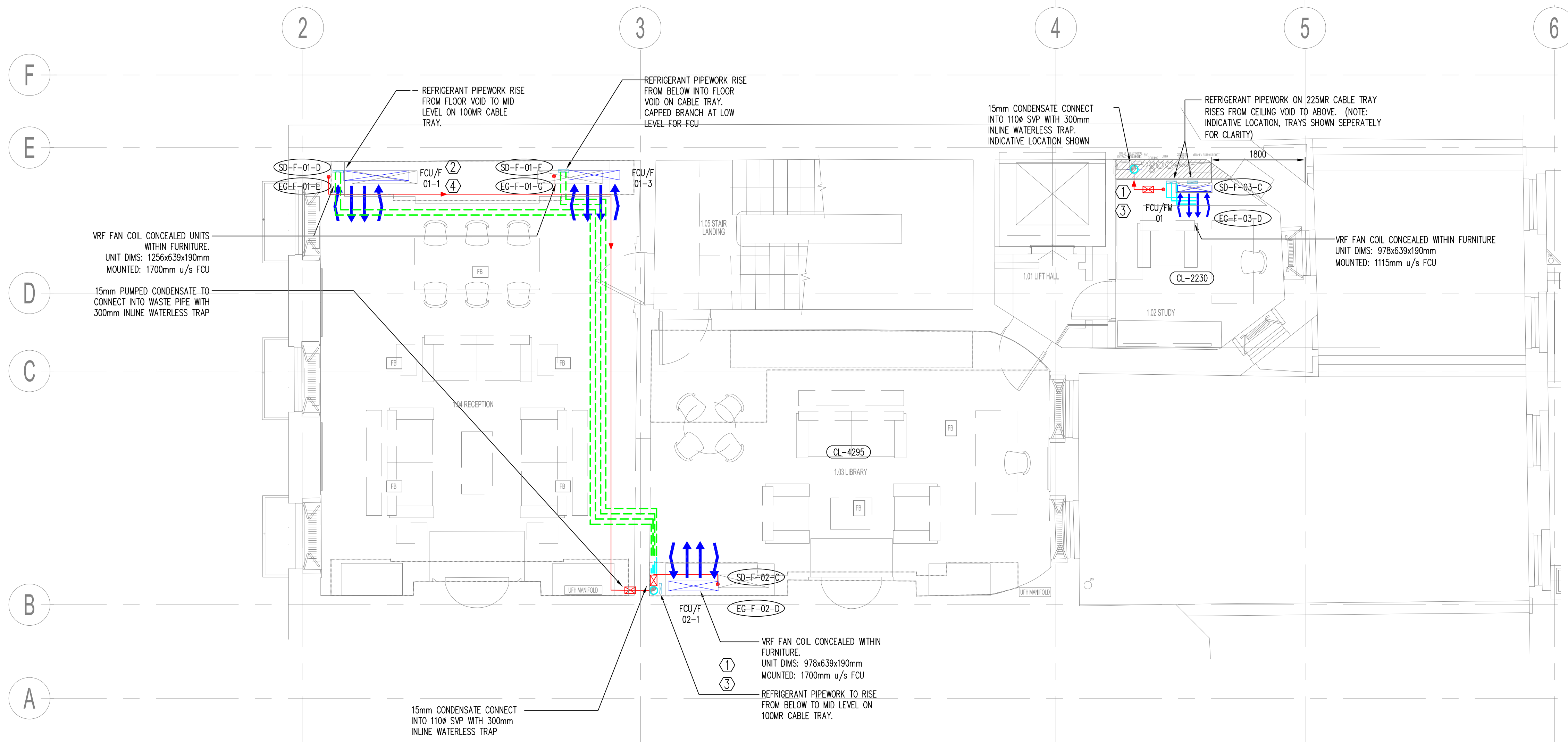
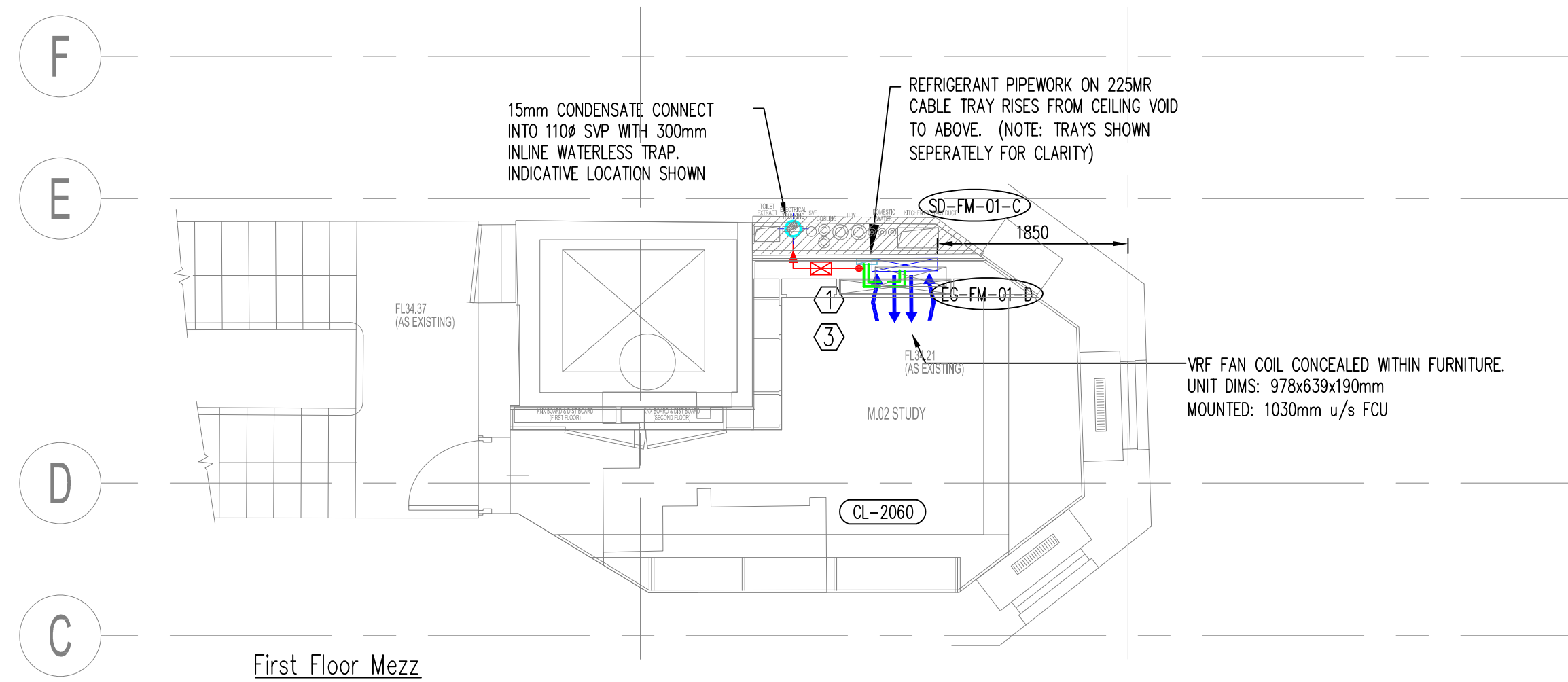
Drawn by	Designed by	Reviewed by
GC	IDO	NH
Project No	Date	Scale @ A1
0209233	22/11/2017	1:50 @ A1
DRAWING NUMBER		Revision
HL-BBS-BSQ-ME-100-103		10

Index	Description	Drawn & Cln by	Rev'd by	Date
10	XREF UPDATED	IDO	NH	12/17
09	AMENDED TO BDP COMMENTS	IDO	NH	12/17
08	LIBRARY EXTRACT AND MEWS OMITTED	GC	IDO	11/17
07	ARCHITECT XREF AND KITCHEN EXTRACT UPDATED	GC	IDO	11/17

## Revisions

CAD ORIGINAL - NOT TO BE MODIFIED BY HAND





## General Notes:

- The drawing does not necessarily show all the information needed to interpret the design intent or the construction details.
- The drawing contains information from more than one source and must be read in conjunction with all relevant specifications.
- Any apparent drafting errors and differences between other drawings and specifications shall be brought to our attention.

## Project Notes:

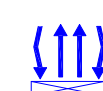
- THIS DRAWING TO BE READ IN CONJUNCTION WITH ALL OTHER RELEVANT DRAWINGS AND SPECIFICATIONS.
- DO NOT SCALE FROM THIS DRAWING.
- ALL CONDENSATE PIPWORK SHALL HAVE A MINIMUM FALL OF 1:100 TO ENSURE EFFECTIVE DRAINAGE
- HB BOXES LOCATED WITHIN THE LOWER GROUND FLOOR CEILING VOID & THE THIRD FLOOR ROOF VOID.



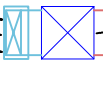
REFRIGERANT PIPEWORK IN CEILING JOIST/BEHIND FURNITURE ZONE

REFRIGERANT PIPEWORK IN FLOOR JOIST ZONE

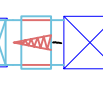
CONDENSATE PIPEWORK IN LOCATION DENOTED



VERTICAL CONCEALED FAN COIL UNIT WITHIN FURNITURE



BULKHEAD FAN COIL



SLIMLINE CEILING CONCEALED FAN COIL UNIT

## Pipe Sizing Legend

Index	Connecting Pipes (mm)(inch)
1	6.35 (1/4)
2	9.52 (3/8)
3	12.7 (1/2)
4	15.88 (5/8)
5	19.05 (3/4)
6	22.2 (7/8)
7	25.4 (1)
8	28.58 (1 1/8)
9	31.8 (1 1/4)
10	34.9 (1 1/2)
11	38.1 (1 3/8)
12	41.3 (1 5/8)
13	44.5 (1 3/4)
14	50.8 (2)
15	53.98 (2 1/8)

## CDM Pre-Construction Information

The following information is provided in accordance with Regulation 9 of the CDM Regulations 2015:

NO SIGNIFICANT RISK ARE IDENTIFIED WITH REGARDS TO THESE WORKS

## Project Title

42 BEDFORD SQUARE  
LONDON

## Drawing Title

FIRST FLOOR  
VRF COMFORT COOLING SERVICES  
LAYOUT

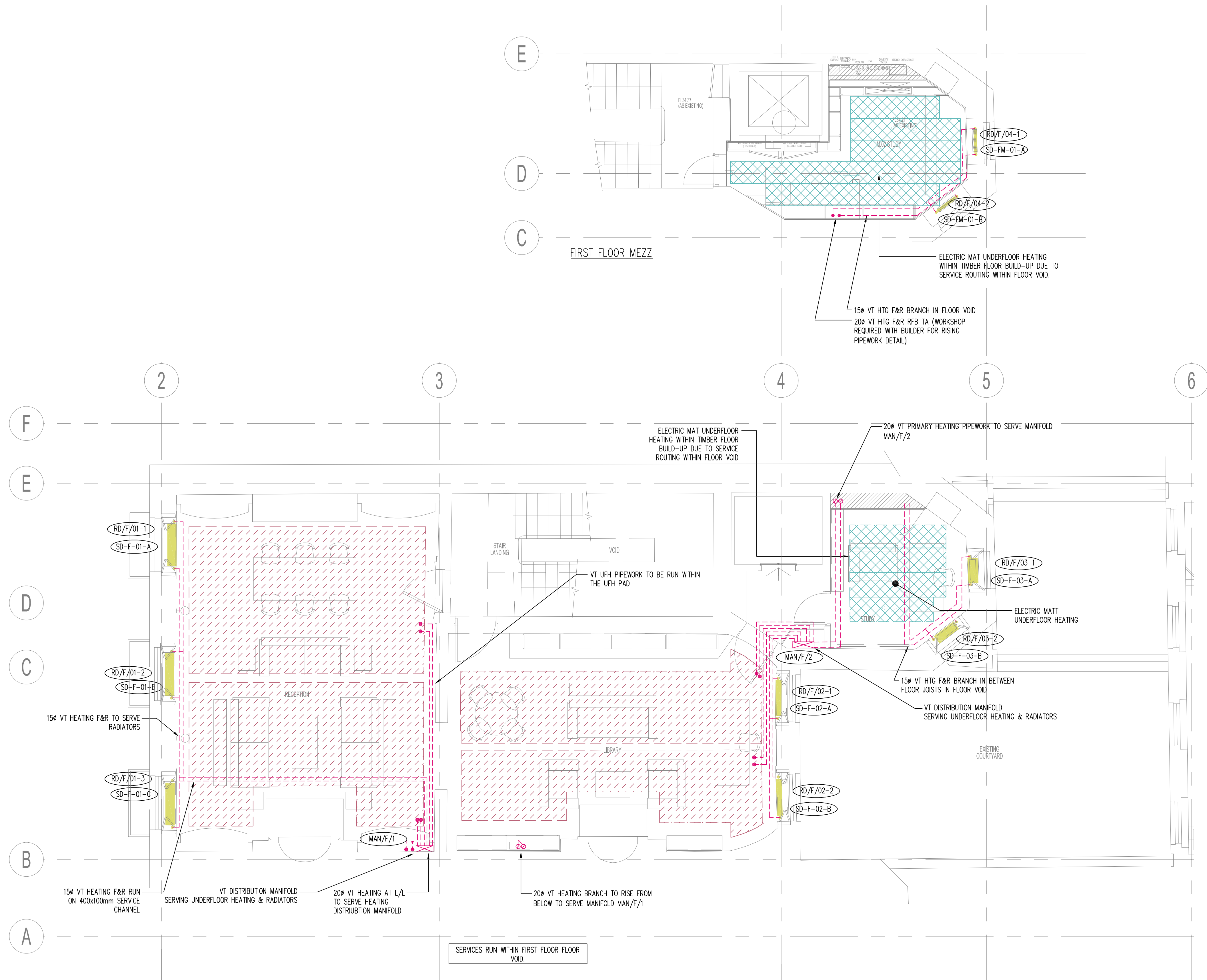
www.hoarelea.com



## PLANNING - FOR APPROVAL

Drawn by	Designed by	Reviewed by
GC	IDO	NH
Project No	Date	Scale @ A1
0209233	22/11/2017	1:50 @ A1
DRAWING NUMBER		Revision
HL-BBS-BSQ-ME-100-113		11

11	XREF UPDATED	IDO	NH	12/17
10	AMENDED TO BDP COMMENTS	IDO	NH	12/17
09	DETAIL A AMENDED & MEWS OMITTED	IDO	NH	11/17
08	ARCHITECT XREF UPDATED	GC	IDO	11/17
Index	Description	Drawn & Ck'd by	Rev'd by	Date
Revisions				
CAD ORIGINAL - NOT TO BE MODIFIED BY HAND				



## General Notes:

- The drawing does not necessarily show all the information needed to interpret the design intent or the construction details.
- The drawing contains information from more than one source and must be read in conjunction with all relevant specifications.
- Any apparent drafting errors and differences between other drawings and specifications shall be brought to our attention.

## Project Notes:

- THIS DRAWING TO BE READ IN CONJUNCTION WITH ALL OTHER RELEVANT DRAWINGS AND SPECIFICATIONS.
- DO NOT SCALE FROM THIS DRAWING.

## LEGEND

	HEATING MANIFOLD AND REFERENCE
	RADIATOR AND REFERENCE
	PIPEWORK WITHIN FLOOR VOID
	PIPEWORK WITHIN CEILING VOID
	PIPEWORK AT LOW LEVEL
	WET UHF
	ELECTRIC UHF

## CDM Pre-Construction Information

The following information is provided in accordance with Regulation 9 of the CDM Regulations 2015:

NO SIGNIFICANT RISK ARE IDENTIFIED WITH REGARDS TO THESE WORKS

## Project Title

42 BEDFORD SQUARE  
LONDON

## Drawing Title

FIRST FLOOR  
LTHW SPACE HEATING SERVICES  
LAYOUT

[www.hoarelea.com](http://www.hoarelea.com)



## PLANNING - FOR APPROVAL

Drawn by	Designed by	Reviewed by
GC	IDO	NH
Project No	Date	Scale @ A1
0209233	22/11/2017	1:50 @ A1
DRAWING NUMBER		Revision
HL-BBS-BSQ-ME-100-123		11

Index	Description	Drawn & Cdn by	Rev'd by	Date
11	XREF UPDATED	IDO	NH	12/17
10	AMENDED TO DBP COMMENT	IDO	NH	12/17
09	UHF MANIFOLD MAN/F/2 RELOCATED & MEWS OMITTED	IDO	NH	11/17
08	ARCHITECT XREF UPDATED	GC	IDO	11/17

## Revisions

CAD ORIGINAL - NOT TO BE MODIFIED BY HAND



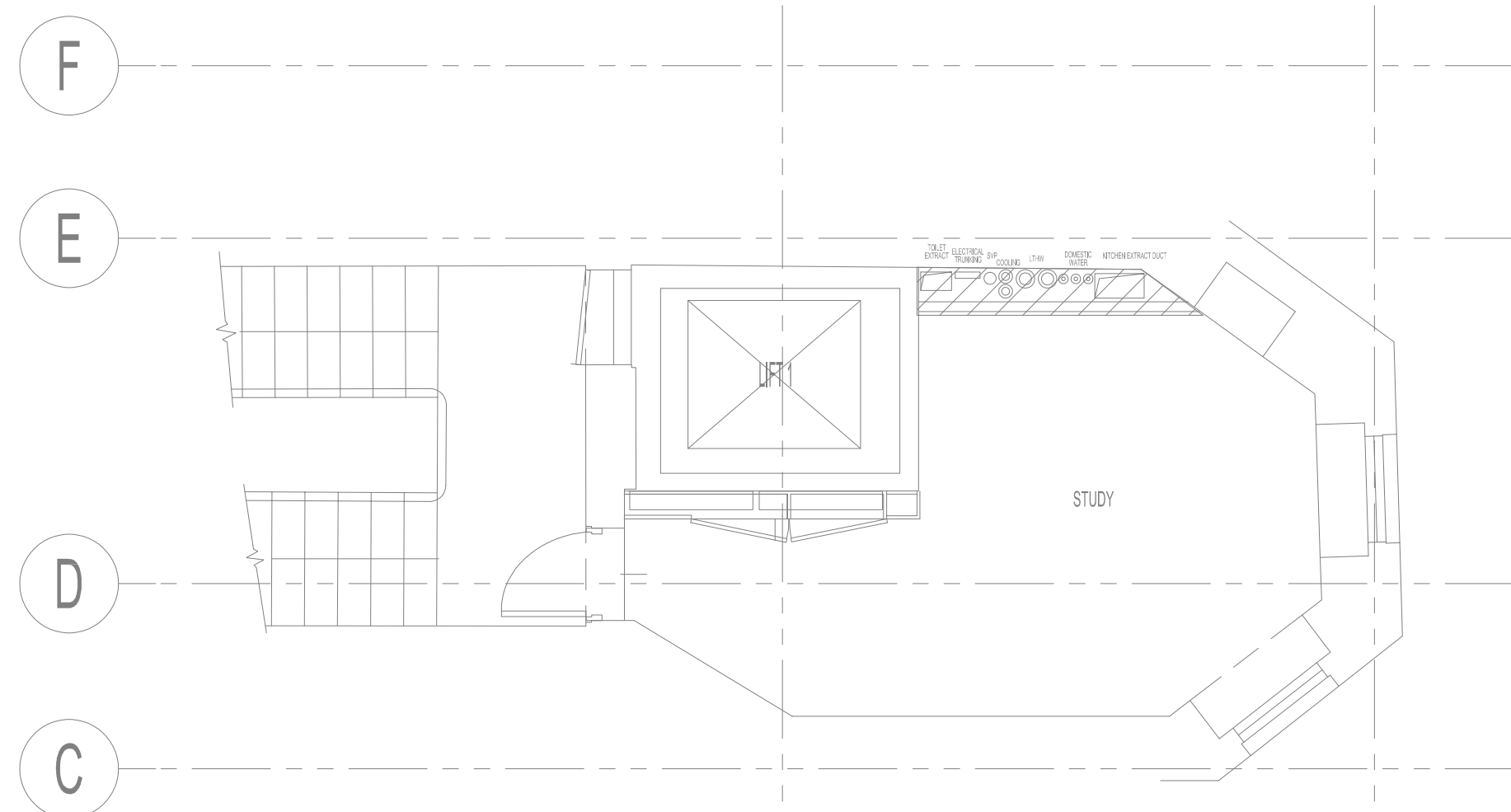
PBCW  
SBCW  
HWS  
MWS  
CAT-5  
BD  
DW  
HS  
SH  
SK  
WC  
WHB  
WM

POTABLE BOOSTED COLD WATER SERVICE  
SOFTENED BOOSTED COLD WATER SERVICE  
HOT WATER SERVICE  
MAINS WATER SERVICE  
CATEGORY 5 WATER SERVICE (CAT-5)  
BIDET  
DISWASHER  
HAND SPRAY  
SHOWER  
SINK  
WATER CLOSET  
WASH HAND BASIN  
WASHING MACHINE

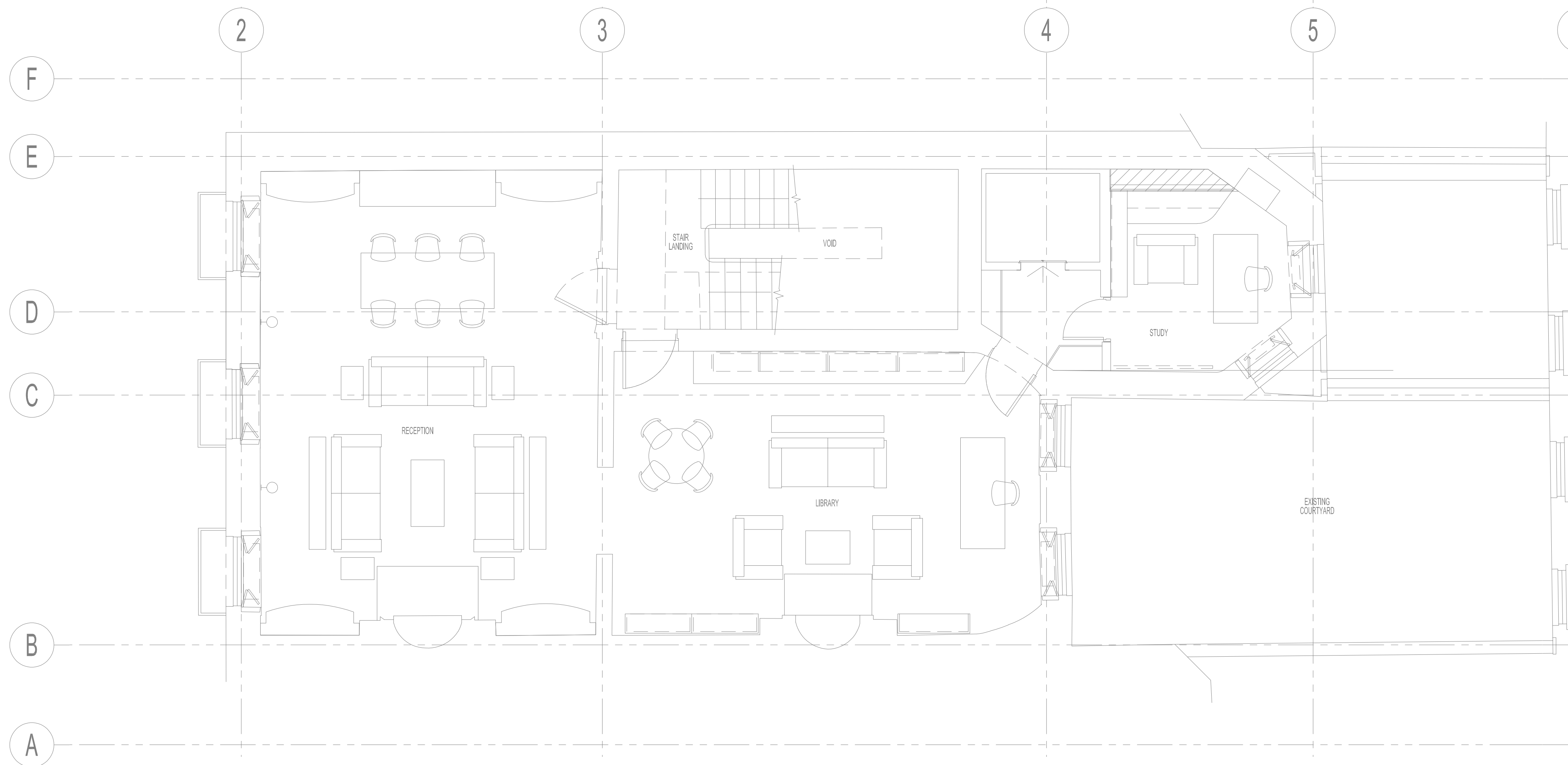
HL  
LL  
D FA  
R FB  
R TA  
D TB  
RTHL  
DFHL  
RFLL  
DTLL  
Ø

HIGH LEVEL  
LOW LEVEL  
DROP FROM ABOVE  
RISE FROM BELOW  
RISE TO ABOVE  
DROP TO BELOW  
RISE TO ABOVE  
DROP FROM HIGH LEVEL  
RISE FROM LOW LEVEL  
DROP TO LOW LEVEL  
DIAMETER

----- POTABLE BOOSTED COLD WATER (PBCW)  
----- SOFTENED BOOSTED COLD WATER (SBCW)  
----- HOT WATER SERVICE (HWS)  
----- CATEGORY 5 WATER SERVICE (CAT-5)



FIRST FLOOR MEZZANINE



## General Notes:

- The drawing does not necessarily show all the information needed to interpret the design intent or the construction details.
- The drawing contains information from more than one source and must be read in conjunction with all relevant specifications.
- Any apparent drafting errors and differences between other drawings and specifications shall be brought to our attention.

## Project Notes:

- THIS DRAWING TO BE READ IN CONJUNCTION WITH ALL OTHER RELEVANT DRAWINGS AND SPECIFICATIONS.
- DO NOT SCALE FROM THIS DRAWING.

## CDM Pre-Construction Information

The following information is provided in accordance with Regulation 9 of the CDM Regulations 2015:  
NO SIGNIFICANT RISK ARE IDENTIFIED WITH REGARDS TO THESE WORKS

## Project Title

42 BEDFORD SQUARE  
LONDON

## Drawing Title

FIRST FLOOR  
DOMESTIC WATER SERVICES LAYOUT

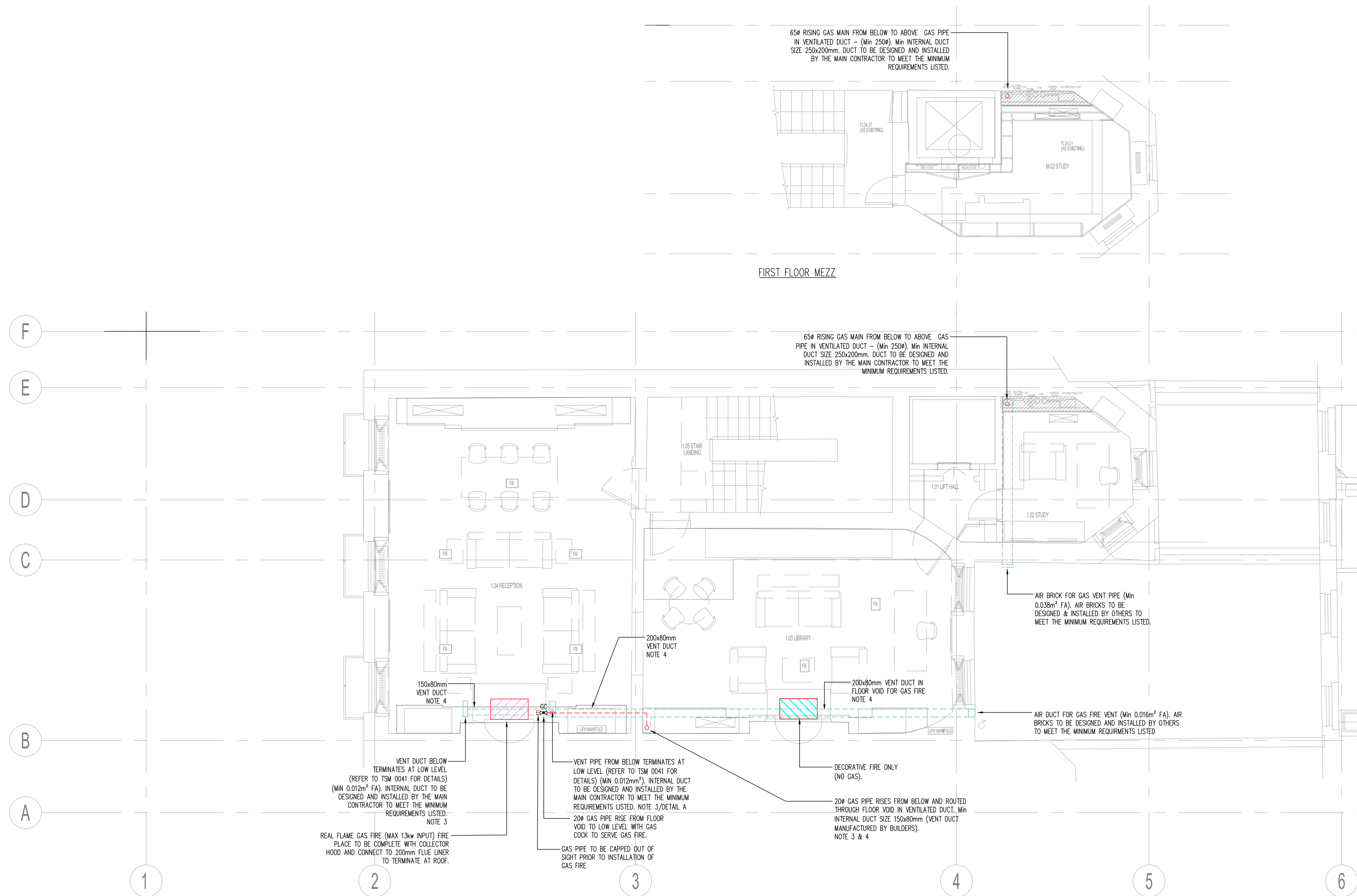
www.hoarelea.com



PLANNING - FOR APPROVAL

Drawn by	Designed by	Reviewed by
GC	IDO	NH
Project No	Date	Scale @ A1
0209233	22/11/2017	1:50@ A1
DRAWING NUMBER		Revision
HL-BBS-BSQ-ME-100-133		09

Index	Description	Drawn & Cln by	Rev'd by	Date
09	XREF UPDATED	IDO	NH	12/17
08	AMENDED TO BDP COMMENTS	IDO	NH	12/17
07	PIPEWORK AMENDED, CAT 5 SUPPLY REMOVED, AND MEWS OMITTED	GC	IDO	11/17
06	ARCHITECT XREF UPDATED	GC	IDO	11/17
Revisions				
CAD ORIGINAL - NOT TO BE MODIFIED BY HAND				



## General Notes:

- The drawing does not necessarily show all the information needed to interpret the design intent or the construction details.
- The drawing contains information from more than one source and must be read in conjunction with all relevant specifications.
- Any apparent drafting errors and differences between other drawings and specifications shall be brought to our attention.

## Project Notes:

- THIS DRAWING TO BE READ IN CONJUNCTION WITH ALL OTHER RELEVANT DRAWINGS AND SPECIFICATIONS.
- DO NOT SCALE FROM THIS DRAWING.
- TO BE INSTALLED IN ACCORDANCE WITH TECHNICAL SUBMITTAL:-  
TSM 041 VENT FLOOR GRILLES
- CONSTRUCTION OF VENT DUCT BY OTHERS. ALL DIMENSIONS ARE TO BE FORMED TO CLEAR INTERNAL CONSTRUCTION
- FINAL CONNECTION & FINISHING DETAIL TO BE CO-ORDINATED/FINALISED WITH THE MAIN CONTRACTOR.

## LEGEND:

- BURIED PIPE WORK WITHIN NEW FLOOR
- LOW LEVEL PIPEWORK
- HIGH LEVEL PIPEWORK
- GAS PIPEWORK
- VENT PIPEWORK/DUCTWORK
- GAS MAIN WITHIN VENTILATED SLEEVE DUCT
- GAS APPLIANCE
- NONE GAS APPLIANCE

## CDM Pre-Construction Information

The following information is provided in accordance with Regulation 9 of the CDM Regulations 2015:

NO SIGNIFICANT RISK ARE IDENTIFIED WITH REGARDS TO THESE WORKS

## Project Title

42 BEDFORD SQUARE  
LONDON

## Drawing Title

FIRST FLOOR  
GAS SERVICES LAYOUT

www.hoarelea.com



## PLANNING - FOR APPROVAL

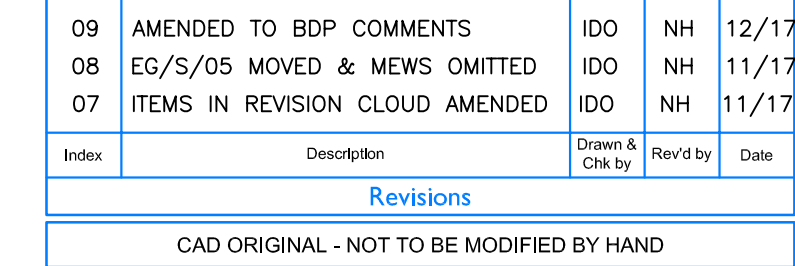
Drawn by	Designed by	Reviewed by
GC	IDO	NH
Project No	Date	Scale @ A1
0209233	22/11/2017	1:50 @ A1
DRAWING NUMBER		Revision
HL-BBS-BSQ-ME-100-153		10

Index	Description	Drawn & Ck'd by	Rev'd by	Date
10	AMENDED TO BDP COMMENTS	JW	NH	12/17
09	AMENDED LIVING ROOM GAS OUTLET	IDO	NH	12/17
08	AMENDED TO BDP COMMENT	IDO	NH	12/17
07	ARCHITECT XREF UPDATED	GC	IDO	11/17

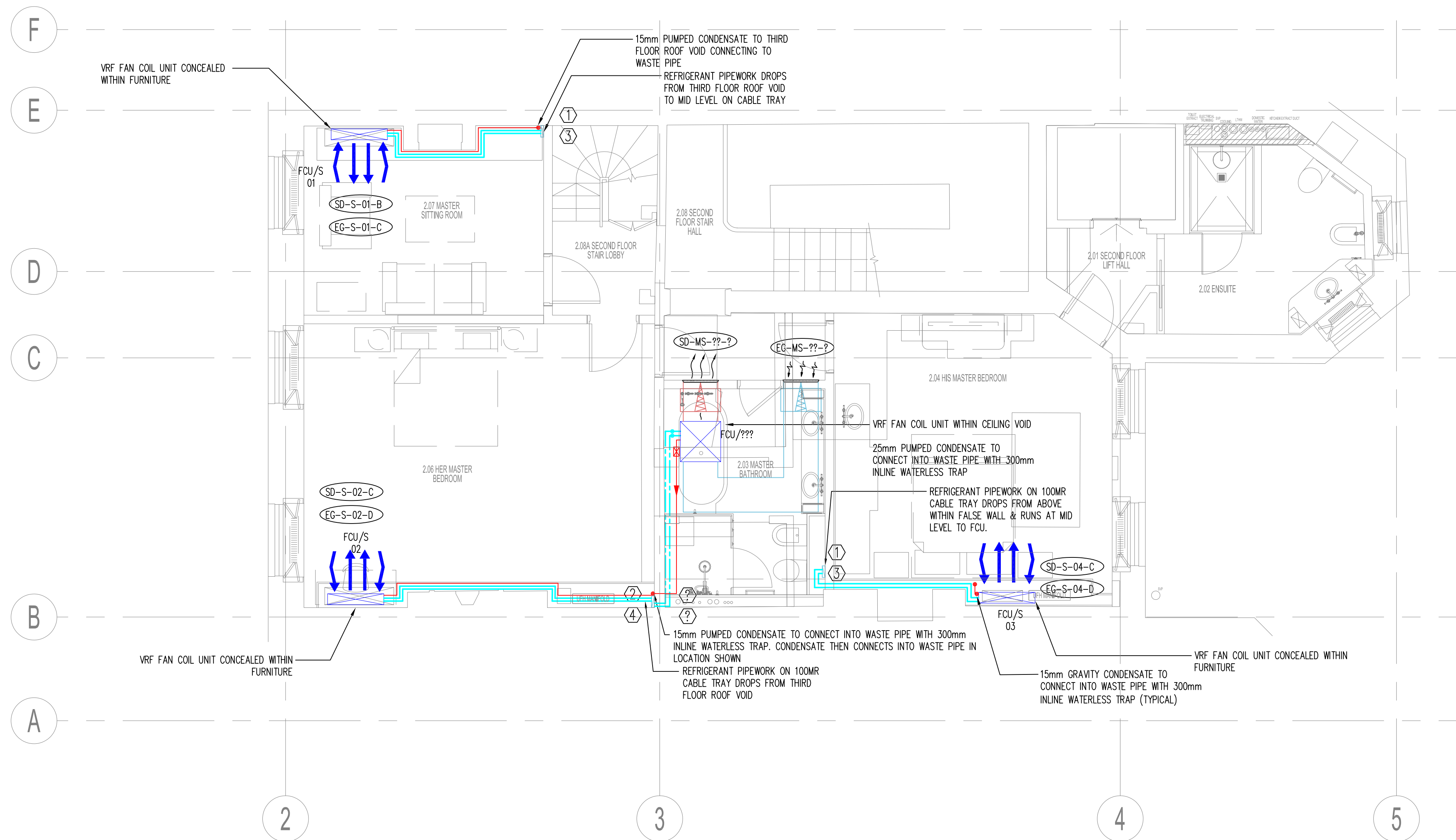
Revisions

CAD ORIGINAL - NOT TO BE MODIFIED BY HAND





Drawn by	Designed by	Reviewed by
IDO	IDO	NH
Project No	Date	Scale @ A1
0209223	09/11/2017	1:50@ A1
DRAWING NUMBER		Revision
HL-BBS-BSQ-ME-200-104		09



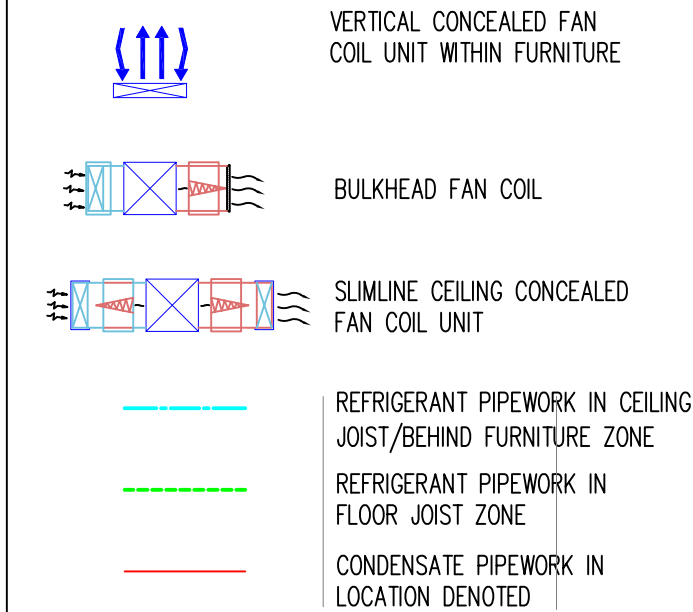
## General Notes:

- The drawing does not necessarily show all the information needed to interpret the design intent or the construction details.
- The drawing contains information from more than one source and must be read in conjunction with all relevant specifications.
- Any apparent drafting errors and differences between other drawings and specifications shall be brought to our attention.

## Project Notes:

- THIS DRAWING TO BE READ IN CONJUNCTION WITH ALL OTHER RELEVANT DRAWINGS AND SPECIFICATIONS.
- DO NOT SCALE FROM THIS DRAWING.

## LEGEND



## Pipe Sizing Legend

Index	Connecting Pipes (mm(inch))
1	6.35 (1/4)
2	9.52 (3/8)
3	12.7 (1/2)
4	15.88 (5/8)
5	19.05 (3/4)
6	22.2 (7/8)
7	25.4 (1)
8	28.58 (1 1/8)
9	31.8 (1 1/4)
10	34.9 (1 1/2)
11	38.1 (1 3/8)
12	41.3 (1 5/8)
13	44.5 (1 3/4)
14	50.8 (2)
15	53.98 (2 1/8)

## CDM Pre-Construction Information

The following information is provided in accordance with Regulation 9 of the CDM Regulations 2015:

**NO SIGNIFICANT RISK ARE IDENTIFIED WITH REGARDS TO THESE WORKS**

## Project Title

42 BEDFORD SQUARE  
LONDON

## Drawing Title

SECOND FLOOR  
VRF COMFORT COOLING SERVICES LAYOUT

www.hoarelea.com



## PLANNING - FOR APPROVAL

Drawn by	Designed by	Reviewed by
IDO	IDO	NH
Project No	Date	Scale @ A1
0209223	09/11/2017	1:50 @ A1
DRAWING NUMBER		Revision
HL-BBS-BSQ-ME-200-114		10

Index	Description	Drawn & Cdn by	Rev'd by	Date
10	AMENDED TO DBP COMMENTS	JW	NH	12/17
09	AMENDED TO DBP COMMENTS	IDO	NH	12/17
08	DETAILS UPDATED, FCU/S/1&2 MOVED, & MEWS OMITTED	IDO	NH	11/17
07	ITEMS IN REVISION CLOUD AMENDED	IDO	NH	11/17
Revisions				
CAD ORIGINAL - NOT TO BE MODIFIED BY HAND				





## General Notes:

- The drawing does not necessarily show all the information needed to interpret the design intent or the construction details.
- The drawing contains information from more than one source and must be read in conjunction with all relevant specifications.
- Any apparent drafting errors and differences between other drawings and specifications shall be brought to our attention.

---

## Project Notes:

1. THIS DRAWING TO BE READ IN CONJUNCTION WITH ALL OTHER RELEVANT DRAWINGS AND SPECIFICATIONS.
2. DO NOT SCALE FROM THIS DRAWING.

**CDM Pre-Construction Information**

The following information is provided in accordance with Regulation 9 of the CDM Regulations 2015:

**NO SIGNIFICANT RISK ARE IDENTIFIED WITH REGARDS TO THESE WORKS**

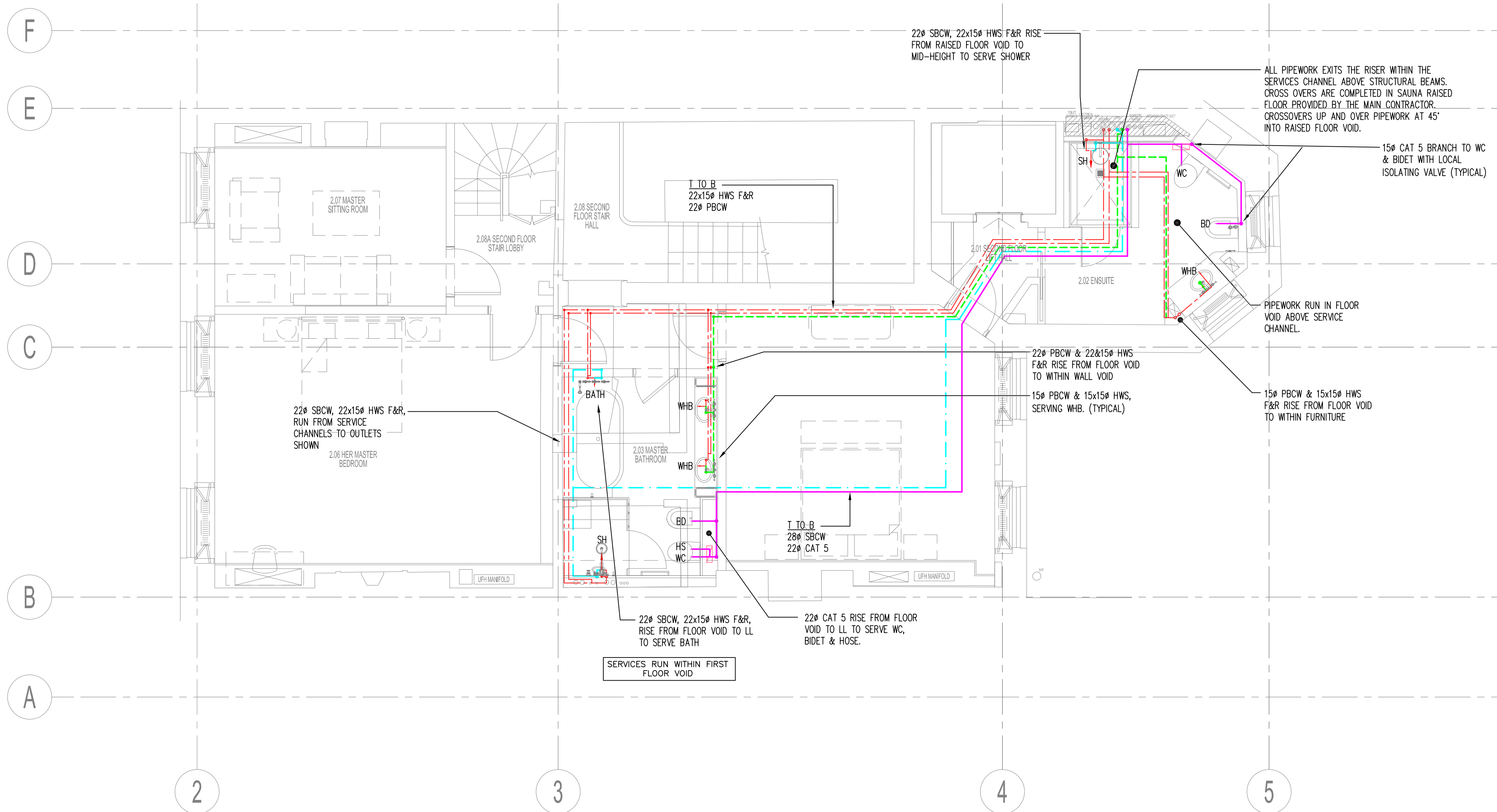
**CDM Pre-Construction Information**

The following information is provided in accordance with Regulation 9 of the CDM Regulations 2015:

**NO SIGNIFICANT RISK ARE IDENTIFIED WITH REGARDS TO THESE WORKS**

	DRAWING NUMBER
	HL-BBS-BSQ-ME-200-124

Drawn by	Designed by	Reviewed by
IDO	IDO	NH
Project No	Date	Scale @ A1
0209223	09/11/2017	1:50@ A1
DRAWING NUMBER		Revision
HL-BBS-BSQ-ME-200-124		12



## General Notes:

- The drawing does not necessarily show all the information needed to interpret the design intent or the construction details.
- The drawing contains information from more than one source and must be read in conjunction with all relevant specifications.
- Any apparent drafting errors and differences between other drawings and specifications shall be brought to our attention.

## Project Notes:

- THIS DRAWING TO BE READ IN CONJUNCTION WITH ALL OTHER RELEVANT DRAWINGS AND SPECIFICATIONS.
- DO NOT SCALE FROM THIS DRAWING.
- ALL PIPE ROUTES IN WALL FABRIC/PROTECTION TO BE CO-ORDINATED & FINALISED VIA WORKSHOPS WITH THE INSTALLATION TEAM & THE MAIN CONTRACTOR.

## LEGEND

PBCW	POTABLE BOOSTED COLD WATER SERVICE	HL	HIGH LEVEL
SBCW	SOFTENED BOOSTED COLD WATER SERVICE	LL	LOW LEVEL
HWS	HOT WATER SERVICE	D FA	DROP FROM ABOVE
MWS	MAINS WATER SERVICE	R FB	RISE FROM BELOW
CAT-5	CATEGORY 5 WATER SERVICE (CAT-5)	R TA	RISE TO ABOVE
BD	BIDET	D TB	DROP TO BELOW
DW	DISWASHER	R THL	RISE TO ABOVE
HS	HAND SPRAY	DFHL	DROP FROM HIGH LEVEL
SH	SHOWER	RFLL	RISE FROM LOW LEVEL
SK	SINK	DTLL	DROP TO LOW LEVEL
WC	WATER CLOSET	Ø	DIAMETER
WHB	WASH HAND BASIN		
WM	WASHING MACHINE		
		---	POTABLE BOOSTED COLD WATER (PBCW)
		---	SOFTENED BOOSTED COLD WATER (SBCW)
		---	HOT WATER SERVICE (HWS)
		---	CATEGORY 5 WATER SERVICE (CAT 5)

## CDM Pre-Construction Information

The following information is provided in accordance with Regulation 9 of the CDM Regulations 2015:

NO SIGNIFICANT RISK ARE IDENTIFIED WITH REGARDS TO THESE WORKS

## Project Title

42 BEDFORD SQUARE  
LONDON

## Drawing Title

SECOND FLOOR  
DOMESTIC WATER SERVICES LAYOUT

www.hoarelea.com

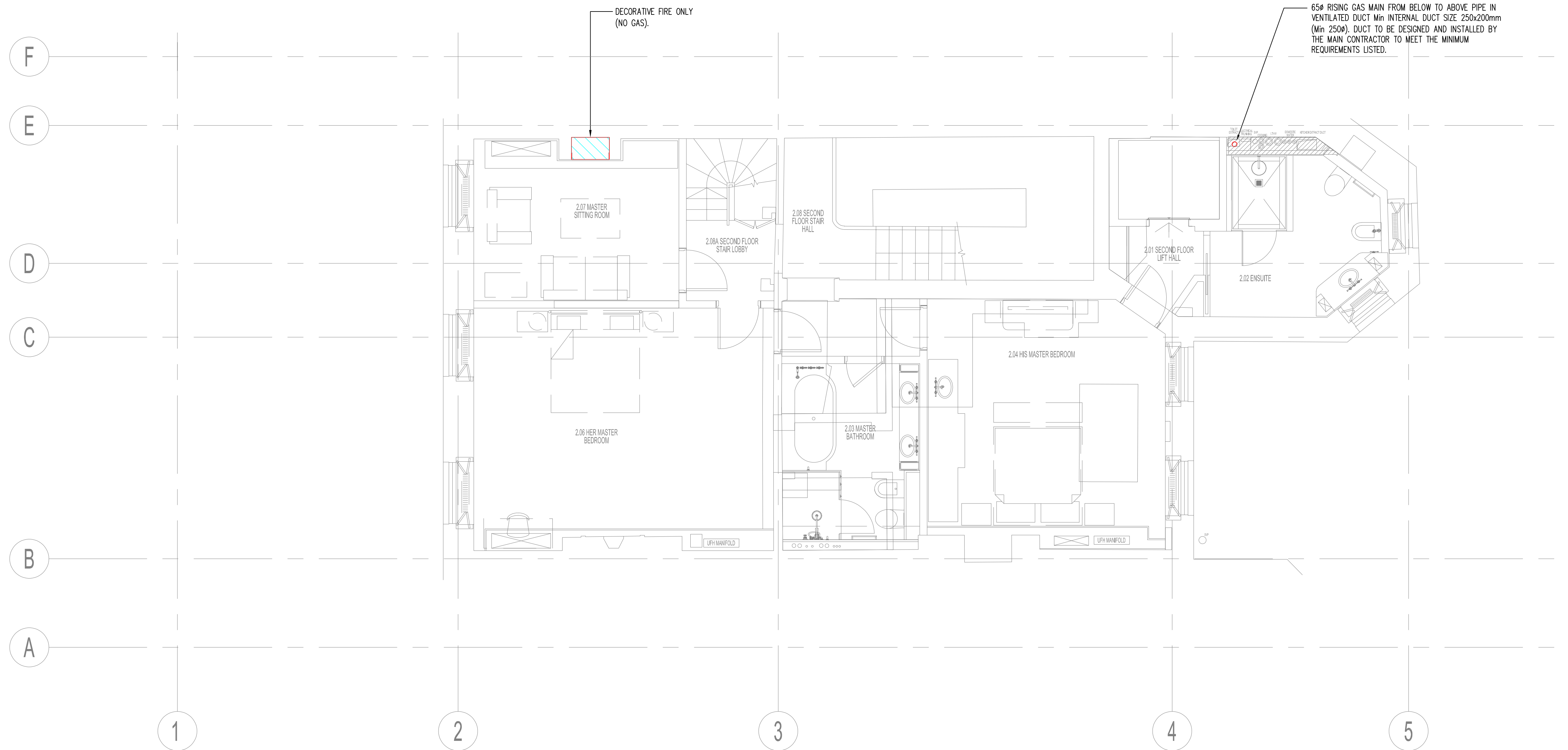


## PLANNING - FOR APPROVAL

Drawn by	Designed by	Reviewed by
IDO	IDO	NH
Project No	Date	Scale @ A1
0209223	09/11/2017	1:50 @ A1
DRAWING NUMBER		Revision
HL-BBS-BSQ-ME-200-134		08

Index	Description	Drawn & Ck'd by	Rev'd by	Date
08	AMENDED TO BDP COMMENTS	IDO	NH	12/17
07	WHB REMOVED, SHOWER MOVER, MEWS OMITTED	IDO	NH	11/17
06	ITEMS IN REVISION CLOUD AMENDED	IDO	NH	11/17
Revisions				
CAD ORIGINAL - NOT TO BE MODIFIED BY HAND				





## General Notes:

- The drawing does not necessarily show all the information needed to interpret the design intent or the construction details.
- The drawing contains information from more than one source and must be read in conjunction with all relevant specifications.
- Any apparent drafting errors and differences between other drawings and specifications shall be brought to our attention.

## Project Notes:

- THIS DRAWING TO BE READ IN CONJUNCTION WITH ALL OTHER RELEVANT DRAWINGS AND SPECIFICATIONS.
- DO NOT SCALE FROM THIS DRAWING.
- CONSTRUCTION OF VENT DUCT BY OTHERS. ALL DIMENSIONS ARE TO BE FORMED TO CLEAR INTERNAL CONSTRUCTION

## LEGEND:

- BURIED PIPE WORK WITHIN NEW FLOOR
- LOW LEVEL PIPEWORK
- HIGH LEVEL PIPEWORK
- GAS PIPEWORK
- VENT PIPEWORK/DUCTWORK
- GAS MAIN WITHIN VENTILATED SLEEVE DUCT
- GAS APPLIANCE
- NONE GAS APPLIANCE

## CDM Pre-Construction Information

The following information is provided in accordance with Regulation 9 of the CDM Regulations 2015:

NO SIGNIFICANT RISK ARE IDENTIFIED WITH REGARDS TO THESE WORKS

## Project Title

42 BEDFORD SQUARE  
LONDON

## Drawing Title

SECOND FLOOR  
GAS SERVICES LAYOUT

www.hoarelea.com



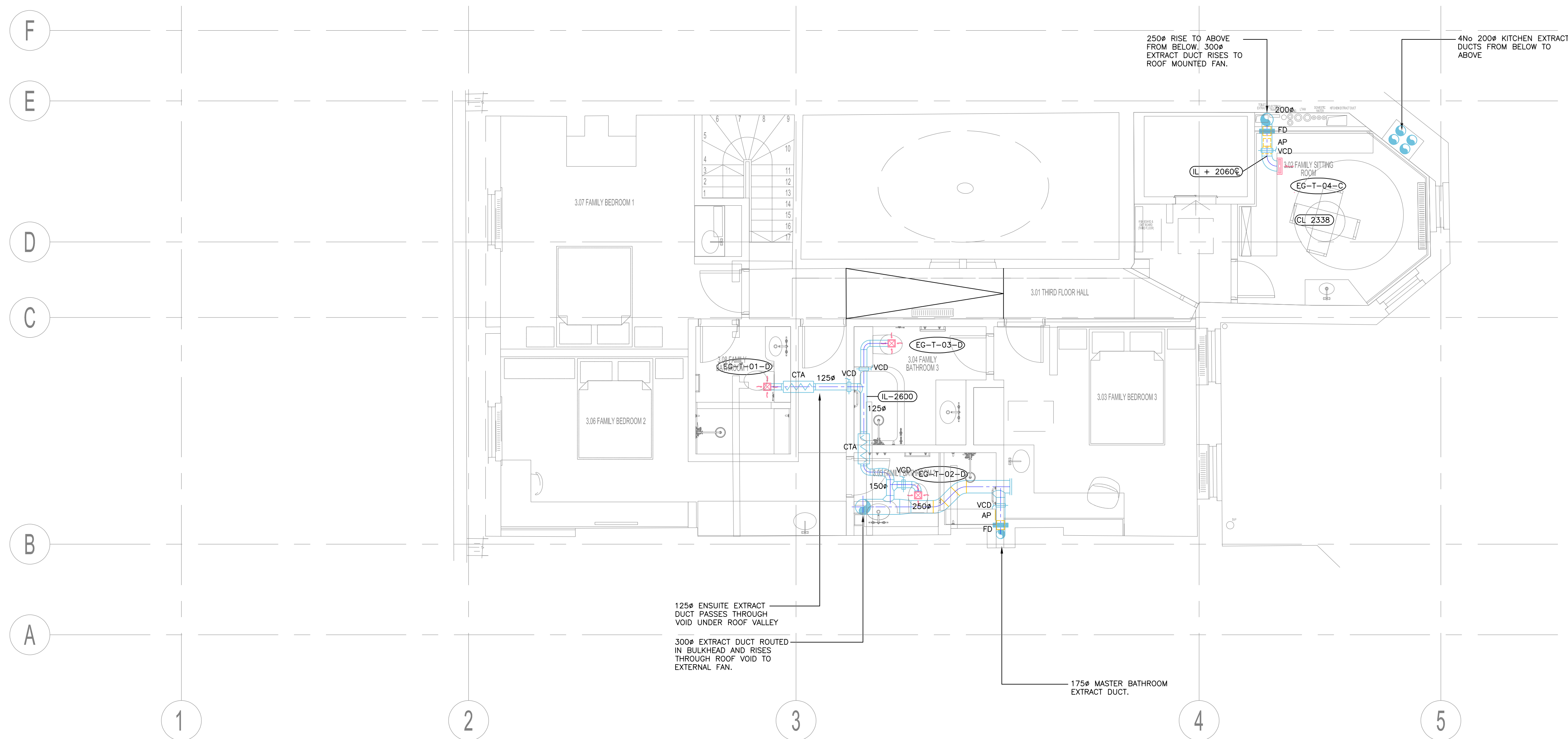
## PLANNING - FOR APPROVAL

Drawn by	Designed by	Reviewed by
IDO	IDO	NH
Project No	Date	Scale @ A1
0209223	09/11/2017	1:50 @ A1
DRAWING NUMBER		Revision
HL-BBS-BSQ-ME-200-154		09

Index	Description	Drawn & Ck'd by	Rev'd by	Date
09	RISER NOTE AMENDED	IDO	NH	12/17
08	AMENDED TO BDP COMMENTS	IDO	NH	12/17
07	TITLE BLOCK AMENDED	IDO	NH	11/17

## Revisions

CAD ORIGINAL - NOT TO BE MODIFIED BY HAND



## General Notes:

- The drawing does not necessarily show all the information needed to interpret the design intent or the construction details.
- The drawing contains information from more than one source and must be read in conjunction with all relevant specifications.
- Any apparent drafting errors and differences between other drawings and specifications shall be brought to our attention.

## Project Notes:

THIS DRAWING TO BE READ IN CONJUNCTION WITH ALL OTHER RELEVANT DRAWINGS AND SPECIFICATIONS.

## CDM Pre-Construction Information

The following information is provided in accordance with Regulation 9 of the CDM Regulations 2015:

NO SIGNIFICANT RISK ARE IDENTIFIED WITH REGARDS TO THESE WORKS

## Project Title

42 BEDFORD SQUARE  
LONDON

## Drawing Title

THIRD FLOOR  
VENTILATION SERVICES LAYOUT

www.hoarelea.com



PLANNING - FOR COMMENT

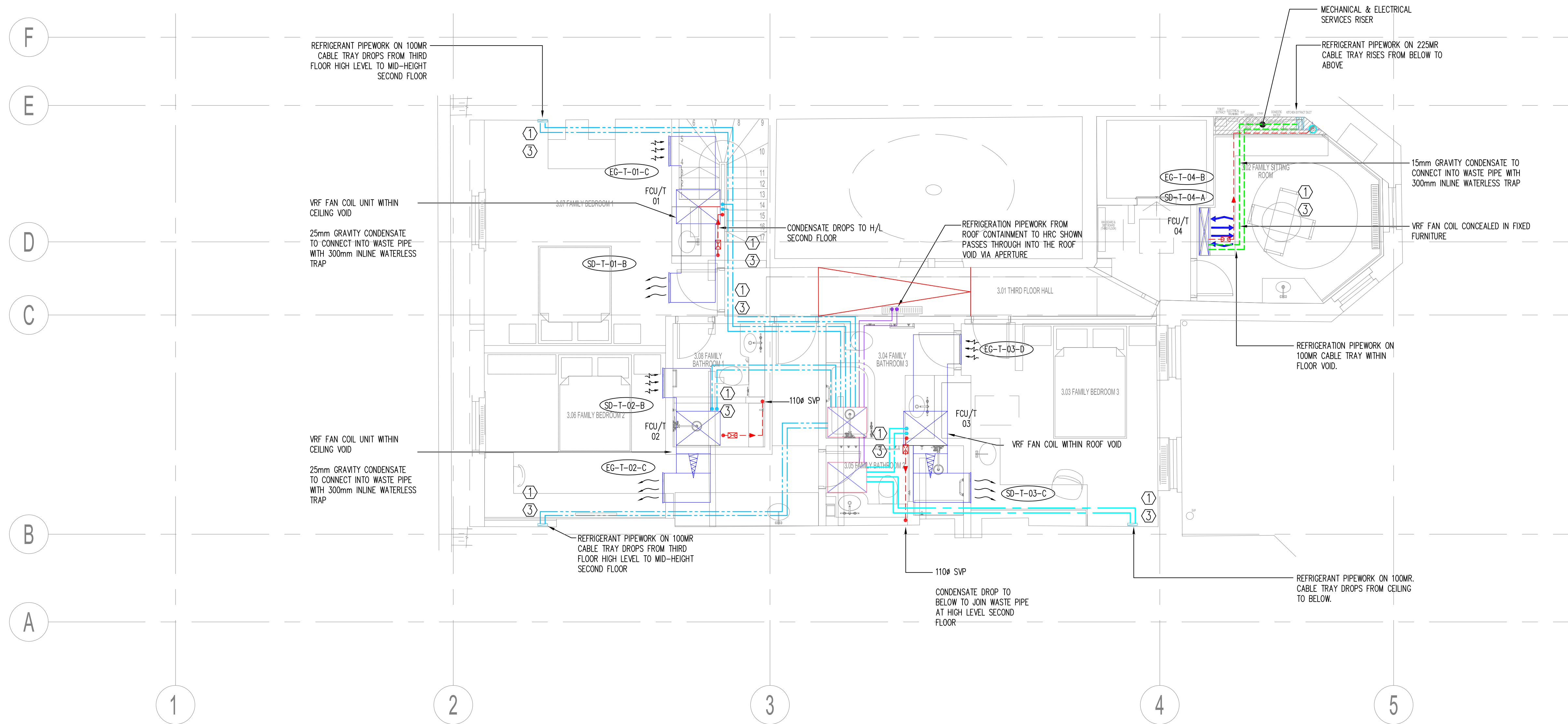
Drawn by	Designed by	Reviewed by
GC	IDO	NH
Project No	Date	Scale @ A1
0209233	22/11/2017	1:50 @ A1
DRAWING NUMBER		Revision
HL-BBS-BSQ-ME-300-105		09

Index	Description	Drawn & Ck'd by	Rev'd by	Date
09	XREF UPDATED	IDO	NH	12/17
08	AMENDED TO BDP COMMENTS	IDO	NH	12/17
07	MEWS OMITTED	IDO	NH	11/17
06	ARCHITECT XREF UPDATED	GC	IDO	11/17

## Revisions

CAD ORIGINAL - NOT TO BE MODIFIED BY HAND



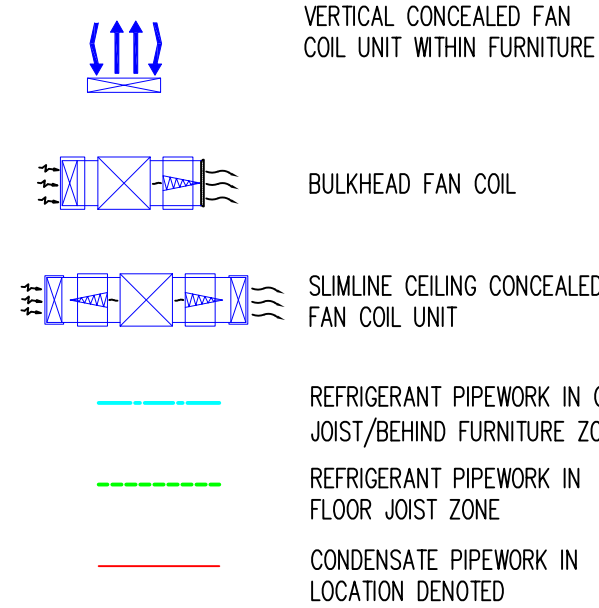


## General Notes:

- The drawing does not necessarily show all the information needed to interpret the design intent or the construction details.
- The drawing contains information from more than one source and must be read in conjunction with all relevant specifications.
- Any apparent drafting errors and differences between other drawings and specifications shall be brought to our attention.

## Project Notes:

- THIS DRAWING TO BE READ IN CONJUNCTION WITH ALL OTHER RELEVANT DRAWINGS AND SPECIFICATIONS.
- DO NOT SCALE FROM THIS DRAWING.



## CDM Pre-Construction Information

The following information is provided in accordance with Regulation 9 of the CDM Regulations 2015:

NO SIGNIFICANT RISK ARE IDENTIFIED WITH REGARDS TO THESE WORKS

## Project Title

42 BEDFORD SQUARE  
LONDON

## Drawing Title

THIRD FLOOR  
VRF COMFORT COOLING SERVICES  
LAYOUT

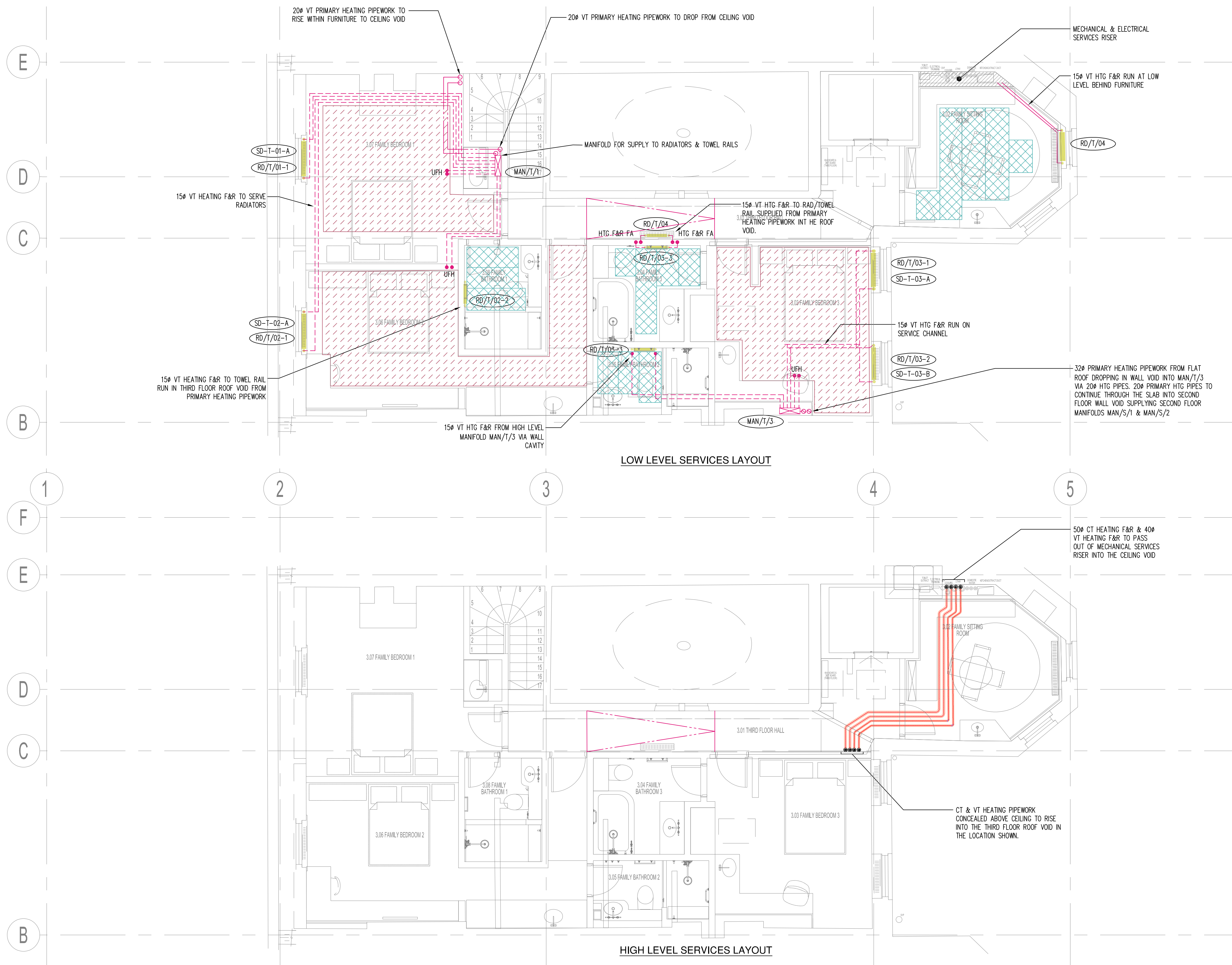
www.hoarelea.com



## PLANNING - FOR APPROVAL

Drawn by	Designed by	Reviewed by
GC	IDO	NH
Project No	Date	Scale @ A1
0209233	22/11/2017	1:50@ A1
DRAWING NUMBER		Revision
HL-BBS-BSQ-ME-300-115		13

Index	Description	Drawn & Ck'd by	Rev'd by	Date
13	AMENDED TO BDP COMMENT	JW	NH	12/17
12	XREF UPDATED	IDO	NH	12/17
11	AMENDED TO BDP COMMENT	IDO	NH	12/17
10	FCU/T/01&3 DUCT AMENDED, DETAIL A CHANGE & MEWS OMITTED	IDO	NH	11/17
09	ARCHITECT XREF UPDATED	GC	IDO	11/17
Revisions				
CAD ORIGINAL - NOT TO BE MODIFIED BY HAND				



## General Notes:

- The drawing does not necessarily show all the information needed to interpret the design intent or the construction details.
- The drawing contains information from more than one source and must be read in conjunction with all relevant specifications.
- Any apparent drafting errors and differences between other drawings and specifications shall be brought to our attention.

## Project Notes:

- THIS DRAWING TO BE READ IN CONJUNCTION WITH ALL OTHER RELEVANT DRAWINGS AND SPECIFICATIONS.
- DO NOT SCALE FROM THIS DRAWING.

HEATING MANIFOLD

AND REFERENCE

MAN/LG/T

RADIATOR AND REFERENCE

RD/LG/01

PIPEWORK WITHIN FLOOR VOID

PIPEWORK WITHIN CEILING VOID

PIPEWORK AT LOW LEVEL

WET UFH

ELECTRIC UFH

## CDM Pre-Construction Information

The following information is provided in accordance with Regulation 9 of the CDM Regulations 2015:

NO SIGNIFICANT RISK ARE IDENTIFIED WITH REGARDS TO THESE WORKS

## Project Title

42 BEDFORD SQUARE  
LONDON

## Drawing Title

THIRD FLOOR  
LTHW SPACE HEATING SERVICES  
LAYOUT

[www.hoarelea.com](http://www.hoarelea.com)


## PLANNING - FOR APPROVAL

Drawn by	Designed by	Reviewed by
GC	IDO	NH
Project No	Date	Scale @ A1
0209233	22/11/2017	1:50 @ A1
DRAWING NUMBER		Revision
HL-BBS-BSQ-ME-300-125		11

Index	Description	Drawn & Ck'd by	Rev'd by	Date
11	XREF AND UFH LAYOUT UPDATED	IDO	NH	12/17
10	AMENDED TO BDP COMMENTS	IDO	NH	12/17
09	UFH MANIFOLD M/T/1 MOVED & MEWS OMITTED	IDO	NH	11/17
08	ARCHITECT XREF UPDATED	GC	IDO	11/17

## Revisions

CAD ORIGINAL - NOT TO BE MODIFIED BY HAND