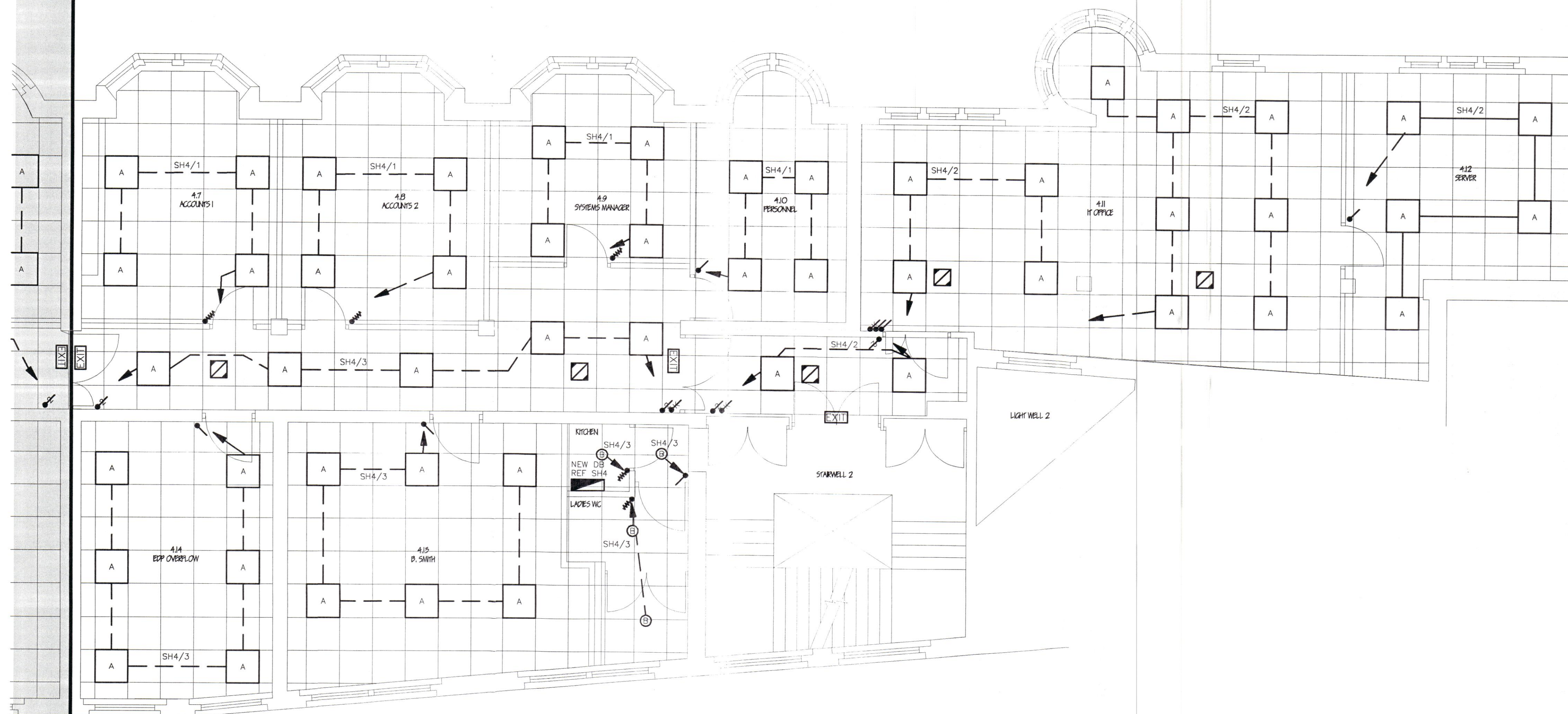


SERVICES SHOWN IN SHADED  
AREA FOR INFORMATION ONLY.  
REFER TO DRG 4238/05



# LEGEND

- A INDICATES 600x600mm MODULAR FLUORESCENT LUMINAIRE. RECESSED TYPE WITH 4 No. 18W PLUSLUX LINEAR FLUORESCENT LAMPS, HIGH POWER FACTOR SWITCHSTART CONTROL GEAR AND LG3 CAT 2 LOUVRE. WHITECROFT BROADSPREAD COMPLIANCE. REF: 600/BRCF/T25/W2.200/S/4218/SB/FTB OR: THORLUX ALTERLUX REF: ALT 8138-S OR: MARLOW INTEGRATED DESIGNS. MIR60. REF: MIR60-418 MRL2
- ⊙ INDICATES 450mm DIAMETER CIRCULAR SEMI RECESSED LUMINAIRE WITH OPAL DIFFUSER. WHITE BODY, 38W 2D LAMP, POWER FACTOR SWITCHSTART CONTROL GEAR AND SEMI RECESS KIT. MARLIN OPALINE REF: 2045 T383 + 2045 ORK
- ◻ INDICATES SELF CONTAINED, NON MAINTAINED, 3 HOUR EMERGENCY LUMINAIRE. SURFACE FIXED. MENVIER BRITELITE REF: BLN
- EXIT INDICATES SELF CONTAINED, MAINTAINED, 3 HOUR EMERGENCY EXIT SIGN. SURFACE FIXED. MENVIER BRITELITE REF: BLN + LEXSABL
- ↗ INDICATES ONE WAY FLUSH MOUNTED GRIDSWITCH. MK LOGIC PLUS RANGE.
- ↕ INDICATES TWO WAY FLUSH MOUNTED GRIDSWITCH. MK LOGIC PLUS RANGE.
- ⚡ INDICATES DOUBLE POLE FLUSH MOUNTED EMERGENCY LIGHTING TEST KEYSWITCH. MK LOGIC PLUS RANGE.
- ⚡ INDICATES CEILING MOUNTED PULL CORD SWITCH. MK LOGIC PLUS RANGE.
- ◻ INDICATES MEM MEMSHIELD TYPE A DISTRIBUTION BOARD WITH 100A D.P. MAIN ISOLATOR.

## NOTES

1. THIS DRAWING SHALL BE READING IN CONJUNCTION WITH THE OTHER ELECTRICAL AND MECHANICAL SERVICES DRAWINGS.

P9904331

REV.	DATE	DESCRIPTION	ALT	DO	CHK	APP
------	------	-------------	-----	----	-----	-----

## T. G. ARMSTRONG & PARTNERS CONSULTING ENGINEERS

Durham City Tel: 0191 386 2314  
Stevenage Tel: 01438 314422

Title  
ELECTRICAL ENGINEERING SERVICES  
PROPOSED LIGHTING LAYOUT  
FOURTH FLOOR - SICILIAN HOUSE

Project  
PSA WHOLESALE LTD,  
SICILIAN HOUSE,  
LONDON WC1.

Architect

Client  
BULLEN CONSULTANTS.

Drawing Number	Revision	Scale
4238/06		A1 1:50 A3 1:100 A4 N.T.S.

Path  
G:\GJC\4238\CURRENT\4TH-LTG.DWG

Traced	DO Check	Originator	Approved
PS	GAC	GAC	GAC

Date  
JANUARY '99

This drawing is the copyright of  
T. G. ARMSTRONG & PARTNERS  
and must not be reproduced without their permission

LONDON BOROUGH OF SUTTON  
28 JAN 1999  
PLANS APPROVED  
ON BEHALF OF THE COUNCIL