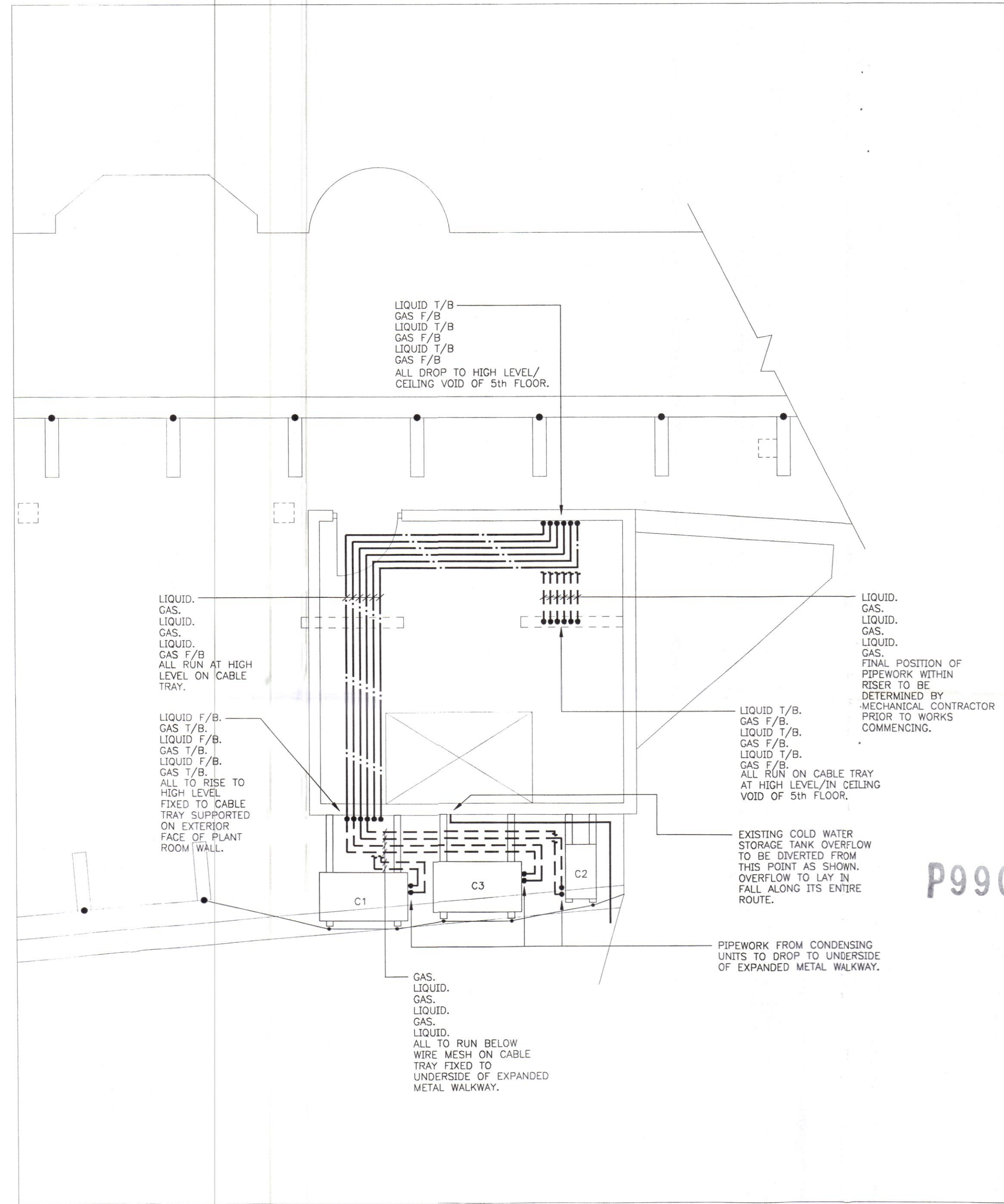


ROOF LEVEL ABOVE
VERNON HOUSE



ROOF LEVEL ABOVE
SICILIAN HOUSE

- NOTES:-
1. ALL ASSOCIATED BUILDERS WORK TO BE CARRIED OUT BY MAIN CONTRACTOR INCLUDING MAKING GOOD TO CEILING ONCE FAN COIL UNITS ARE IN PLACE.
 2. FOR DETAILS OF CONTROL WIRING, SEE DRG 4237/5. ALL EQUIPMENT TO BE WIRED IN ACCORDANCE WITH MANUFACTURERS INSTRUCTIONS.
 3. FOR DETAILS OF SUPPORTING STEELWORK FOR CONDENSING UNITS AND MODIFICATIONS TO EXISTING SAFETY RAILS, SEE STRUCTURAL CONSULTANTS DRAWING No.98Y303, FIGURE 1.
 4. MECHANICAL CONTRACTOR TO VERIFY ROUTES OF PIPEWORK WITHIN EACH PLANTROOM PRIOR TO WORK COMMENCING ON SITE.
 5. REFERENCES C1 TO C5 INCLUSIVE REFER TO CONDENSING UNITS. FOR DETAILS REFER TO MECHANICAL SPECIFICATION.

LEGEND:-

PIPEWORK RUN AT LOW LEVEL.

PIPEWORK RUN BELOW LEVEL OR IN CEILING VOID OF FLOOR BELOW.

PIPEWORK RUN AT HIGH LEVEL.

REV.	DATE	DESCRIPTION	ALT	DO	CHK	CHK	APP

T. G. ARMSTRONG & PARTNERS
CONSULTING ENGINEERS

Durham City Tel: 0191 386 2314
Stevenage Tel: 01438 314422

Title
MECHANICAL ENGINEERING SERVICES
PROPOSED CONDENSING UNIT LAYOUT
AND ASSOCIATED PIPEWORK.
ROOF LEVEL.

Project
PSA WHOLESALE LTD,
SICILIAN AVENUE,
LONDON, WC1

Architect

Client
BULLEN CONSULTANTS

Drawing Number	Revision	Scale
4237/4		A1 1:50
		A3 1:100
		A4 N.T.S.

Path
G:\RPD\4237\CURRENT\4237-04

Traced	DO Check	Originator	Approved
	PS	RPD	

Date
JANUARY '99

Status

This drawing is the copyright of
T. G. ARMSTRONG & PARTNERS
and must not be reproduced without their permission

LONDON SELECTION OF CAMDEN
TOWN AND LONDON PLANES
28 MARCH 1999
PLANS APPROVED
ON BEHALF OF THE COUNCIL