

NOTES

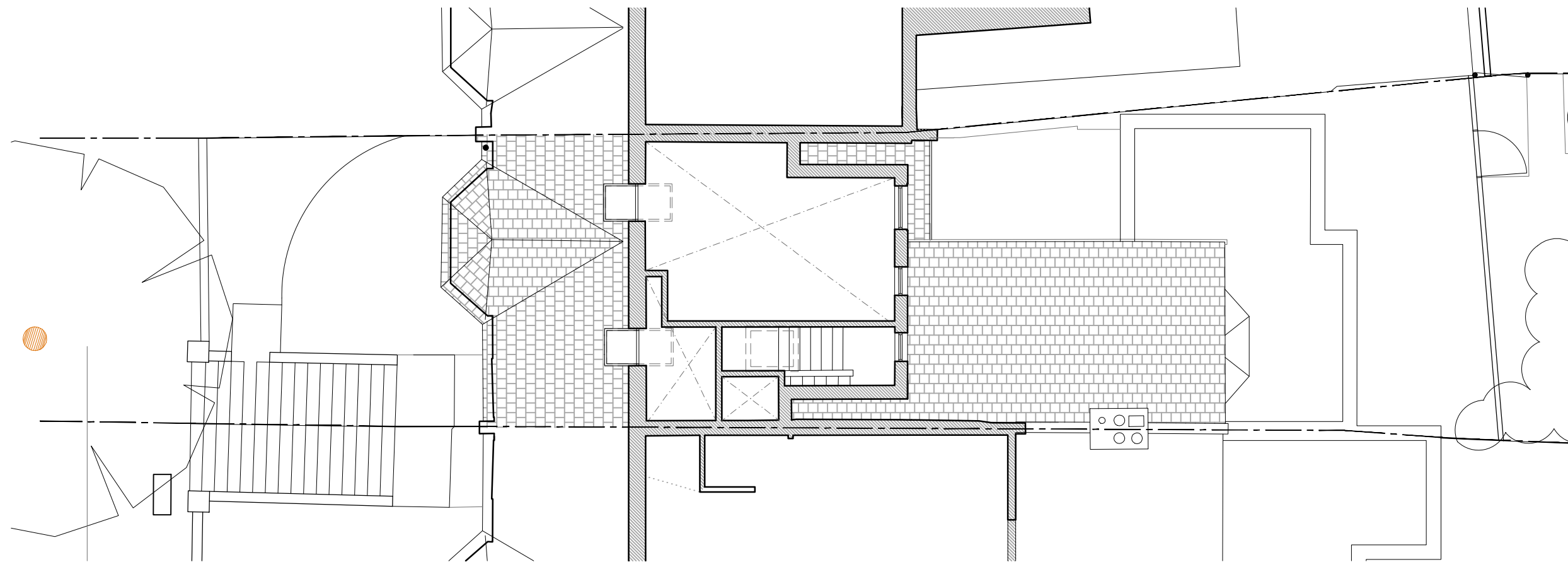
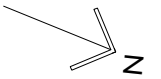
DO NOT SCALE FROM THIS DRAWING

PLANNING

NOTE:

This drawing is submitted as part of a planning, listed building or conservation area consent application and is not intended for any other purpose.

All plans, sections & elevations are based on measured readings and any scaled dimension should not be relied upon to give an accurate measurement.



Proposed Third Floor Plan - 1:100@A3

Revision A	Adaptations to rear dormer	18.09.19
Revision B	Adaptations to dormer	04.10.19
Revision C	Removal of outrigger	17.02.20
Revision D	Adaptations to lightwell	20/03/20
Revision E	Adaptations to lightwell	07/05/20
Revision F	Adaptations to landscape	15/05/20
Revision G	Removal of rear terrace	20.05.20

Martin Evans Architects

18 Charlotte Road
London EC2A 3PB
tel 020 7729 2474

JOB
Hillfield Road
London
NW6

TITLE
Proposed
Third Floor Plan

DATE	21.05.2019
SCALE	1:100 @ A3
DRAWN	G.R.

DRAWING NO. HFR-PL-PRO_05G

