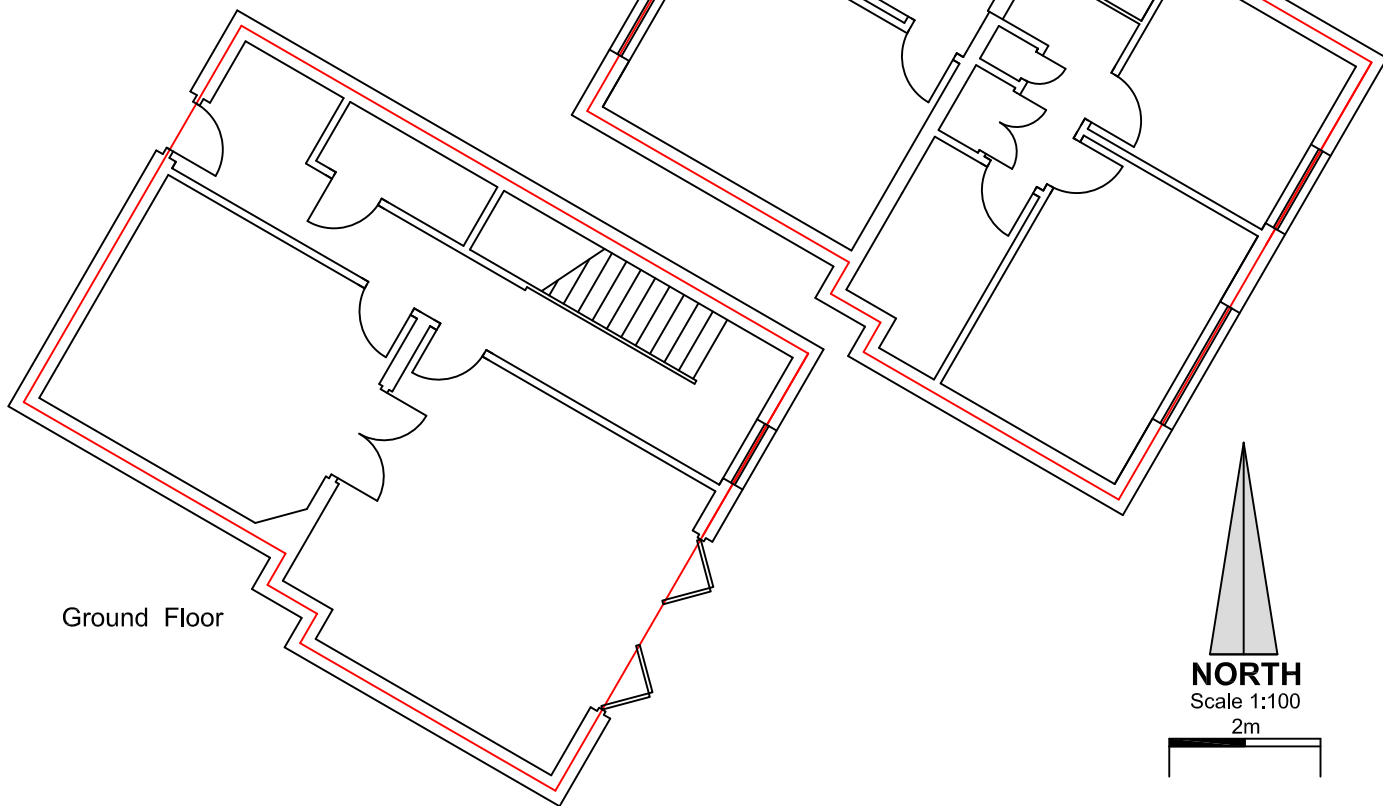


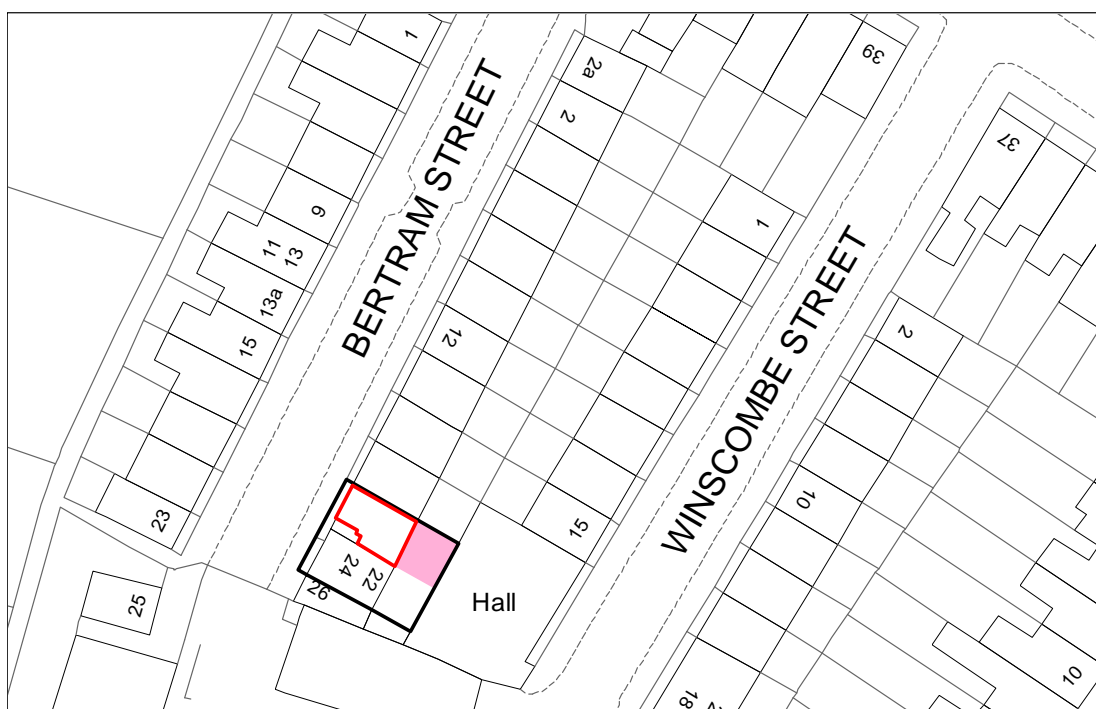
The ordnance survey extract defines the curtilage of 20-22 Bertram Street outlined in heavy black. The extent of the demised flat to be ascertained from the large plan(s). The large plan identifies by red outline at floor level the demised premises. Garden land included in the demise is shown coloured pink on thre Ordnance Survey extract

First Floor



Ground Floor

NORTH
Scale 1:100
2m



20 Bertram Street N19



London Borough of Camden.
Old Town Hall Judd Street WC1H 9JE