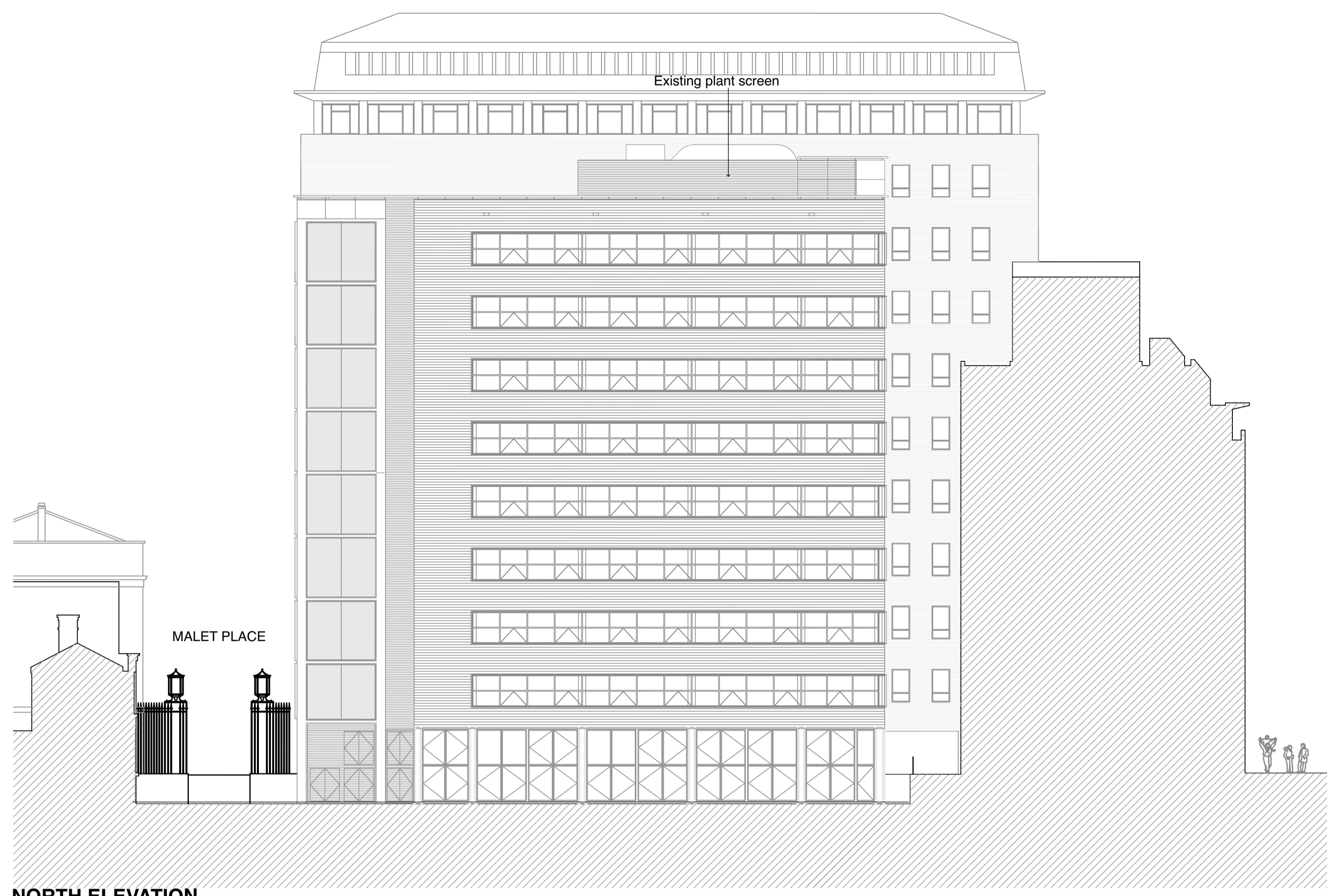
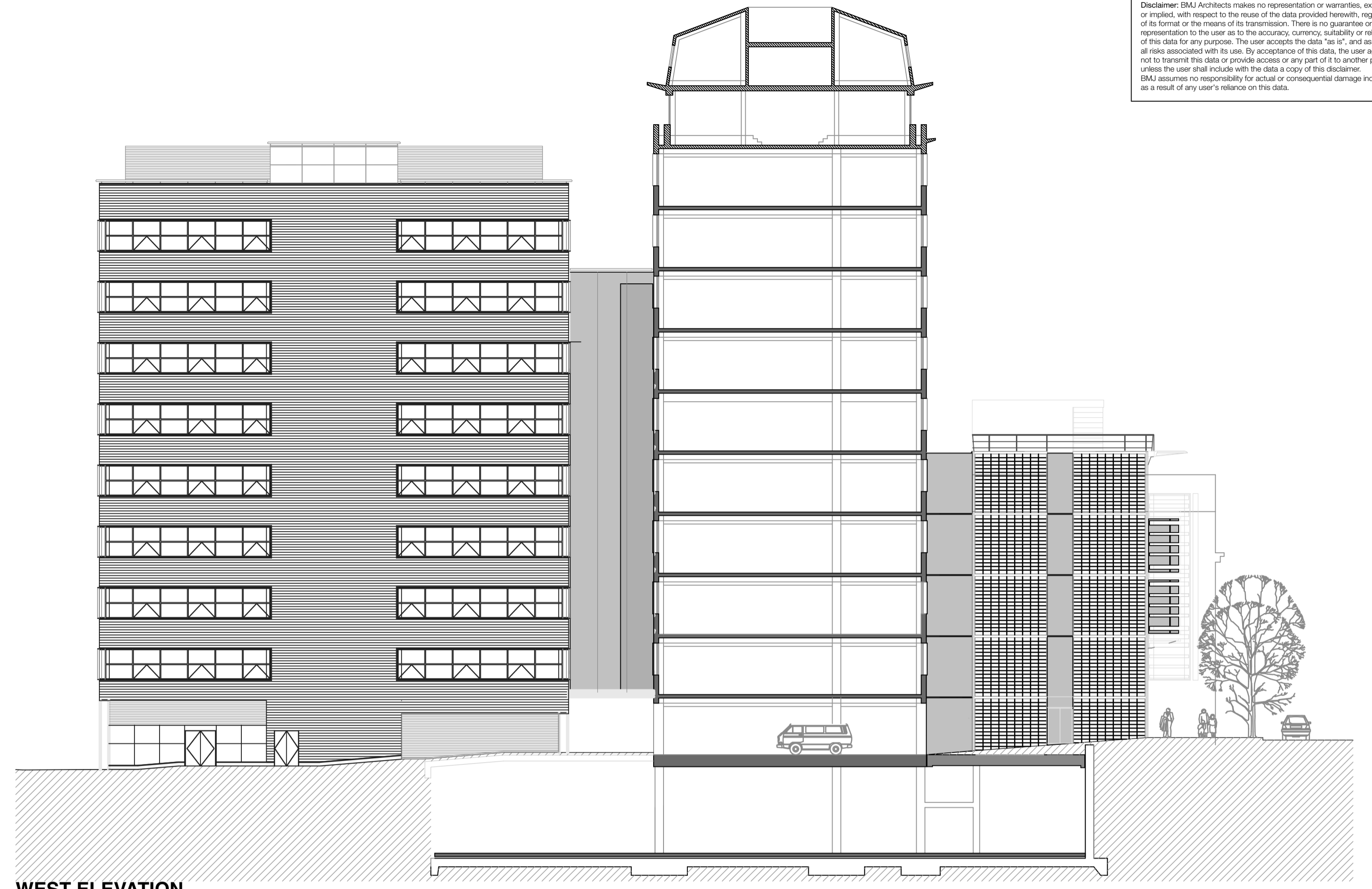


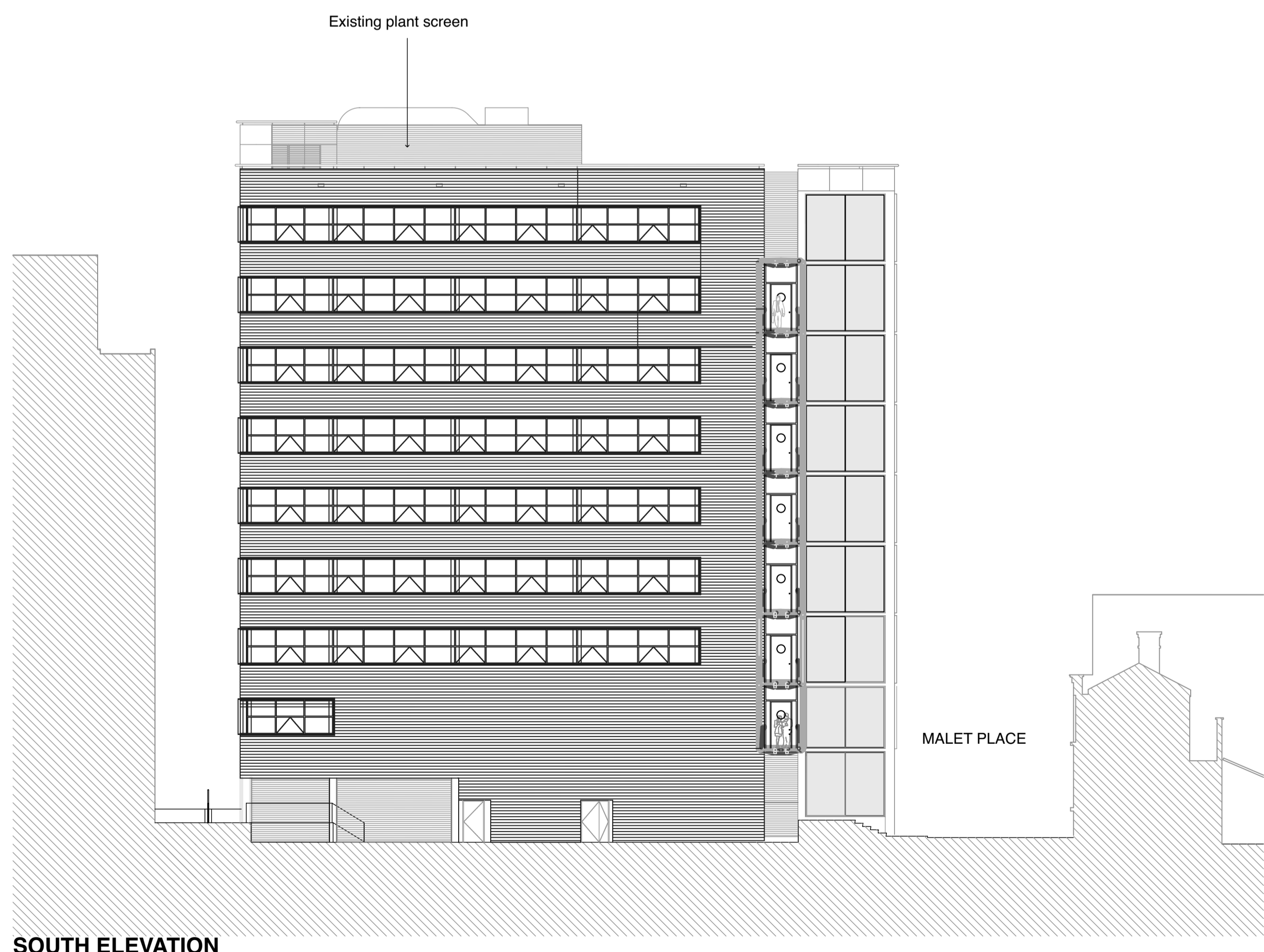
Disclaimer: BMJ Architects makes no representation or warranties, express or implied, with respect to the reuse of the data provided herein, regardless of its format or the means of its transmission. There is no guarantee or representation to the user as to the accuracy, currency, suitability or reliability of this data for any purpose. The user accepts the data "as is", and assumes all risks associated with its use. By acceptance of this data, the user agrees not to transmit the data or provide access or any part of it to another party unless the user shall include with the data a copy of this disclaimer. BMJ assumes no responsibility for actual or consequential damage incurred as a result of any user's reliance on this data.



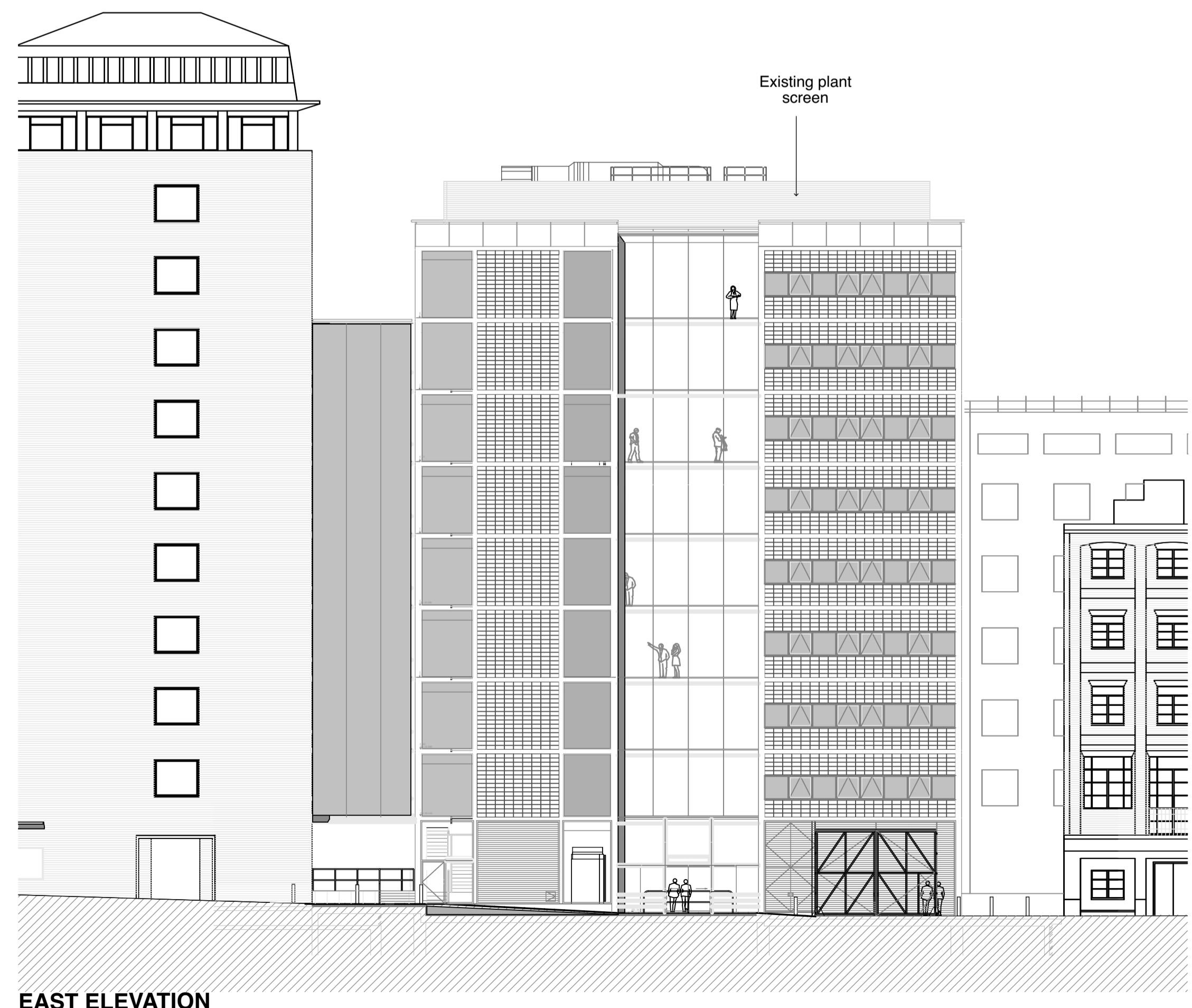
NORTH ELEVATION



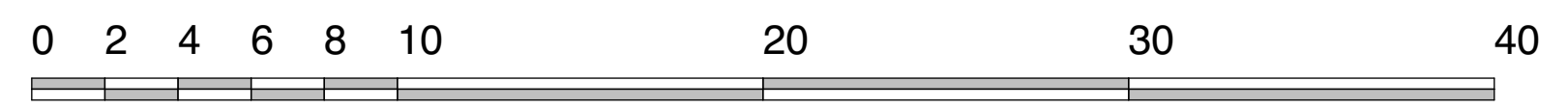
WEST ELEVATION



SOUTH ELEVATION



EAST ELEVATION



bmj architects

Glasgow / London
 Boswell Mitchell & Johnston +44 141 271 3200
 The Hub, 70 Pacific Quay glasgow@bmjarchitects.co.uk
 Glasgow, G51 1DZ www.bmjarchitects.co.uk

Client
University College London UCL

Project
**Malet Place
 Engineering Building (MPEB)
 Sixth Floor - EEE Laboratory**

Document Title
**Planning Application
 Existing Elevations**

Scale(s) @ 1:200 BMJ Project Ref: [3782]

Drawn by **SS** Approved by **NB** Date **12/05/2020**

Job No. Drawings No. Revision
3782 PL05 P1

© Boswell Mitchell & Johnston Ltd.