

9B Rosslyn Hill London

Planning Compliance Report
Report 20424.PCR.01

Sanya Polescuk Architects
8a Belsize Court Garages
Belsize Lane
London NW3 5AJ

Report 20424.PCR.01				
Revision History				
First Issue Date: 13/02/2020				
A	17/02/2020 Environmental survey data corrected, criteria amended and BS4142 assessment amended	D		
B	08/05/2020 Plant position amended and environmental survey updated accordingly. BS4142 calculations and assessment amended for updated position. Noise control measures included for new position	E		
C	11/05/2020 Plant position amended and noise mitigation updated	F		
Written by:		Checked by:		Approved by:
Billy Clark Assistant Acoustic Consultant		Victor C. Lindström MIOA Senior Acoustic Consultant		Kyriakos Papanagiotou MIOA Managing Director
Disclaimer KP Acoustics Ltd. has used reasonable skill and care to complete this technical document, within the terms of its brief and contract with the resources devoted to it by agreement with the client. We disclaim any responsibility to the client and others in respect of any matters outside the stated scope. This report is confidential to the client and we accept no responsibility to third parties to whom this report, or any part thereof, is made known. KP Acoustics Ltd. accepts no responsibility for data provided by other bodies and no legal liability arising from the use by other persons of data or opinions contained in this report. KP Acoustics Ltd. 2020				

Contents

1.0	INTRODUCTION	1
2.0	SITE SURVEYS	1
2.1	Site Description	1
2.2	Environmental Noise Survey Procedure	2
2.3	Equipment.....	3
3.0	RESULTS.....	4
4.0	NOISE ASSESSMENT GUIDANCE.....	4
4.1	BS4142: 2014 ' <i>Methods for rating and assessing industrial and commercial sound</i> '	4
4.2	Local Authority Guidance.....	6
5.0	NOISE IMPACT ASSESSMENT	6
5.1	Proposed Plant Installations	6
5.2	Closest Noise Sensitive Receiver.....	7
5.3	Calculations	7
6.0	NOISE CONTROL MEASURES.....	8
6.1	Anti-Vibration Mounting Strategy	9
7.0	CONCLUSION.....	9

List of Attachments

20424. TH1	Environmental Noise Time History
20424.Daytime.LA90	Statistical analysis for representative daytime L_{A90}
20424.Night-time.LA90	Statistical analysis for representative night-time L_{A90}
Appendix A	Glossary of Acoustics Terminology
Appendix B	Acoustic Calculations
Appendix C	Anti-Vibration Mounting Specification Reference Document

1.0 INTRODUCTION

KP Acoustics Ltd has been commissioned by Sanya Polescuk Architects, 8a Belsize Court Garages, Belsize Lane, London, NW3 5AJ, to undertake a noise impact assessment of a proposed plant unit installation serving the building at 9b Rosslyn Hill, London NW3 5UL.

A 24-hour environmental noise survey has been undertaken on site in order to prepare a noise impact assessment in accordance with BS4142:2014 '*Method for rating and assessing industrial and commercial sound*' as part of the planning requirements of the London Borough of Camden.

This report presents the methodology and results from the environmental survey, followed by calculations in accordance with BS4142 to provide an indication as to the likelihood of the noise emissions from the proposed plant unit installation having an adverse impact on the closest noise sensitive receiver. Mitigation measures will be outlined as appropriate.

2.0 SITE SURVEYS

2.1 Site Description

As shown in Figure 2.1, the site is bounded by Rosslyn Hill to the North, mixed commercial and residential properties to the West, residential properties and gardens to the South, and residential properties to the East.



Figure 2.1 Site Location Plan (Image Source: Google Maps)

Initial inspection of the site revealed that the background noise profile at the monitoring location was typical of an urban cityscape environment, with the dominant source being road traffic noise from the surrounding roads.

2.2 Environmental Noise Survey Procedure

Continuous automated monitoring was undertaken for the duration of the noise survey between 11:30 on 03/02/2020 and 11:30 on 04/02/2019.

The environmental noise measurement position, proposed plant installation locations, and the closest noise sensitive receiver relative to the plant installations are described within Table 2.1 and shown within Figures 2.2 and 2.3.




Icon	Descriptor	Location Description
	Noise Measurement Position	The meter was installed on a wall on the front terrace of the property, as shown in Figure 2.2. A correction of 3dB has been applied to account for non-free field conditions
	Closest Noise Sensitive Receiver	Front façade. 1 st Floor window. Residential house to the East at 9C Rosslyn Hill
	Proposed Plant Installation Location	Proposed plant installations are outlined in Section 5.1

Table 2.1 Measurement position and description



Figure 2.2 Site measurement position, identified receiver and proposed plant unit installation (Image Source: Google Maps)

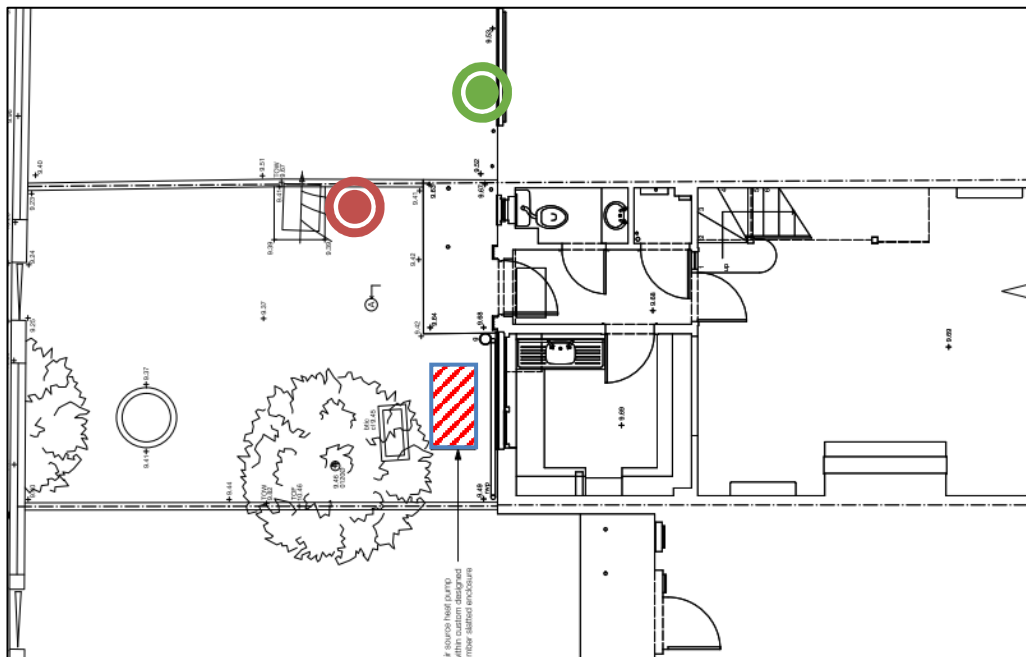


Figure 2.3 Site measurement position (Image Source: Google Maps)

The choice of the position was based both on accessibility and on collecting representative noise data in relation to the nearest noise sensitive receiver relative to the proposed plant installation.

Weather conditions were generally dry with light winds and therefore suitable for the measurement of environmental noise. The measurement procedure complied with ISO 1996-2:2017 Acoustics '*Description, measurement and assessment of environmental noise - Part 2: Determination of environmental noise levels*'.

2.3 Equipment

The equipment calibration was verified before and after use and no abnormalities were observed. The equipment used is described within Table 2.3.

Measurement instrumentation		Serial no.	Date	Cert no.
Noise Kit 4	Svantek Type 977B Class 1 Sound Level Meter	36453	22/02/2018	14008790
	Free-field microphone Aco Pacific 7052E	54143		
	Preamp Svantek 2v12L	41508		
	Svantek External windshield	-	-	-
Rion NC-74 Class 1 Calibrator		34904938	05/03/2019	04174/1

Table 2.3 Measurement instrumentation

3.0 RESULTS

The $L_{Aeq: 5min}$, $L_{Amax: 5min}$, $L_{A10: 5min}$ and $L_{A90: 5min}$ acoustic parameters were measured throughout the duration of the survey. Measured levels are shown as a time history in Figure 20424.TH1.

Representative background noise levels are shown in Table 3.1 for daytime and night-time.

It should be noted that the representative background noise level has been derived from the most commonly occurring $L_{A90, 5 min}$ levels measured during the environmental noise survey undertaken on site, as shown in 20424.Daytime.LA90 and 20424.Night-time.LA90 attached.

Time Period	Representative background noise level L_{A90} dB(A)
Daytime (07:00-23:00)	54
Night-time (23:00-07:00)	50

Table 3.1 Representative background noise levels

4.0 NOISE ASSESSMENT GUIDANCE

4.1 BS4142: 2014 'Methods for rating and assessing industrial and commercial sound'

British Standard BS4142:2014 'Methods for rating and assessing industrial and commercial sound' describes a method for rating and assessing sound of an industrial and/or commercial nature, which includes:

- Sound from industrial and manufacturing processes
- Sound from fixed installations which comprise mechanical and electrical plant and equipment
- Sound from the loading and unloading of goods and materials at industrial and/or commercial premises, and
- Sound from mobile plant and vehicles that is an intrinsic part of the overall sound emanating from premises or processes.

This Standard compares the Rating Level due to the noise source/s under assessment for a one-hour period during the daytime (07:00 – 23:00 hours) and a fifteen-minute period during the night-time (23:00 – 07:00 hours) with the existing background noise level in terms of an L_{A90} when the noise source is not operating.

It should be noted that the Rating Level is the Specific Sound Level in question ($L_{Aeq, Tr}$), including any relevant acoustic feature corrections, as follows:

- **Tonality** – *‘For sound ranging from not tonal to prominently tonal the Joint Nordic Method gives a correction of between 0dB and +6dB for tonality. Subjectively, this can be converted to a penalty of 2dB for a tone which is just perceptible at the noise receptor, 4dB where it is clearly perceptible, and 6dB where it is highly perceptible’*
- **Impulsivity** – *‘A correction of up to +9dB can be applied for sound that is highly impulsive, considering both the rapidity of the change in sound level and the overall change in sound level. Subjectively, this can be converted to a penalty of 3dB for impulsivity which is just perceptible at the noise receptor, 6dB where it is clearly perceptible, and 9dB where it is highly perceptible’*
- **Intermittency** – *‘If the intermittency is readily distinctive against the residual acoustic environment, a penalty of 3dB can be applied’*
- **Other sound characteristics** – *‘Where the specific sound features characteristics that are neither tonal nor impulsive, though otherwise are readily distinctive against the residual acoustic environment, a penalty of 3dB can be applied’*

Once the Rating Level has been obtained, the representative background sound level is subtracted from the Rating Level to obtain an initial estimate of the impact, as follows:

- Typically, the greater this difference, the greater the magnitude of the impact
- A difference of around +10 dB or more is likely to be an indication of a significant adverse impact, depending on the context
- A difference of around +5 dB could be an indication of an adverse impact, depending on the context
- The lower the rating level is relative to the measured background sound level, the less likely it is that there will be an adverse impact or significant adverse impact. Where the rating level does not exceed the background sound level, this is an indication of the specific sound having a low impact, depending on the context

NOTE: Adverse impacts may include but not be limited to annoyance and sleep disturbance. Not all adverse impacts will lead to complaints and not every complaint is proof of an adverse impact.

The initial estimate of the impact may then be modified by taking consideration of the context in which the sound occurs.

4.2 Local Authority Guidance

The guidance provided by The London Borough of Camden for noise emissions of new plant in this instance is as follows:

The noise criteria, as per the Local Plan 2017 of London Borough of Camden, British Standard 4142:2014 'Methods for rating and assessing industrial and commercial sound' should be considered as the main reference document for the assessment. The resultant 'Rating Level' would be considered as follows:

Period	Assessment Location	Rating Level Acceptability Range		
		Green: noise is considered to be at an acceptable level	Amber: noise is observed to have an adverse effect level, but which may be considered acceptable when assessed in the context of other merits of the development	Red: noise is observed to have a significant adverse effect.
Daytime (7:00-23:00)	Garden used for main amenity (free field) and Outside living or dining or Bedroom window (façade)	10dB below background	9 dB below and 5dB above background	5dB above background
Night-time (23:00-7:00)	Outside bedroom window (façade)	10dB below background and no events exceeding 57dB L_{Amax}	9db below and 5dB above background or noise events between 57dB and 88dB L_{Amax}	5dB above background and/or events exceeding 88dB L_{Amax}

Table 4.1 Camden noise criteria for plant and machinery

5.0 NOISE IMPACT ASSESSMENT

5.1 Proposed Plant Installations

It is understood that the proposed plant installation is comprised of the following units:

- 1 No. Daikin PUHZ-W-VAA Heat Pump

The proposed installation location for the Daikin heat pump will be externally of the building on the properties front terrace at ground floor level, as shown in Figure 2.2 and 2.3 above.

The noise emission levels as provided by the manufacturer for the unit is shown in Table 5.1.

Unit	Descriptor	Octave Frequency Band (Hz)								Overall (dBA)
		63	125	250	500	1k	2k	4k	8k	
Daikin PUHZ-W-VAA	SPL@1m	59	54	51	51	48	44	38	29	53

Table 5.1 Plant Units Noise Emission Levels as provided by the manufacturer

5.2 Closest Noise Sensitive Receiver

The closest noise sensitive receiver to the proposed installation location has been identified as being a residential window of 9C Rosslyn Hill, located approximately 4 metres from the proposed plant installation location, as shown in Figures 2.2 and 2.3.

5.3 Calculations

The ‘Specific Sound Level’ of each plant unit installation has been calculated at 1m from the closest receiver using the noise levels shown in Table 5.1, and corrected due to different acoustic propagation features such as distance, reflective surfaces, screening elements, etc. Detailed calculations for each plant unit installation are shown in Appendix B.

The ‘Rating Level’ of the plant installation has been assessed following the guidelines of BS4142 for the night-time period when the plant would be operational, with a subsequent conclusion taking into consideration the above context. The full BS4142 assessment is presented in Table 5.2.

BS4142 Assessment		
Source:	Plant unit installed at 9B Rosslyn Hill	
Operating Period:	Night-time	
Reference time interval (T_r):	15 minutes	
Receiver:	1st Floor residential window of 9C Rosslyn Hill to the East	
Element	Level (dB)	Comment
Specific Sound Level $L_s = L_{Aeq, T_r}$	40	Equivalent continuous A-weighted sound pressure level produced by the specific sound source at the assessment location over a given reference time interval, T_r . In this case, the specific sound levels take into consideration published noise data from the manufacturers, with appropriate corrections for attenuation due to distance, reflections, and any screening or proposed mitigation

Representative Background Noise Level $L_{A90, T}$	50	Sound pressure level that is exceeded by the residual sound at the assessment location for 90% of a given time interval, T . Derived using the most common occurring levels $L_{A90, 5min}$ during the environmental noise survey undertaken on site
Acoustic Feature Correction	+0	Due to the lack of tonal bands in the plants operational noise level and the expected constant noise it will emit it is unlikely that any acoustic features will be present during its operation. Due to the high level of background noise in the surrounding area, it is also unlikely that any acoustics features if present, would be audible enough to cause disturbance to receivers
Rating Level	50	Rating Level = Specific Sound Level + Acoustic Feature Corrections
Excess of rating over background sound level	-10	
Assessment Indication		
Assessment indicates that the rating level falls within the green rating of the BS4142 acceptability range and would not cause adverse impact upon the closest noise sensitive receivers.		

Table 5.2 BS4142 assessment

6.0 NOISE CONTROL MEASURES

In order to control the noise emissions from the Daikin PUHZ-W-VAA unit installed on the front terrace of 9B Rosslyn Hill, we would recommend that a plant enclosure is installed which should provide the minimum insertion loss levels shown in Table 6.2.

Unit	Insertion Loss Levels (dB) in each Octave Frequency Band							
	63Hz	125Hz	250Hz	500Hz	1kHz	2kHz	4kHz	8kHz
Louvres of acoustic enclosure	-1	-2	-3	-5	-5	-3	-2	-1

Table 6.2 Insertion loss figures to be provided by acoustic enclosure

To provide suitable attenuation, the enclosure would need to include a horizontal or vertical parapet on top and two panels either side. The level of attenuation required can be comfortably achieved using timber panels.

It is understood that the client intends to install a three-sided timber enclosure with a timber louvre around the unit.

Based on the level of attenuation required, it can be confirmed that the proposed timber enclosure will provide sufficient attenuation, ensuring that the noise emission level at the closest sensitive receiver is in compliance with the requirements of the London Borough of Camden.

6.1 Anti-Vibration Mounting Strategy

In the case of all plant units, appropriate anti-vibration mounts should be installed in order to ensure that vibrations do not give rise to structure-borne noise. Appendix C outlines detailed advice in order to ensure that the system installer selects the appropriate anti-vibration mount for the installation.

It is the supplier's responsibility to ensure that all mountings offered are suitable for the loads, operating and environmental conditions which will prevail.

7.0 CONCLUSION

An environmental noise survey has been undertaken at 9B Rosslyn Hill, London, NW3 5UL, by KP Acoustics Ltd between 11:30 on 03/02/2020 and 11:30 on 04/02/2020. The results of the survey have enabled a representative background noise level to be set.

Manufacturer's noise data of proposed plant unit has been used to obtain Specific and Rated Noise Level at the nearest noise sensitive receiver in accordance with British Standard BS4142:2014 for compliance with the London Borough of Camden's requirements.

The rating level was compared with the representative background noise level to assess the likelihood of impact considering the environmental noise context of the area as per the requirements of BS4142:2014.

It has been concluded that noise emissions from the proposed plant units would not have an adverse impact on the nearest residential receivers.

9B Rosslyn Hill, London
Environmental Noise Time History
From 03 February 2020 To 04 February 2020

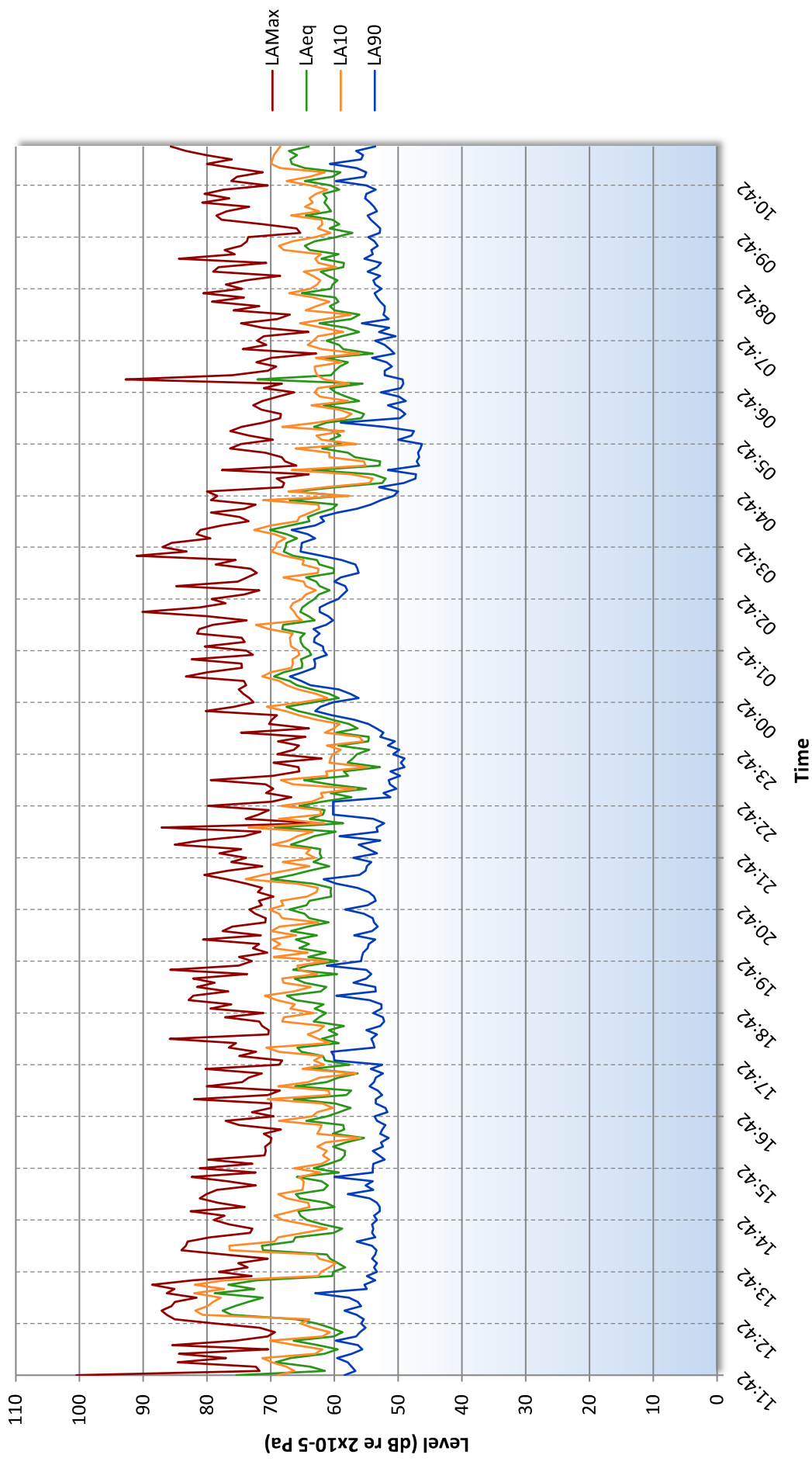


Figure 20424.TH1

9B Rosslyn Hill, London

Representative Daytime Background Noise Level
From 03 February 2020 To 04 February 2020

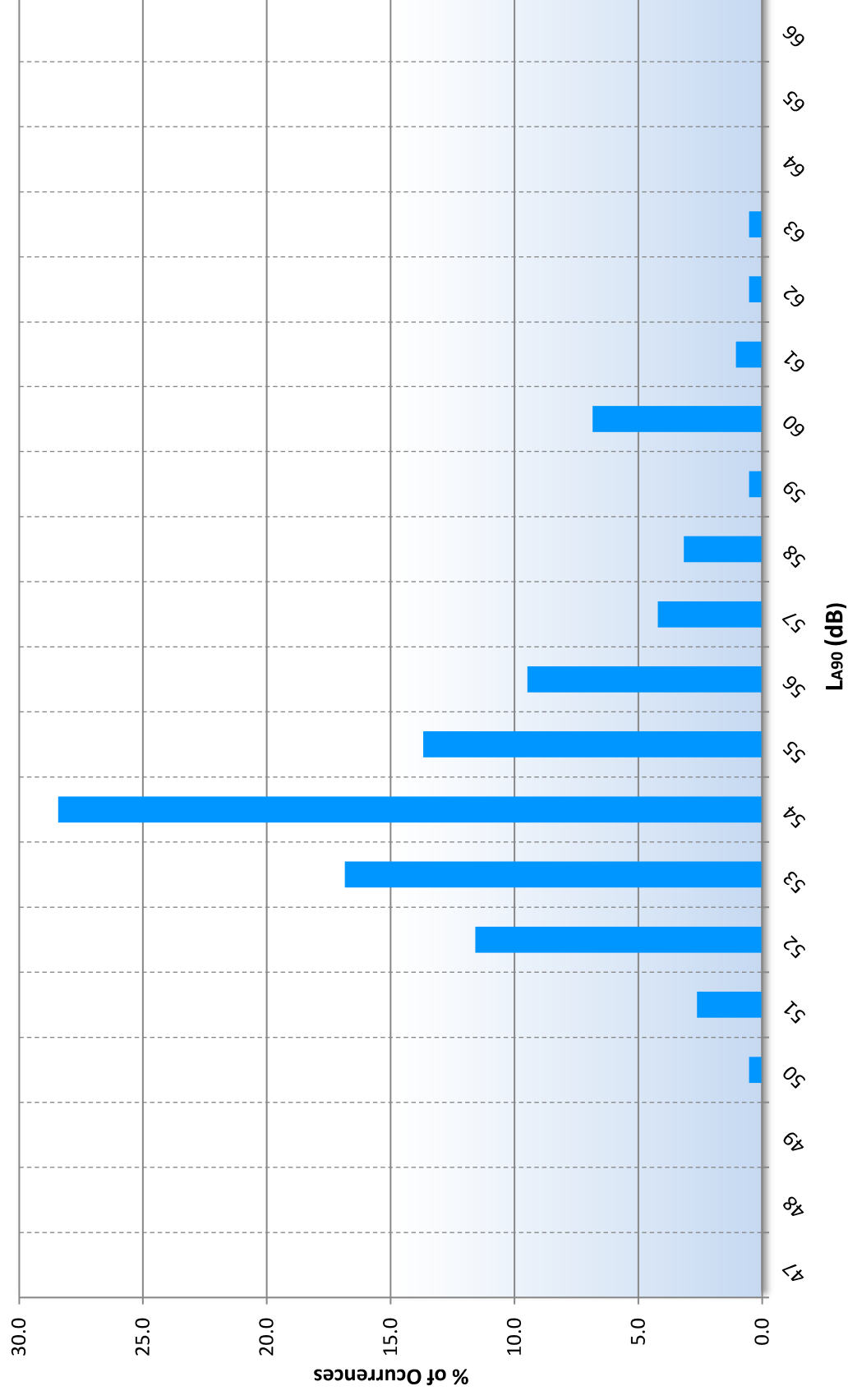


Figure 20424.L90

9B Rosslyn Hill, London

Representative Night-time Background Noise Level
From 03 February 2020 To 04 February 2020

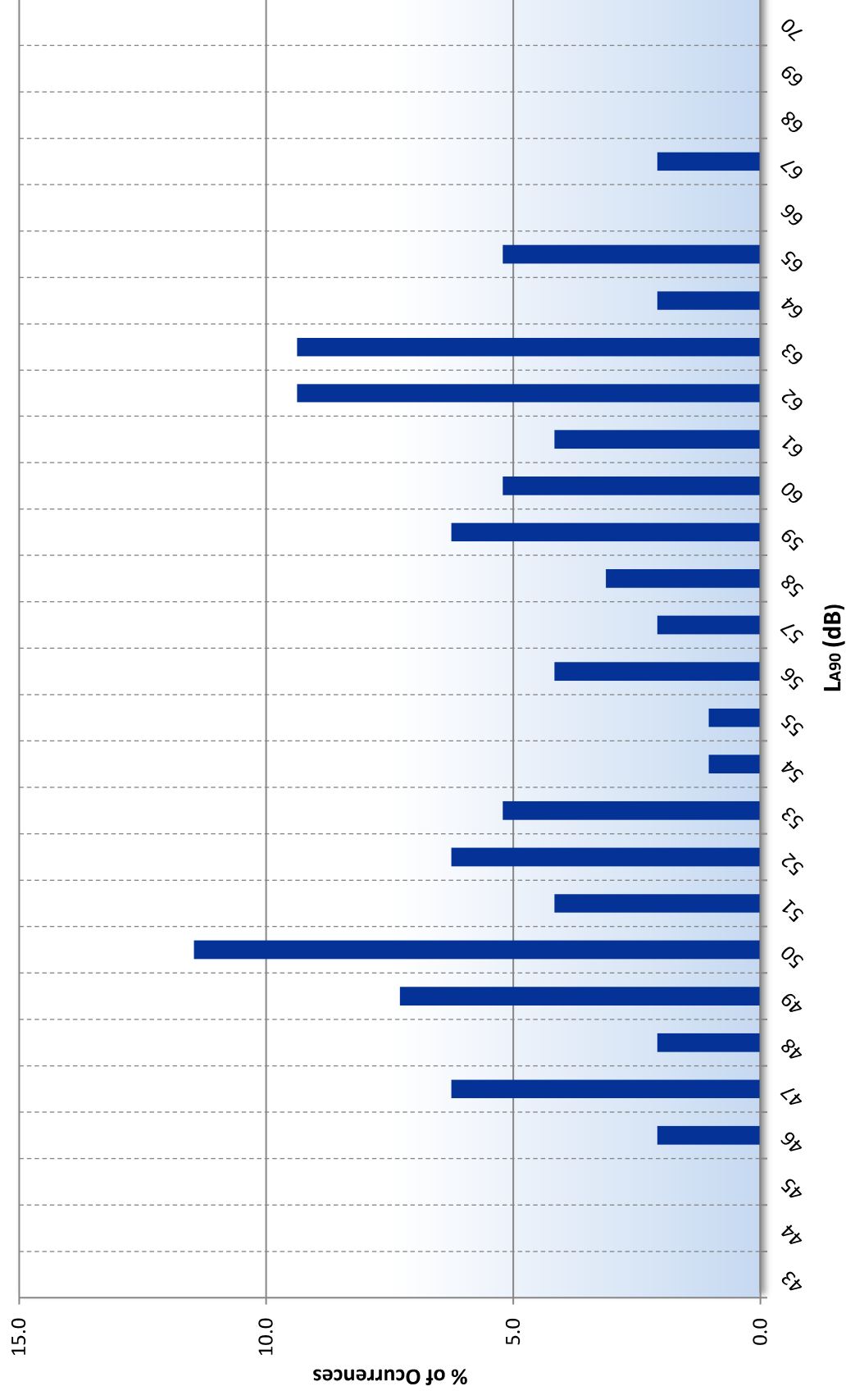


Figure 20424.L90

GENERAL ACOUSTIC TERMINOLOGY

Decibel scale - dB

In practice, when sound intensity or sound pressure is measured, a logarithmic scale is used in which the unit is the 'decibel', dB. This is derived from the human auditory system, where the dynamic range of human hearing is so large, in the order of 10^{13} units, that only a logarithmic scale is the sensible solution for displaying such a range.

Decibel scale, 'A' weighted - dB(A)

The human ear is less sensitive at frequency extremes, below 125Hz and above 16Khz. A sound level meter models the ears variable sensitivity to sound at different frequencies. This is achieved by building a filter into the Sound Level Meter with a similar frequency response to that of the ear, an A-weighted filter where the unit is dB(A).

L_{eq}

The sound from noise sources often fluctuates widely during a given period of time. An average value can be measured, the equivalent sound pressure level L_{eq} . The L_{eq} is the equivalent sound level which would deliver the same sound energy as the actual fluctuating sound measured in the same time period.

L_{10}

This is the level exceeded for no more than 10% of the time. This parameter is often used as a "not to exceed" criterion for noise.

L_{90}

This is the level exceeded for no more than 90% of the time. This parameter is often used as a descriptor of "background noise" for environmental impact studies.

L_{max}

This is the maximum sound pressure level that has been measured over a period.

Octave Bands

In order to completely determine the composition of a sound it is necessary to determine the sound level at each frequency individually. Usually, values are stated in octave bands. The audible frequency region is divided into 11 such octave bands whose centre frequencies are defined in accordance with international standards. These centre frequencies are: 16, 31.5, 63, 125, 250, 500, 1000, 2000, 4000, 8000 and 16000 Hertz.

Environmental noise terms are defined in BS7445, *Description and Measurement of Environmental Noise*.

APPLIED ACOUSTIC TERMINOLOGY

Addition of noise from several sources

Noise from different sound sources combines to produce a sound level higher than that from any individual source. Two equally intense sound sources operating together produce a sound level which is 3dB higher than a single source and 4 sources produce a 6dB higher sound level.

Attenuation by distance

Sound which propagates from a point source in free air attenuates by 6dB for each doubling of distance from the noise source. Sound energy from line sources (e.g. stream of cars) drops off by 3dB for each doubling of distance.

Subjective impression of noise

Hearing perception is highly individualised. Sensitivity to noise also depends on frequency content, time of occurrence, duration of sound and psychological factors such as emotion and expectations. The following table is a guide to explain increases or decreases in sound levels for many scenarios.

Change in sound level (dB)	Change in perceived loudness
1	Imperceptible
3	Just barely perceptible
6	Clearly noticeable
10	About twice as loud

Transmission path(s)

The transmission path is the path the sound takes from the source to the receiver. Where multiple paths exist in parallel, the reduction in each path should be calculated and summed at the receiving point. Outdoor barriers can block transmission paths, for example traffic noise. The effectiveness of barriers is dependent on factors such as its distance from the noise source and the receiver, its height and construction.

Ground-borne vibration

In addition to airborne noise levels caused by transportation, construction, and industrial sources there is also the generation of ground-borne vibration to consider. This can lead to structure-borne noise, perceptible vibration, or in rare cases, building damage.

Sound insulation - Absorption within porous materials

Upon encountering a porous material, sound energy is absorbed. Porous materials which are intended to absorb sound are known as absorbents, and usually absorb 50 to 90% of the energy and are frequency dependent. Some are designed to absorb low frequencies, some for high frequencies and more exotic designs being able to absorb very wide ranges of frequencies. The energy is converted into both mechanical movement and heat within the material; both the stiffness and mass of panels affect the sound insulation performance.

APPENDIX B

9B Rosslyn Hill, London

PLANT NOISE EMISSIONS CALCULATIONS

Source: Plant units installed at 9B Rosslyn Hill Receiver: 1st floor window of 9C Rosslyn Hill	Frequency, Hz								dB(A)
	63	125	250	500	1k	2k	4k	8k	
Daikin PUHZ-W-VAA (Sound Pressure Level @1m)	59	54	51	51	48	44	38	29	53
Correction due to surface reflections (1), dB	3	3	3	3	3	3	3	3	
Minimum attenuation provided by distance (4m), dB	-12	-12	-12	-12	-12	-12	-12	-12	
Minimum attenuation required by proposed acoustic enclosure, dB	-1	-2	-3	-5	-5	-3	-2	-1	
Total Specific Level of all Plant Unit Installations at Receiver	49	43	39	37	34	32	27	19	40
BS4142 Acoustic Feature Corrections									
Tonality	0	0	0	0	0	0	0	0	
Impulsivity	0	0	0	0	0	0	0	0	
Intermittency	0	0	0	0	0	0	0	0	
Total Rating Noise Level of all Plant Unit Installations at Receiver	49	43	39	37	34	32	27	19	40

*Tonality = +2 just perceptible, +4 clearly perceptible, +6 highly perceptible

Impulsivity= +3 just perceptible, +6 clearly perceptible, +9 highly perceptible

Intermittency = +3 if present

ANTI-VIBRATION MOUNTING SPECIFICATION REFERENCE DOCUMENT

1.0 General

- 1.1 All mountings shall provide the static deflection, under the equipment weight, shown in the schedules. Mounting selection should allow for any eccentric load distribution or torque reaction, so that the design deflection is achieved on all mountings under the equipment, under operating conditions.
- 1.2 It is the supplier's responsibility to ensure that all mountings offered are suitable for the loads, operating and environmental conditions which will prevail. Particular attention should be paid to mountings which will be exposed to atmospheric conditions to prevent corrosion.
- 1.3 All mountings shall be colour coded, or otherwise marked, to indicate their load capacity, to facilitate identification during installation.

Where use of resilient supports allows omission of pipe flexible connections for vibration/noise isolation, it shall be the Mechanical Service Consultant's or Contractor's responsibility to decide whether such devices are required to compensate for misalignment or thermal strain.

2.1 Type A Mounting (Caged Spring Type)

- 2.1.1 Each mounting shall consist of cast or fabricated telescopic top and bottom housings enclosing one or more helical steel springs as the principle isolation elements, and shall incorporate a built-in levelling device. The housing should be designed to permit visual inspection of the springs after installation, i.e. the spring must not be totally enclosed.
- 2.1.2 The springs shall have an outside diameter of not less than 75% of the operating height, and be selected to have at least 50% overload capacity before becoming coil-bound.
- 2.1.3 The bottom plate of each mounting shall have bonded to it a rubber/neoprene pad designed to attenuate any high frequency energy transmitted by the springs.
- 2.1.4 Mountings incorporating snubbers or restraining devices shall be designed so that the snubbing, damping or restraining mechanism is capable of being adjusted to have no significant effect during the normal running of the isolated machine.
- 2.1.5 All nuts, bolts or other elements used for adjustment of a mounting shall incorporate locking mechanisms to prevent the isolator going out of adjustment as a result of vibration or accidental or unauthorised tampering.

2.2 Type B Mounting (Open Spring Type)

- 2.2.1 Each mounting shall consist of one or more helical steel springs as the principal isolation elements, and shall incorporate a built-in levelling device.
- 2.2.2 The springs shall be fixed or otherwise securely located to cast or fabricated top and bottom plates, shall have an outside diameter of not less than 75% of the operating height, and shall be selected to have at least 50% overload capacity before becoming coil-bound.
- 2.2.3 The bottom plate shall have bonded to it a rubber/ neoprene pad designed to attenuate any high frequency energy transmitted by the springs.

2.3 Type C Mounting (Rubber/Neoprene Type)

Each mounting shall consist of a steel top plate and base plate completely embedded in oil resistant rubber/neoprene. Each mounting shall be capable of being fitted with a levelling device, and should have bolt holes in the base plate and a threaded metal insert in the top plate so that they can be bolted to the floor and equipment where required.

3.0 Plant Bases

3.1 Type A Bases (A.V. Rails)

An A.V. Rail shall comprise a steel beam with two or more height-saving brackets. The steel sections must be sufficiently rigid to prevent undue strain in the equipment and if necessary should be checked by the Structural Engineer.

3.2 Type B Bases (Steel Plant Bases)

Steel plant bases shall comprise an all-welded steel framework of sufficient rigidity to provide adequate support for the equipment, and fitted with isolator height saving brackets. The frame depth shall be approximately 1/10 of the longest dimension of the equipment with a minimum of 150 mm. This form of base may be used as a composite A.V. rail system.

3.3 Type C Bases (Concrete Inertia Base: for use with steel springs)

These shall consist of an all-welded steel pouring frame-work with height saving brackets, and a frame depth of approximately 1/12 of the longest dimension of the equipment, with a minimum of 100 mm. The bottom of the pouring frame should be blanked off, and concrete (2300 kg/m³) poured in over steel reinforcing rods positioned 35 mm above the bottom. The inertia base should be sufficiently large to provide support for all parts of the equipment, including any components which over-hang the equipment base, such as suction and discharge elbows on centrifugal pumps.