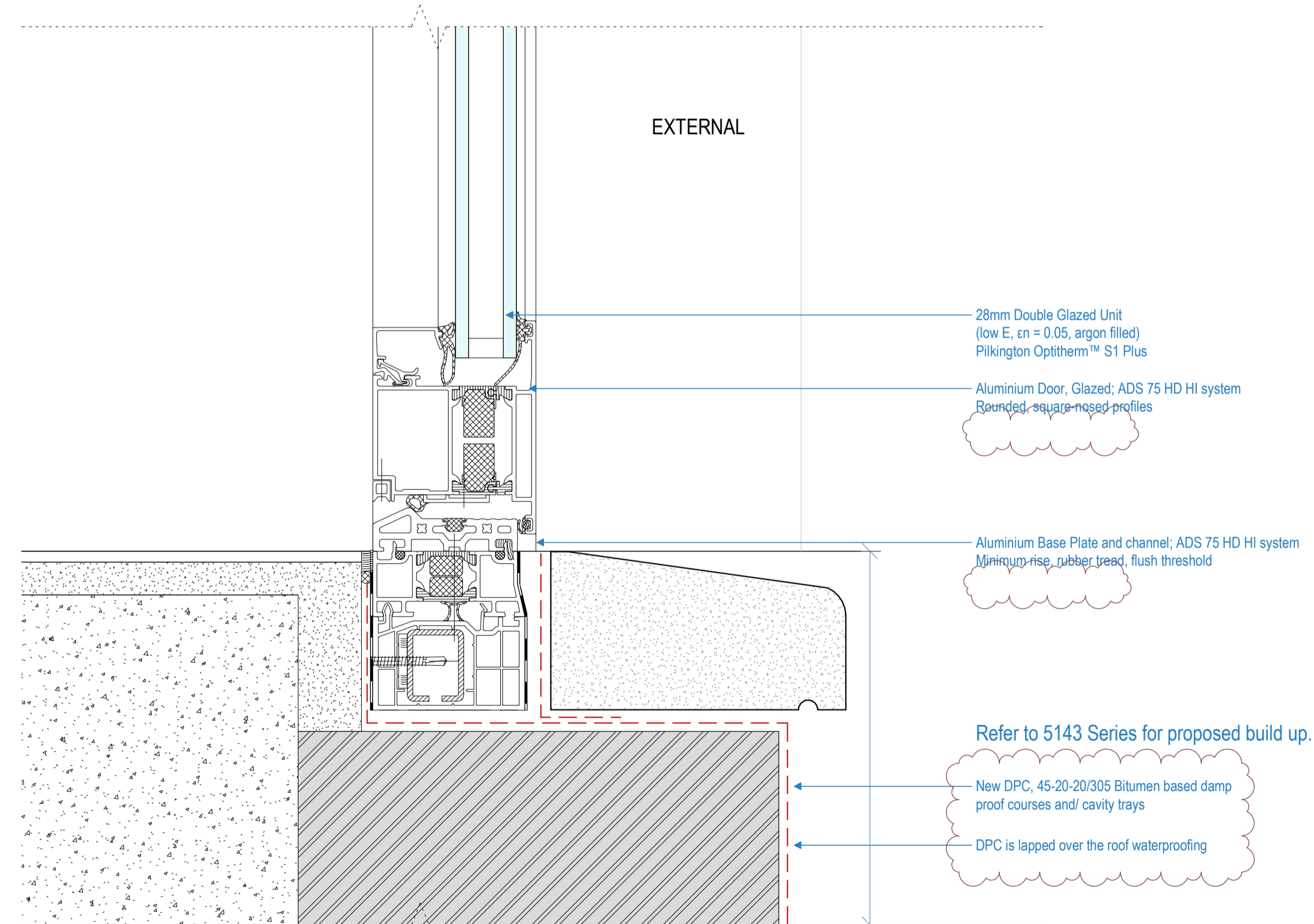
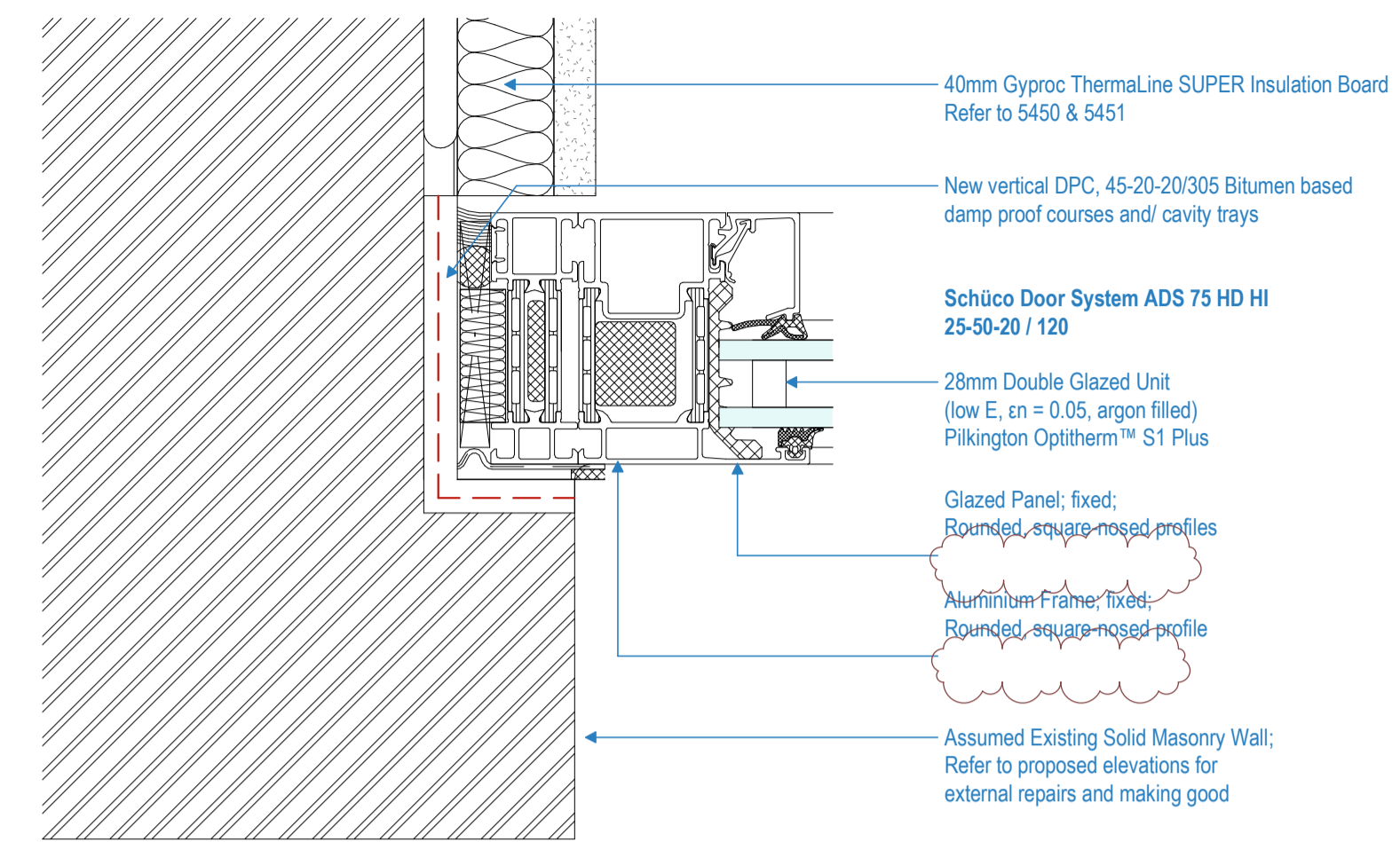


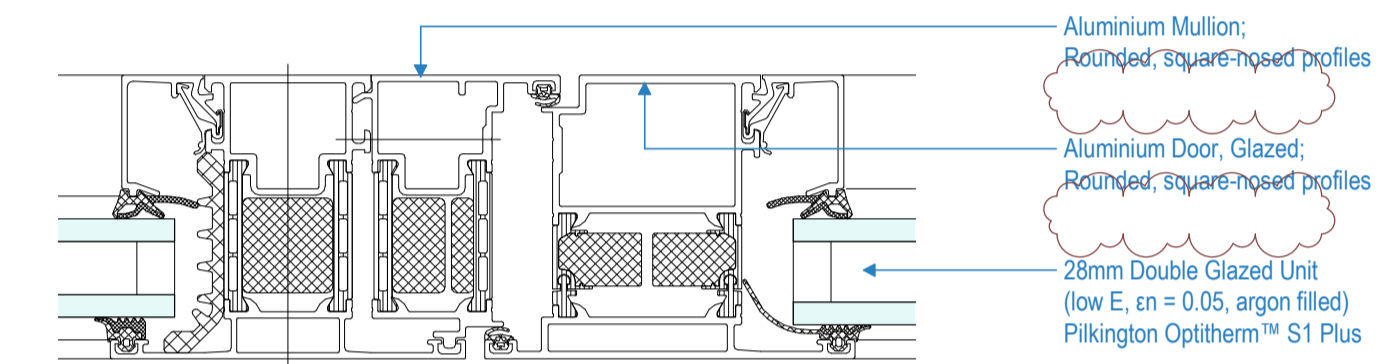
1 Section: External Door - Type N - Head Detail
5342 1:2



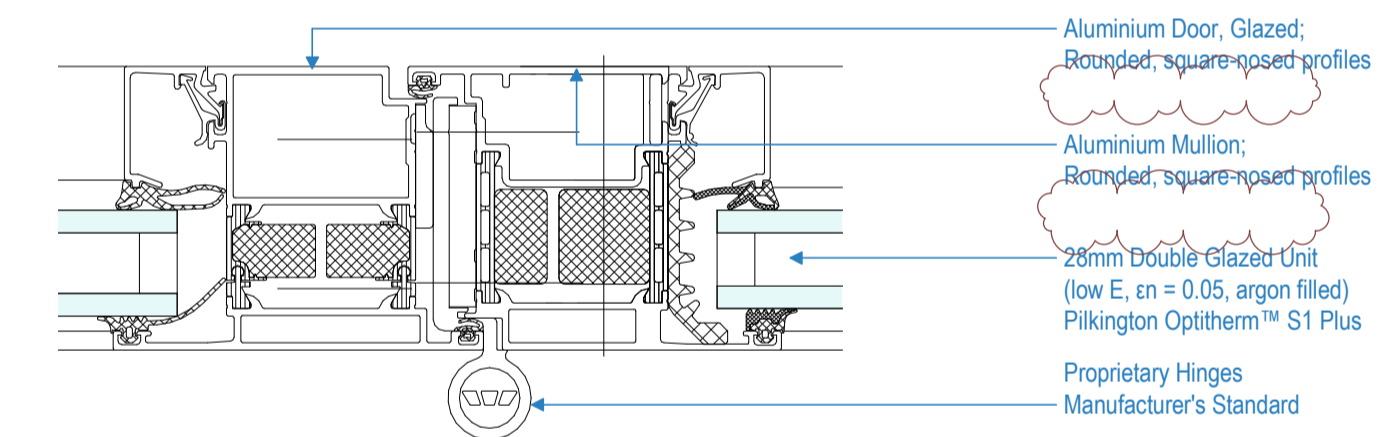
2 Section: External Door - Type N - Base Detail
5342 1:2



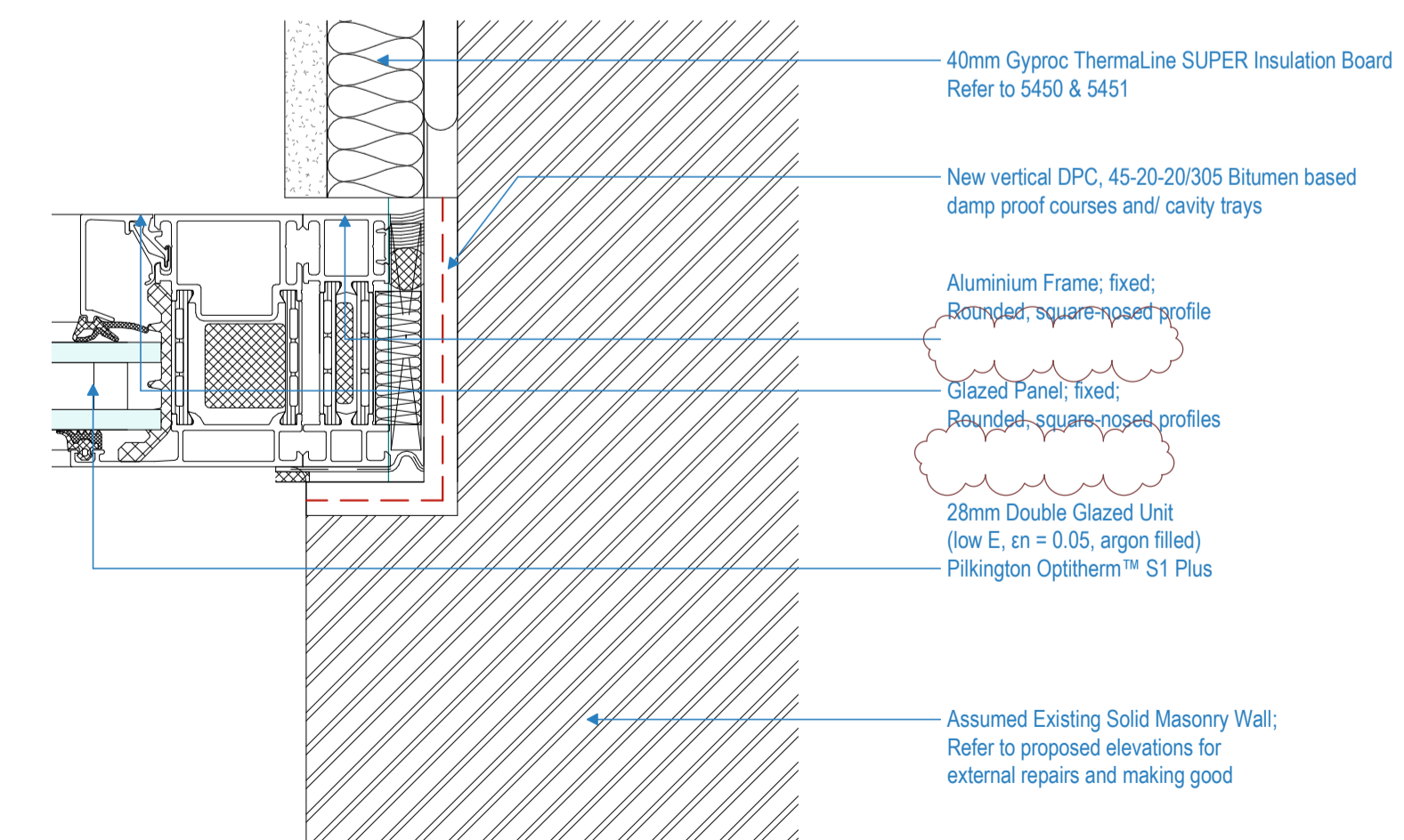
3 Plan: External Door - Type N - Jamb Detail (left)
5342 1:2



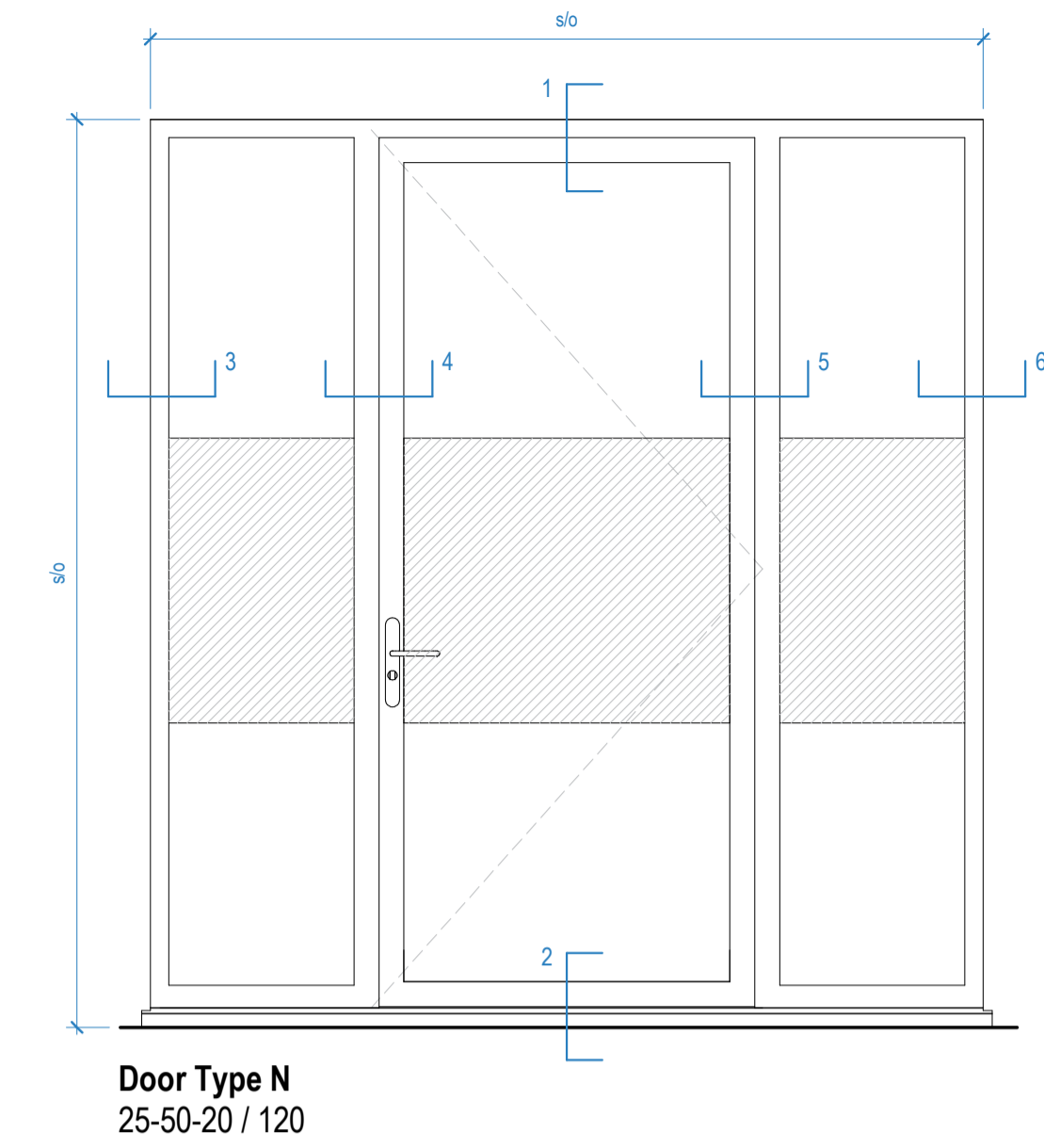
4 Section: External Door - Type N - Mullion Detail (left)
5342 1:2



5 Section: External Door - Type N - Mullion Detail (right)
5342 1:2



6 Section: External Door - Type N - Jamb Detail (right)
5342 1:2



Door Type N
25-50-20 / 120

Notes
1. Refer to 83 series for general notes

C1	22.10.18	Construction Issue - Door Package / LM / MJF	LM / MJF
A12	25.06.18	REVISED STAGE 4 ISSUE / LM / MJF	LM
A7	07.02.18	STAGE 4 SUBMISSION / LM	AML
P1	27.11.17	Draft Stage 4 Issue / JB	LM

Rev	Date	Details/ Amended by	Sign
-----	------	---------------------	------

sonnemanntoon
architects

Quality House
6-9 Quality Court
Chancery Lane
London WC2A 1HP
United Kingdom
tel: +44 (0)20 7580 8881
email: info@st-arch.co.uk
web: www.st-arch.co.uk
© This drawing is copyright

Do not scale this drawing. Architect to be informed of all discrepancies in dimensions. Contractor to check all dimensions on site.

Project title
ITALIAN HOSPITAL

Drawing title
DETAILS: DOORS + GLAZING
External Door - Type N

Scale	Status	Revision
1:2 @A1	CONSTR.	C1

Drawing number
1615-ST-Q1-XX-DR-A-5342

0 50 100 200mm