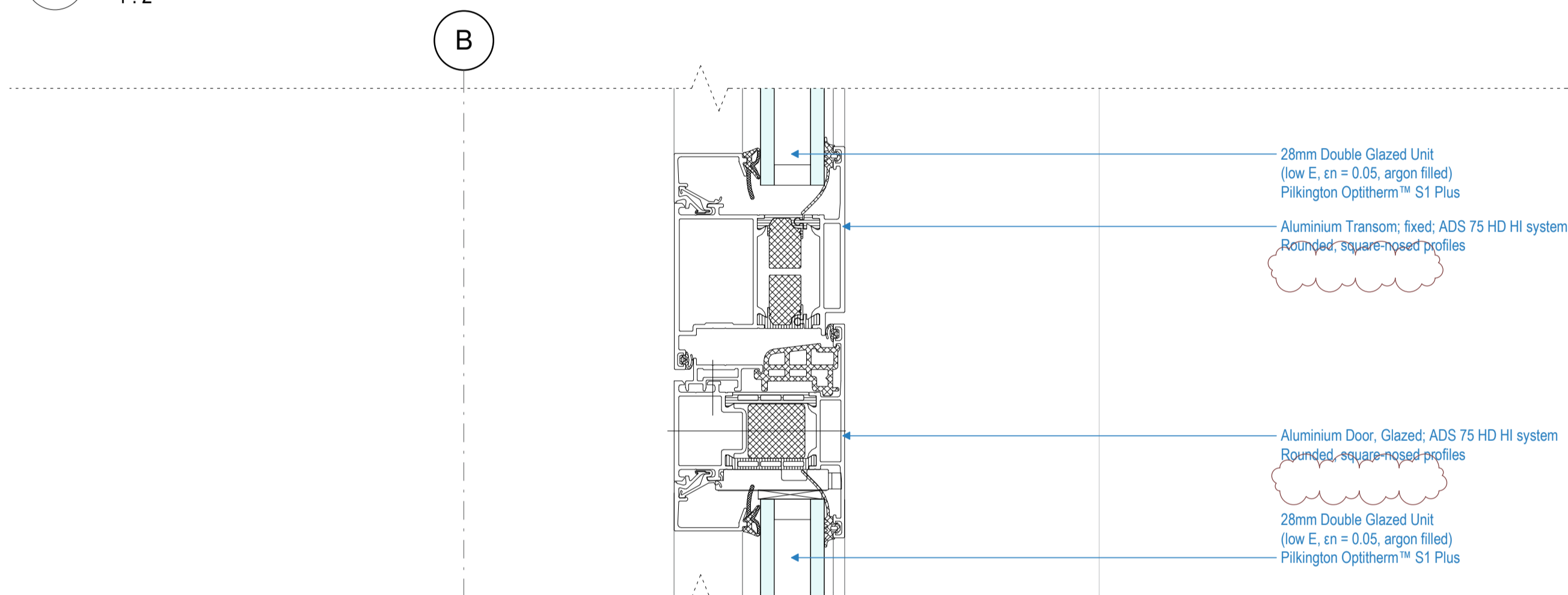
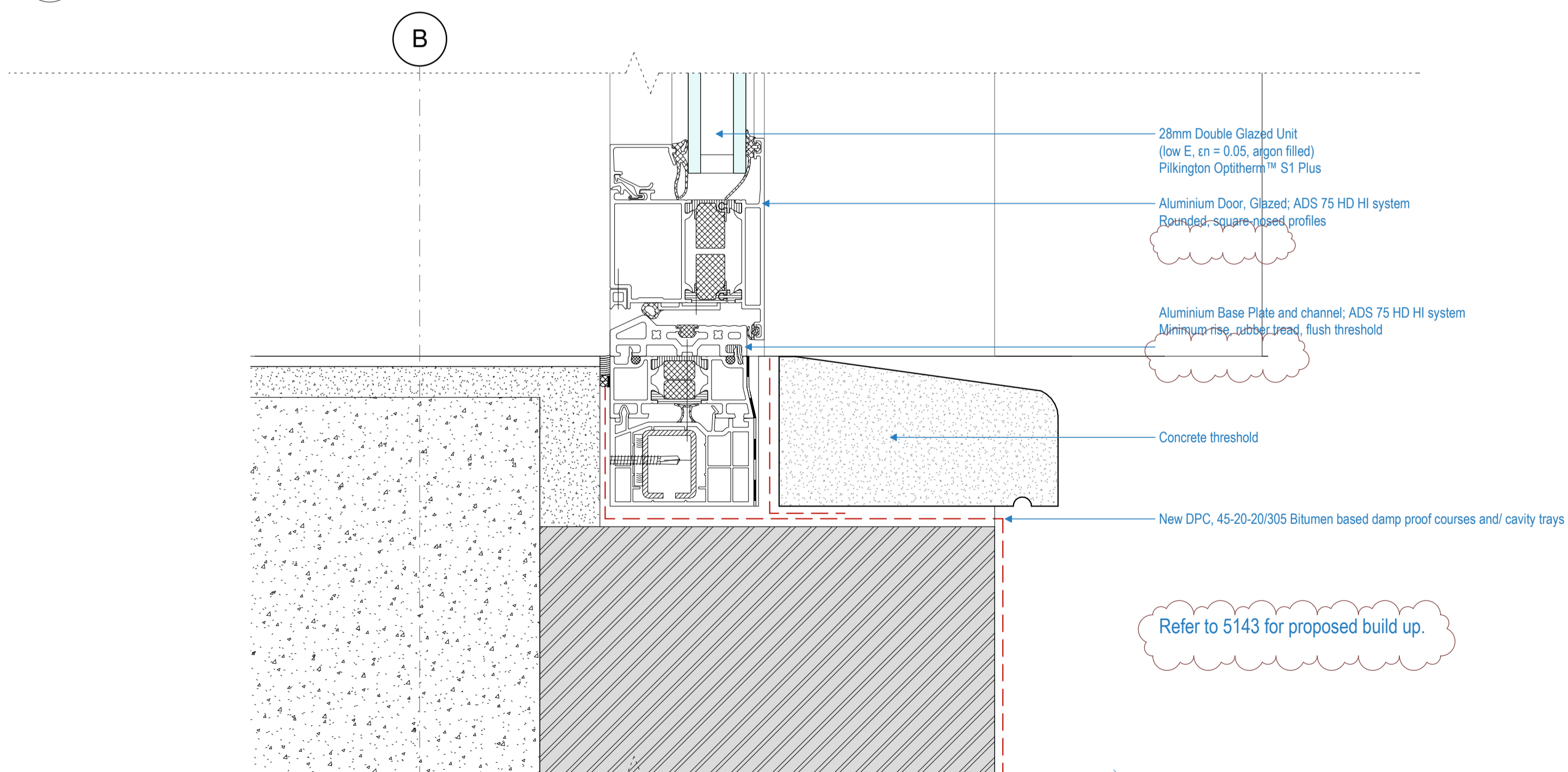


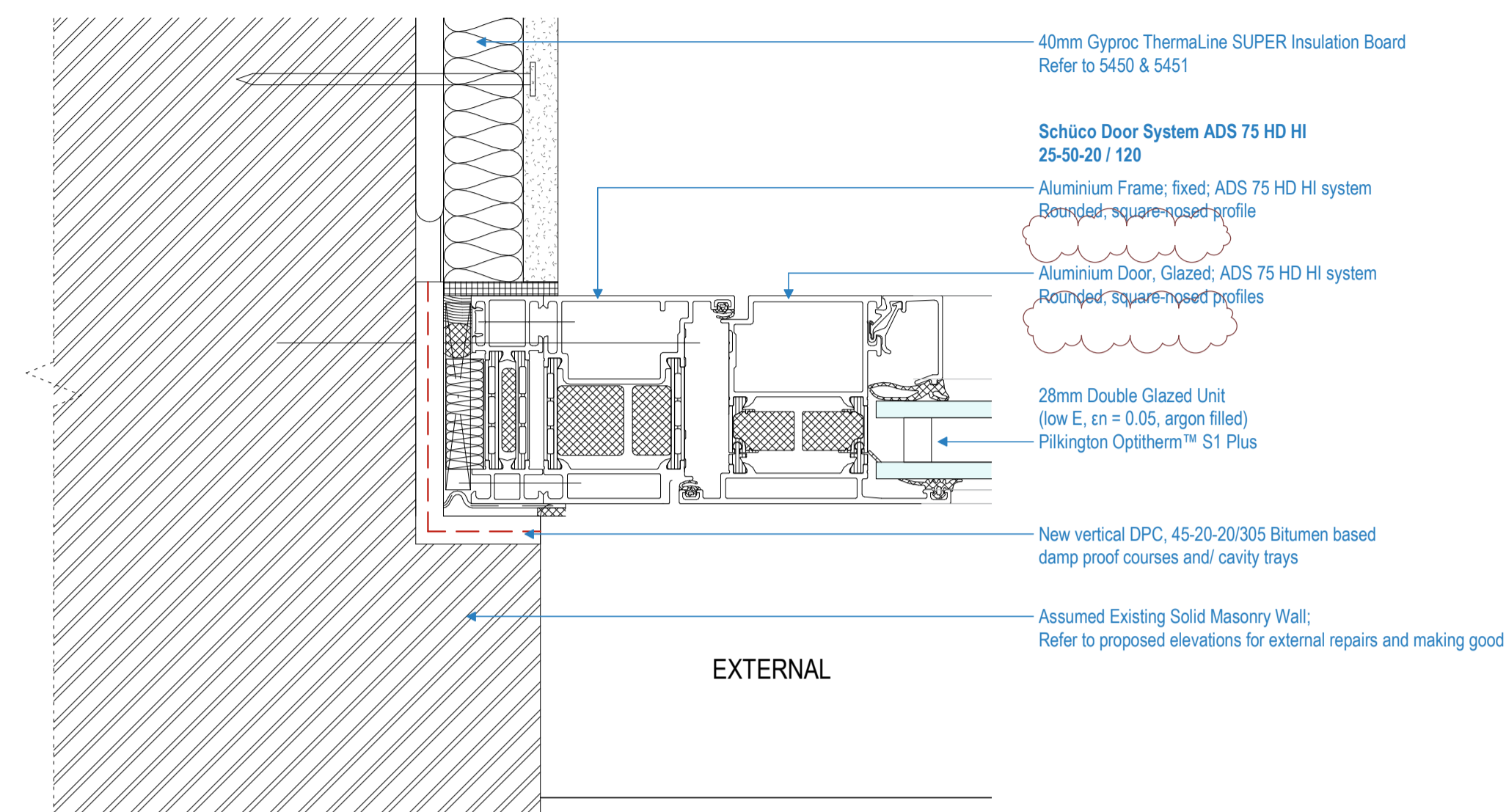
1 Section: External Door - Type M1 - Head Detail
5341 1:2



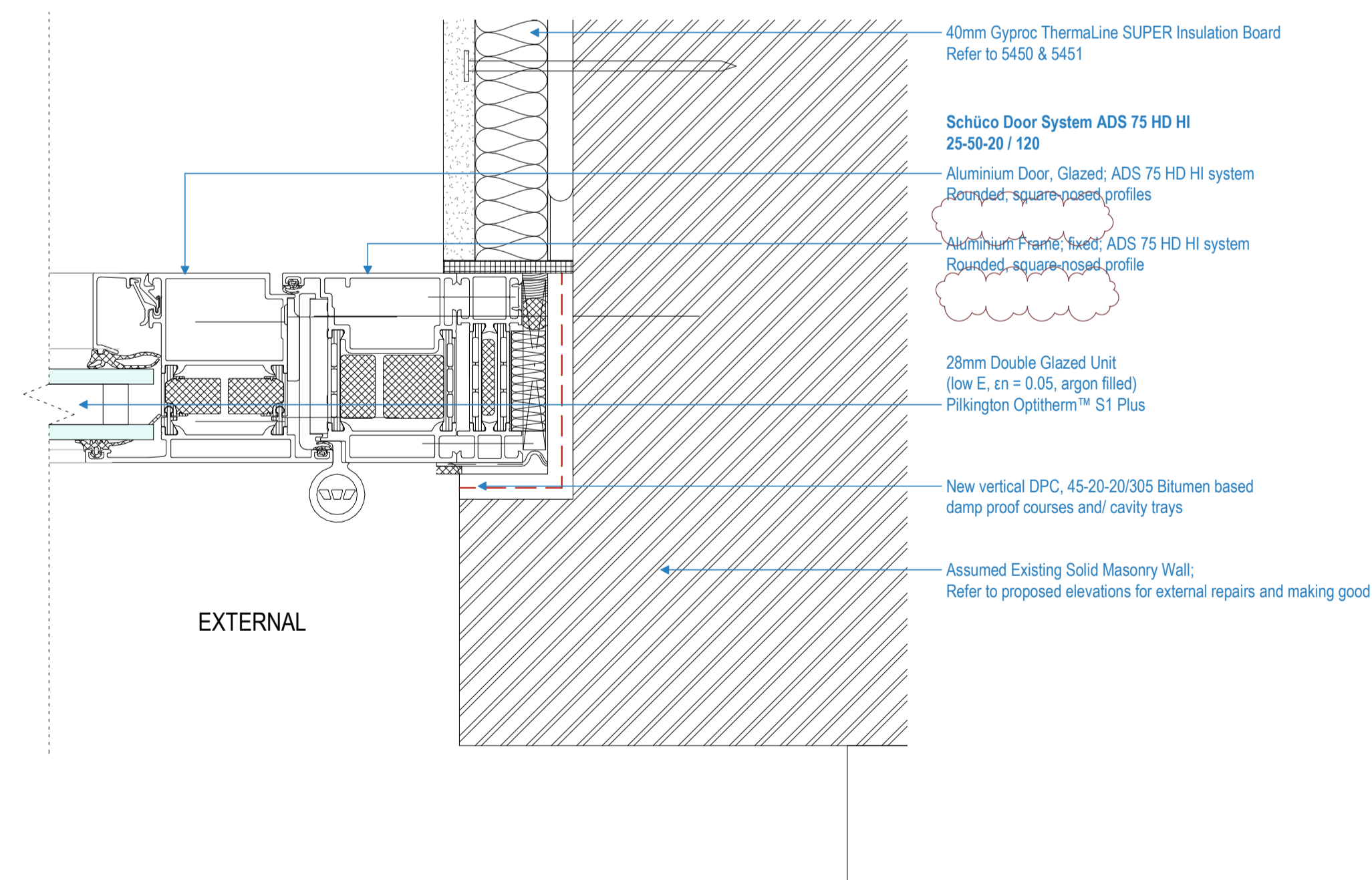
2 Section: External Door - Type M1 - Intermediate Detail
5341 1:2



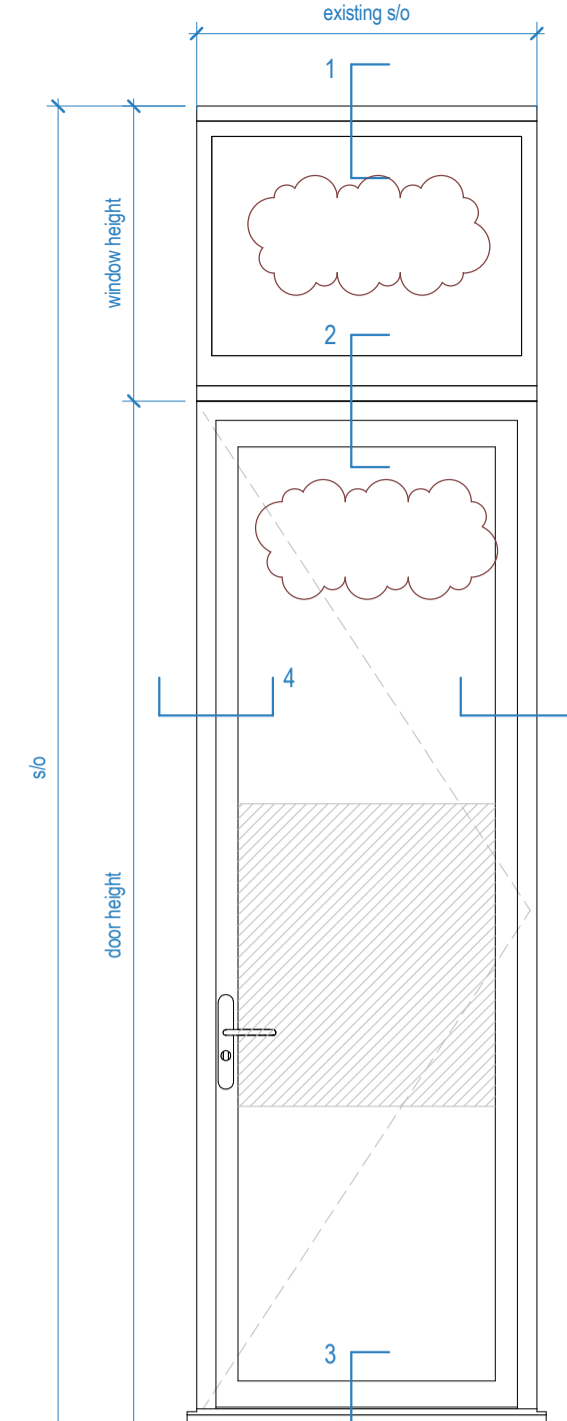
3 Section: External Door - Type M1 - Base Detail
5341 1:2



4 Plan: External Door - Type M1 - Jamb Detail (left)
5341 1:2



5 Plan: External Door - Type M1 - Jamb Detail (right)
5341 1:2



Door Type M1
Spec ref: 25-50-20 / 120

Notes

- Refer to 83 series for general notes

C1	22.10.18	Construction Issue - Door Package / LM / MJF	LM / MJF
A12	25.06.18	REVISED STAGE 4 ISSUE / LM / MJF	LM
A8	09.02.18	Stage 4 - Revised CW info following Kier queries / LM	LM
A7	07.02.18	STAGE 4 SUBMISSION / LM	AML
P1	27.11.17	Draft Stage 4 Issue / JB	LM

Rev	Date	Details/ Amended by	Sign
-----	------	---------------------	------

sonnemanntoon
architects

Quality House
6-9 Quality Court
Chancery Lane
London WC2A 1HP
United Kingdom
tel: +44 (0)20 7580 8881
email: info@st-arch.co.uk
web: www.st-arch.co.uk
© This drawing is copyright

Do not scale this drawing. Architect to be informed of all discrepancies in dimensions. Contractor to check all dimensions on site.

Project title
ITALIAN HOSPITAL
Drawing title
DETAILS: DOORS + GLAZING
External Door - Type M1
Scale Status Revision
1:2 @A1 CONSTR. C1

Drawing number
1615-ST-Q1-XX-DR-A-5341

