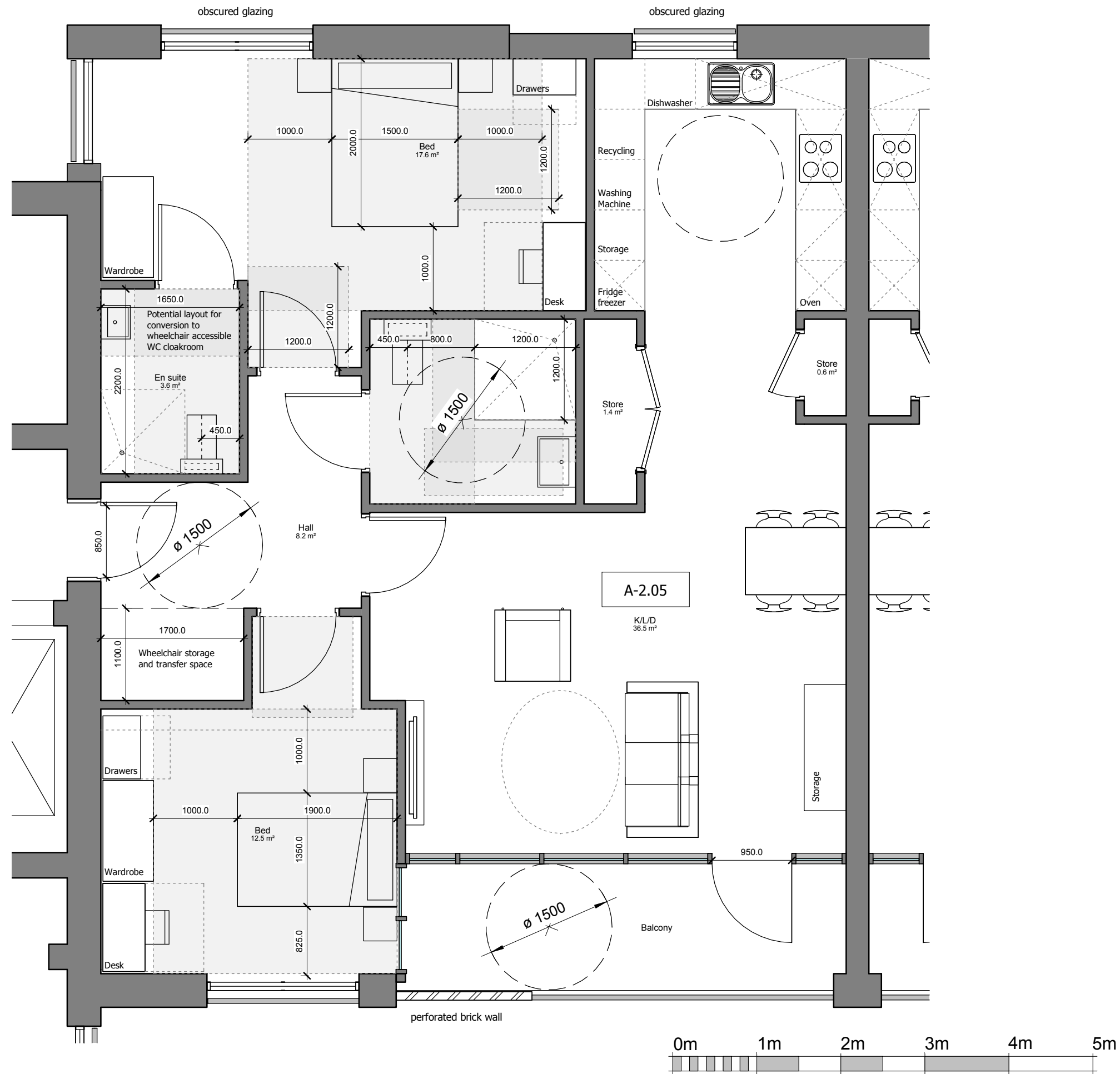


The scaling of this drawing cannot be assured

Revision	Date	Drn	Ckd
A	19/03/19	DC	PN
Amendments in response to Access Officer's comments			
B	13/05/19	DC	PN
Updated in response to access comments			



PLANNING

Project
11-12 Ingestre Road, Camden
Assisted Living Development

Drawing Title
Typical Wheelchair user adaptable
dwellings - M4(3) Compliant

Date 13/11/18	Scale 1 : 50 @ A3	Drawn by DC	Check by PN
Project No 27463	Drawing No A-P11-20	Revision B	

**BARTON
WILLMORE**

Planning • Master Planning & Urban Design • Architecture •
Landscape Planning & Design • Environmental Planning • Graphic
Communication • Public Engagement • Development Economics

bartonwillmore.co.uk



Offices at Birmingham Bristol Cambridge Cardiff Ebbw Vale Edinburgh
Glasgow Leeds London Manchester Newcastle Reading Southampton

VISUAL SCALE 1:50 @ A3