

radiators to be removed and replaced with underfloor heating (between joist) trays with insulation.



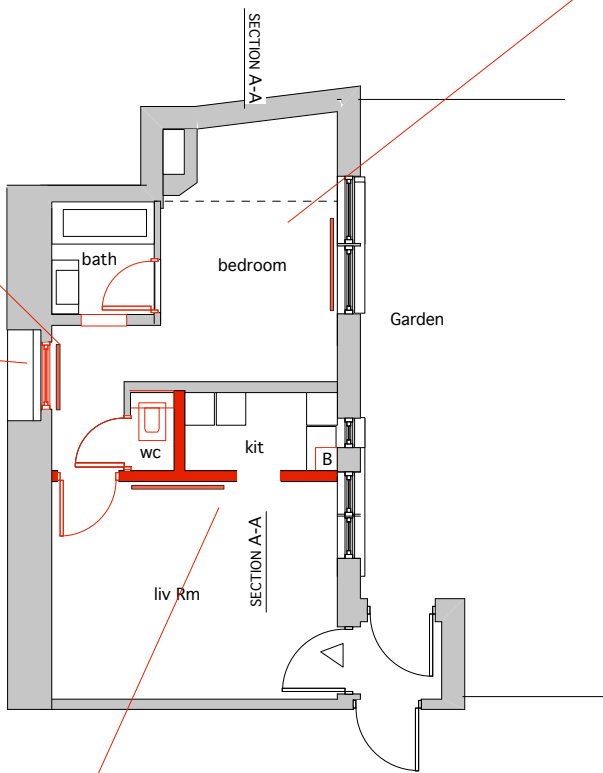
bulkhead in bedroom to remain in place and to be used to set the level of a suspended ceiling



suspended ceiling that obscures window aperture to be removed and replaced with one that is set higher and clears the window



window inserted in late 20C to cover coal shute and inner secondary window.
 - window to be removed leaving inner window in shute



Non structural kitchen partition (added during conversion to a flat) , to be removed .
 Note that it obscures the window.
 The door which is also contemporary with the added partition is also to be removed (along with the radiator)
 Like the rest of the flat, there are no surviving original architectrual mouldings.
 The WC is proposed to be relocated in the bathroom and the space used to improve the kitchen