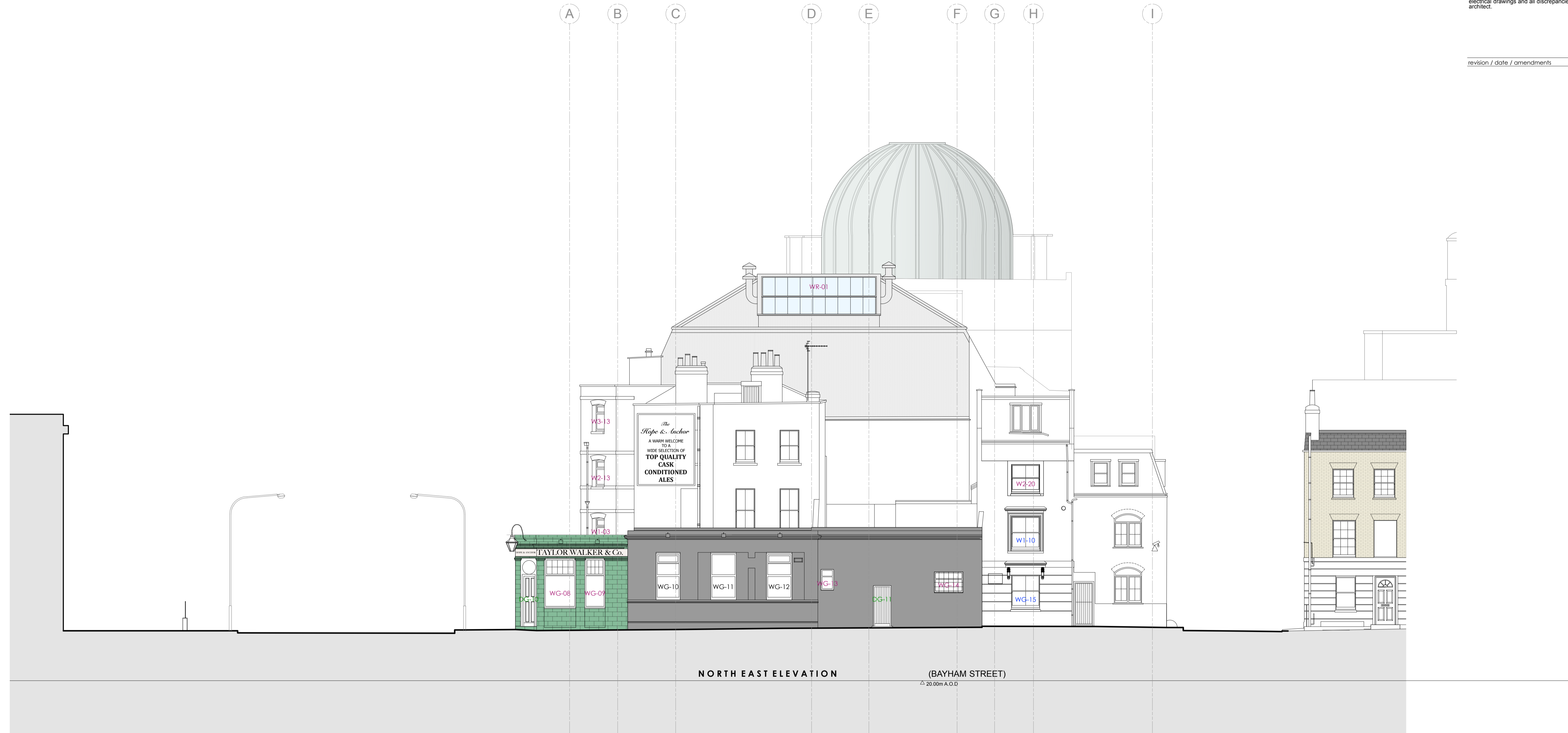


revision / date / amendments



07.09.17



STAGE 3

Archer Humphryes Architects

Basement
Central House
142 Central Street
London, United Kingdom
EC1V 8AR
T: +44 (0) 20 7251 8555

project title	KOKO + Hope & Anchor + Bayham Place Camden, London		
drawing title	scale	date	
Existing Bayham Street Elevation	1:100 @ A1	28.11.16	
drawing number	drawn	checked	
AHA/KKC/ EX /202	EH	DA	
	revision		
	-		