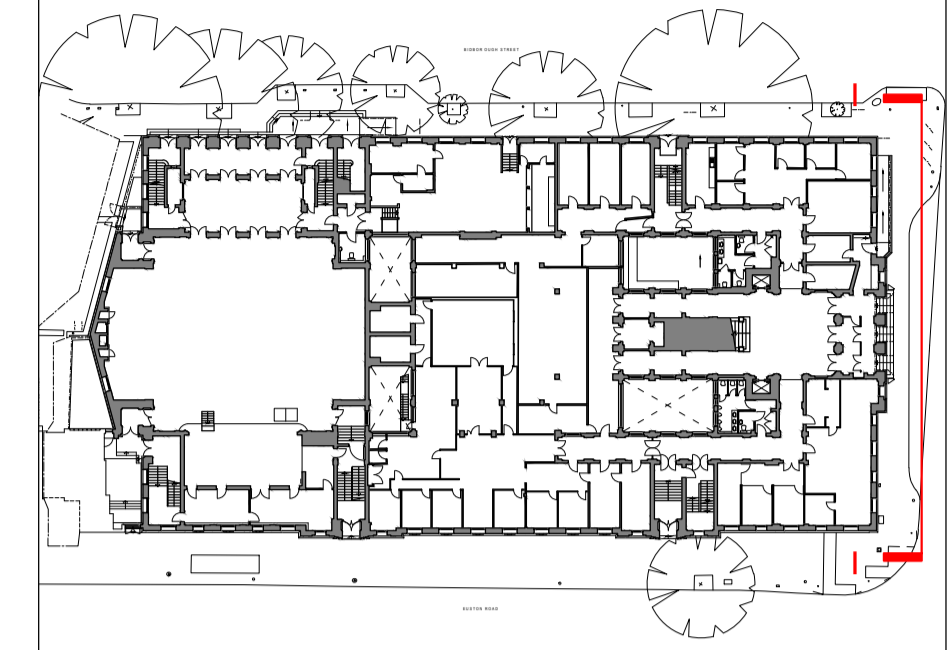


1. New openings created at low level in area of stone recess - detail and profile to match existing low-level window profiles on Euston Road and Bidborough Street.
2. Finishes to ramp surfaces removed and upstand taken down. Existing key clamp balustrade to be removed.
3. Non original draft lobby within entrance portico to be removed.
4. Existing lift motor room retained and reused as pump room - cladding replaced.
5. Bottom three courses of slate to be removed during improvement works to gutters; to be reinstated.

**Notes:**  
 Drawings are based on survey data and may not accurately represent what is physically present.  
 All dimensions are to be verified on site before proceeding with the work.  
 All dimensions are in millimeters unless noted otherwise.  
 Purcell shall be notified in writing of any discrepancies.

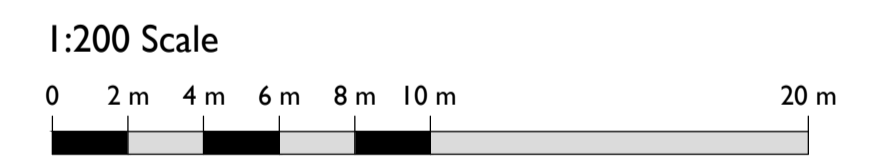


**Demolitions & Alterations Key**

Original fabric defined as that documented in Archive Drawings. Where date of fabric is unknown, it is assumed as original.

- Original Fabric: Section of Wall/Slab to be Demolished
- Original Fabric: Item to be Demolished
- Overhead - 300mm wide opening to ceiling for high level concealed cable distribution - make good after installation
- Overhead: Whole bay of vaulted ceiling to be removed for cabling distribution and reinstated
- Original Fabric: High level opening in wall for services distribution
- Floor trenches in slab for cable distribution
- Manhole: Opening in slab
- Non-Original Fabric: Section of Wall to be Demolished
- Non-Original Fabric: Item to be Demolished
- Window Number
- Door Number
- Annotation Item

Drawings to be read in conjunction with:  
 Internal Repairs & Builder's Works drawing series (93)000 for key spaces  
 Conservation Strategy Report CTH-PUR-MP-00-SP-A-00005



SS P00	17 Apr 2019	OB	NS
SS P01	07 Apr 2020	OB	NS

ISSUE	DATE	DRAWN	CHECKED	DESCRIPTION
<b>DRAWING TITLE</b>	GA PROPOSED DEMOLITIONS AND STRIP OUT JUDD STREET ELEVATION			
<b>DRAWING NO.</b>	CTH-PUR-MP-ZZ-DR-A-91100			
<b>REVISION</b>	P01			
<b>SIZE &amp; SCALE</b>	A1L 1:200			
<b>DRAWING STATUS</b>	Issued for Planning			

<b>CLIENT</b>	Lendlease	
<b>PROJECT</b>	Camden Town Hall	
<b>JOB NUMBER</b>	238664	

