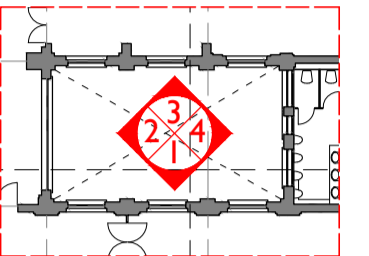
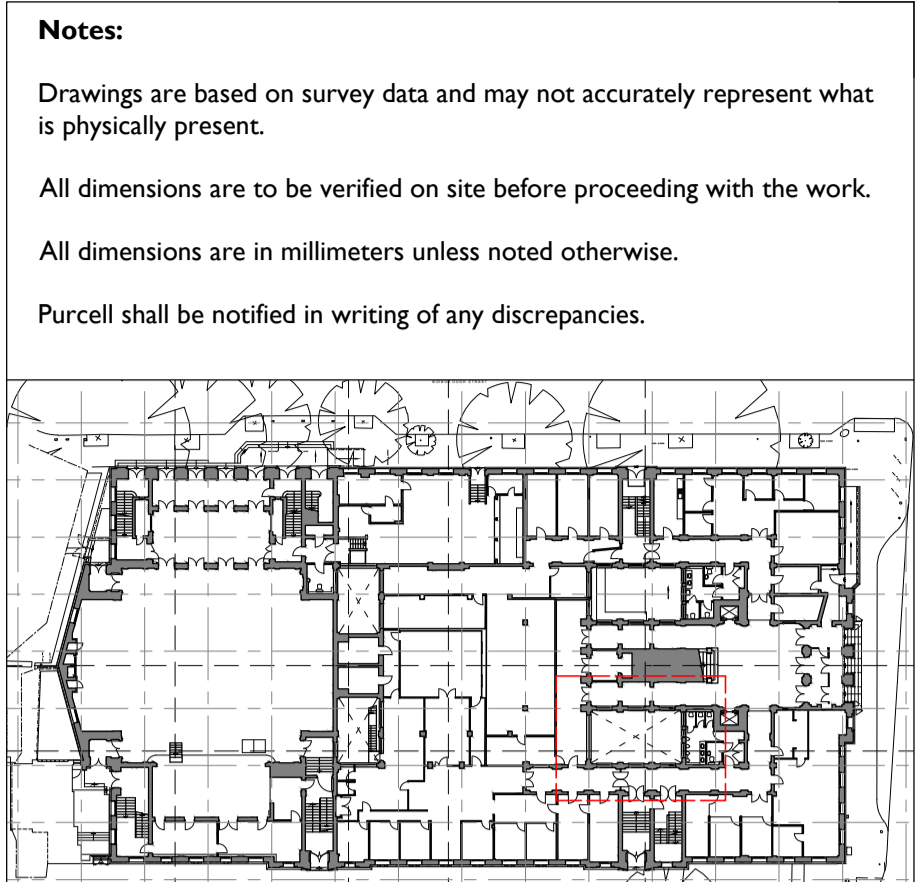


- Existing ramp to be removed
- Non original door removed
- Existing services and plant stripped out of lightwells.
- Existing drainage pipework to be stripped out. Sections of pipework assumed to be original.
- Original doors onto lightwells removed to allow for replacement with automatic opening replacement for smoke ventilation.
- Section of existing pitched roof removed to allow for connection of new rooflight.
- Overhanging section of slate roof pitch to be removed to allow for connection of new rooflight.
- Existing pitched roof to 1940s extension removed to allow for new flat roof.
- Roof finishes to section of existing pitched roof removed to allow for thermal upgrades.
- Existing windows to be retained and restored

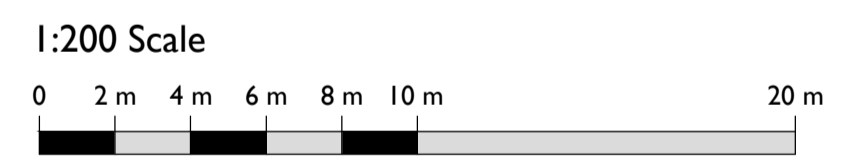


Demolitions & Alterations Key

Original fabric defined as that documented in Archive Drawings. Where date of fabric is unknown, it is assumed as original.

- Original Fabric: Section of Wall/Slab to be Demolished
- Original Fabric: Item to be Demolished
- Overhead - 300mm wide opening to ceiling for high level concealed cable distribution - make good after installation
- Overhead: Whole bay of vaulted ceiling to be removed for cabling distribution and reinstated
- Original Fabric: High level opening in wall for services distribution
- Floor trenches in slab for cable distribution
- Manhole: Opening in slab
- Non-Original Fabric: Section of Wall to be Demolished
- Non-Original Fabric: Item to be Demolished
- Window Number
- Door Number
- Annotation Item

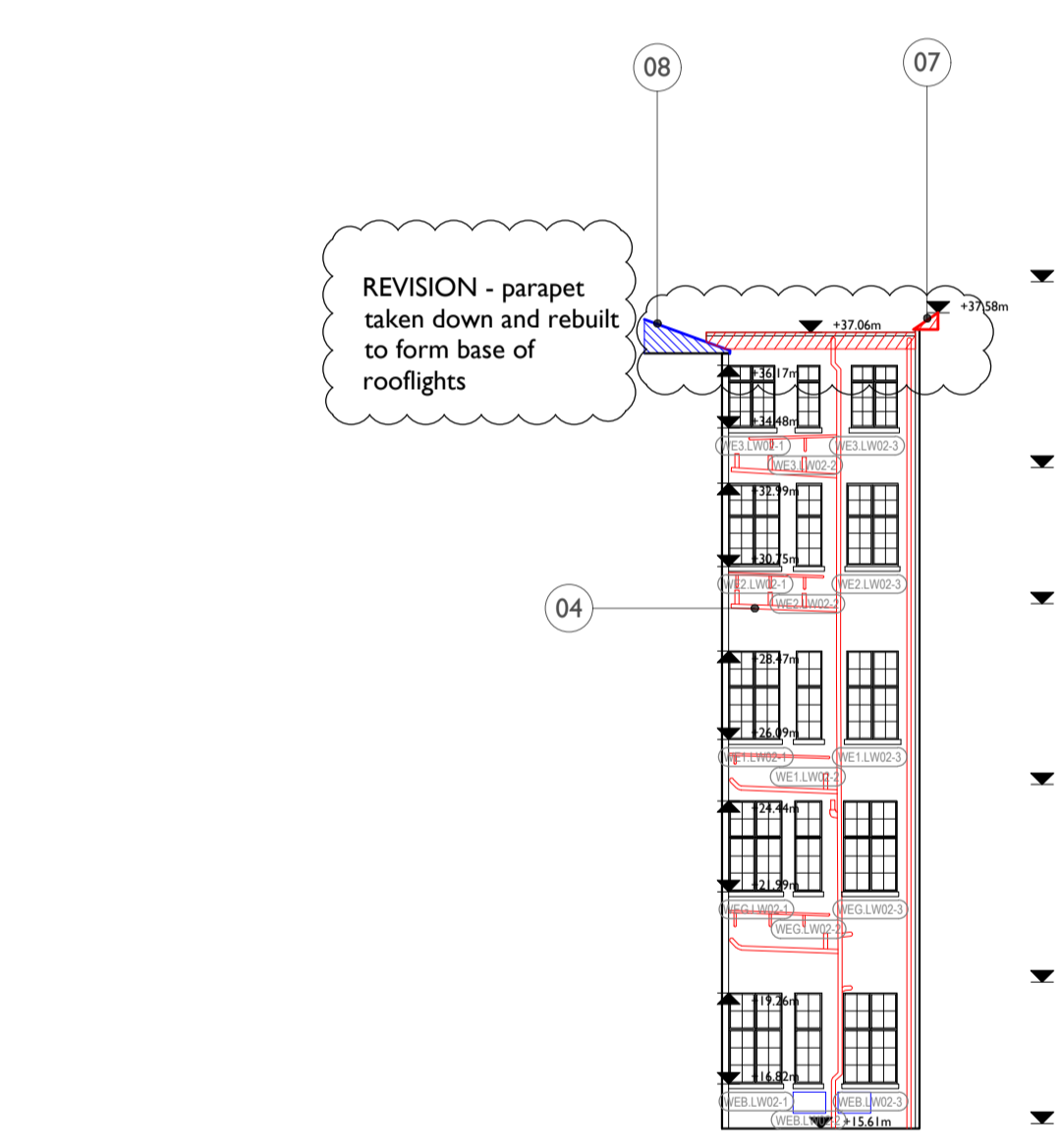
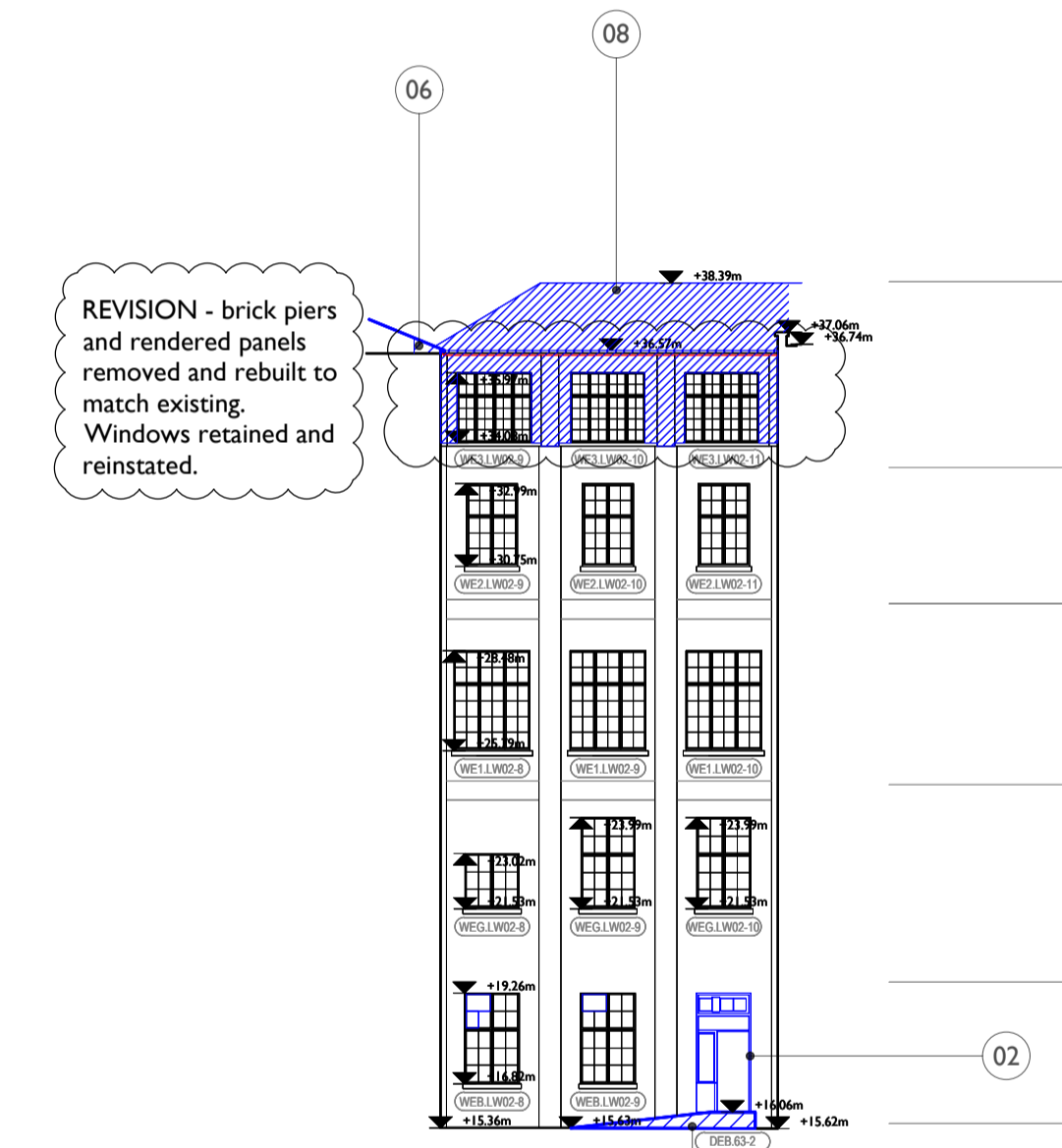
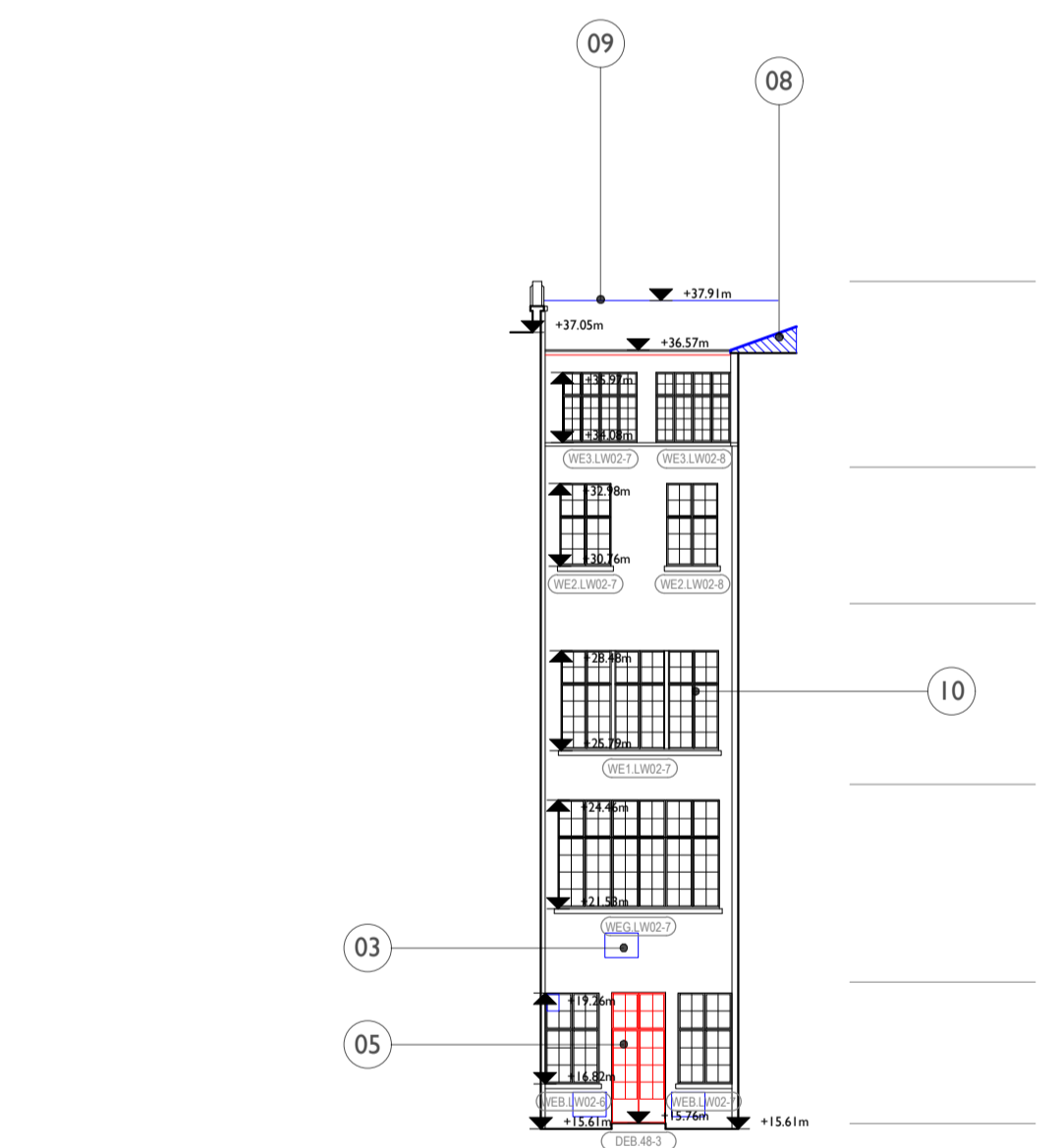
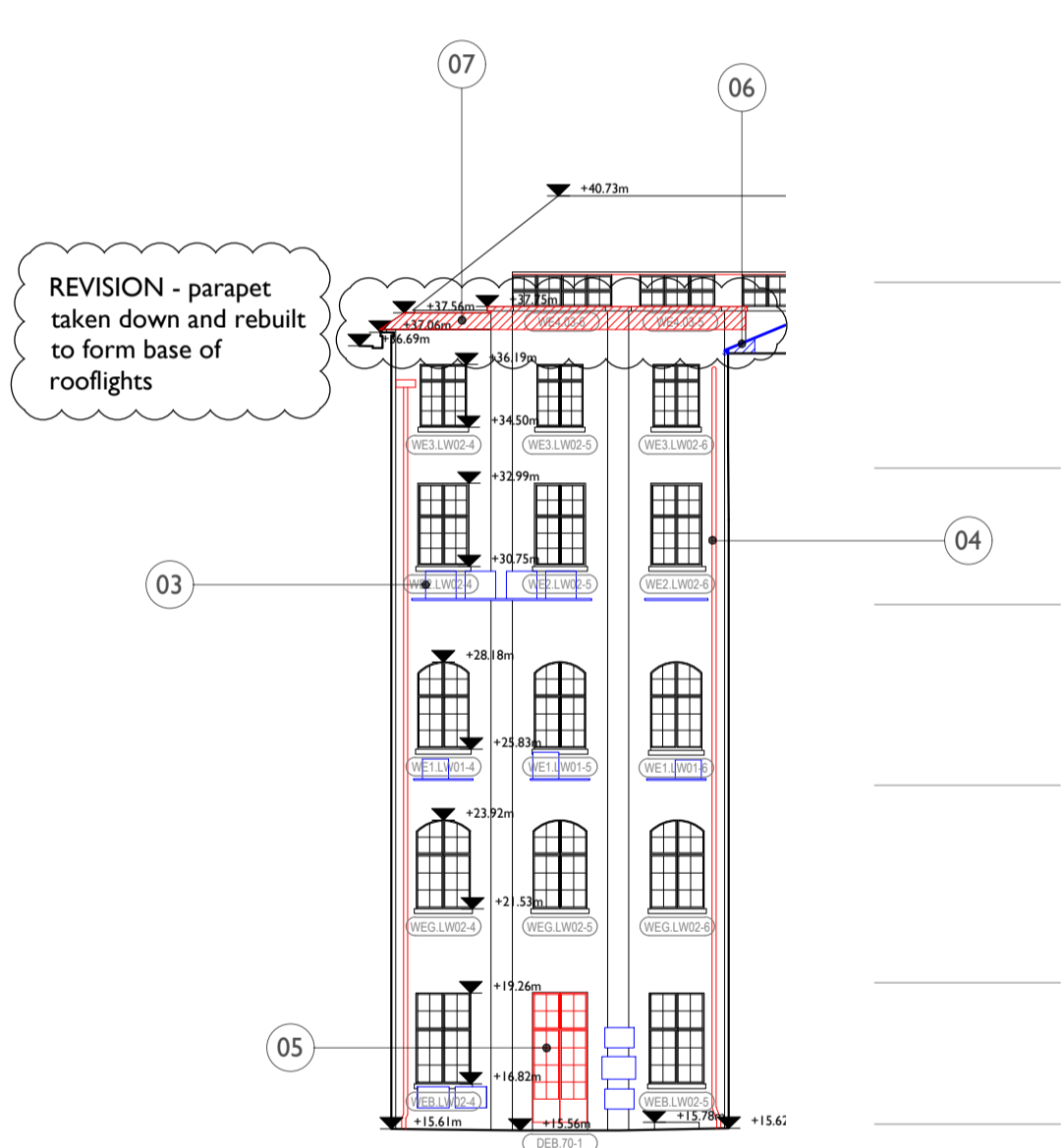
Drawings to be read in conjunction with:
 Internal Repairs & Builder's Works drawing series (93)000 for key spaces
 Conservation Strategy Report CTH-PUR-MP-00-SP-A-00005



S5 P00	17 Apr 2019	OB	NS
S5 P01	07 Apr 2020	OB	NS

ISSUE	DATE	DRAWN	CHECKED	DESCRIPTION
DRAWING TITLE	GA PROPOSED DEMOLITIONS AND STRIP OUT SOUTH-WEST LW.02 - ELEVATIONS			
DRAWING NO.	CTH-PUR-MP-ZZ-DR-A-91105			
REVISION	P01			
SIZE & SCALE	A1L 1:200			
DRAWING STATUS	Issued for Planning			

CLIENT	Lendlease	
PROJECT	Camden Town Hall	
JOB NUMBER	238664	



- ▼ PFL + 38.42m **Fourth Level**
- ▼ PFL + 33.42m **Third Level**
- ▼ PFL + 29.75m **Second Level**
- ▼ PFL + 24.80m **First Level**
- ▼ PFL + 19.56m **Ground Level**
- ▼ PFL + 15.75m **Basement Level**

1 LIGHTWELL 2 - NORTH ELEVATION
91105 1:200 @ A1

2 LIGHTWELL 2 - EAST ELEVATION
91105 1:200 @ A1

3 LIGHTWELL 2 - SOUTH ELEVATION
91105 1:200 @ A1

4 LIGHTWELL 2 - WEST ELEVATION
91105 1:200 @ A1