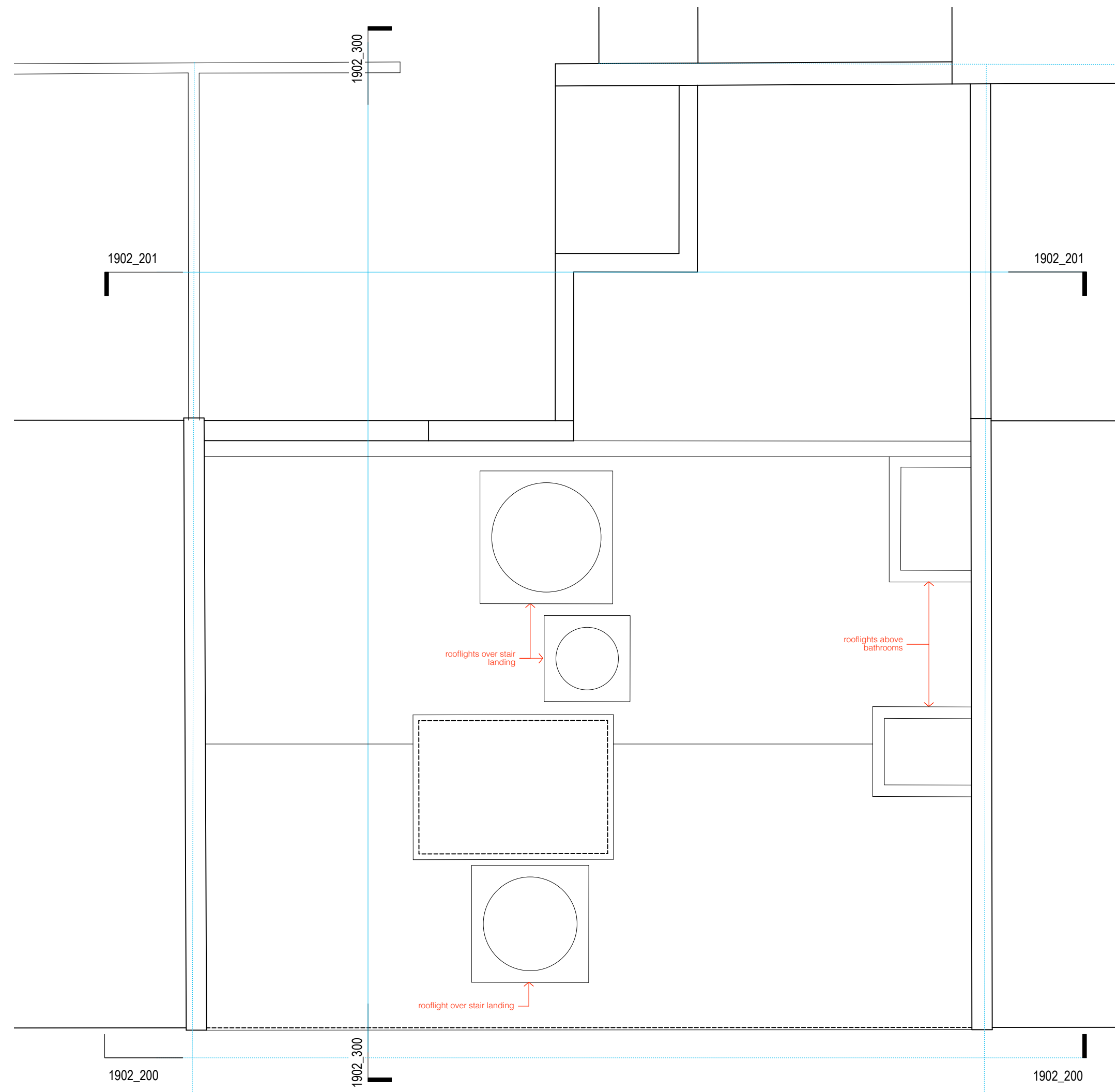


Amendments to previous planning application (2017/6307/P)

1. Reconfiguration of rooflight positions



- Building Regulation - M4(2): General
- 2.22: Corridor widths  $\approx$  900mm
  - 2.22: Door opening widths as Table 2.1
  - 2.23: Stair widths 850mm
  - 2.24: Step free access to habitable rooms
  - 2.24: Window glazing starts at 850mm or lower
  - 2.25: 750mm clear access from door to window in bedroom
  - 2.25: 750mm width to side of beds as required in bedrooms
  - 2.29: Bathroom access as per diagrams 1.3 & 2.6

# FOR PLANNING

client	Debra Tammer + Gidon Katz
scale	1:50 at A3
project	106 King Henry's Road
drawing title	Proposed Roof Plan
drawing no	1902_103
rev	