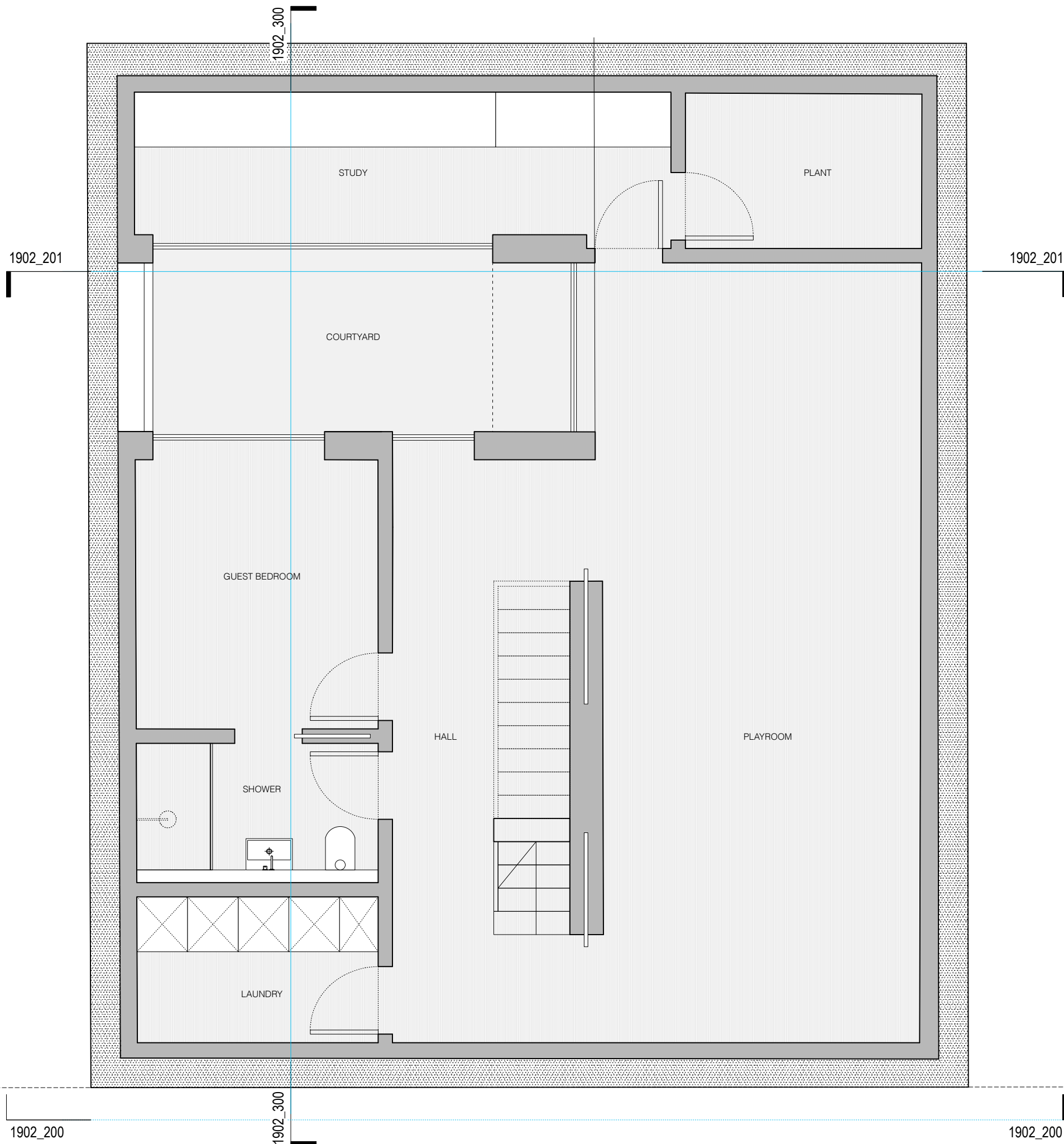


Amendments to previous planning application (2017/6307/P)

- 1. Minor reconfiguration to internal layout



Building Regulation - M4(2): General

- 2.22: Corridor widths \approx 900mm
- 2.22: Door opening widths as Table 2.1
- 2.23: Stair widths 850mm
- 2.24: Step free access to habitable rooms
- 2.24: Window glazing starts at 850mm or lower
- 2.25: 750mm clear access from door to window in bedroom
- 2.25: 750mm width to side of beds as required in bedrooms
- 2.29: Bathroom access as per diagrams 1.3 & 2.6

FOR PLANNING

client	Debra Tammer + Gidon Katz
scale	1:50 at A3
project	106 King Henry's Road
drawing title	Proposed Basement Plan
drawing no	1902_100
rev	

STUDIOCARVER