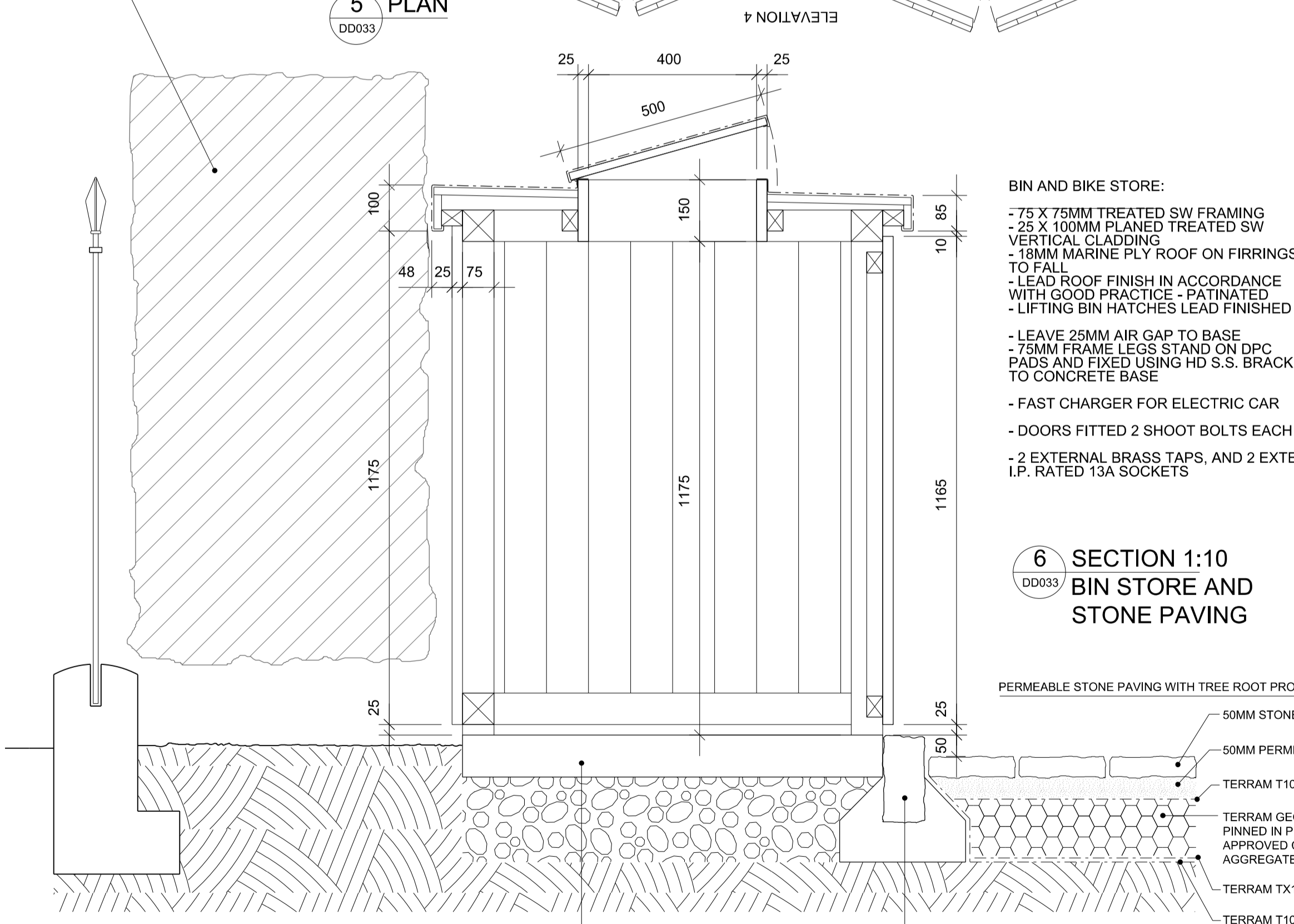
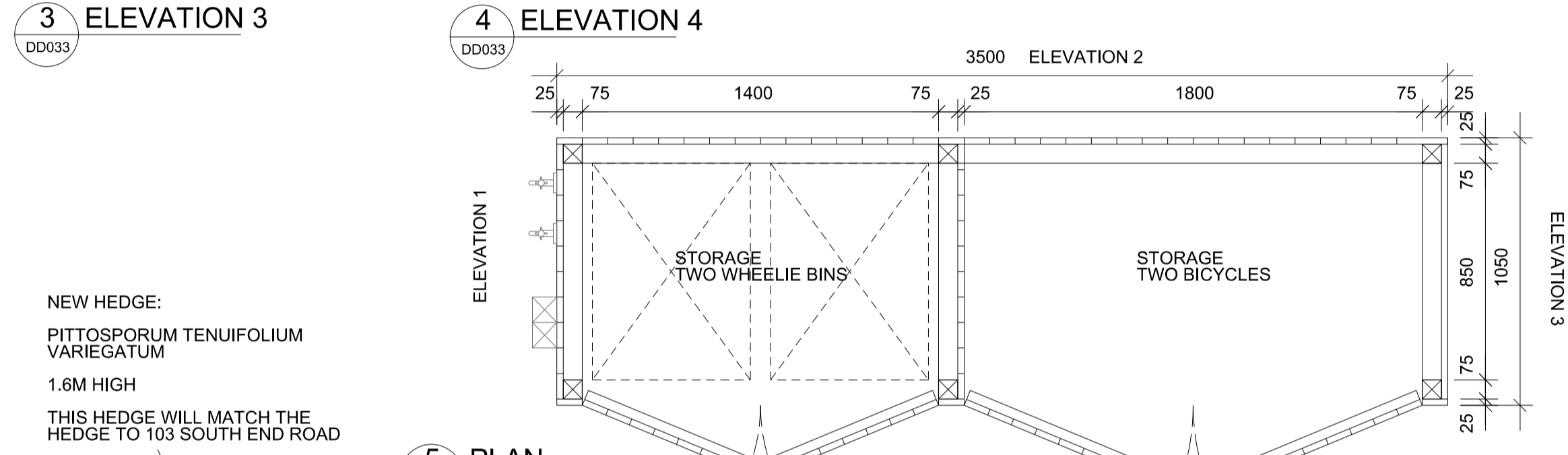
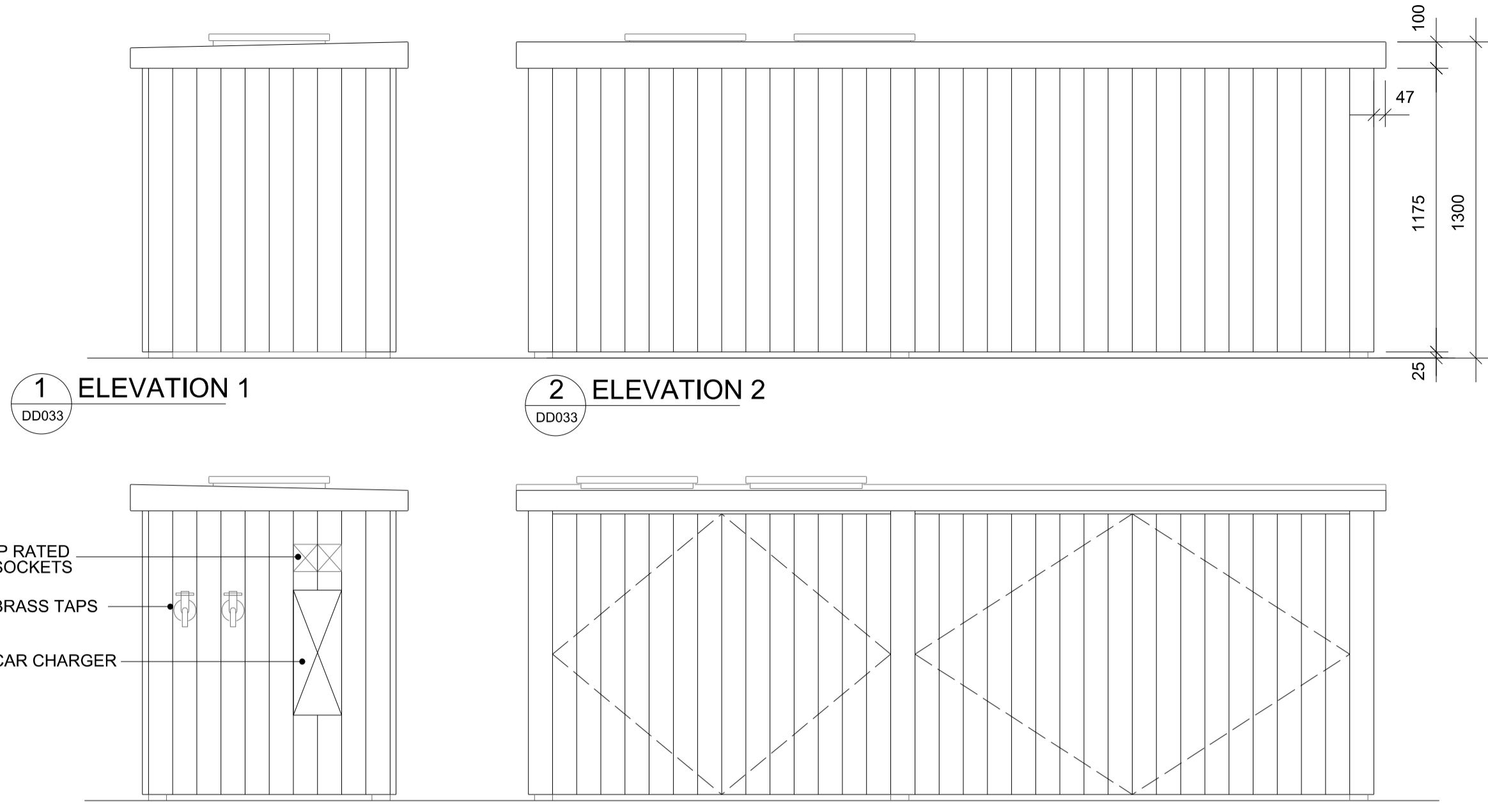


BIN AND BICYCLE STORE ELEVATIONS



BIN AND BIKE STORE:

- 75 X 75MM TREATED SW FRAMING
- 25 X 100MM PLANED TREATED SW VERTICAL CLADDING
- 18MM MARINE PLY ROOF ON FIRRINGS TO FALL
- LEAD ROOF FINISH IN ACCORDANCE WITH GOOD PRACTICE - PATINATED
- LIFTING BIN HATCHES LEAD FINISHED
- LEAVE 25MM AIR GAP TO BASE
- 75MM FRAME LEGS STAND ON DPC PADS AND FIXED USING HD S.S. BRACKETS TO CONCRETE BASE
- FAST CHARGER FOR ELECTRIC CAR
- DOORS FITTED 2 SHOOT BOLTS EACH
- 2 EXTERNAL BRASS TAPS, AND 2 EXTERNAL I.P. RATED 13A SOCKETS

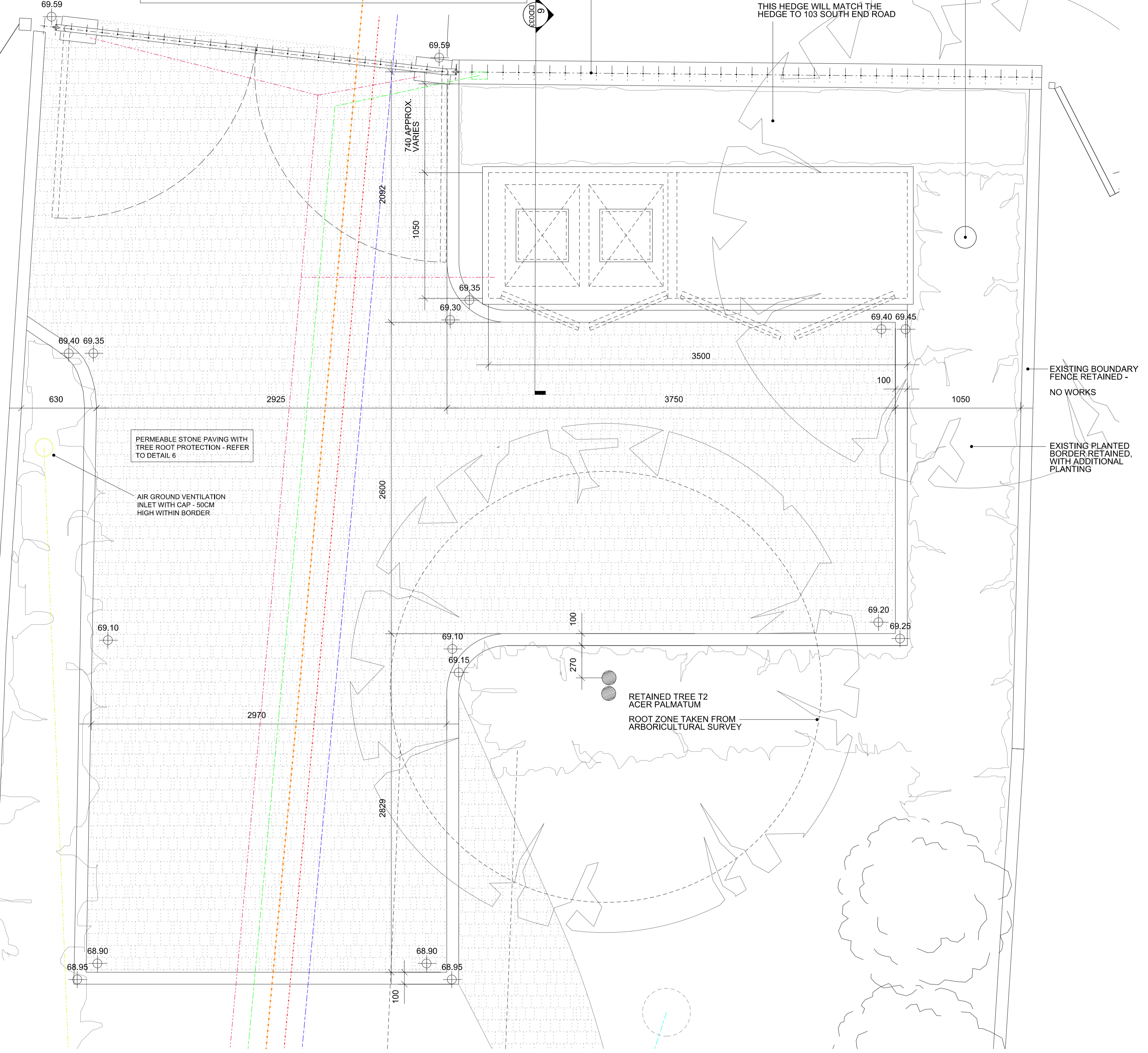
PERMEABLE STONE PAVING WITH TREE ROOT PROTECTION:

- 50MM STONE PAVING
- 50MM PERMEABLE BEDDING
- TERRAM T1000 GEOTEXTILE
- TERRAM GEOCELL 150MM PINNED IN PLACE - WITH APPROVED CLEAN GRADED AGGREGATE FILL
- TERRAM TX160 GEOGRID
- TERRAM T1000 GEOTEXTILE

100MM CONCRETE SLAB TO NOMINAL FALL, WITH MESH REINFORCEMENT - TO ENG SPEC.
STONE EDGING SET MASS CONCRETE CAREFULLY HAND DUG

INCOMING SERVICES:

- WATER
- ELECTRICITY
- GAS
- ELECTRICAL SUPPLIES TO GATES, POWER SOCKETS, CAR CHARGER
- CABLE TO ENTRYPHONE SYSTEM
- ALL BURIED SERVICES TO BE RUN IN SUITABLE CONDUIT AT APPROPRIATE DEPTHS
- BURIED PIPEWORK ASSOCIATED WITH GSHP INSTALLATION
- AIR GROUND VENTILATION DUCT



NEW RAILINGS ON RENDERED CONCRETE BASE - REFER DRAWING DD-032

NEW HEDGE: PITTOSPORUM TENUIFOLIUM VARIEGATUM 1.6M HIGH THIS HEDGE WILL MATCH THE HEDGE TO 103 SOUTH END ROAD

NEW SPECIMEN SEMI-MATURE TREE:

EXISTING BOUNDARY FENCE RETAINED - NO WORKS

EXISTING PLANTED BORDER RETAINED, WITH ADDITIONAL PLANTING

RETAINED TREE T2 ACER PALMATUM
ROOT ZONE TAKEN FROM ARBORICULTURAL SURVEY

DLA
DAVID LONG ARCHITECTS LTD
Architecture and Development Management
Fordhams, Little Green, Chelmsford, Essex, CM3 1BU
Tel +44(0) 208 533 5555 / 07478 722554
e-mail dlong@dlatd.com
www.dlatd.com

NOTES:

- DO NOT SCALE
- ALL DIMENSIONS ARE IN METERS OR MILLIMETERS UNLESS NOTED OTHERWISE
- ALL DISCREPANCIES TO BE NOTIFIED TO THE ARCHITECT IMMEDIATELY
- ALL CONSTRUCTION WORK TO COMPLY WITH LOCAL AUTHORITY CODES AND BUILDING REGULATIONS, BRITISH STANDARDS AND OTHER REGULATIONS APPLICABLE TO BOTH DESIGN AND EXECUTION OF THE WORK.

CLIENT:
Elizabeth Birch

STRUCTURAL ENGINEERS:

BUILDING SERVICE ENGINEERS:

QUANTITY SURVEYOR:

PLANNING SUPERVISOR:

ISSUE RECORD

Rev.	Date	Comment	by	ch
-	02.04.20	FIRST ISSUE	DL	

PROJECT:
99 South End Road
LONDON NW3 2RJ

STATUS:
DETAIL DESIGN

TITLE:
BIN AND BICYCLE STORAGE
PERMEABLE STONE PAVING

SCALE: 1:20
JOB NO: 177

DRAWING No: DD-033
REVISION: -
ORIGINAL PAPER SIZE: A1