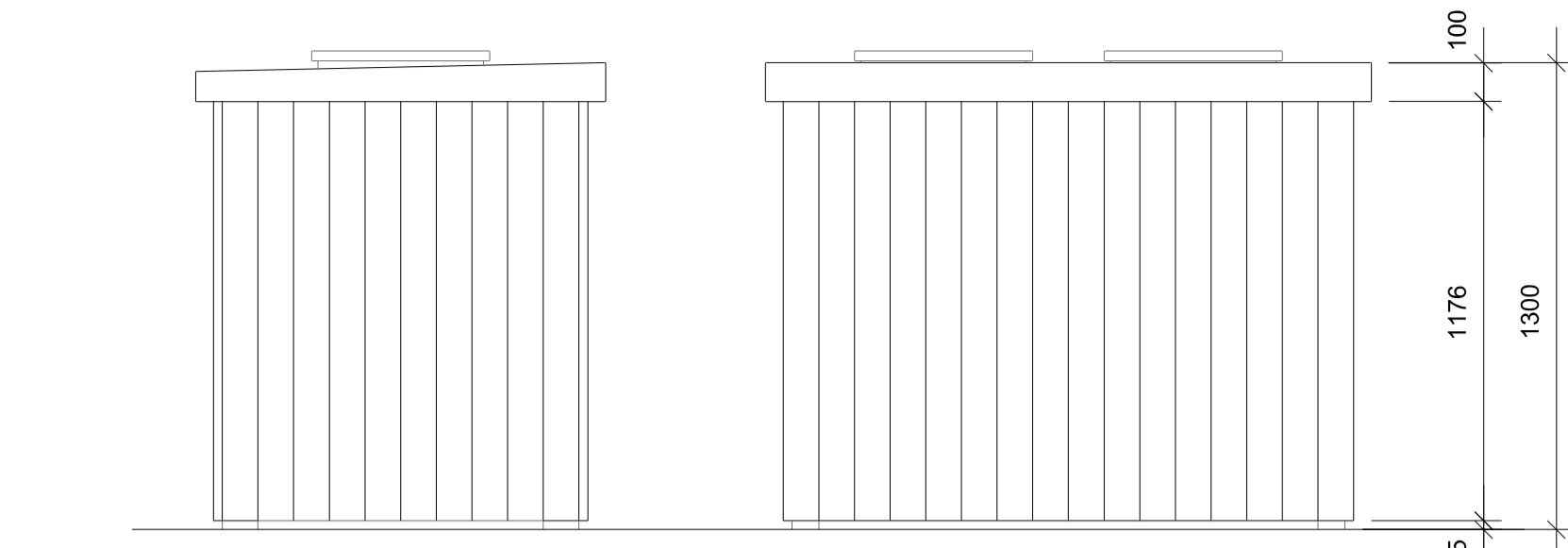
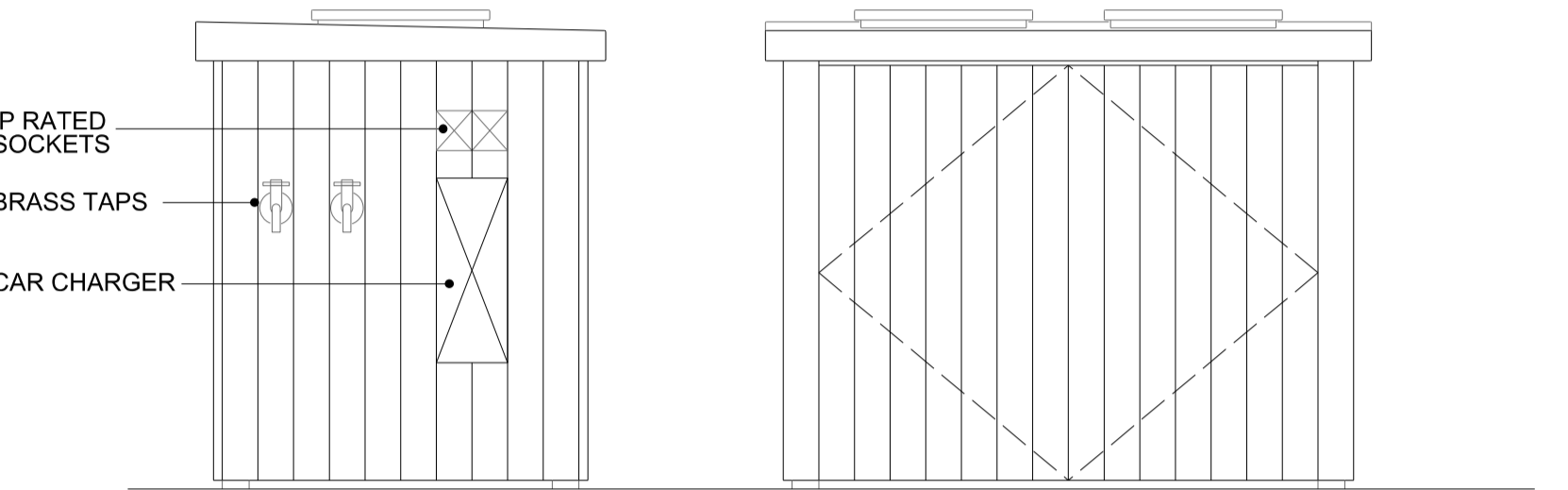


**BIN STORE ELEVATIONS**



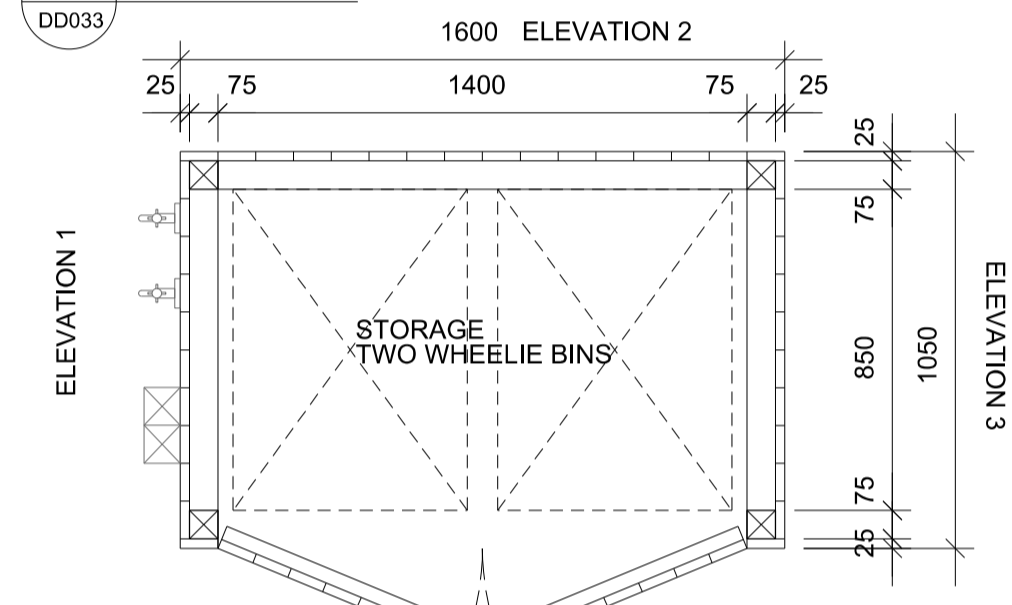
**1 ELEVATION 1**

**2 ELEVATION 2**



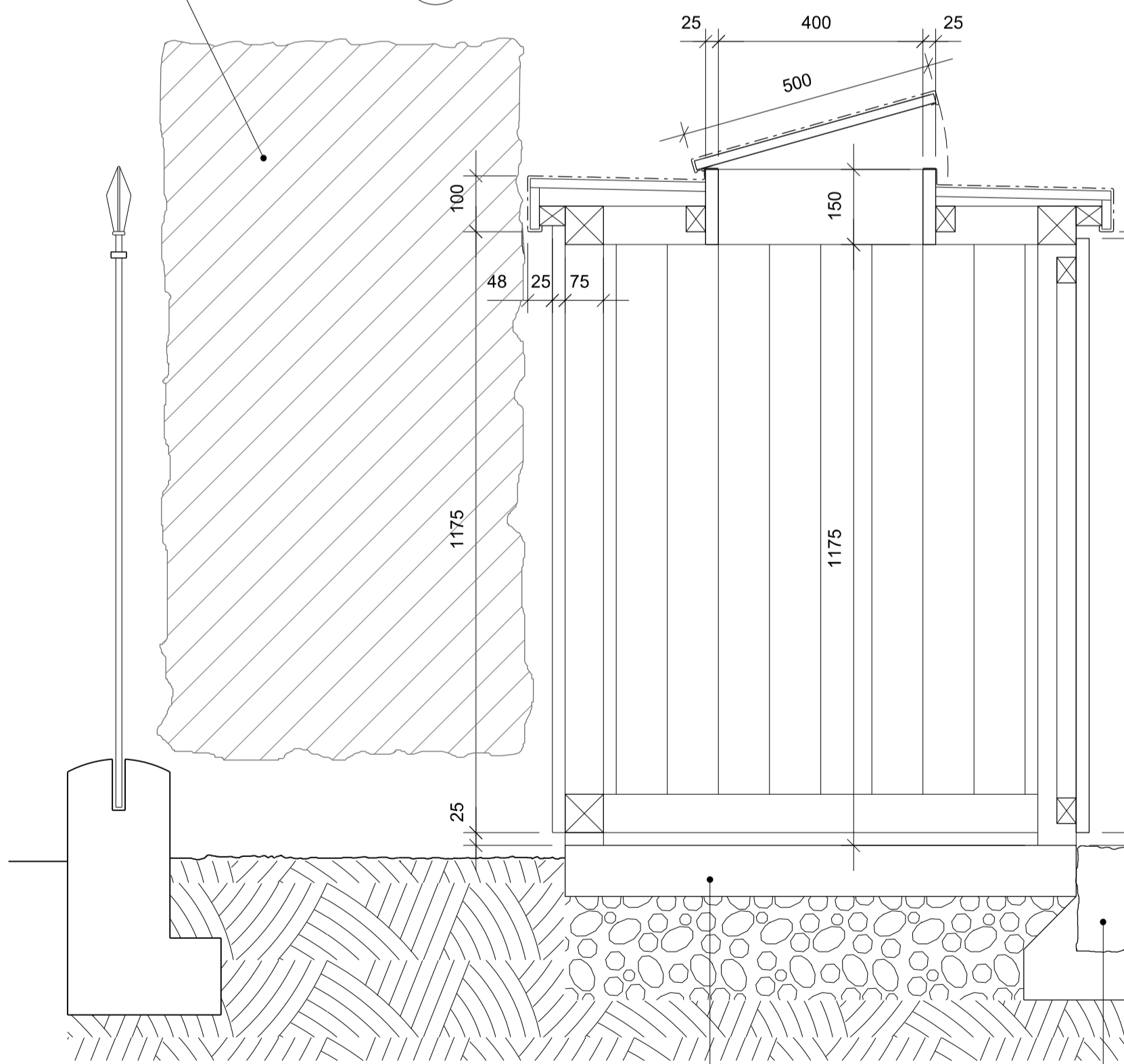
**3 ELEVATION 3**

**4 ELEVATION 4**



**5 PLAN**

NEW HEDGE:  
PITTIOSPORUM TENUIFOLIUM  
VARIEGATUM  
1.6M HIGH  
THIS HEDGE WILL MATCH THE  
HEDGE TO 103 SOUTH END ROAD



**BIN STORE:**

- 75 X 75MM TREATED SW FRAMING
- 25 X 100MM PLANED TREATED SW VERTICAL CLADDING
- 18MM MARINE PLY ROOF ON FIRRINGS TO FALL
- LEAD ROOF FINISH IN ACCORDANCE WITH GOOD PRACTICE - PATINATED
- LIFTING BIN HATCHES LEAD FINISHED
- LEAVE 25MM AIR GAP TO BASE
- 75MM FRAME LEGS STAND ON DPC PADS AND FIXED USING HD S.S. BRACKETS TO CONCRETE BASE
- FAST CHARGER FOR ELECTRIC CAR
- DOORS FITTED 2 SHOOT BOLTS EACH
- 2 EXTERNAL BRASS TAPS, AND 2 EXTERNAL I.P. RATED 13A SOCKETS

**6 SECTION 1:10 BIN STORE AND STONE PAVING**

- PERMEABLE STONE PAVING WITH TREE ROOT PROTECTION:
- 50MM STONE PAVING
  - 50MM PERMEABLE BEDDING
  - TERRAM T1000 GEOTEXTILE
  - TERRAM GEOCELL 150MM PINNED IN PLACE - WITH APPROVED CLEAN GRADED AGGREGATE FILL
  - TERRAM TX100 GEOGRID
  - TERRAM T1000 GEOTEXTILE

100MM CONCRETE SLAB TO NOMINAL FALL WITH MESH REINFORCEMENT - TO ENG SPEC.

STONE EDGING SET MASS CONCRETE CAREFULLY HAND DUG

**INCOMING SERVICES:**

- REGULATORY ONLY - CONSTRUCTORS TO ESTABLISH PRECISE LOCATIONS
- WATER
- ELECTRICITY
- GAS

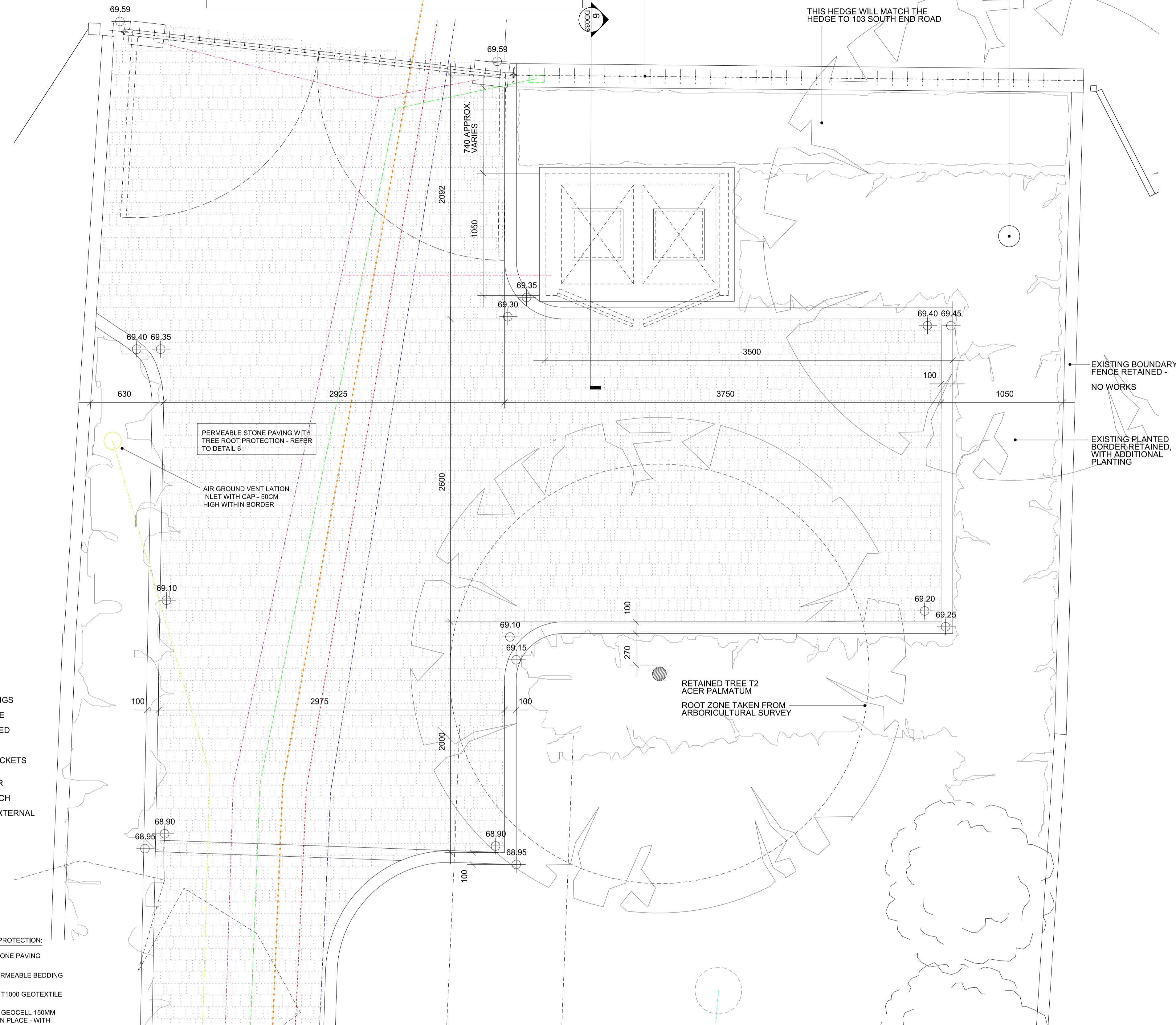
**ALL BURIED SERVICES TO BE RUN IN SUITABLE CONDUIT AT APPROPRIATE DEPTHS**

- ELECTRICAL SUPPLIES TO GATES, POWER SOCKETS, CAR CHARGER
- BURIED PIPEWORK ASSOCIATED WITH GSHP INSTALLATION
- CABLE TO ENTRYPHONE SYSTEM
- AIR GROUND VENTILATION DUCT

NEW RAILINGS ON RENDERED CONCRETE BASE - REFER DRAWING DD-032

NEW HEDGE:  
PITTIOSPORUM TENUIFOLIUM  
VARIEGATUM  
1.6M HIGH  
THIS HEDGE WILL MATCH THE HEDGE TO 103 SOUTH END ROAD

NEW SPECIMEN SEMI-MATURE TREE:



PERMEABLE STONE PAVING WITH TREE ROOT PROTECTION - REFER TO DETAIL 6

AIR GROUND VENTILATION INLET WITH CAP - 50CM HIGH WITHIN BORDER

RETAINED TREE T2 ACER PALMATUM  
ROOT ZONE TAKEN FROM ARBORICULTURAL SURVEY

EXISTING BOUNDARY FENCE RETAINED - NO WORKS

EXISTING PLANTED BORDER RETAINED, WITH ADDITIONAL PLANTING

**DLA**  
DAVID LONG ARCHITECTS LTD  
Architecture and Development Management  
Fordhams, Little Green, Chelmsford, Essex, CM3 1BU  
Tel +44(0) 208 533 5555 / 07478 722554  
e-mail dlong@dlatd.com  
www.dlatd.com

**NOTES:**

- DO NOT SCALE
- ALL DIMENSIONS ARE IN METERS OR MILLIMETERS UNLESS NOTED OTHERWISE
- ALL DISCREPANCIES TO BE NOTIFIED TO THE ARCHITECT IMMEDIATELY
- ALL CONSTRUCTION WORK TO COMPLY WITH LOCAL AUTHORITY CODES AND BUILDING REGULATIONS, BRITISH STANDARDS AND OTHER REGULATIONS APPLICABLE TO BOTH DESIGN AND EXECUTION OF THE WORK.

**CLIENT:**  
Elizabeth Birch

**STRUCTURAL ENGINEERS:**

**BUILDING SERVICE ENGINEERS:**

**QUANTITY SURVEYOR:**

**PLANNING SUPERVISOR:**

**ISSUE RECORD**

Rev.	Date	Comment	by	ch
-	02.04.20	FIRST ISSUE	DL	
A	05.04.20	ENTRANCE PATH AND BINSTORE UPDATED	DL	

**PROJECT:**  
99 South End Road  
LONDON NW3 2RJ

**STATUS:**  
**DETAIL DESIGN**

**TITLE:**  
BIN STORAGE  
PERMEABLE STONE PAVING

SCALE:	DRAWING No:	REVISION:	ORIGINAL PAPER SIZE:
1:20	DD-033	A	A1
JOB NO:	177		