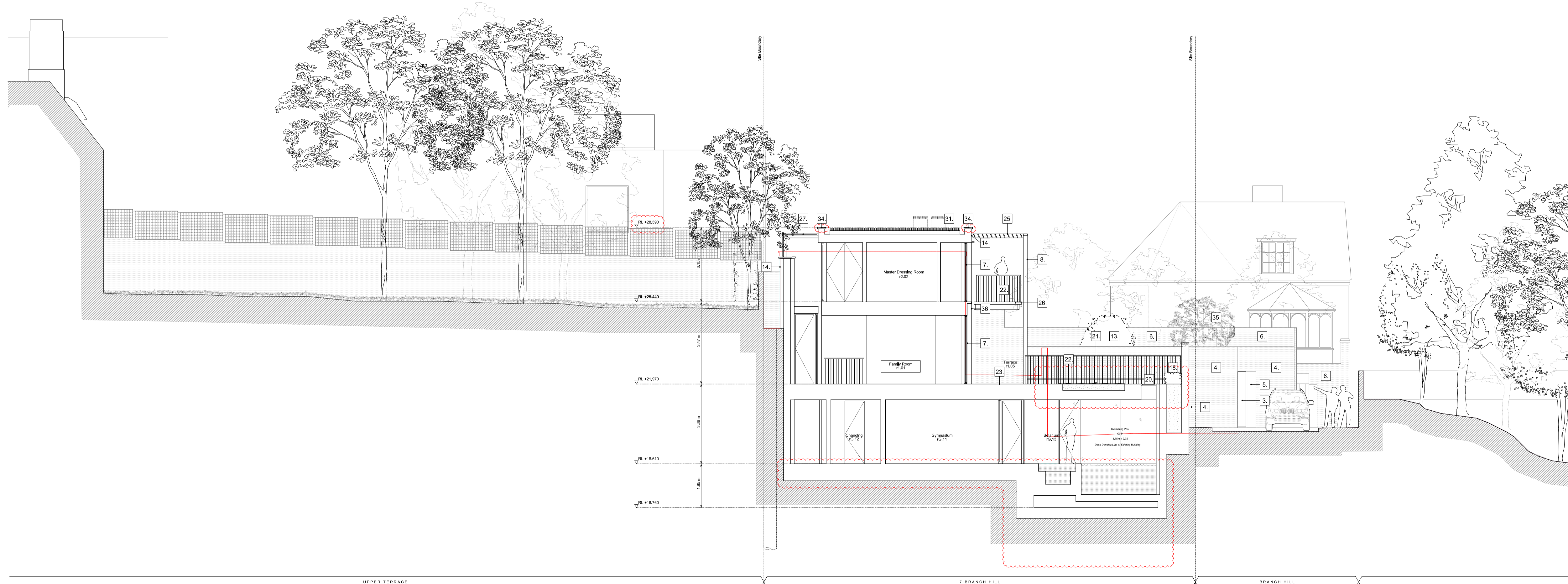


Existing Section AA



Proposed Section AA

- Legend: Existing Building**
- Existing London Stock brick wall
 - Existing brick paving
 - Existing steel-framed shade structure
 - Existing timber lattice atop London Stock brick garden wall
 - Existing garage door
 - Existing sliding vehicle gate to Branch Hill
 - Existing aluminium-framed glass sliding doors
 - Existing razor wire atop garden wall
 - Existing upstand of aluminium-framed rooflight

- Key:**
- Existing structure / earth
 - New structure
 - Outline of existing house

- Legend, Proposed Building**
- New 'Bronze' (Electroplated Aluminium) front door
 - New 'Bronze' (Electroplated Aluminium) fixed panels
 - New 'Bronze' (Electroplated Aluminium) sliding gate
 - New brickwork retaining wall in stock brickwork re-claimed from demolition
 - 'Bronze' (Electroplated Aluminium) reveals to new opening in garden wall.
 - Existing London stock brickwork wall retained
 - 'Bronze' (Electroplated Aluminium) framed double-glazed sliding door system
 - 'Bronze' (Electroplated Aluminium) frame. Refer drawing P_09
 - Flush, floor-mounted 'Bronze' (Electroplated Aluminium) grilles to ventilate basement environment (below)
 - Air-source heat pump enclosure. Refer to noise specialists documentation
 - New vehicular crossover: Brick paving to match existing
 - New Granite Selt paving to drive
 - Mature specimen Ash in bespoke, raised, cast-stone planter. Refer to P_06
 - 'Linear' brick external wall, stagger bond
 - Raised curb in 'Linear' brickwork
 - Yew hedging. Refer to P_06
 - 'Bronze' (Electroplated Aluminium) double-glazed fixed window system
 - Deep planting zone (designated by green hatch). Refer to P_06
 - Double-glazed glass walkway to ground floor
 - Flush, double-glazed fixed walk-on rooflight
 - Lawn. Refer to P_06
 - 'Bronze' (anodised aluminium) steel-framed, lightweight balustrade
 - Yorkstone paving
 - Yorkstone coping to retaining wall
 - Pre-fabricated 'Bronze' (Electroplated Aluminium) brise soleil
 - Balcony: Yorkstone paved, 'Bronze' (Electroplated Aluminium) fascia
 - 'Bronze' (Electroplated Aluminium) portal frame with flush, fixed, double-glazed, obscured, sand blasted glass mtl between frame
 - 'Bronze' (Electroplated Aluminium) chimney flue
 - Lift and counter weight, LRT overrun formed in 'linear' brick, with linear brick lid
 - Fixed, double-glazed flush rooflight with obscured sand blasted glass
 - Fixed, double-glazed flush rooflight with obscured sand blasted glass
 - Sedum roof, refer to P_06
 - Car lift
 - Car turn-table within basement
 - Polyester powder-coated coping
 - Mature specimen Copper Beech within deep planting zone. Refer to P_06
 - Anodised aluminium feature spandrel panel
 - 'Bronze' (Electroplated Aluminium) framed double-glazed 600mm window system
 - Mature specimen Birch, within deep planting zone. Refer to P_06
 - Operable, double-glazed flush rooflight
 - Proposed timber lattice atop London Stock brick garden wall
 - Glazed access hatch
 - Fixed, double-glazed flush rooflight with obscured privacy fins below



- Rev D 28/02/2020 Minor Material Amendment Application Revisions bubbled
- Rev C 02/02/2018 Minor Material Amendment Application Revisions bubbled
- Rev B 17/10/2013 Issued for Planning Revisions bubbled
- Rev A 07/06/2013 Issued for Planning

PLANNING ISSUE

Project No. **12021**

Client **Cheryl Plaza**

Date **June 2013**

Scale **1:50@A00, 1:100@A1**

Project **Judges Lodge, Branch Hill**

Drawing Title: **Existing & Proposed Section AA**

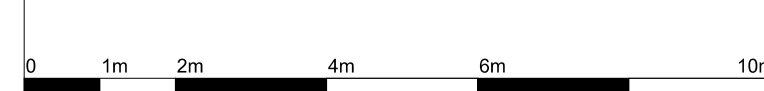
Drawing No. **P_14** Rev. **D**

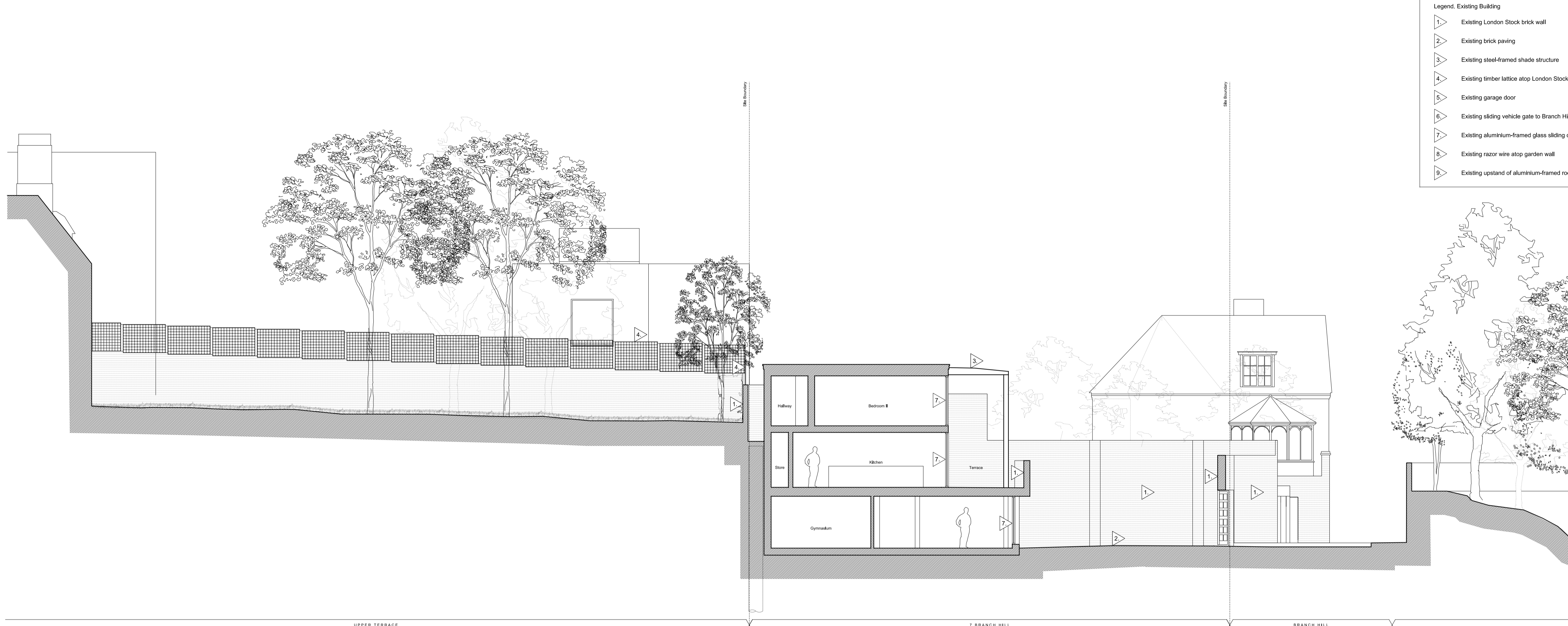
Drawn **LH** Approved **MW** Signed

Marek Wojciechowski Architects

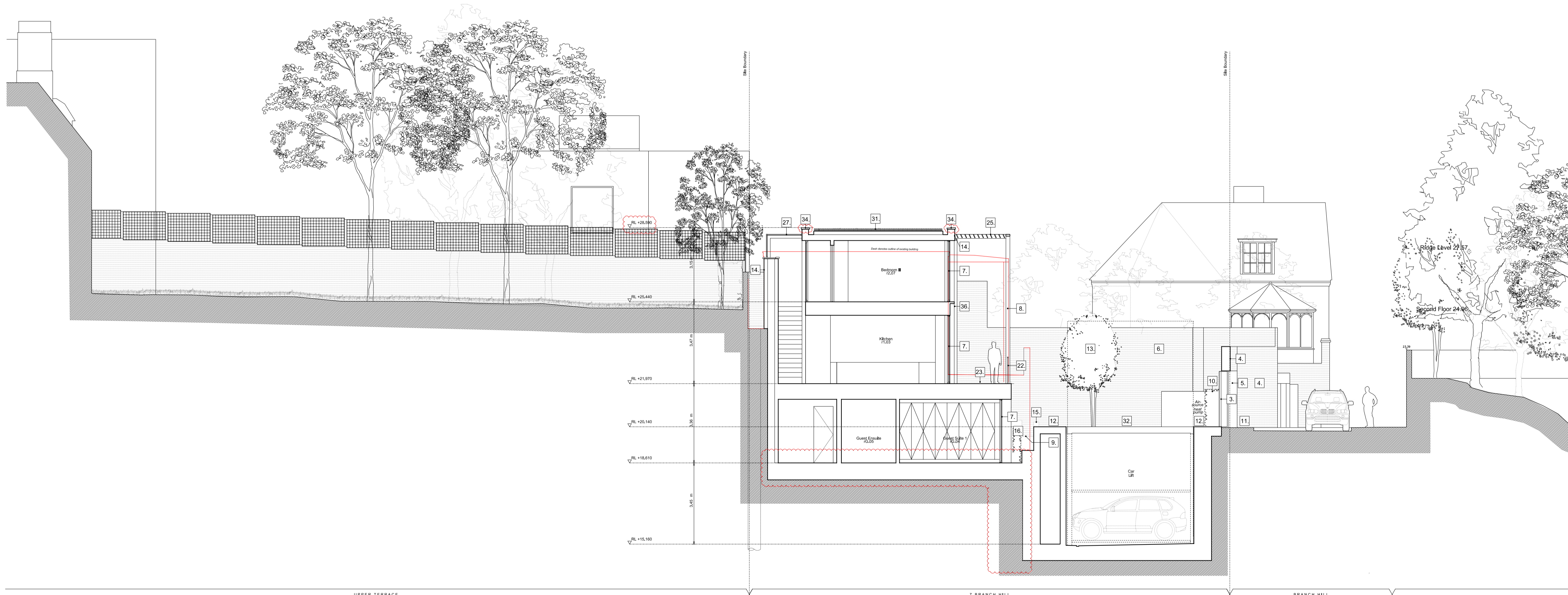
28 Margaret Street W1W 8RZ T. 020 7580 8336 www.mw-a.co.uk

Copyright Marek Wojciechowski Architects Limited. No implied license exists. This drawing should not be used to calculate areas for the purposes of valuation. All dimensions to be checked on site by the contractor and such dimensions to be their responsibility. Do not scale drawings. All work must comply with relevant British Standards and Building Regulations requirements. Drawing errors and omissions to be reported to the architect.





Existing Section CC



Proposed Section CC

- Legend: Existing Building**
- Existing London Stock brick wall
 - Existing brick paving
 - Existing steel-framed shade structure
 - Existing timber lattice atop London Stock brick garden wall
 - Existing garage door
 - Existing sliding vehicle gate to Branch Hill
 - Existing aluminium-framed glass sliding doors
 - Existing razor wire atop garden wall
 - Existing upstand of aluminium-framed rooflight

- Key:**
- Existing structure / earth
 - New structure
 - Outline of existing house

- Legend, Proposed Building**
1. New 'Bronze' (Electroplated Aluminium) front door
 2. New 'Bronze' (Electroplated Aluminium) fixed panels
 3. New 'Bronze' (Electroplated Aluminium) sliding gate
 4. New brickwork retaining wall in stock brickwork re-claimed from demolition
 5. 'Bronze' (Electroplated Aluminium) reveals to new opening in garden wall.
 6. Existing London stock brickwork wall retained
 7. 'Bronze' (Electroplated Aluminium) framed double-glazed sliding door system
 8. 'Bronze' (Electroplated Aluminium) frame. Refer drawing P_09
 9. Flush, floor-mounted 'Bronze' (Electroplated Aluminium) grilles to ventilate basement environment (below)
 10. Air-source heat pump enclosure. Refer to noise specialists documentation
 11. New vehicular crossover: Brick paving to match existing
 12. New Granite Selt paving to drive
 13. Mature specimen Ash in bespoke, raised, cast-stone planter. Refer to P_06
 14. 'Linear' brick external wall, stagger bond
 15. Raised curb in 'Linear' brickwork
 16. Yew hedging. Refer to P_06
 17. 'Bronze' (Electroplated Aluminium) double-glazed fixed window system
 18. Deep planting zone (designated by green hatch). Refer to P_06
 19. Double-glazed glass walkway to ground floor
 20. Flush, double-glazed fixed walk-on rooflight
 21. Lawn. Refer to P_06
 22. 'Bronze' (anodised aluminium) steel-framed, lightweight balustrade
 23. Yorkstone paving
 24. Yorkstone coping to retaining wall
 25. Pre-fabricated 'Bronze' (Electroplated Aluminium) brise soleil
 26. Balcony: Yorkstone paved, 'Bronze' (Electroplated Aluminium) fascia
 27. 'Bronze' (Electroplated Aluminium) portal frame with flush, fixed, double-glazed, obscured, sand blasted glass mull between frame
 28. 'Bronze' (Electroplated Aluminium) chimney flue
 29. Lift and counter weight. Lift overrun formed in 'linear' brick, with linear brick lid
 30. Fixed, double-glazed flush rooflight with obscured sand blasted glass
 31. Sedum roof, refer to P_06
 32. Car lift
 33. Car turn-table within basement
 34. Polyester powder-coated coping
 35. Mature specimen Copper Beech within deep planting zone. Refer to P_06
 36. Anodised aluminium feature spandrel panel
 37. 'Bronze' (Electroplated Aluminium) framed double-glazed 600mm window system
 38. Mature specimen Birch, within deep planting zone. Refer to P_06
 39. Operable, double-glazed flush rooflight
 40. Proposed timber lattice atop London Stock brick garden wall
 41. Glazed access hatch
 42. Fixed, double-glazed flush rooflight with obscured privacy film below



Rev D	28/02/2020	Minor Material Amendment Application Revisions bubbled
Rev C	02/02/2018	Minor Material Amendment Application Revisions bubbled
Rev B	17/10/2013	Issued for Planning Revisions bubbled
Rev A	07/06/2013	Issued for Planning

PLANNING ISSUE

Project No. **12021**

Client **Cheryl Plaza**

Date **June 2013**

Scale **1:50@A00, 1:100@A1**

Project **Judges Lodge, Branch Hill**

Drawing Title: **Existing & Proposed Section CC**

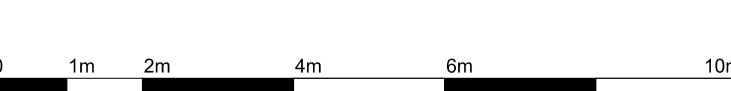
Drawing No. **P_16** Rev. **D**

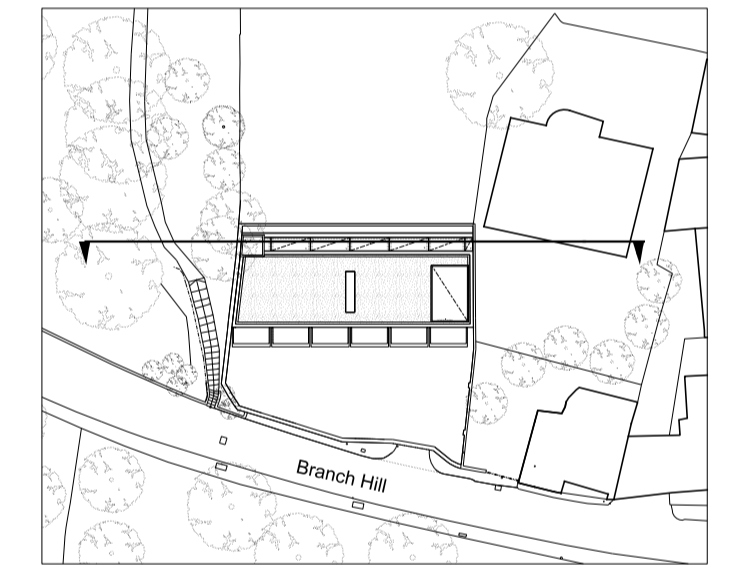
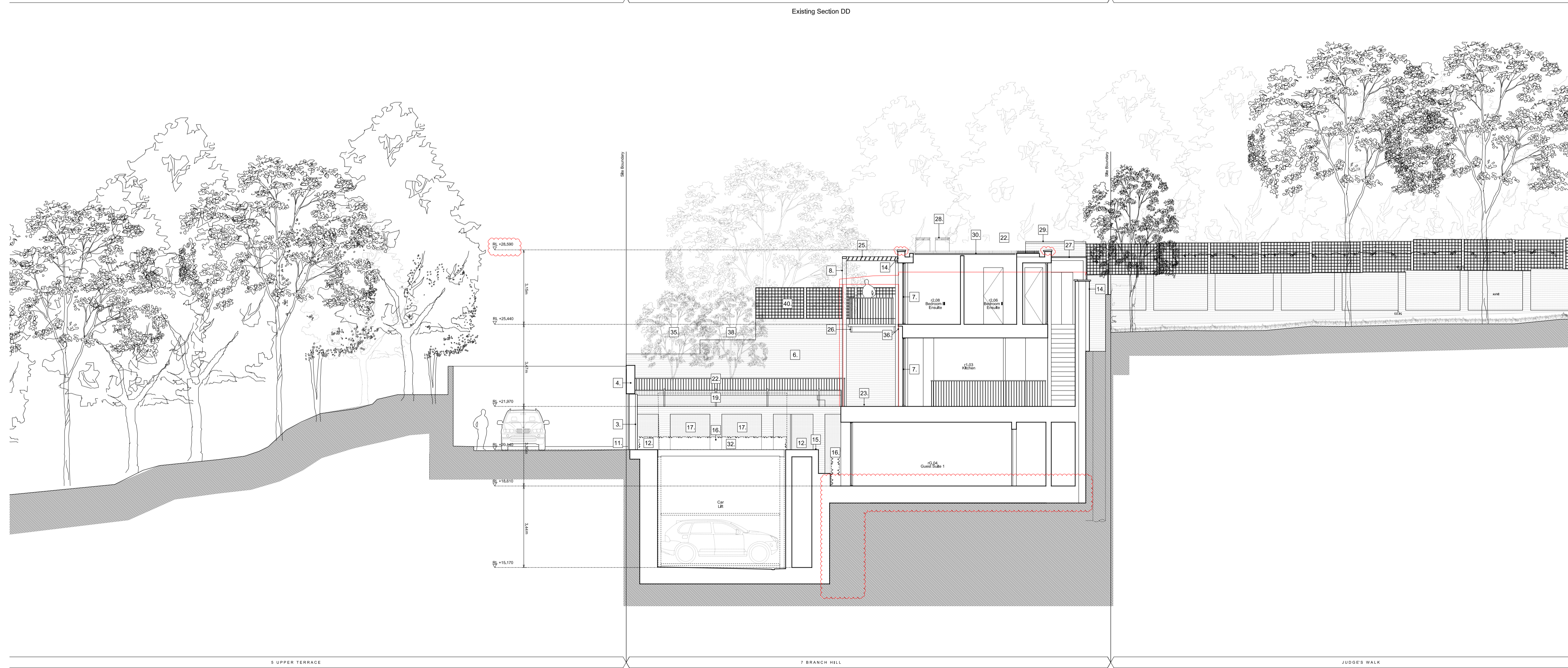
Drawn **LH** Approved **MW** Signed

Marek Wojciechowski Architects

28 Margaret Street W1W 8RZ T. 020 7580 8336 www.mw-a.co.uk

Copyright Marek Wojciechowski Architects Limited.
 No implied license exists. This drawing should not be used to calculate areas for the purposes of valuation. All dimensions to be checked on site by the contractor and such dimensions to be their responsibility. Do not scale drawings. All work must comply with relevant British Standards and Building Regulations requirements. Drawing errors and omissions to be reported to the architect.





Rev D	28/02/2020	Minor Material Amendment Application Revisions bubbled
Rev C	02/02/2018	Minor Material Amendment Application Revisions bubbled
Rev B	17/10/2013	Issued for Planning Revisions bubbled
Rev A	07/06/2013	Issued for Planning

PLANNING ISSUE

Project No.	12021
Client	Cheryl Plaza
Date	June 2013
Scale	1:50@A00, 1:100@A1
Project	Judges Lodge, Branch Hill
Drawing Title:	Existing and Proposed Section DD
Drawing No.	P_17
Drawn	LH
Approved	MW
Signed	

Marek Wojciechowski Architects

28 Margaret Street W1W 8RZ T. 020 7580 8336 www.mw-a.co.uk

Copyright Marek Wojciechowski Architects Limited.
 No implied license exists. This drawing should not be used to calculate areas for the purposes of valuation. All dimensions to be checked on site by the contractor and such dimensions to be their responsibility. Do not scale drawings. All work must comply with relevant British Standards and Building Regulations requirements. Drawing errors and omissions to be reported to the architect.

