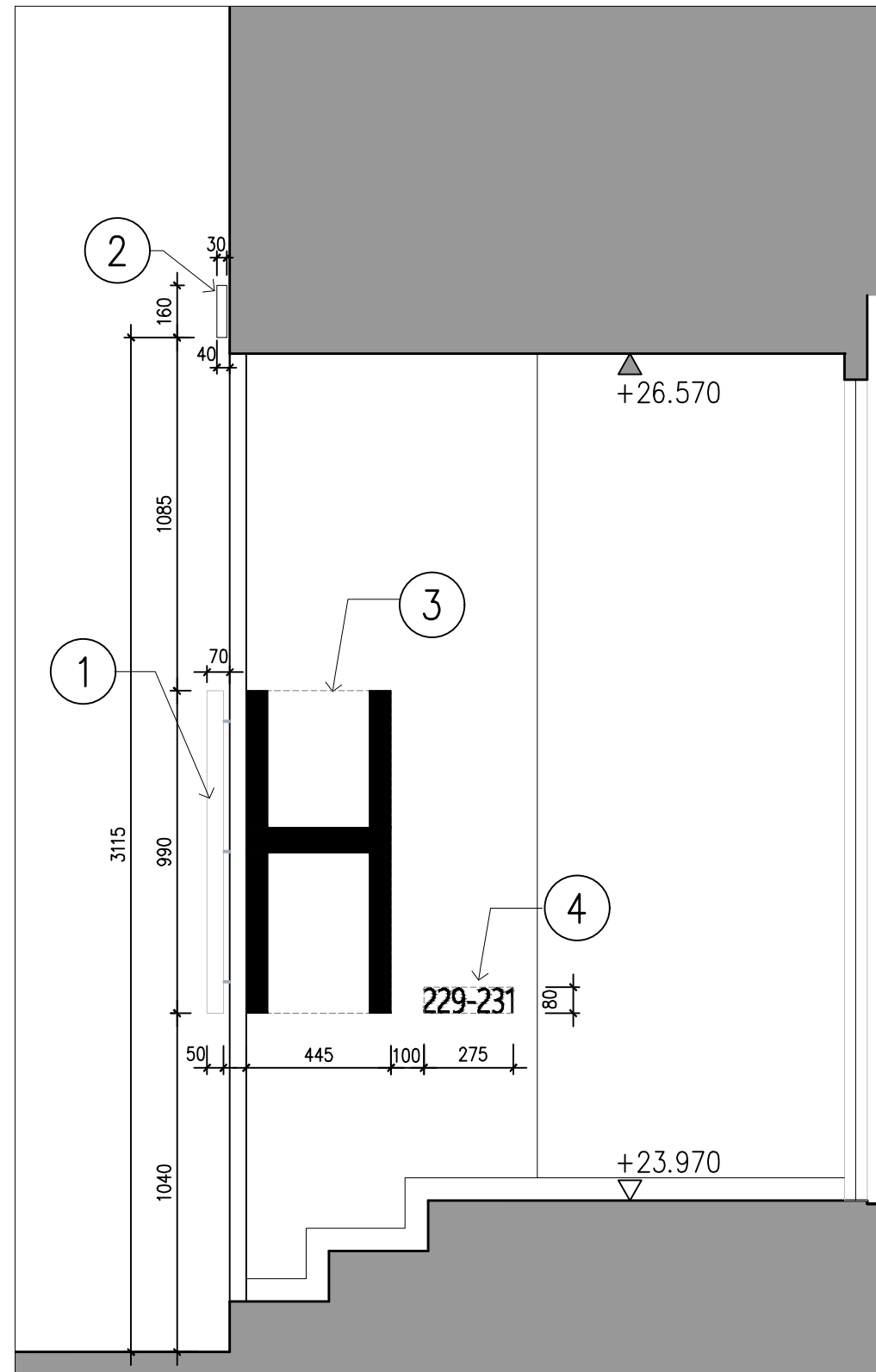


1 PROPOSED SIGNAGE – FRONT
 - scale: 1:20 (A3)

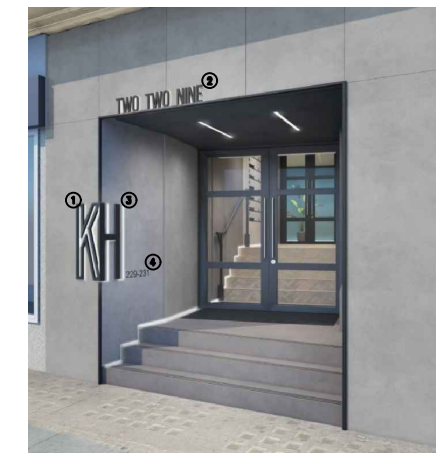


2 PROPOSED SIGNAGE – SIDE
 - scale: 1:20 (A3)

NOTE :
 Drawings are based on Maltby area survey. All Information on drawing are purely indicative. The position of doors, windows, structures ,chimneys, walls, stairs and lifts etc are for reference only.
 Drawing will be updated upon further detailed measurements.

KEY – LETTERING TYPES

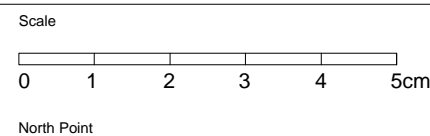
- ① Aluminium build-up rim + return, font Swiss721 LtCn BT, h=990mm,w=480mm, RAL 7016, 50mm returns with 20mm spacers, HALO illuminated with white light, illumination level approx. 452cd/m2
- ② Aluminium build-up solid face, font Swiss721 LtCn BT, h=160mm,w=1225mm, RAL 7016, 30mm returns with 10mm spacers, HALO illuminated with white light, illumination level approx. 452cd/m2
- ③ Aluminium build-up solid face, font Swiss721 LtCn BT, h=990mm, w=445mm, RAL 7016, 30mm returns with 20mm spacers, HALO illuminated with white light, illumination level approx. 452cd/m2
- ④ Aluminium flat cut, 3mm thick, font Swiss721 LtCn BT, h=80mm,w=275mm, RAL 7016, stud fixings to rear, non-illuminated



Rolfe Judd

Architecture Planning Interiors
 Old Church Court, Claylands Road, The Oval, London SW8 1NZ
 T 020 7556 1500
 www.rolfe-judd.co.uk

NOTES
 Copyright Rolfe Judd Ltd
 1 The Contractor must check and confirm all dimensions
 2 All discrepancies must be reported and resolved by the Architect before works commence
 3 This drawing is not to be scaled
 4 All work and materials to be in accordance with current applicable Statutory Legislation and to comply with all relevant Codes of Practice and British Standards



Rev continued

Revision	Date
1A Issued for Planning	24/04/20
1B Signage ref and setting-outs added as clouded	28/04/20

Client
 Sheet Street
 Aprirose

Project
 Kingsbourne House Entrance
 229-232 High Holborn

Drawing
 Proposed Signage
 Entrance Elevation

RJ Ref	Scale (A3)	Status	Revision
6303	1:20	Planning	1B

Drawing Number
T20D01

G:\6303\T_Series\T20\T20D01