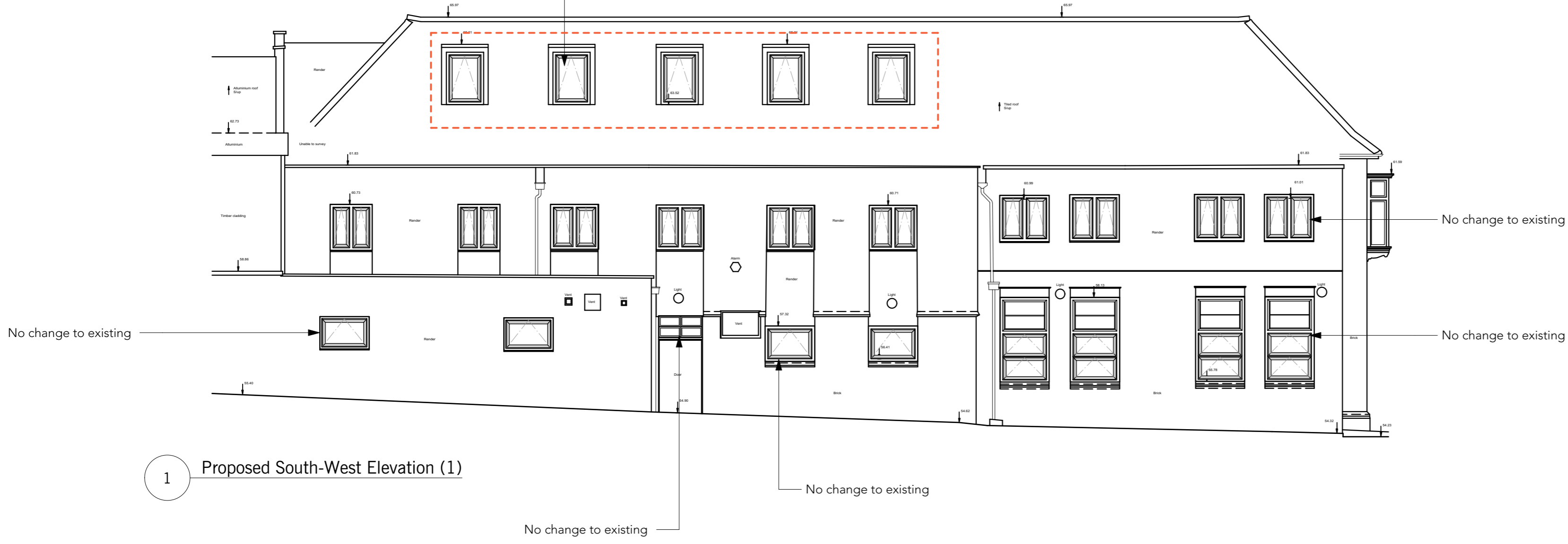



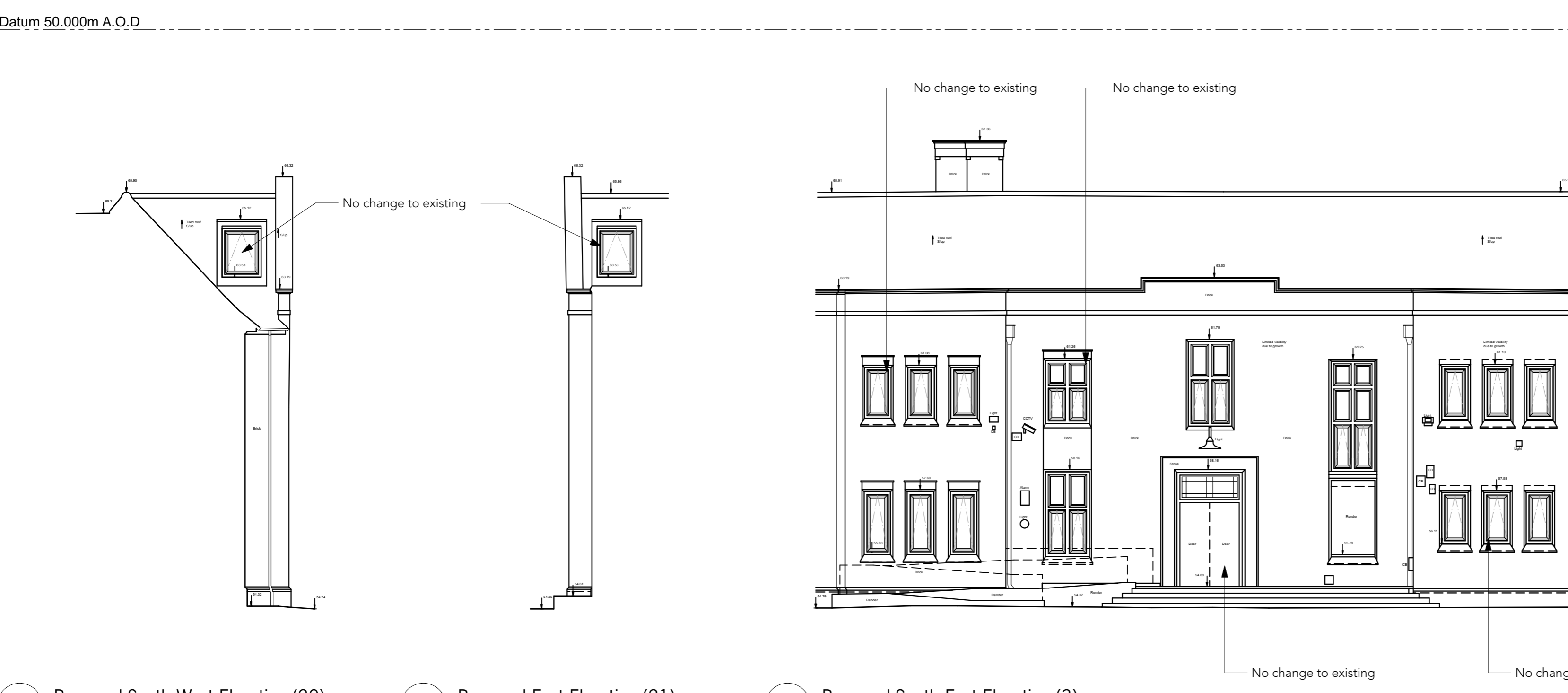
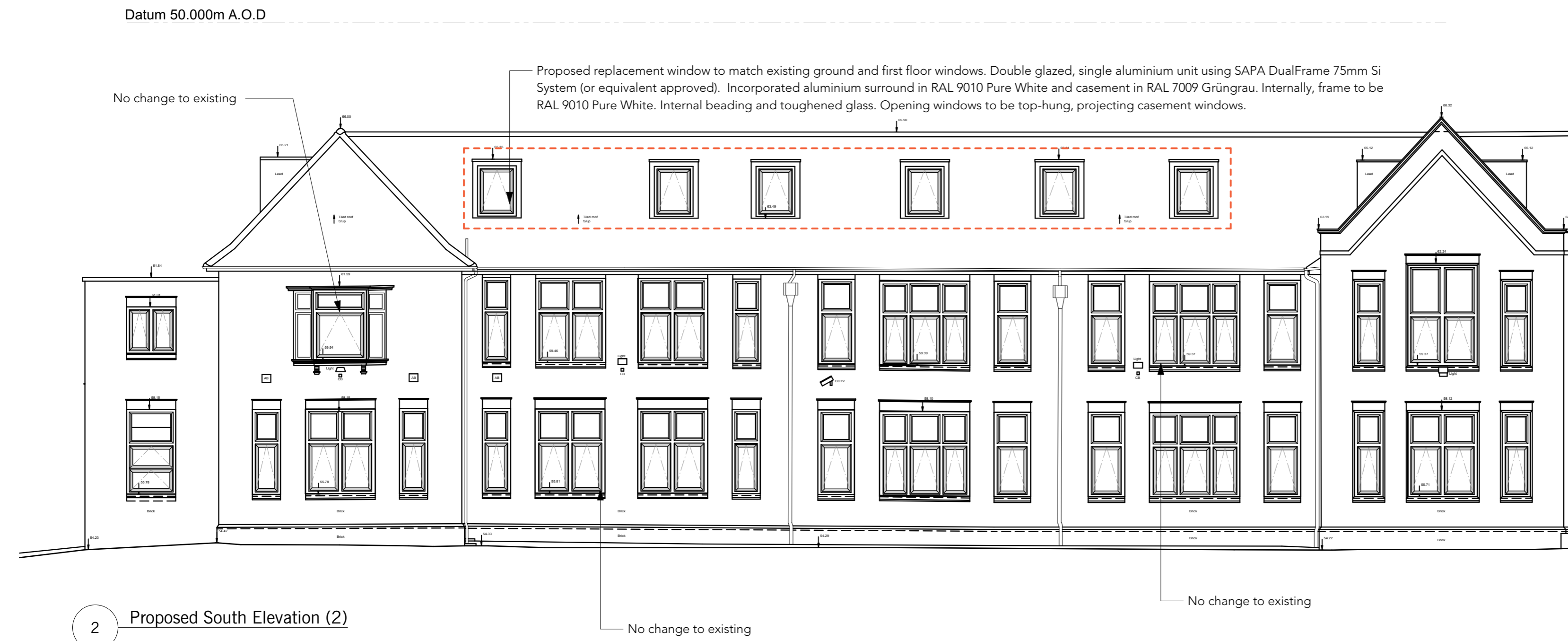
Proposed replacement window to match existing ground and first floor windows. Double glazed, single aluminium unit using SAPA DualFrame 75mm Si System (or equivalent approved). Incorporated aluminium surround in RAL 9010 Pure White and casement in RAL 7009 Grüngrau. Internally, frame to be RAL 9010 Pure White. Internal beading and toughened glass. Opening windows to be top-hung, projecting casement windows.



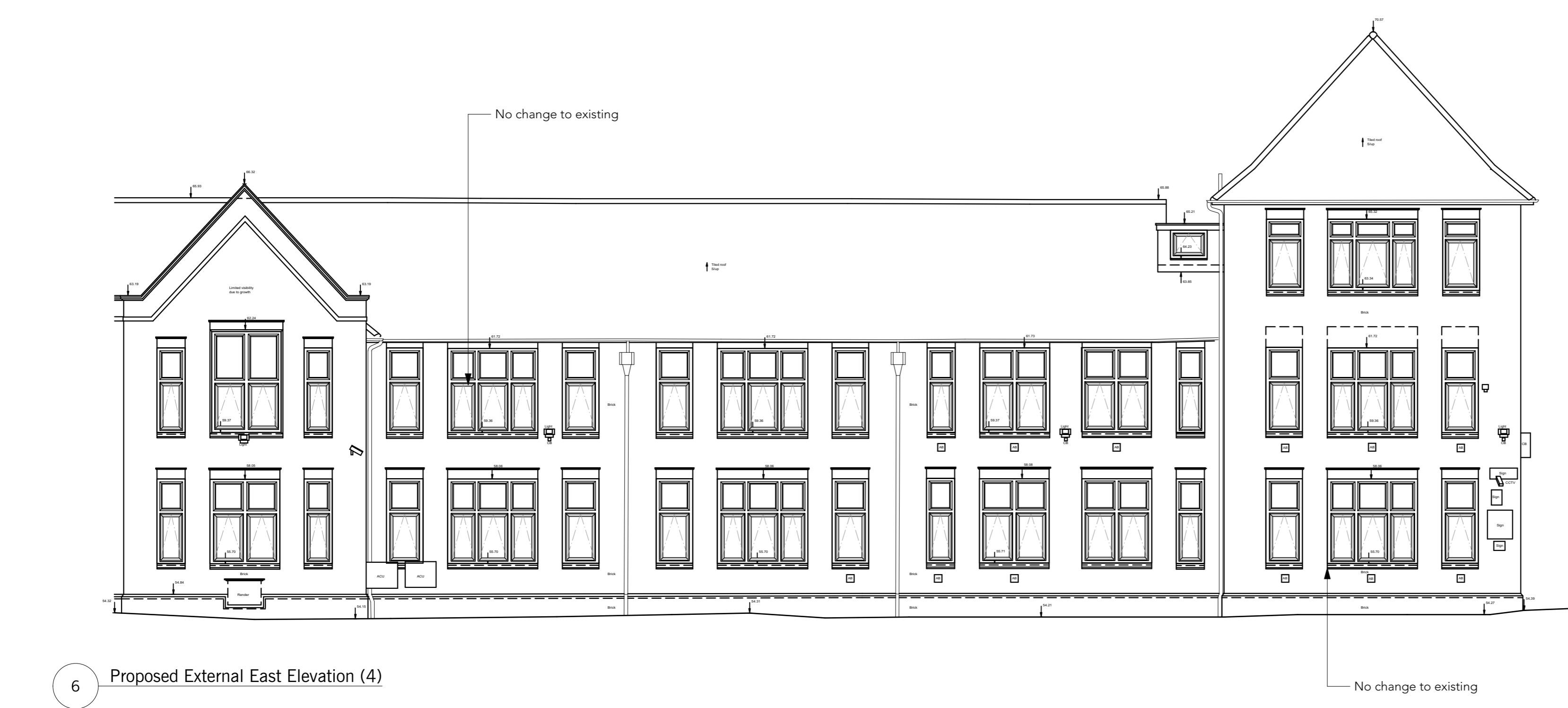
REVISION HISTORY

REV	DATE	DESCRIPTION

 windows referenced in this application



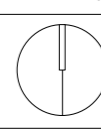
3 Proposed South-West Elevation (20) Datum 50.000m A.O.D.      4 Proposed East Elevation (21) Datum 50.000m A.O.D.      5 Proposed South-East Elevation (3) Datum 50.000m A.O.D.



6 Proposed External East Elevation (4) Datum 50.000m A.O.D.

Updated to reflect general 2019 works (inc. GF & 1F window replacement) CB  
23/01/2020 A revision date

Do not scale from drawings. Confirm all dimensions on site prior to manufacture. Confirm discrepancies with Architect prior to proceeding. Refer to all Engineers' documentation. notes

job no.	William Ellis School	notes
598	Highgate	job title
date	12/02/20	Proposed Elevations
drawn	Client: William Ellis School	date
checked	Scale: 1:100 @ A1 / 1:200 @ A3	dwg. title
	598_P-106	rev. no.
		A

PLANNING

© Sarah Wigglesworth Architects  
T +44 (0)20 7607 9200 F +44 (0)20 7607 5800  
E mail@swarch.co.uk W www.swarch.co.uk