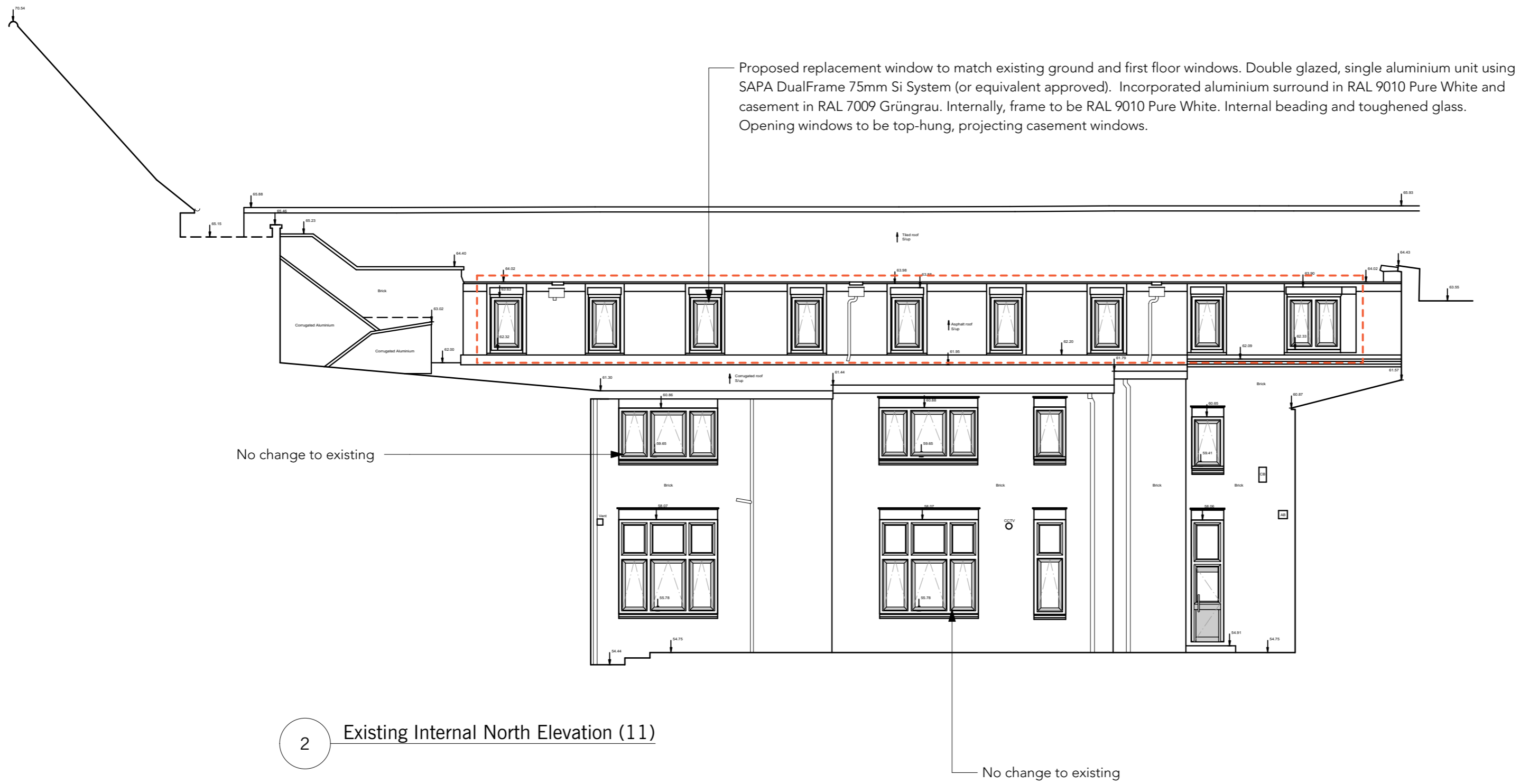


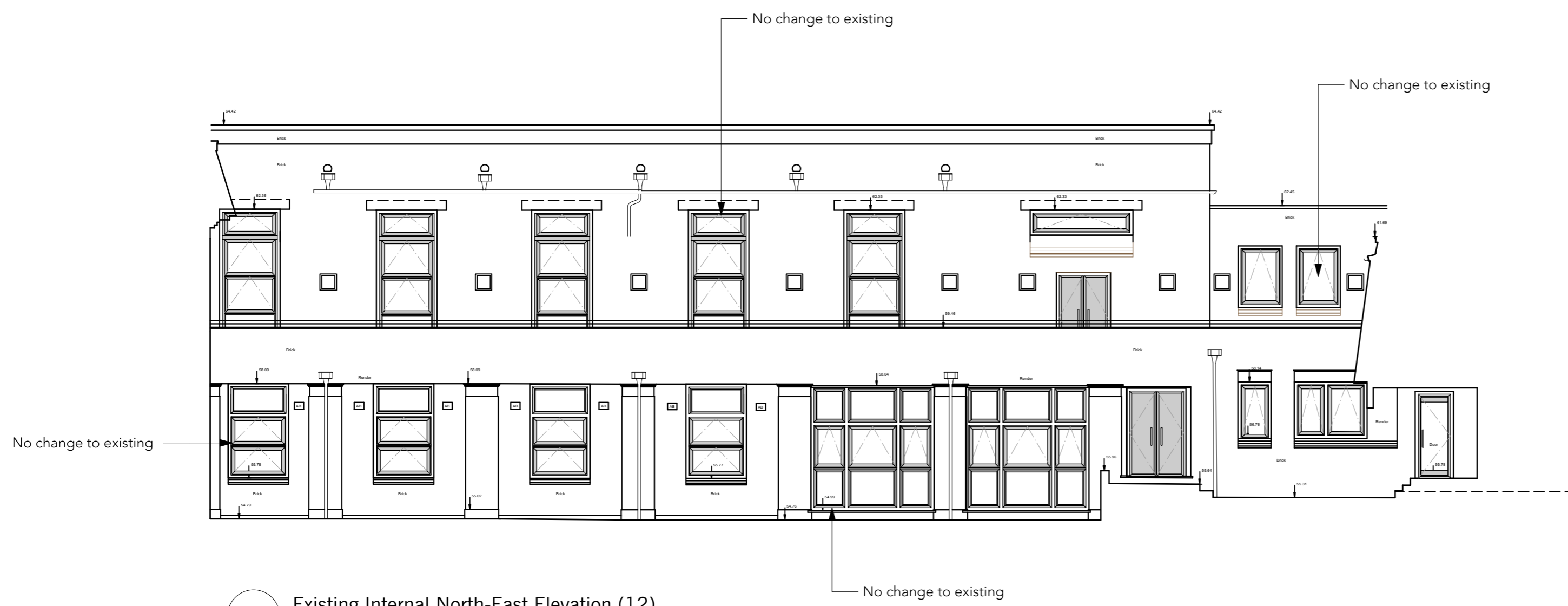
1 Existing Internal South Elevation (10)

Datum 50.000m A.O.D



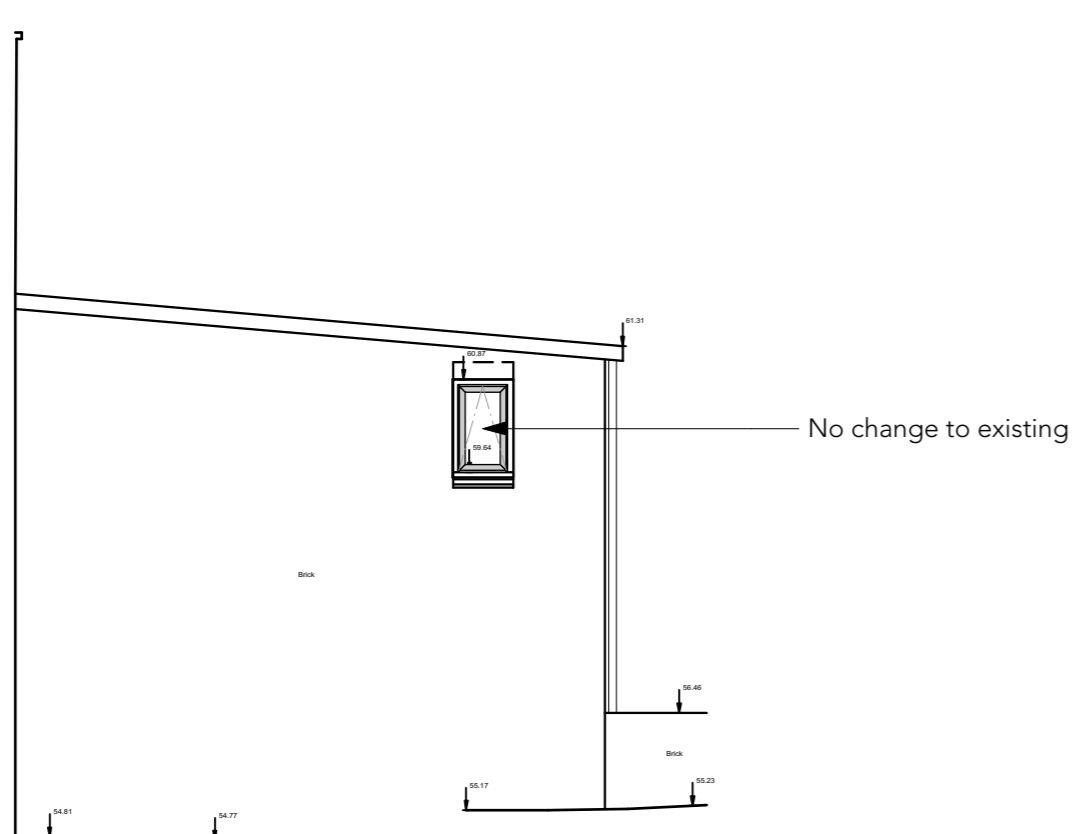
2 Existing Internal North Elevation (11)

Datum 50.000m A.O.D



3 Existing Internal North-East Elevation (12)

Datum 50.000m A.O.D



4 Existing Internal North Elevation (18)

Datum 50.000m A.O.D



5 Existing Int. South-West Elevation (18)

Datum 50.000m A.O.D

REVISION HISTORY		
REV	DATE	DESCRIPTION
		windows referenced in this application
23/01/2020	A	Updated to reflect general 2019 works (inc. GF & 1F window replacement)
date	revision	CB
Do not scale from drawings Confirm all dimensions on site prior to manufacture Confirm discrepancies with Architect prior to proceeding Refer to all Engineers' documentation		
notes		
job no.	William Ellis School	
598	Highgate	
date	12/02/20	
drawn	Client: William Ellis School	
checked	Scale: 1:100 @ A1 / 1:200 @ A3	
dwg. no.	598_P-109	rev. no. A
PLANNING		
© Sarah Wigglesworth Architects		
T +44 (0)20 7607 9200 F +44 (0)20 7607 5800		
E mail@swarch.co.uk W www.swarch.co.uk		