

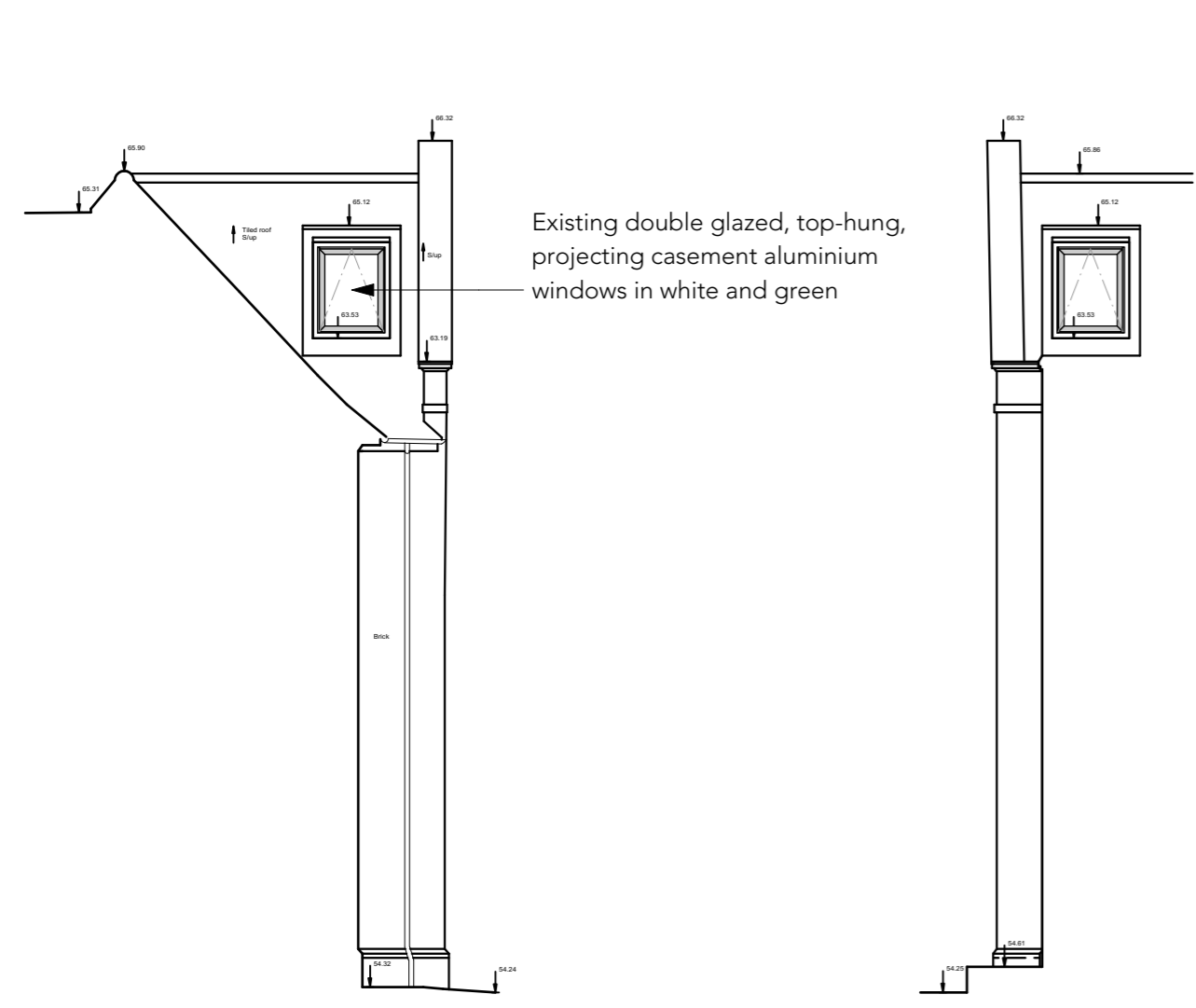
1 Existing South-West Elevation (1)

Datum 50.000m A.O.D



2 Existing South Elevation (2)

Datum 50.000m A.O.D



3 Existing South-West Elevation (20)

Datum 50.000m A.O.D



4 Existing East Elevation (21)

Datum 50.000m A.O.D



5 Existing South-East Elevation (3)

Datum 50.000m A.O.D



6 Existing East Elevation (4)

Datum 50.000m A.O.D

REVISION HISTORY		
REV	DATE	DESCRIPTION

Existing dormer windows in white PVC with sliding opening. Poor condition

Existing double glazed, top-hung, projecting casement aluminium windows in white and green

Existing double glazed, top-hung, projecting casement aluminium windows in white and green

Existing double glazed, top-hung, projecting casement aluminium windows in white and green

Existing dormer windows in white PVC with sliding opening. Poor condition

Existing double glazed, top-hung, projecting casement aluminium windows in white and green

Existing double glazed, top-hung, projecting casement aluminium windows in white and green

Existing double glazed, top-hung, projecting casement aluminium windows in white and green

Existing double glazed, top-hung, projecting casement aluminium windows in white and green

Existing double glazed, top-hung, projecting casement aluminium windows in white and green

Existing double glazed, top-hung, projecting casement aluminium windows in white and green

Existing double glazed, top-hung, projecting casement aluminium windows in white and green

Existing double glazed, top-hung, projecting casement aluminium windows in white and green

Existing double glazed, top-hung, projecting casement aluminium windows in white and green

Existing double glazed, top-hung, projecting casement aluminium windows in white and green

Existing double glazed, top-hung, projecting casement aluminium windows in white and green

Existing double glazed, top-hung, projecting casement aluminium windows in white and green

Existing double glazed, top-hung, projecting casement aluminium windows in white and green

Existing double glazed, top-hung, projecting casement aluminium windows in white and green

Existing double glazed, top-hung, projecting casement aluminium windows in white and green

Existing double glazed, top-hung, projecting casement aluminium windows in white and green

Existing double glazed, top-hung, projecting casement aluminium windows in white and green

Existing double glazed, top-hung, projecting casement aluminium windows in white and green

Existing double glazed, top-hung, projecting casement aluminium windows in white and green

Existing double glazed, top-hung, projecting casement aluminium windows in white and green

Existing double glazed, top-hung, projecting casement aluminium windows in white and green

Existing double glazed, top-hung, projecting casement aluminium windows in white and green

Existing double glazed, top-hung, projecting casement aluminium windows in white and green

Existing double glazed, top-hung, projecting casement aluminium windows in white and green

Existing double glazed, top-hung, projecting casement aluminium windows in white and green

Existing double glazed, top-hung, projecting casement aluminium windows in white and green

Existing double glazed, top-hung, projecting casement aluminium windows in white and green

Existing double glazed, top-hung, projecting casement aluminium windows in white and green

Existing double glazed, top-hung, projecting casement aluminium windows in white and green

Existing double glazed, top-hung, projecting casement aluminium windows in white and green

Existing double glazed, top-hung, projecting casement aluminium windows in white and green

Existing double glazed, top-hung, projecting casement aluminium windows in white and green

Existing double glazed, top-hung, projecting casement aluminium windows in white and green

Existing double glazed, top-hung, projecting casement aluminium windows in white and green

Existing double glazed, top-hung, projecting casement aluminium windows in white and green

Existing double glazed, top-hung, projecting casement aluminium windows in white and green

Existing double glazed, top-hung, projecting casement aluminium windows in white and green

Existing double glazed, top-hung, projecting casement aluminium windows in white and green

Existing double glazed, top-hung, projecting casement aluminium windows in white and green

Existing double glazed, top-hung, projecting casement aluminium windows in white and green

Existing double glazed, top-hung, projecting casement aluminium windows in white and green

Existing double glazed, top-hung, projecting casement aluminium windows in white and green

Existing double glazed, top-hung, projecting casement aluminium windows in white and green

Existing double glazed, top-hung, projecting casement aluminium windows in white and green

Existing double glazed, top-hung, projecting casement aluminium windows in white and green

Existing double glazed, top-hung, projecting casement aluminium windows in white and green

Existing double glazed, top-hung, projecting casement aluminium windows in white and green

Existing double glazed, top-hung, projecting casement aluminium windows in white and green

Existing double glazed, top-hung, projecting casement aluminium windows in white and green

Existing double glazed, top-hung, projecting casement aluminium windows in white and green

Existing double glazed, top-hung, projecting casement aluminium windows in white and green

Existing double glazed, top-hung, projecting casement aluminium windows in white and green

Existing double glazed, top-hung, projecting casement aluminium windows in white and green

Existing double glazed, top-hung, projecting casement aluminium windows in white and green

Existing double glazed, top-hung, projecting casement aluminium windows in white and green

23/01/2020	B	Updated to reflect general 2019 works (inc. GF & 1F window replacement)	CB
17/02/2018	A	Add window/door numbers for tender of 2019 window/door replacement works	CB

Do not scale from drawings
Confirm all dimensions on site prior to manufacture
Confirm discrepancies with Architect prior to proceeding
Refer to all Engineers' documentation

job no.	William Ellis School	notes
598	Highgate	
date	Existing Elevations	job title
12/02/20		
drawn	Client: William Ellis School	
checked	Scale: 1:100 @ A1 / 1:200 @ A3	
	dwg. no.	rev. no.
	598_E-106	B

PLANNING

© Sarah Wigglesworth Architects
T +44 (0)20 7607 9200 F +44 (0)20 7607 5800
E mail@swarch.co.uk W www.swarch.co.uk