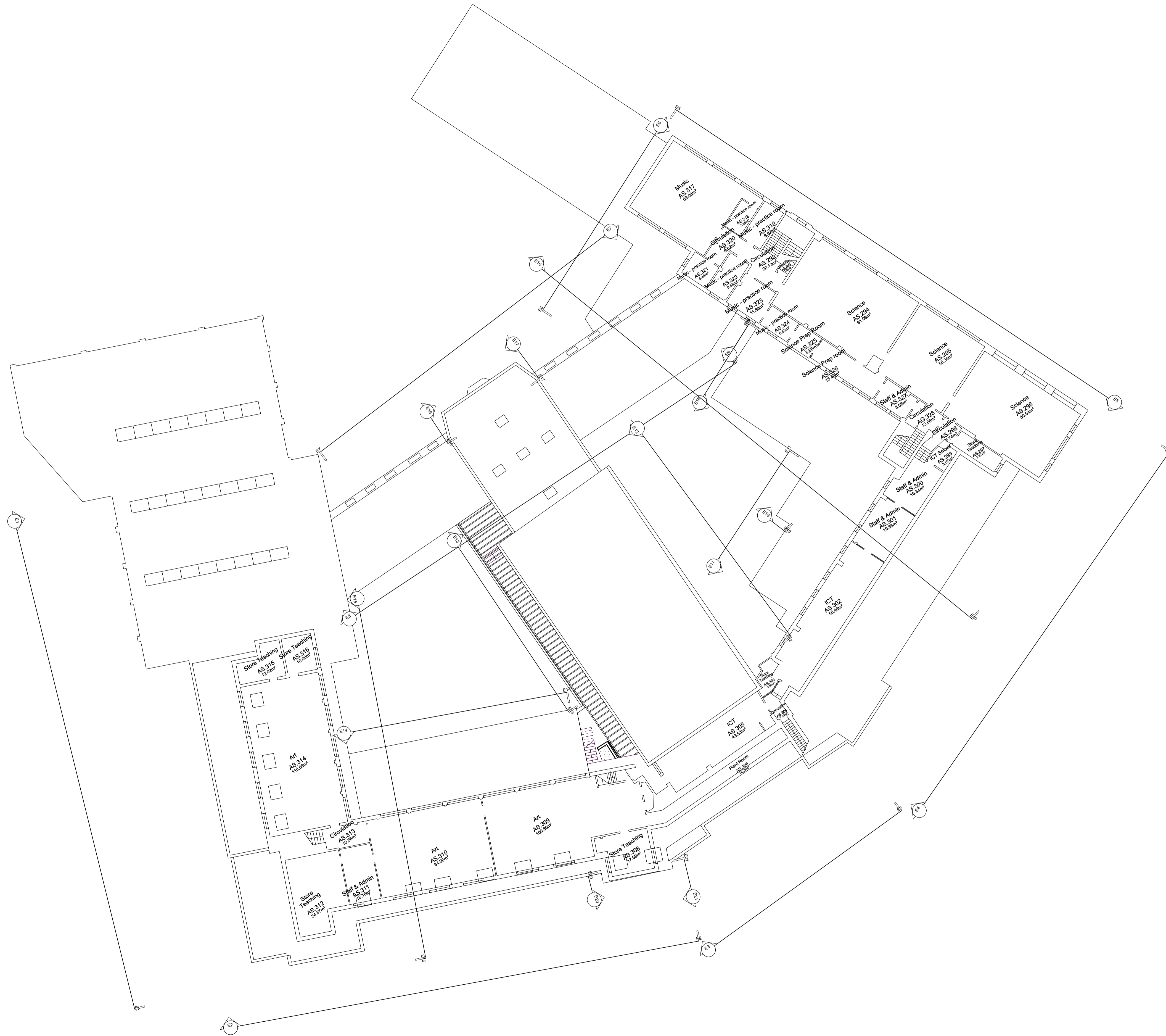


REVISION HISTORY

REV	DATE	DESCRIPTION



23/01/2020	B	Updated to reflect general 2019 works (inc. GF & 1F window replacement)	CB
17/02/2019	A	Add existing cover to internal walkway	CB
date	revision		revision

Do not scale from drawings  
 Confirm all dimensions on site prior to manufacture  
 Confirm discrepancies with Architect prior to proceeding  
 Refer to all Engineers' documentation

job no	William Ellis School Highgate		job title
598			
date	12/02/20		dwg. title
	Existing SF Plan		
Client:	William Ellis School		
drawn	Scale: 1:200 @ A1 / 1:500 @ A3		
CB	dwg. no.	598_E-104	rev. no.
			B

PLANNING

© Sarah Wigglesworth Architects  
 T +44 (0)20 7607 9200 F +44 (0)20 7607 5800  
 E mail@swarch.co.uk W www.swarch.co.uk

1 Existing Second Floor Plan