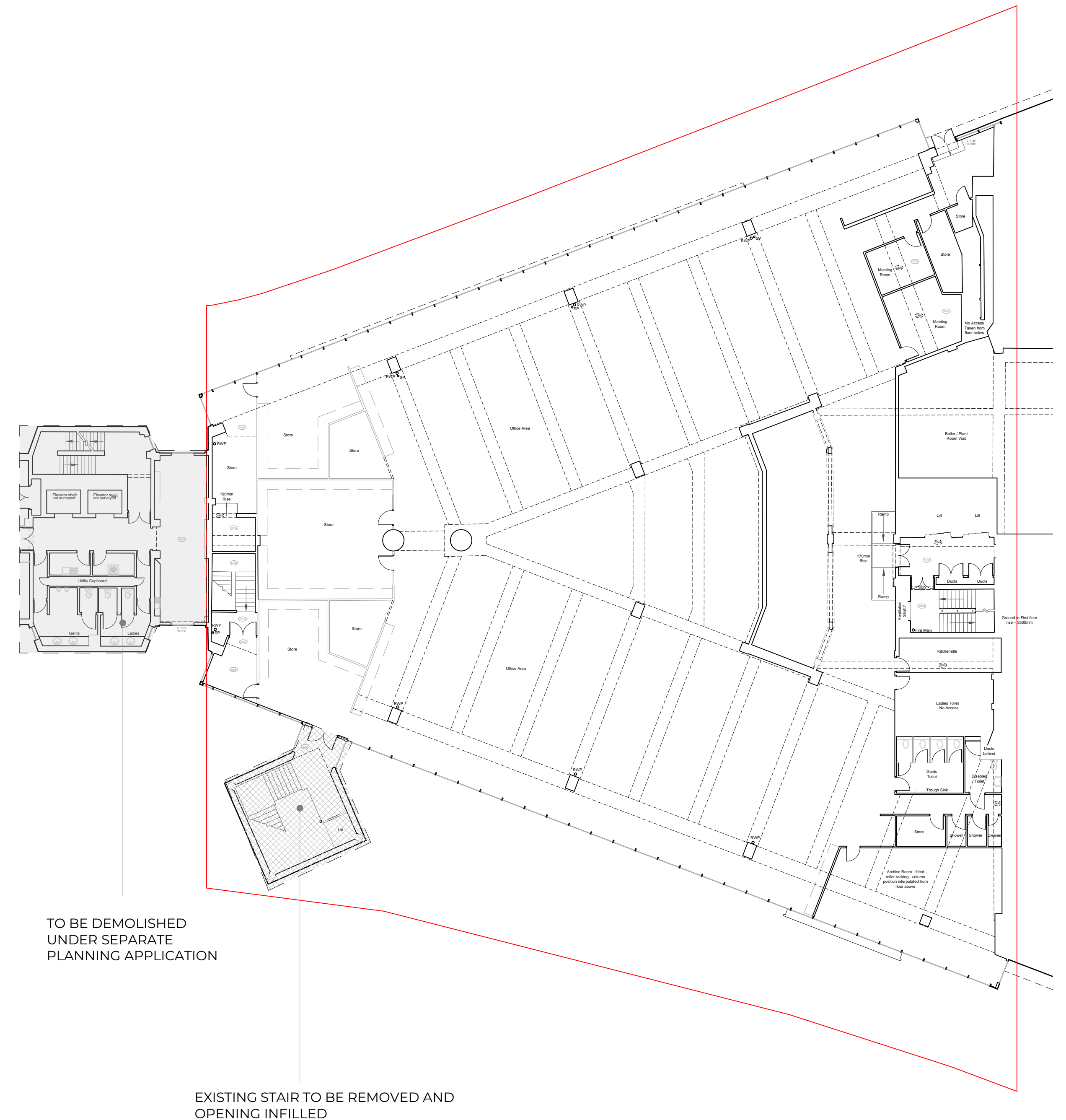
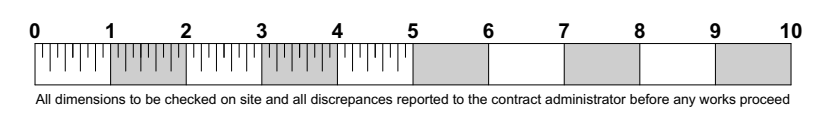


GROUND FLOOR PLAN



FIRST FLOOR PLAN



A	17/02/2020	REVISIONS TO PLANNING SUBMISSION	
Rev	Date	Description	
		Job Title	Drawing Name
		<b>6A St Pancras Way</b>	<b>Existing Plans</b>
14 Little Portland Street, London, W1W 8BN T: 020 7637 0601 W: www.reefestates.co.uk		Drawing Status	Drawing Scale
		<b>PLANNING SUBMISSION</b>	<b>1:200 @A1</b>
		Date first Issued	Layout ID Revision
		<b>19.12.19</b>	<b>03</b> A

© Copyright to Urban Reef Limited and/or all Reef Estates Limited Companies