

KSRARCHITECTS

KSR Architects LLP
14 Greenland Street
London NW1 0ND

mail@ksrarchitects.com
t: +44 (0)20 7692 5000
www.ksrarchitects.com

Reg No OC 0379481, Registered in England & Wales
Registered Address: 14 Greenland Street
Camden Town, London NW1 0ND

PROJECT **6A & 6B NUTLEY TERRACE**
SUBJECT **EXAMPLE FOR BRICK TYPE**
NAME Maria Zappone

REF. **17058**
DATE **23 APRIL 2020**

Below are photos of a KSR project at 24-26 Ingram Avenue London NW11 6TL.

Brick Specification

Face brick: Michelmersh Handmade 70% Dark Multi and 30% Red Multi.

Feature brick: Charnwood Mixed Hampshire Red Facing.

Note this project has different features in feature brick from 6A & 6B Nutley Terrace.



Street view

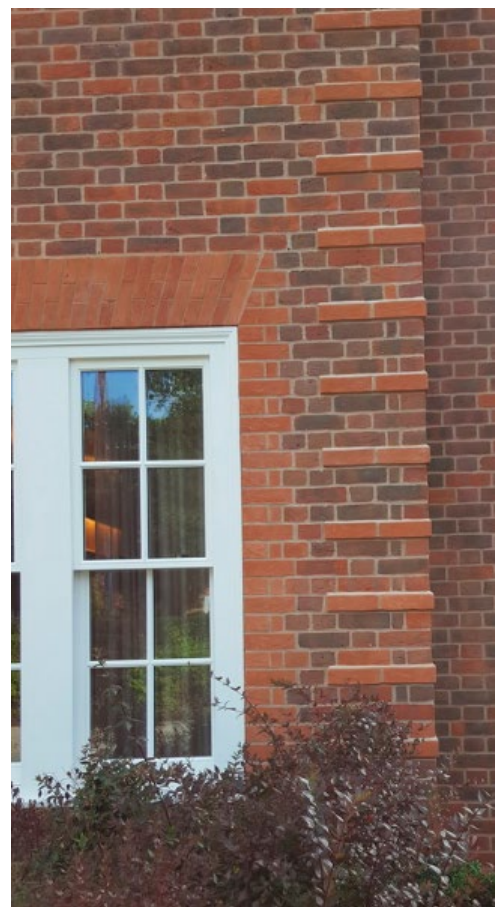


Front drive view



Entrance detail

END



Quoin detail