



LIGHTING PROPOSAL DOCUMENT

P2 BUILDING, EXTERIOR KINGS CROSS, LONDON

Document Reference: KXC-P2-001-J-00944-63-904

Date: 03.04.20

Revision: 02

michaelgrubbstudio.com

info@michaelgrubbstudio.com

+44 1202 511 005

Stage 4.



Contents

1.0 - Stage 3 - Lighting Design Overview

1.1 - Stage 3 - Lighting Design (Speirs + Major)

2.0 - Stage 4 - Lighting Proposals

2.1 - Ground Floor - Facade Lighting

2.2 - Ground Floor - Loggia Lighting

2.3 - Cross Section - Facade Lighting

2.4 - Ground Floor - Facade Lighting

2.5 - Ground Floor - Feature Shutter Lighting

2.6 - Fifth Floor - Terrace Bench & Planter Lighting

2.7 - North Elevation - Facade Lighting

2.8 - South Elevation - Facade Lighting

2.9 - East Elevation - Facade Lighting

2.10 - East Elevation - Facade Lighting Control

2.11 - West Elevation - Facade Lighting

3.0 - STAGE 4 - Updated Luminaires

3.1 - Proposed Alternative Luminaires

3.2 - Proposed Alternative Luminaires

4.0 - Stage 4 - Lighting Layout Plans

4.1 - Ground Floor - Low Level Lighting Layout Plan

4.2 - Ground Floor - High Level Lighting Layout Plan

4.3 - First Floor - High Level Lighting Layout Plan

4.4 - Second Floor - High Level Lighting Layout Plan

4.5 - Fifth Floor - Low Level Lighting Layout Plan

4.6 - Ninth Floor - High Level Lighting Layout Plan

4.7 - North Elevation - Lighting Layout]

4.8 - South Elevation - Lighting Layout

4.9 - East Elevation - Lighting Layout

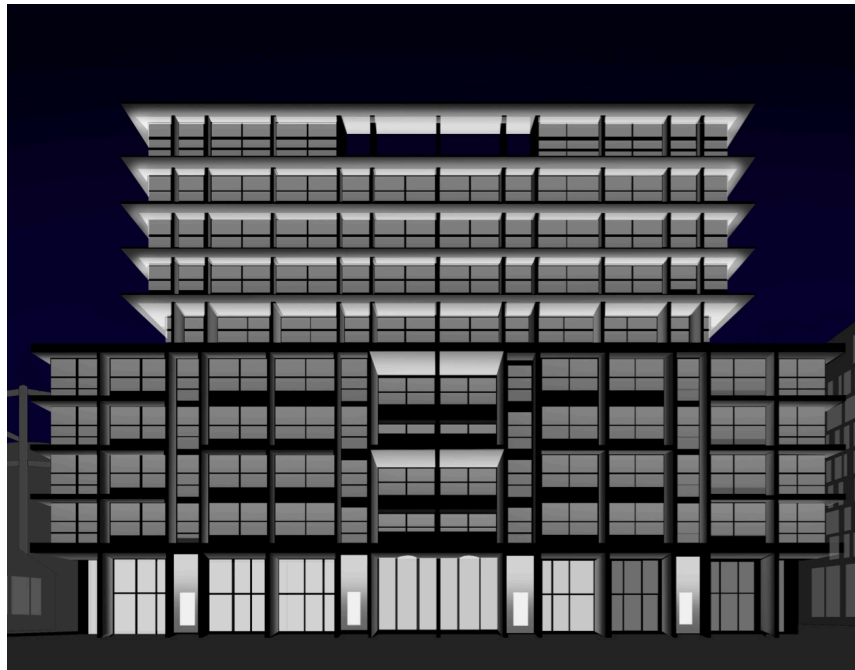
4.10 - West Elevation - Lighting Layout

1.0

STAGE 3, LIGHTING DESIGN OVERVIEW



Spiers + Major Lighting Design



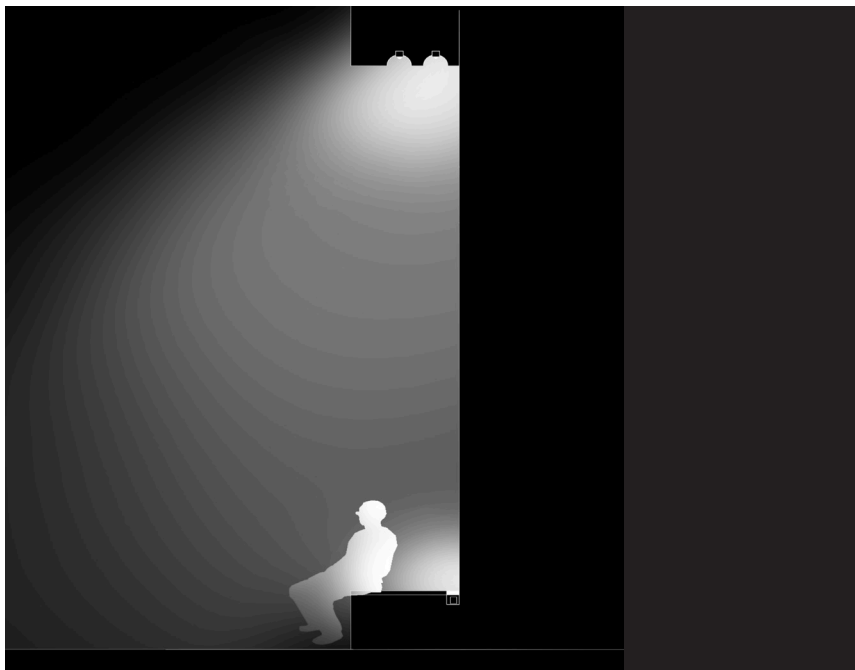
Overarching Facade Lighting



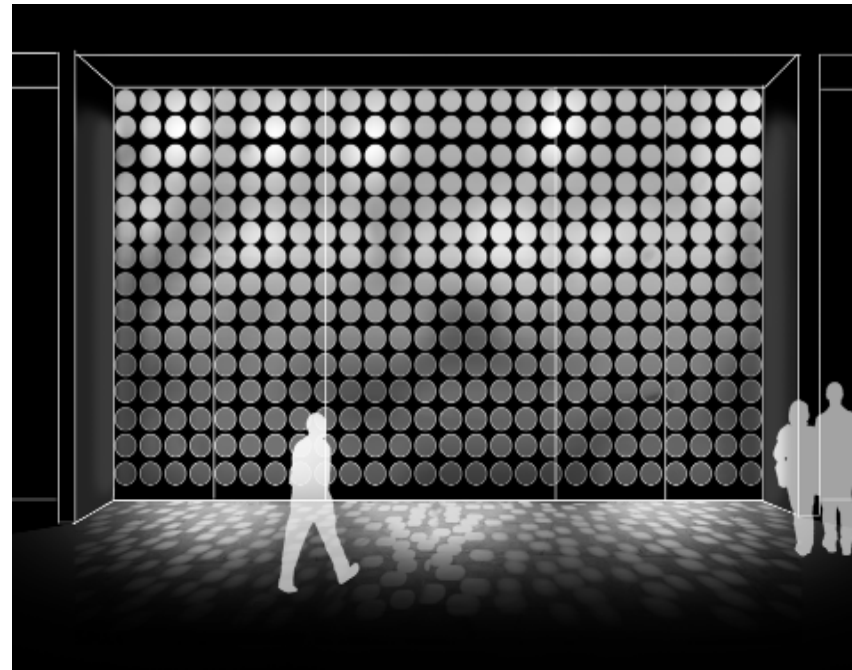
Soffit Recessed Downlight Clusters



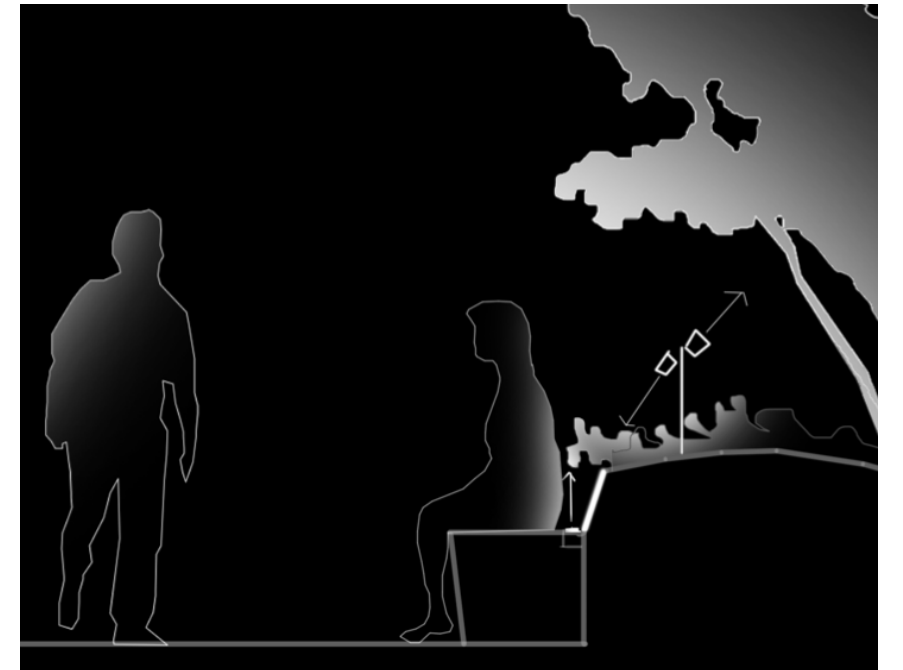
Direct/Indirect Facade Lighting



Loggia Bench and Soffit Recessed Lighting



Feature Shutter Lighting



Terrace Planting and Bench Lighting

2.0

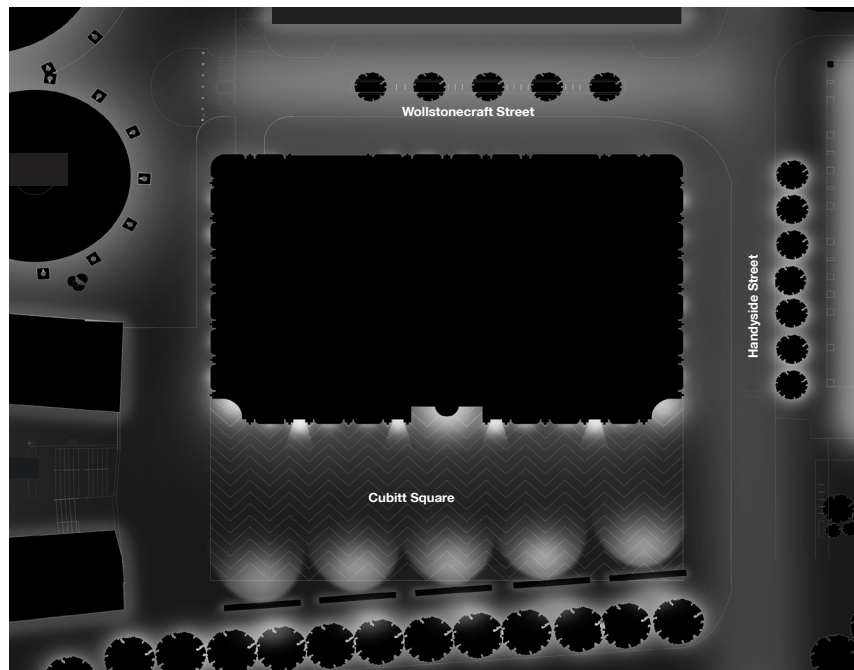
STAGE 4, LIGHTING PROPOSALS



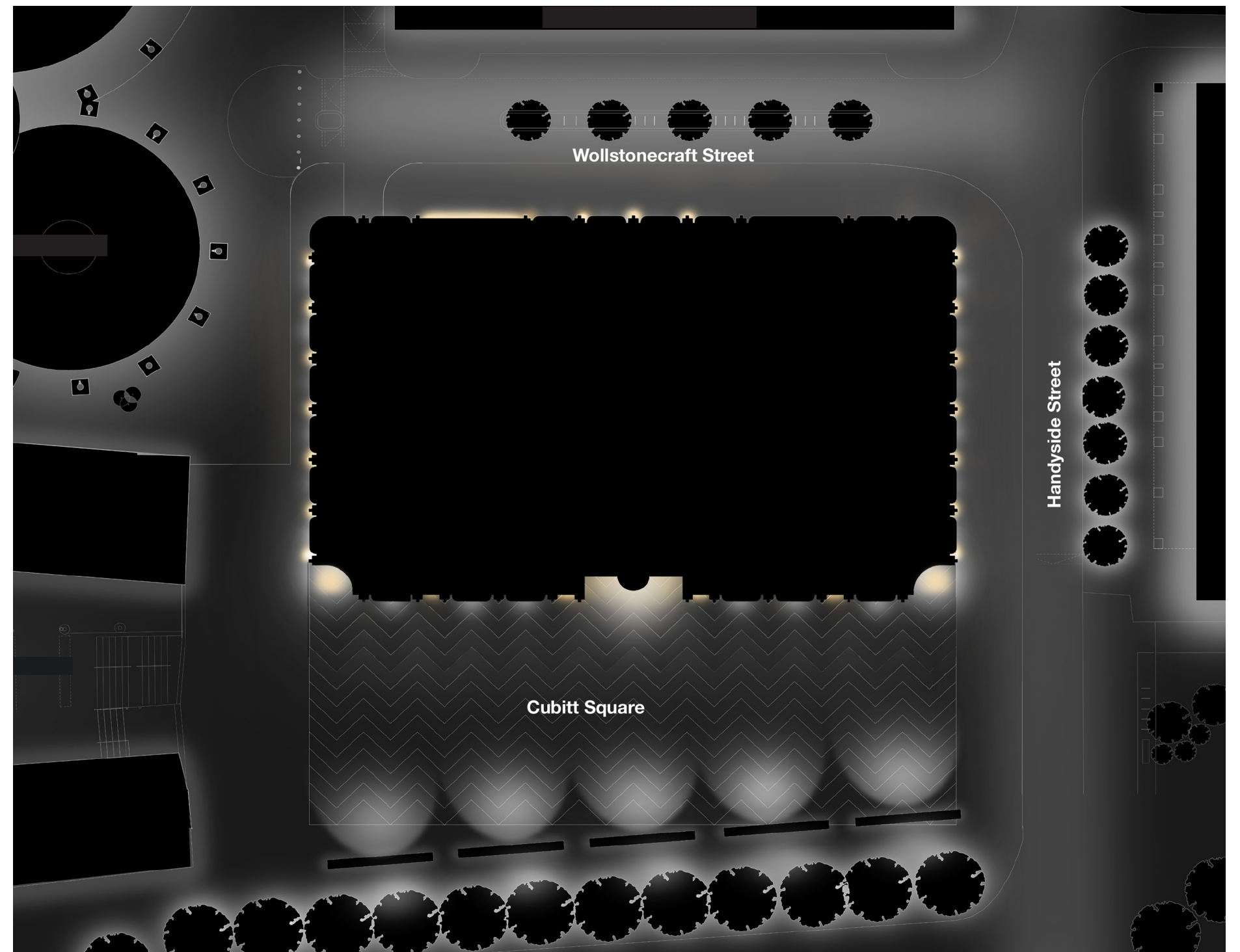
Ground Floor - General Facade Lighting

Alterations include:

1. Reduced Reference XG, Loggia soffit recessed Downlighting.
2. Amended Direct / Indirect Wall Luminaire Layout and Quantity.



Stage 3 - Lighting Design.

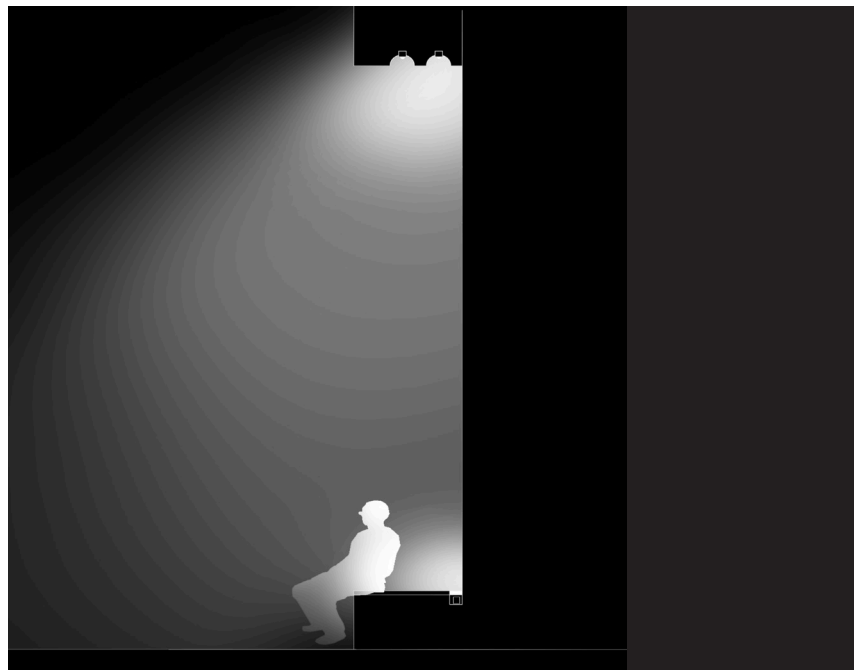


Stage 4 - Proposed Lighting Design Amendments.

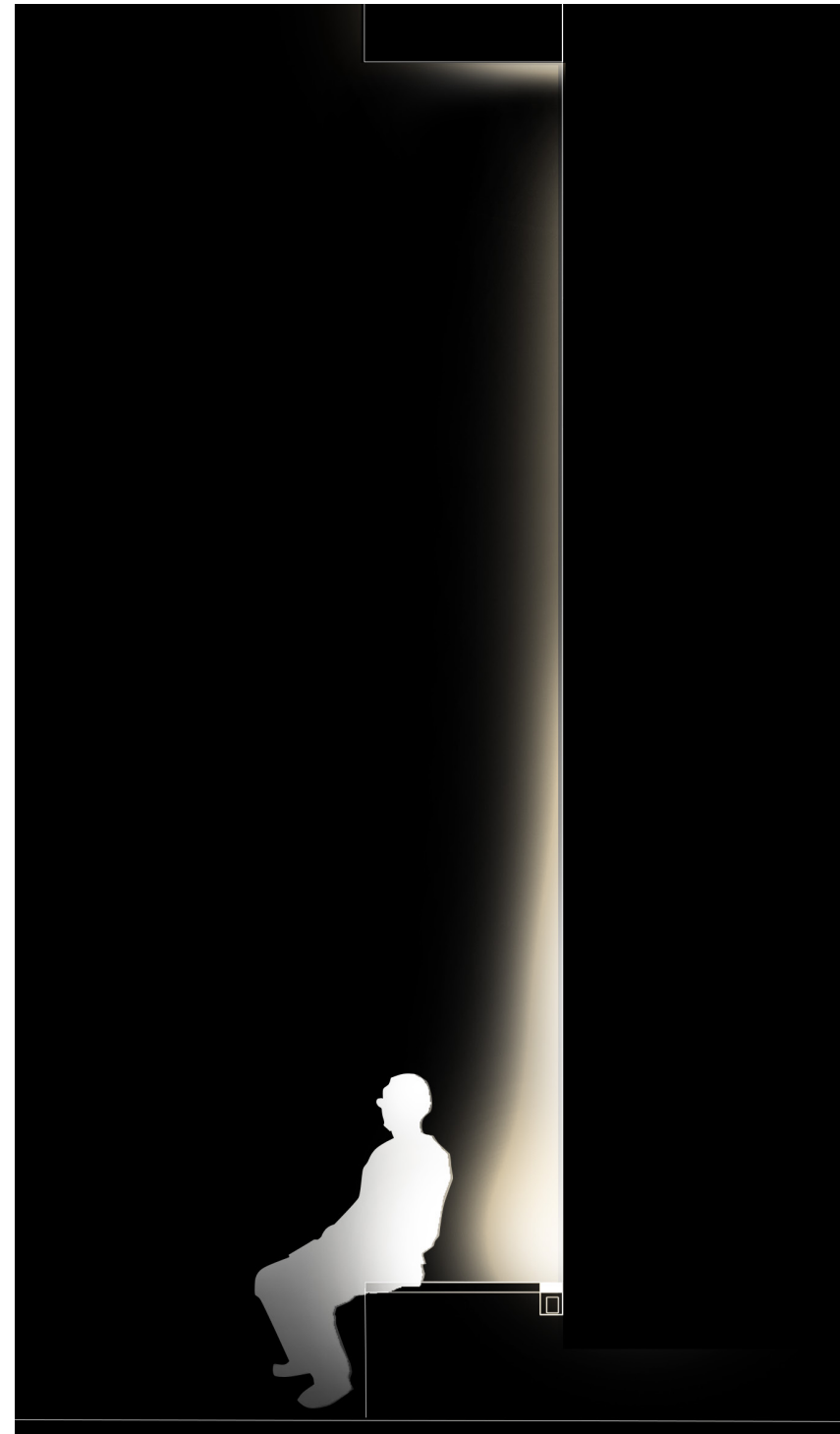
Ground Floor - Loggia Lighting

Alterations include:

1. Removal of Reference XG, Loggia soffit recessed downlights.
2. Respecification of Reference XB, linear LED uplight luminaires, to provide higher outputs.



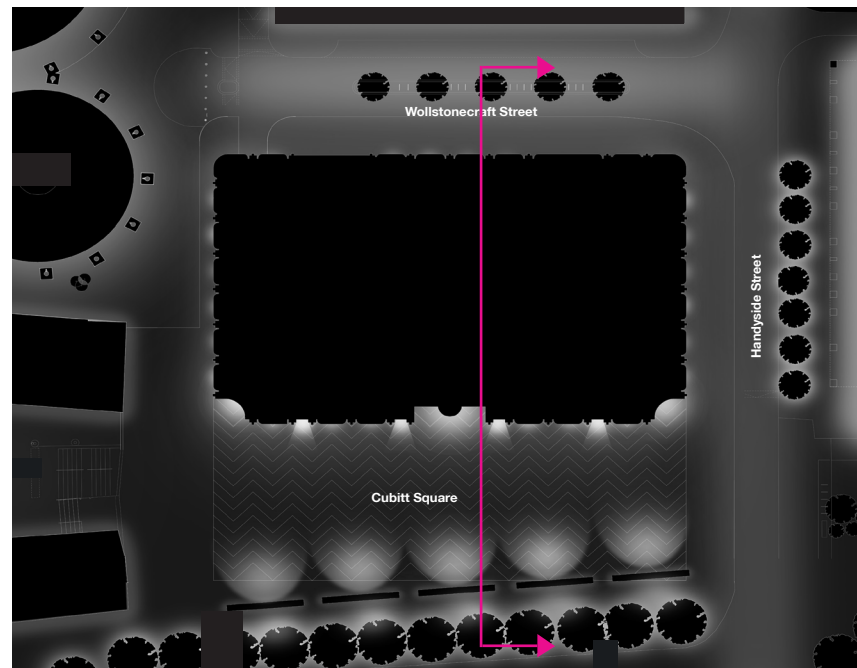
Stage 3 - Lighting Design.



Stage 4 - Proposed Lighting Design Amendments.



Cross Section - Facade Lighting



Section Key



Proposed Lighting Design, (Including Adjusted Cubbit Square Column mounted Luminaires).

Ground Floor - Facade Lighting

Alterations include:

1. Amended Reference XJ arrangement.



Stage 3 - Lighting Design.

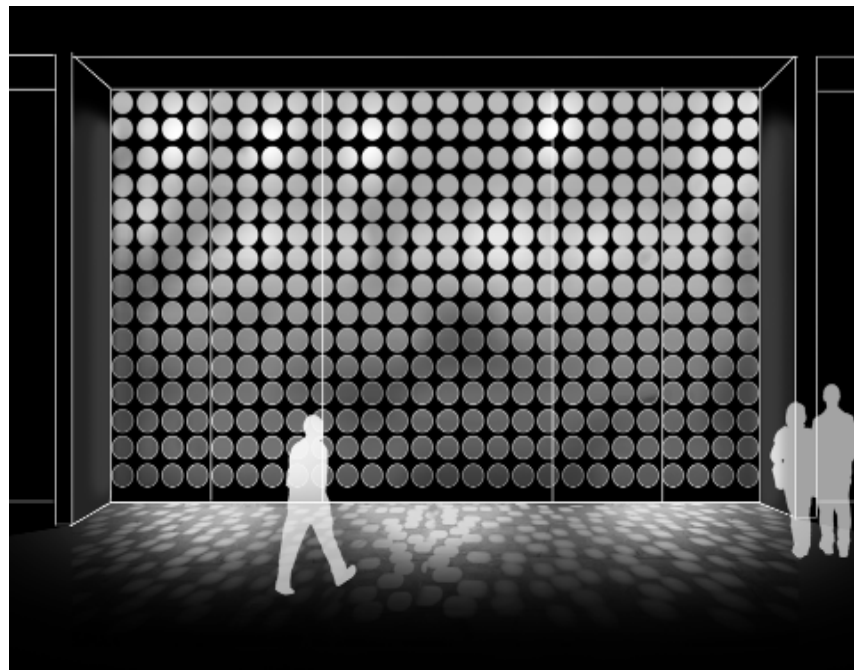


Stage 4 - Proposed Lighting Design Amendments.

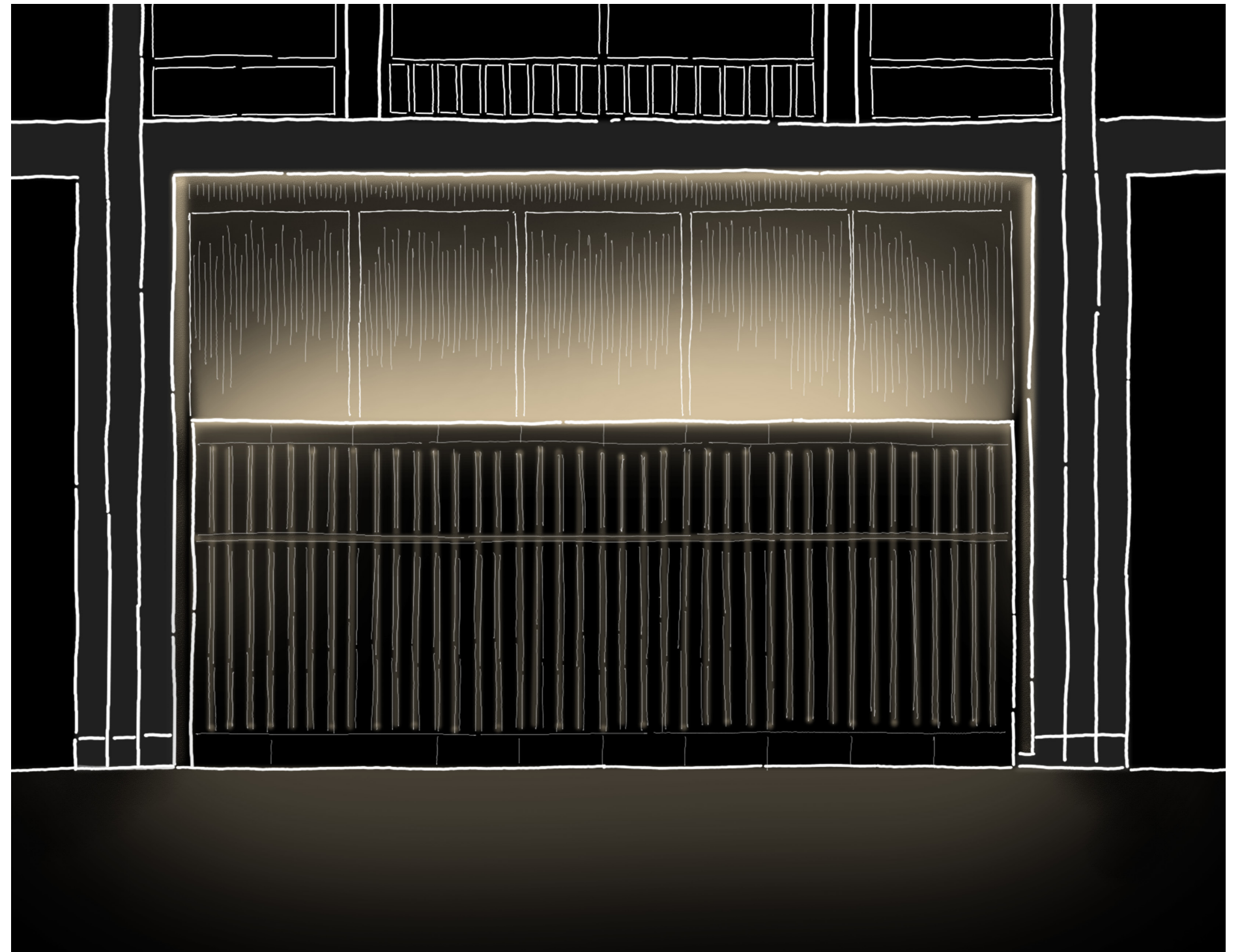
Ground Floor - Feature Shutter Lighting

Alterations include:

1. Amended Reference XJ arrangement.
2. Omitted feature flood lighting within loading bay.
3. Respecification of Reference XK linear luminaires to provide wash of illumination to feature facade detailing.



Stage 3 - Lighting Design.



Stage 4 - Proposed Lighting Design Amendments.

Fifth Floor - Terrace Bench & Planter Lighting

Alterations include:

1. Refence YB linear LED luminaire positions amended to provide footpath illumination and additional luminaires added to illuminate planters behind benches.
2. Reference YD, dual-head, spike mounted LED luminaire specification updated for improved efficacies and BREEAM Compliance. (LM/W).
3. IP Rated buried driver containment locations provisionally added.(To be confirmed).
4. Reference YE, Exterior Socket locations provisionally indicated.



Stage 3 - Lighting Design.

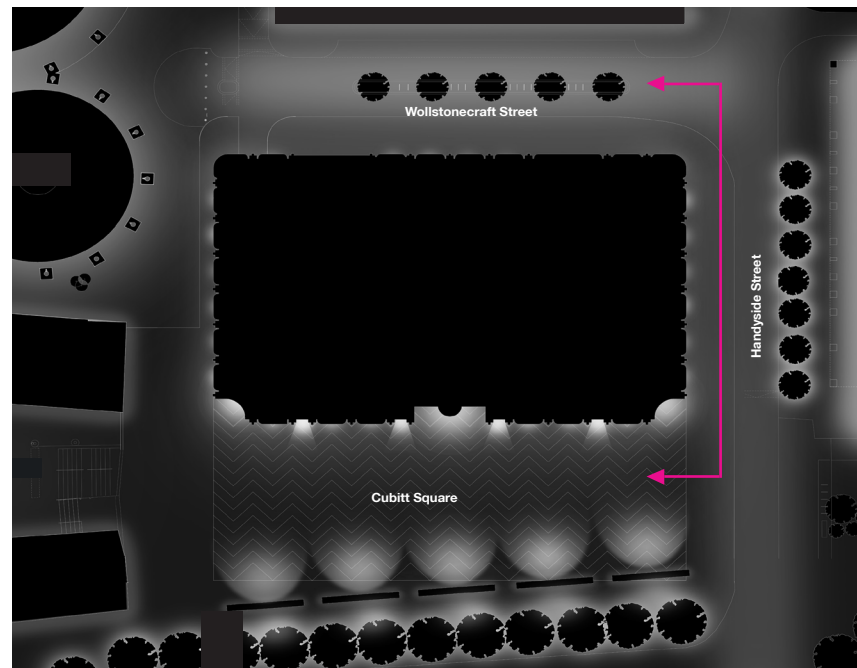


Stage 4 - Proposed Lighting Design Amendments.

North Elevation - Facade Lighting

Alterations include:

1. Respecification of Reference YD luminaires within fifth floor plants, for improved efficacies and BREEAM compliance. (LM/W).



Stage 3 - Lighting Design.

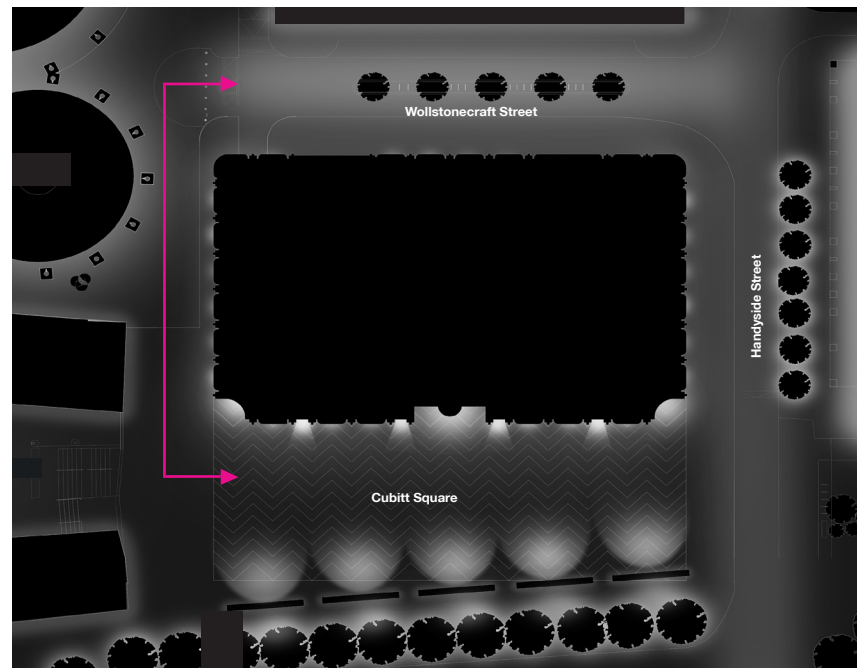


Stage 4 - Proposed Lighting Design Amendments.

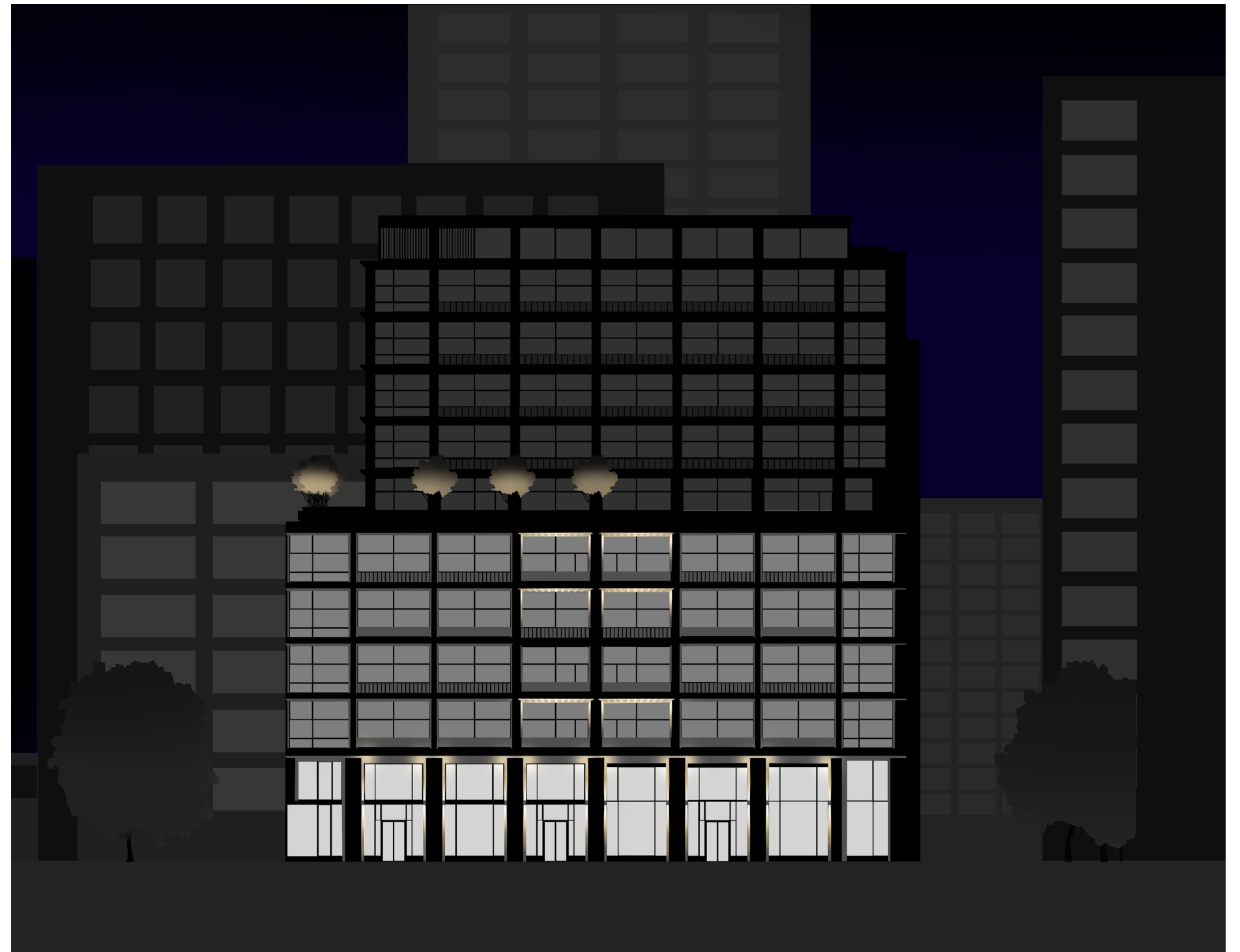
South Elevation - Facade Lighting

Alterations include:

1. Respecification of Reference YD luminaires within fifth floor plants, for improved efficacies and BREEAM compliance.



Stage 3 - Lighting Design.

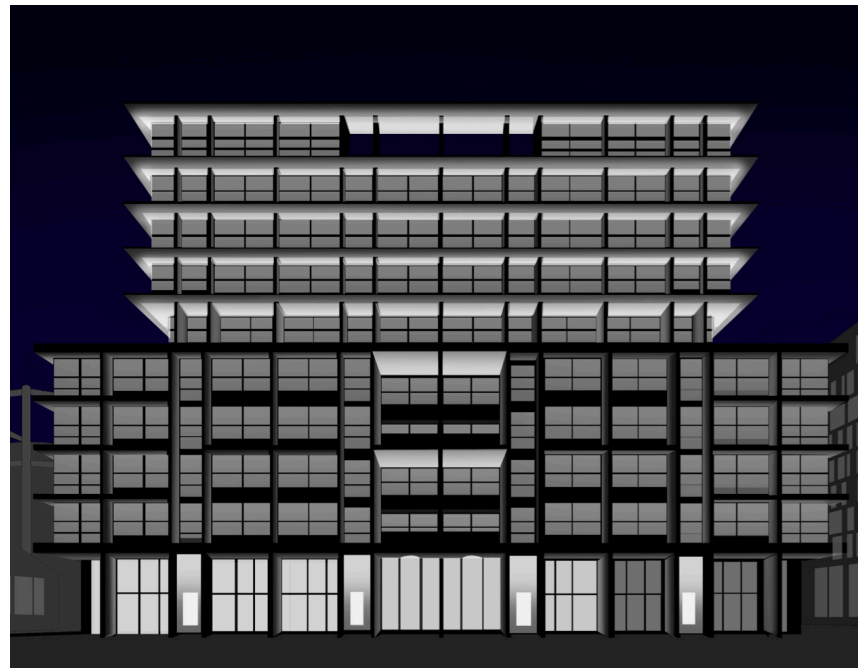


Stage 4 - Proposed Lighting Design Amendments.

East Elevation - Facade Lighting

Alterations include:

1. Amended Loggia lighting, to include respecified XB linear LED luminaires.
2. Omission of some Reference XG luminaires from Loggia Soffits.
3. Respecification of 'Crown' Lighting to Reference XJ, direct / indirect Luminaires.
4. Respecification of Reference XK linear luminaires to provide wash of illumination to soffit above entrance.



Stage 3 - Lighting Design.



Stage 4 - Proposed Lighting Design Amendments. (Includes References XA Inground Uplights Provisionally).

East Elevation - Facade Lighting Control



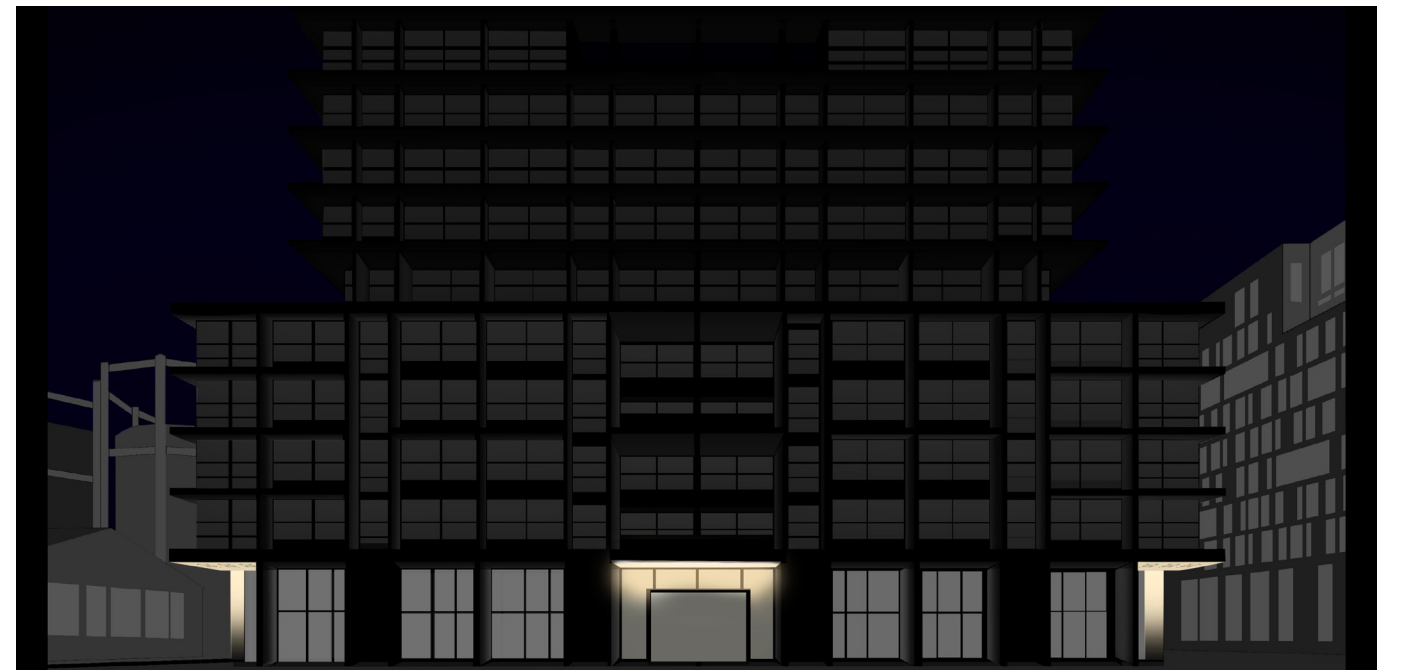
4PM - 6PM (Winter)



6PM - 9PM (Winter)



9PM - 11PM

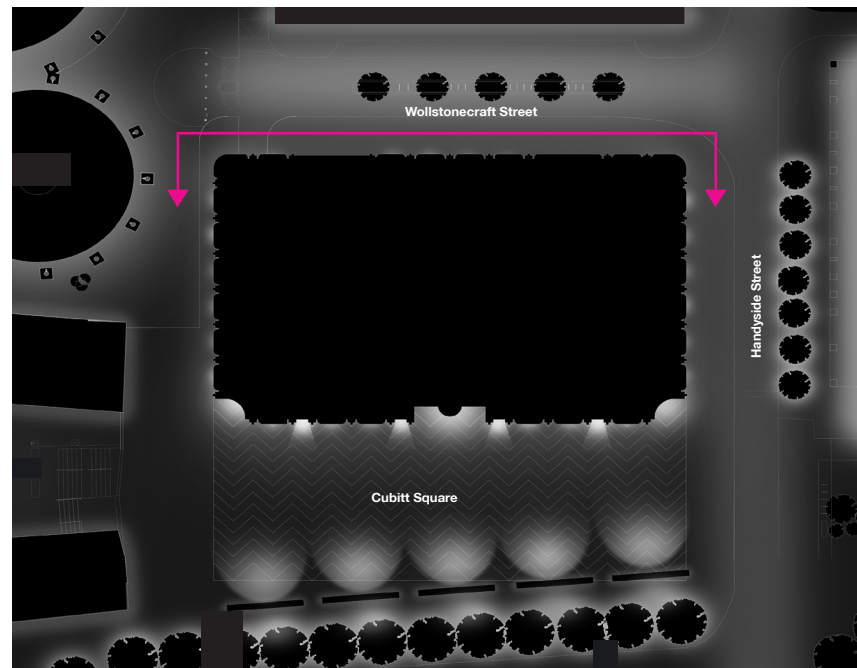


11PM - Dawn

West Elevation - Facade Lighting

Alterations include:

1. Amended Reference XJ arrangement.
2. Omitted feature flood lighting within loading bay.
3. Respecification of Reference XK linear luminaires to provide wash of illumination to feature shutter.



Stage 3 - Lighting Design.



Stage 4 - Proposed Lighting Design Amendments.