

to this drawing which may not be reproduced or copied without prior written consent.

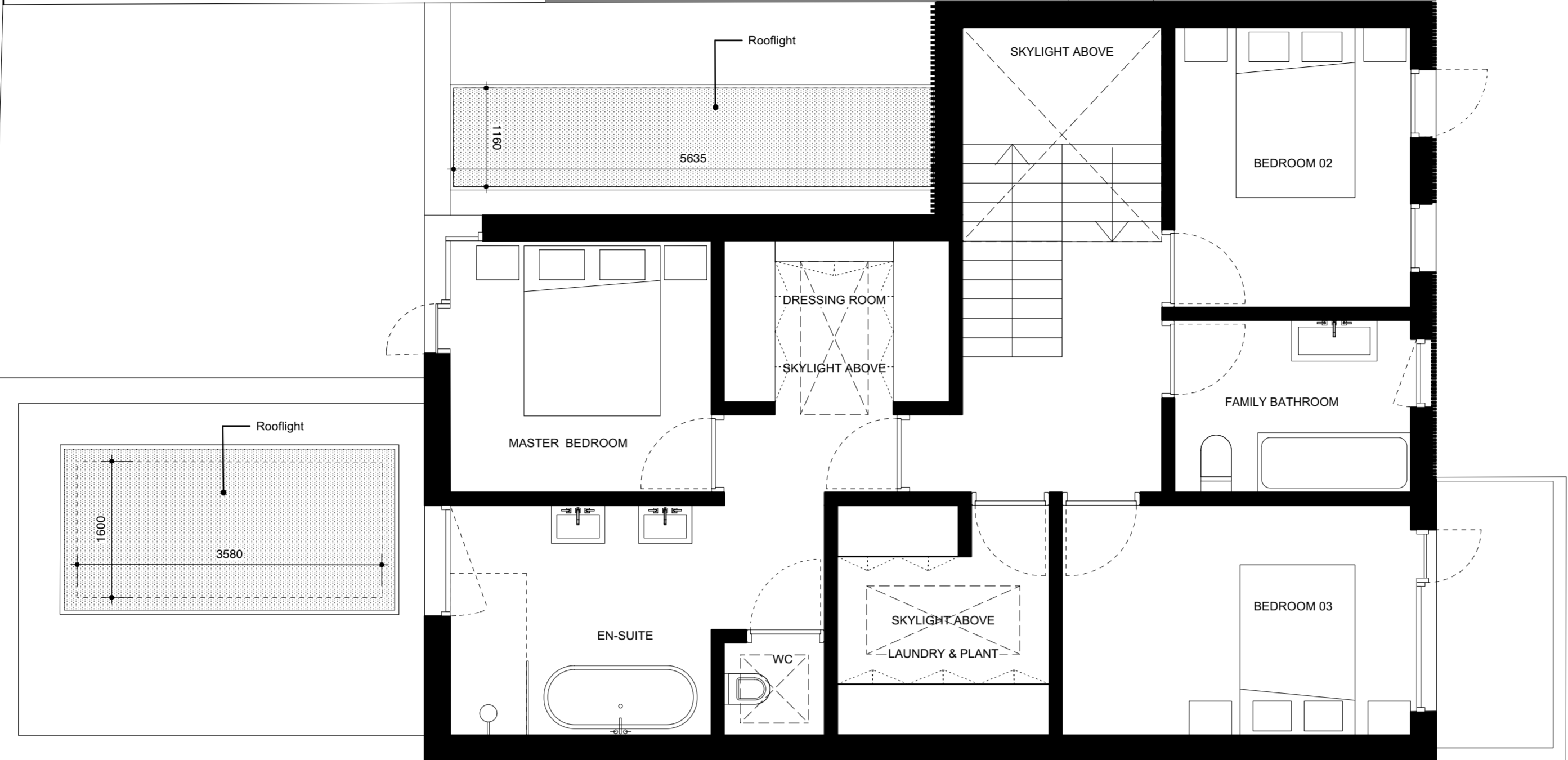
Rev	Date	Notes
-	-	-
A	27.05.15	General Revisions
B	04.06.15	General Revisions
C	16.06.15	Revised for client meeting
D	07.07.15	General Revisions
E	19.10.15	General Revisions
F	22.02.16	Changes following planning application refusal
G	NOV 2016	REVISIONS TO SCHEME FOR PLANNING
H	JAN 2017	Revised for Client Meeting
I	28.03.17	For Client
Rev	Date	Notes
J	17.07.07	For Client Review
K	11.07.17	Planning
L	11.09.17	Planning
M	03.10.17	Planning
N	23.01.19	Submitted for Planning
O	24.04.19	Scale Bar Amended for Planning

Title
Proposed First Floor Plan
Drawing Number
14107_101
Date
12.02.15
Purpose
Planning
Project
59 Camden Mews
Client
Charles Morin & Emilie Bellet

Threefold

ARCHITECTS

Great Western Studios, Studio 203
65 Alfred Road, London, W2 5EU
www.threefoldarchitects.com
info@threefoldarchitects.com
T 0208 969 2323
Threefold Architecture Ltd. Registered in England & Wales, Company No. 7080056, Registered Office 601 London Rd, Westcliff-on-Sea, Essex, SS0 9PE
Copyright © Threefold Architecture Ltd. 2011.



- REV Windows updated to show high-performance frames and exterior over-insulation. This results in slender visible frames on the exterior.
- REV A new topographic survey has been undertaken. The revised drawings, show this new survey information.

- REV Low level cupboards and glazing facing neighbour omitted and skylight(s) reduced in size, improving privacy and thermal performance.

- REV Skylight above stairs reduced in size, improving thermal performance. Other FF skylights also adjusted.
- REV Stairs adjusted, including headroom. Previous architects' drawings were not workable.

- REV Master bedroom window adjusted. Corner window omitted, improving thermal performance and privacy for neighbour to NE.
- REV Master bedroom enlarged 200mm SE and 200mm SW to allow adequate space around bed (not allowed for in previous architects' drawings).

- REV Kitchen skylight(s) reduced in size. Moved towards boundary to improve light distribution.

- REV Master ensuite bathroom layout adjusted

- REV Family bathroom layout adjusted

- REV Glass roof on bin store

NOTES

1. Use A3 panel dimensions only.
2. Do not scale from the drawing.
3. All dimensions and levels to be checked on site and any discrepancies to be reported to the lead designer immediately and actioned accordingly on any physical works.
4. To be used in conjunction with current versions of all project documents from design team members.
5. Structural and services information shown in architectural drawings are indicative only. Refer to consultant's drawings for details and verification.
6. All work and materials to be in accordance with current and applicable statutory legislation and relevant standards.

REV	DATE	DESCRIPTION	AUTHOR	CHECKER
P1	2020.04.24	Planning amendments	AM	CB

PROJECT
59 Camden Mews
STATUS
Planning
PACK
General arrangements
PROJECT DRAWING TITLE
Proposed first floor plan

SCALE
1:50

PROJECT
59 Camden Mews
DISCIPLINE
PHASE
PACK
DRAWING
STATUS
REV
114 A.P.1.101 P 1
KIN
hello@kincollective.co
London & South East: 033 0223 2046
South West: 033 0223 2047
KIN, Impact Brixton, 17a Electric Avenue,
Brixton, London SW9 8LA
6/10/2020