

All dimensions to be verified on site. Figured dimensions to take precedence to those scaled. Any areas indicated on this drawing are for guidance only, no responsibility is taken for their accuracy.

The drawing is the property of Applied Landscape Design Limited. Copyright is reserved by them and the drawing is issued on the condition that it is not copied, reproduced, retained or disclosed to any unauthorised person, other wholly or in part without the written consent in writing of Applied Landscapes.

© 2018 Applied Landscape Design Limited. All rights reserved.

CDM/H&S:

The works illustrated on this drawing have been reviewed against the Designers CDM Risk Register, document reference ALD816_RA901, significant risks are noted as:

Construction:

- Mechanical lifting of heavy materials onto terraces
- Working adjacent building facades on narrow ledges / terraces
- Working over public realm and highways
- Loading over cantilevered corners with strict parameters
- On site cutting of fine detail into natural stone pavers

Maintenance:

- Working over public realm and below others
- Cultivation over waterproofing layers and buried services
- Risk of working at height in strong winds

Demolition:

- Risk of void formers breaking down with disturbance

NOTES / KEY:

REFERENCE DRAWINGS/DOCUMENTS

KXC-P2-001-ALD816-L-91-005	5th Floor: Landscape GA
KXC-P2-001-ALD816-L-91-702	Typical Loggia Granite Paving Detail

REVISIONS

C01	STAGE 5 CONSTRUCTION ISSUE	02.03.20

no.

Issued

date

CLIENT:

ARGENT

CONTRACTOR:

KIER

LANDSCAPE ARCHITECT:

The Threshing Barn
Blignell Park Barns
Chesherton, Nr. Bicester
Oxfordshire, OX26 1TD
Tel: 01869 249776
Email: mail@appliedlandscape.co.uk

ALD
applied landscape design

PROJECT:

KING'S CROSS CENTRAL
BUILDING P2

DRAWING TITLE:

RESIN BOUND GRAVEL &
MOVEMENT JOINT INTERFACE
TYPICAL PLAN LAYOUT AND SECTION

drawn:

CW

checked:

KmJ

scale

1:10 @ A3

date:

21.09.2018

status:

CONSTRUCTION

xref file ref:

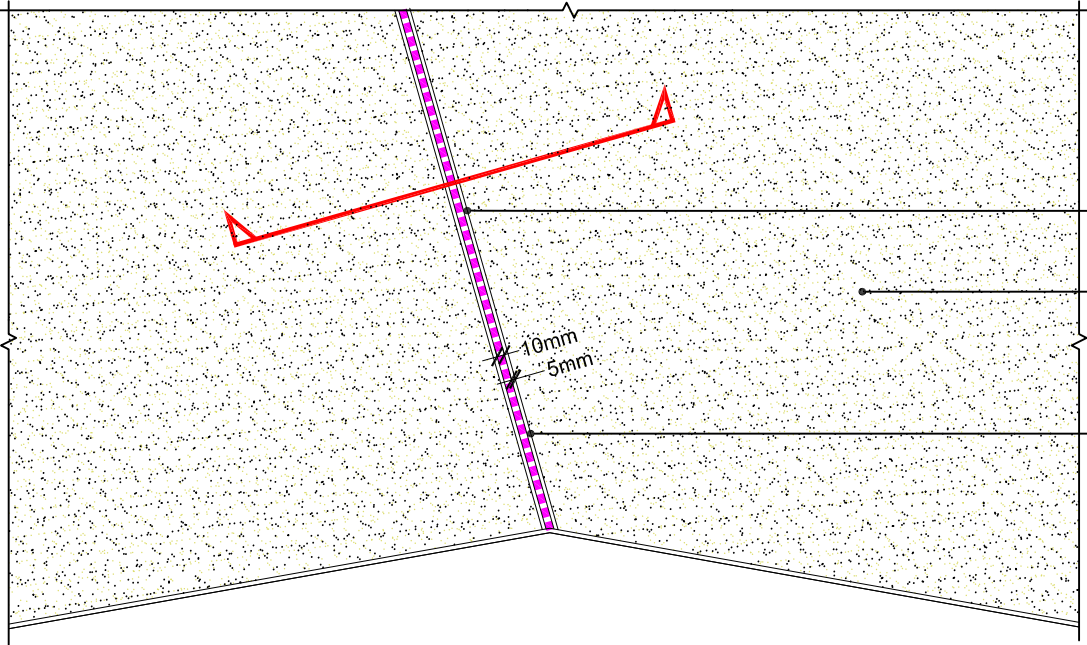
ALD816_LDbase

DRAWING NUMBER:

KXC-P2-001-ALD816-L-91-706

REVISION:

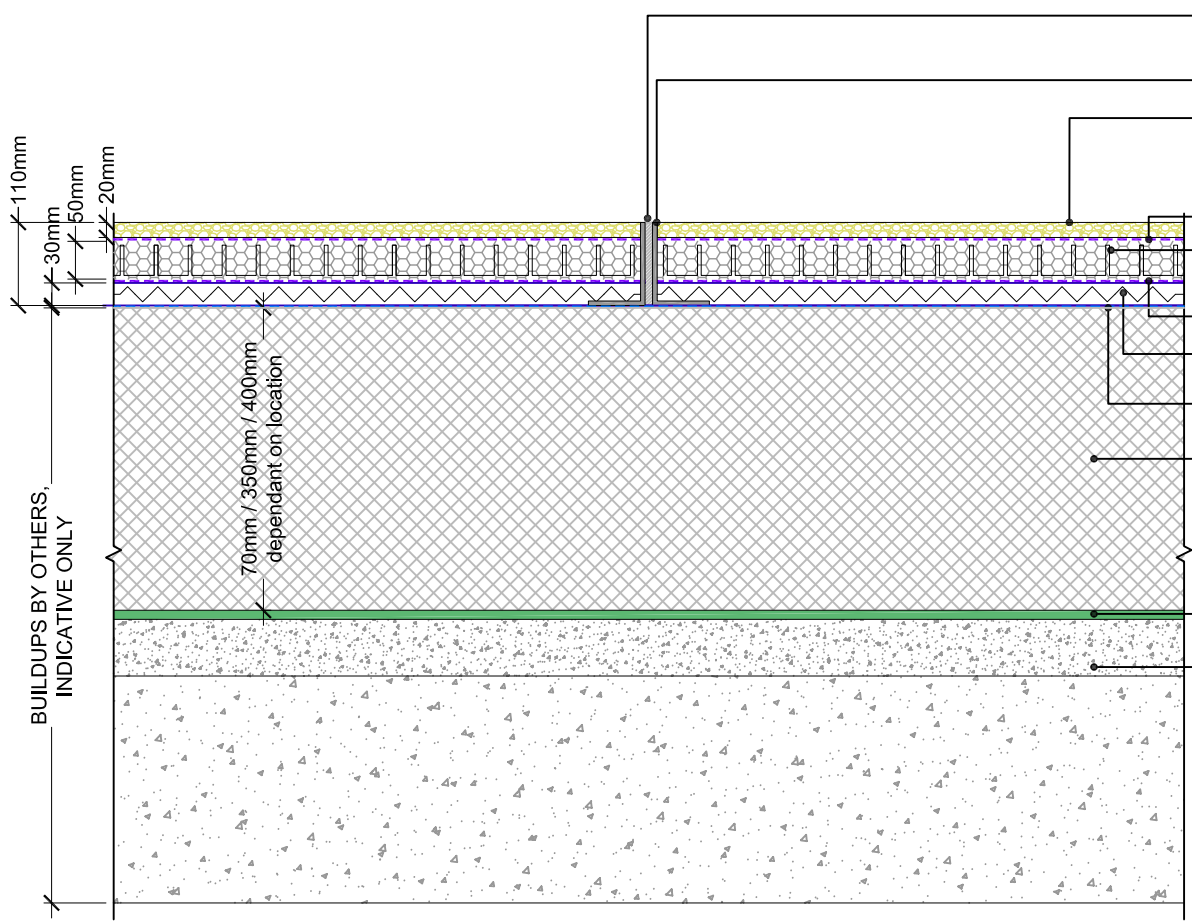
C01



- 10mm wide soft joint between metal edges
- Resin Bound Gravel
6mm Sterling Silver by SureSet or equivalent. TBC subject to sample review
- Edge type 3
5mm thick perforated aluminum edge by Kinley or equivalent to bound gravel surface finishes. Set flush with adjacent surface finishes
Refer to ALD dwg. no. 91-110 for details

006a

DETAIL PLAN OF RESIN BOUND GRAVEL, METAL EDGES & SOFT JOINT
SCALE: 1:10 @ A3



- 10mm wide soft joint between metal edges
- Edge type 3 - refer to ALD dwg. no. 91-110 for details
- Resin Bound Gravel. 6mm Sterling Silver by SureSet or equivalent
- Filtration geotextile layer
- Ecogrid E50 or equivalent filled with loose gravel
- Filtration geotextile layer
- Drainage mat Versicell 3050 or equivalent
- Waterproofing by others
- Rigid thermal insulation system by others
- Protection layer by others
- Structural slab by others

006b

DETAIL SECTION THROUGH RESIN BOUND GRAVEL, METAL EDGES & SOFT JOINT
SCALE: 1:10 @ A3