

B

C

D

E

F

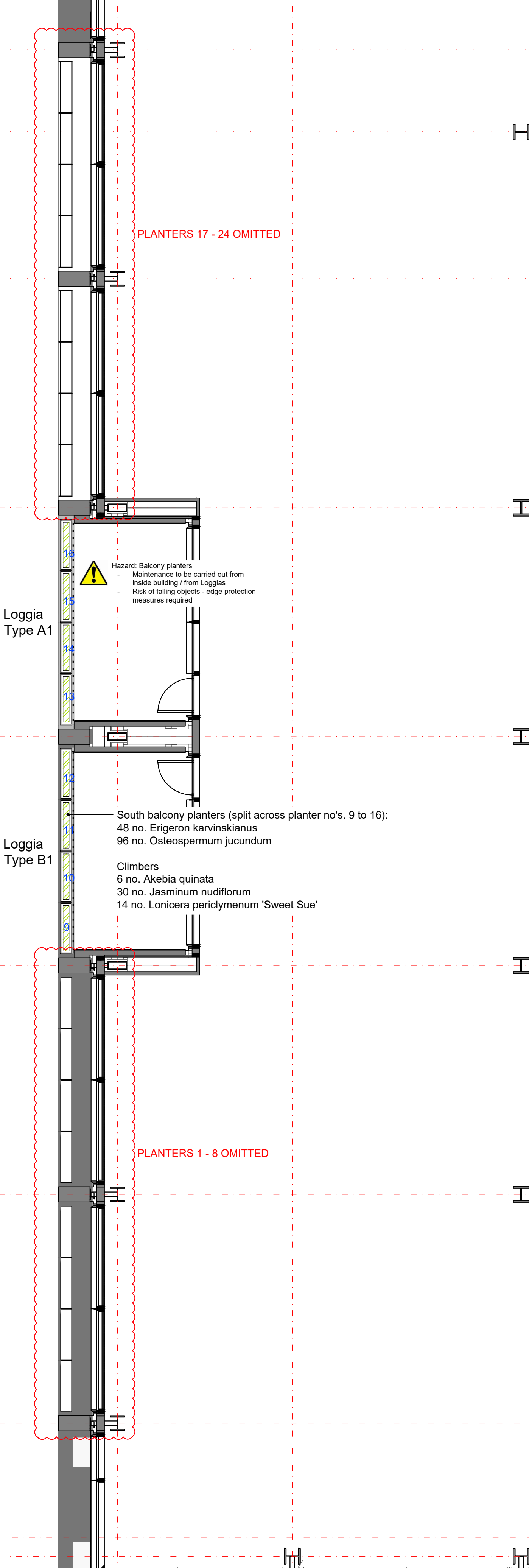
G

H

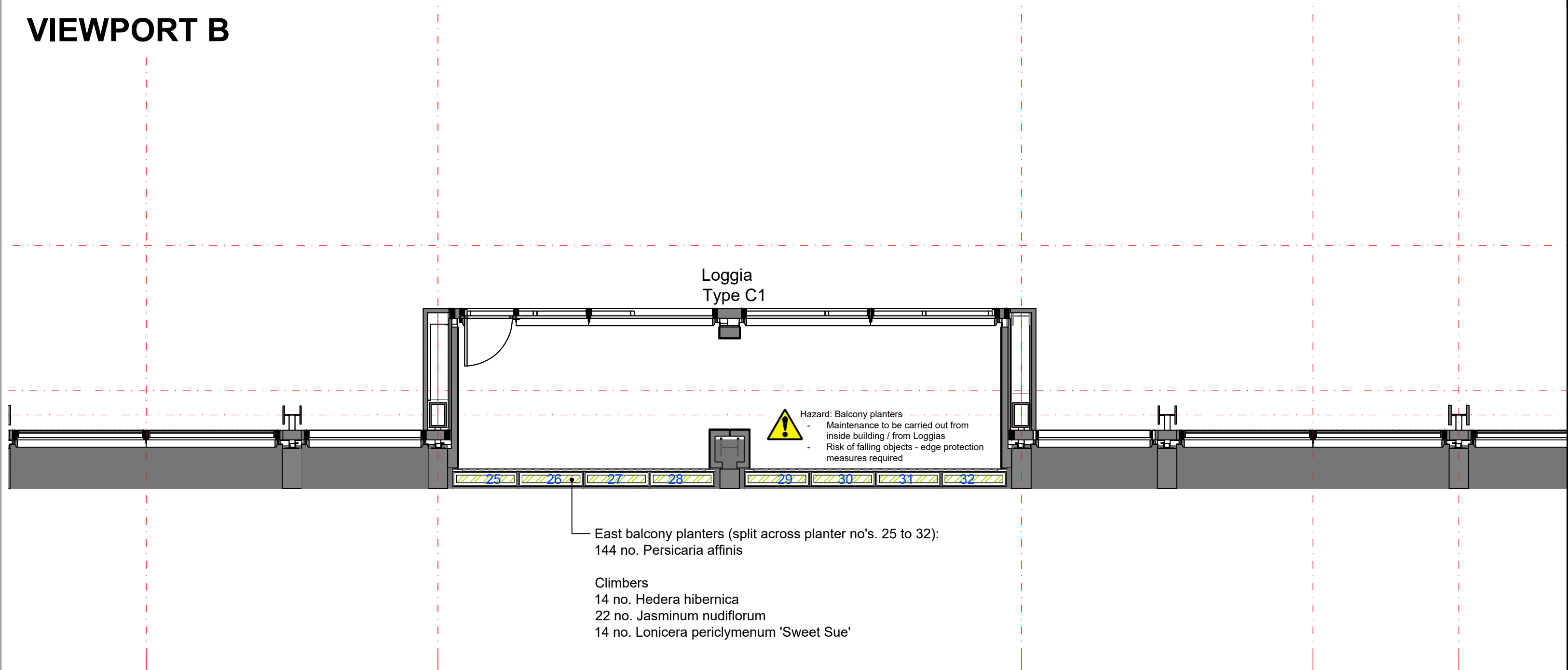
J

J1

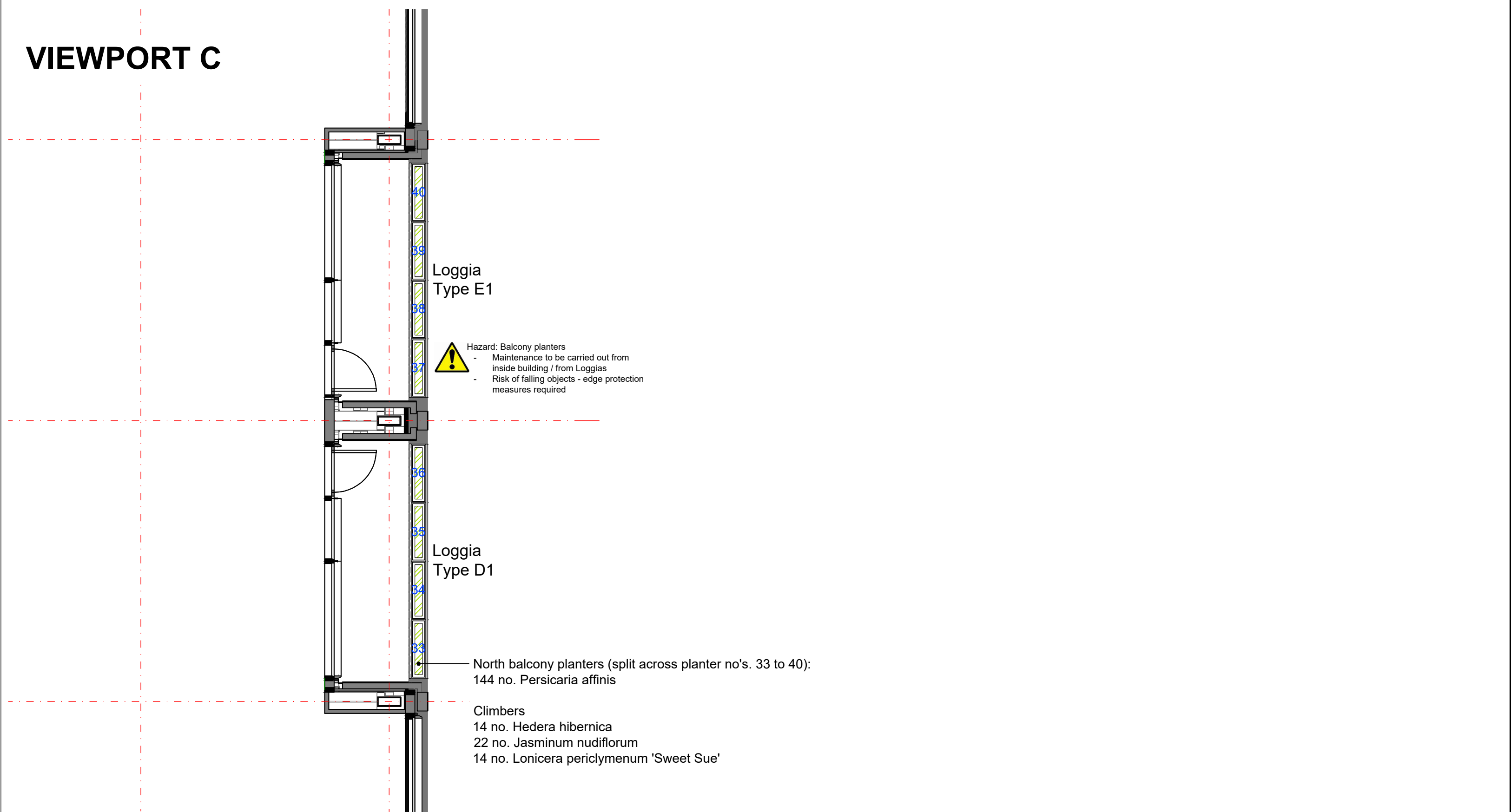
VIEWPORT A



VIEWPORT B



VIEWPORT C



NOTE: THIS SCHEDULE COVERS PLANTS ACROSS ALL LOGGIAS TO LEVELS 1, 2, 3, 4 & 9 (REFER TO DRAWINGS 91-411, 91-412, 91-413, 91-414, & 91-419)

PLANT SCHEDULE - LOGGIAS

Perennials	Specification	No.
Erigeron karvinskianus	1L, container grown	144
Osteospermum jucundum	1L, container grown	288
Persicaria affinis	1L, container grown	936
18no. groundcover plants to be planted per planter		

Climbers	Specification	No.
Akebia quinata	3L, container grown	18
Hedera hibernica	3L, container grown	91
Jasminum nudiflorum	3L, container grown	233
Lonicera periclymenum 'Sweet Sue'	3L, container grown	119

All dimensions to be verified on site. Figured dimensions to take precedent to those scaled. Any areas indicated on this drawing are for guidance only, no responsibility is taken for their accuracy.

The drawing is the property of Applied Landscape Design Limited. Copyright is reserved by them and the drawing is issued on the condition that it is not copied, reproduced, retained or disclosed to any unauthorized person, either wholly or in part without the written consent in writing of Applied Landscapes.

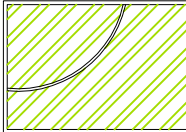
© 2018 Applied Landscape Design Limited. All rights reserved.

CDM/H&S:

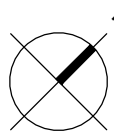
The works illustrated on this drawing have been reviewed against the Designers CDM Risk Register, document reference KXC-P2-001-ALD816-L-91-001, significant risks are noted as:

- Construction:
- Mechanical lifting of heavy materials onto terraces
  - Working Adjacent building facades on narrow ledges / terraces
  - Working above public realm and highways
  - Loading over cantilevered corners with strict loading parameters
  - On site cutting of the detail into natural stone pavers
- Maintenance:
- Working above public realm and highways and below others
  - Cultivation over waterproofing layers and buried services
  - Risk of working at height in strong winds
  - Balcony planter maintenance - edge protection
- Demolition:
- Risk of void formers breaking down with disturbance

NOTES / KEY:



Proposed ornamental planting within Loggia balconies  
Refer to schedule for details



REFERENCE DRAWINGS/DOCUMENTS

KXC-P2-001-ALD816-L-91-001	1st FLOOR LANDSCAPE GENERAL ARRANGEMENT PLAN

REVISIONS

no.	issued	date

C01	STAGE 5: CONSTRUCTION ISSUE	12.02.2020
P02	STAGE 4: CP ISSUE	05.10.18

no.	issued	date
-----	--------	------

CLIENT: ARGENT

CONTRACTOR: KIER

LANDSCAPE ARCHITECT:



The Threshing Barn, Bignell Park  
Barns, Chesterton, Nr. Bicester,  
Oxfordshire OX26 1TD  
Tel: 01869 249776  
Fax: 01869 327513  
Email: mail@appliedlandscape.co.uk

PROJECT: KING'S CROSS CENTRAL: BUILDING P2

ARCHITECT: ALLFORD HALL MONAGHAN MORRIS

DRAWING TITLE:

1st FLOOR LOGGIAS  
PLANTING PLAN

drawn:	checked:
HQ	KmJ
scale:	date:
1:75 @ A1	05.10.2018
status:	xref file ref:
CONSTRUCTION	ALD816_PLbase-1st-floor

DRAWING NUMBER:	REVISION:
KXC-P2-001-ALD816-L-91-411	C01

ORIGINAL A1 SIZE SHEET