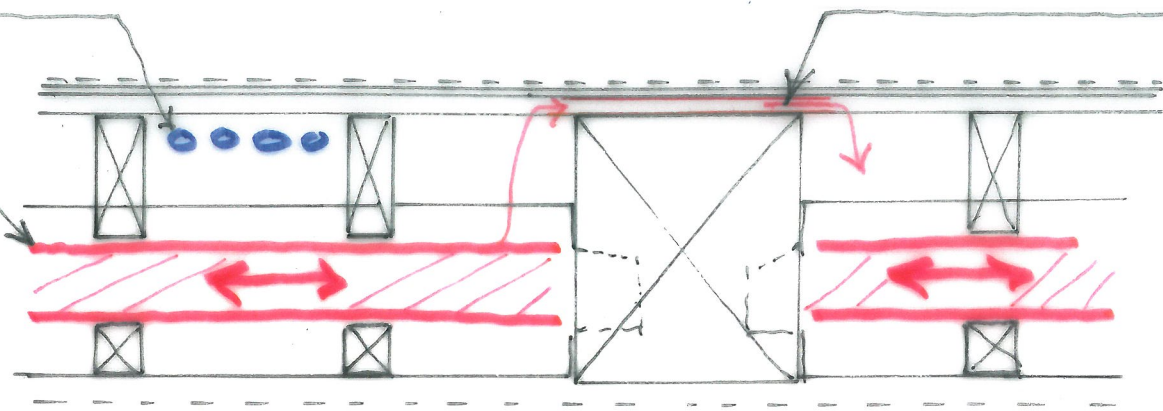


SERVICES ZONE
PARALLEL TO JOISTS.

SERVICES ZONE
BETWEEN LULLING
JOISTS AND
FLOOR JOISTS.



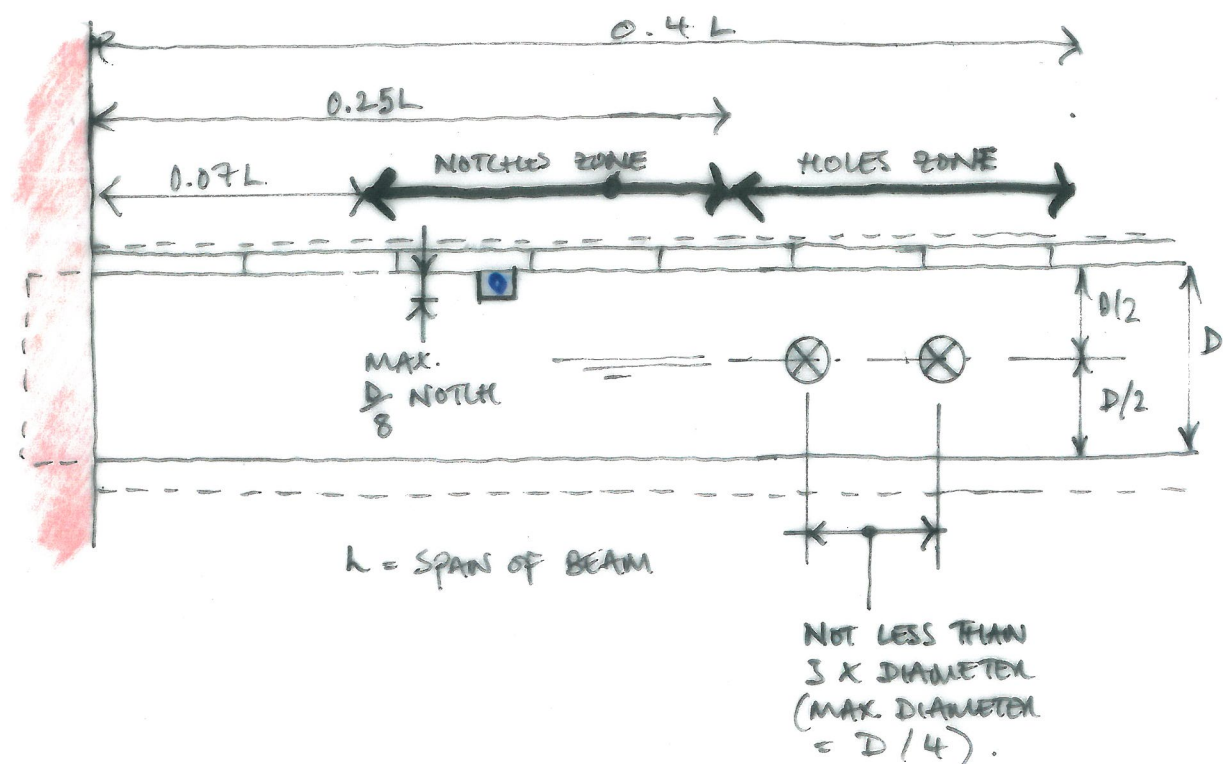
NO SIGNIFICANT SERVICES SHOULD CROSS
PRIMARY TIMBER BEAMS. WHERE SINGLE
SMALL DIAMETER PIPE NEED TO PASS
PRIMARY BEAMS LOCALLY, PIPES TO
RUN OVER BEAMS IN
DEPTH OF FINISHES -
ALTERNATIVELY, PIPES TO
FOLLOW EXISTING
SERVICES ROUTES.

notes

1. THIS DRAWING IS TO BE READ IN CONTINUATION WITH ALL RELEVANT ARCHITECTS & ENGINEERS DRAWINGS & SPECIFICATIONS.
2. SERVICES ROUTES AND INTEGRATION WITH FLOORS ARE TO BE CONFIRMED WITH M&E ENGINEER FOLLOWING EXPOSURE OF FLOOR ARRANGEMENTS. ALL NOTICING TO BE AGREED WITH S.E.

FOR INFORMATION ONLY

1. SERVICES STRATEGY - TYPICAL FLOOR



- SERVICES TO RE-USE EXISTING ROUTES WHERE POSSIBLE
- NOTCHING OF FLOOR BEAMS TO BE AVOIDED WHERE POSSIBLE AS SHOWN ABOVE FOR PRIMARY BEAMS.

2. SERVICES STRATEGY - SINGLE JOISTED FLOOR

24.8.19	ISSUED AT TENDER	LK
17.7.18	ISSUED FOR INFORMATION	LK
job BRITISH MUSEUM No. 38 RUSSELL SQUARE		
title SERVICES INTEGRATION		
drawn LK	checked FW	
date July '19	scale (original - A3) 1:10	

Alan Baxter

75 Cowcross Street London EC1M 6EL
tel: 020 7250 1555
email: aba@alanbaxter.co.uk
www.alanbaxter.co.uk

drg. no. 1756/702/096	rev. -
---------------------------------	-----------