

# PANTHER HOUSE AND 156-164 GRAYS INN ROAD

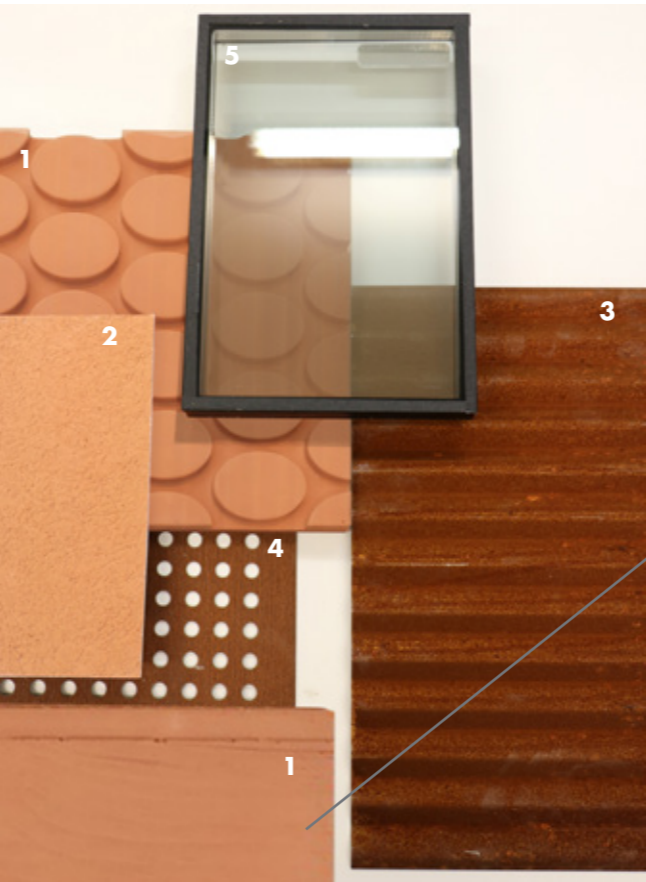
## MATERIALS

### Grays Inn Road



#### Materials Palette

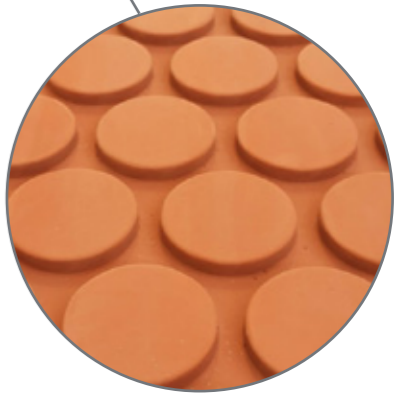
- 1. Coloured concrete.** Textured concrete with circles to planters of Grays Inn Road and balconies of Brain Yard Elevations. Shuttered Concrete to Grays Inn Road Elevation.
- 2. Terracotta Render.** Facade finish for rear of Grays Inn Road Building (Brain Yard Elevation).
- 3. Corrugated Weathered Steel.** Cladding the upper storey of the Grays Inn Road Building, interpreting mansard roofs of the surroundings.
- 4. Perforated Weathered Steel.** Shown with regular perforations, though these will be irregular as per the image shown.
- 5. Frameless Solar Glazing.**



Coloured Concrete Rainscreen Panel with Shuttered Finish - Detailed View.



Proposed pattern for the weathered steel coloured perforated flat panels.



Textured Coloured Concrete - Detailed View.

# PANTHER HOUSE AND 156-164 GRAYS INN ROAD

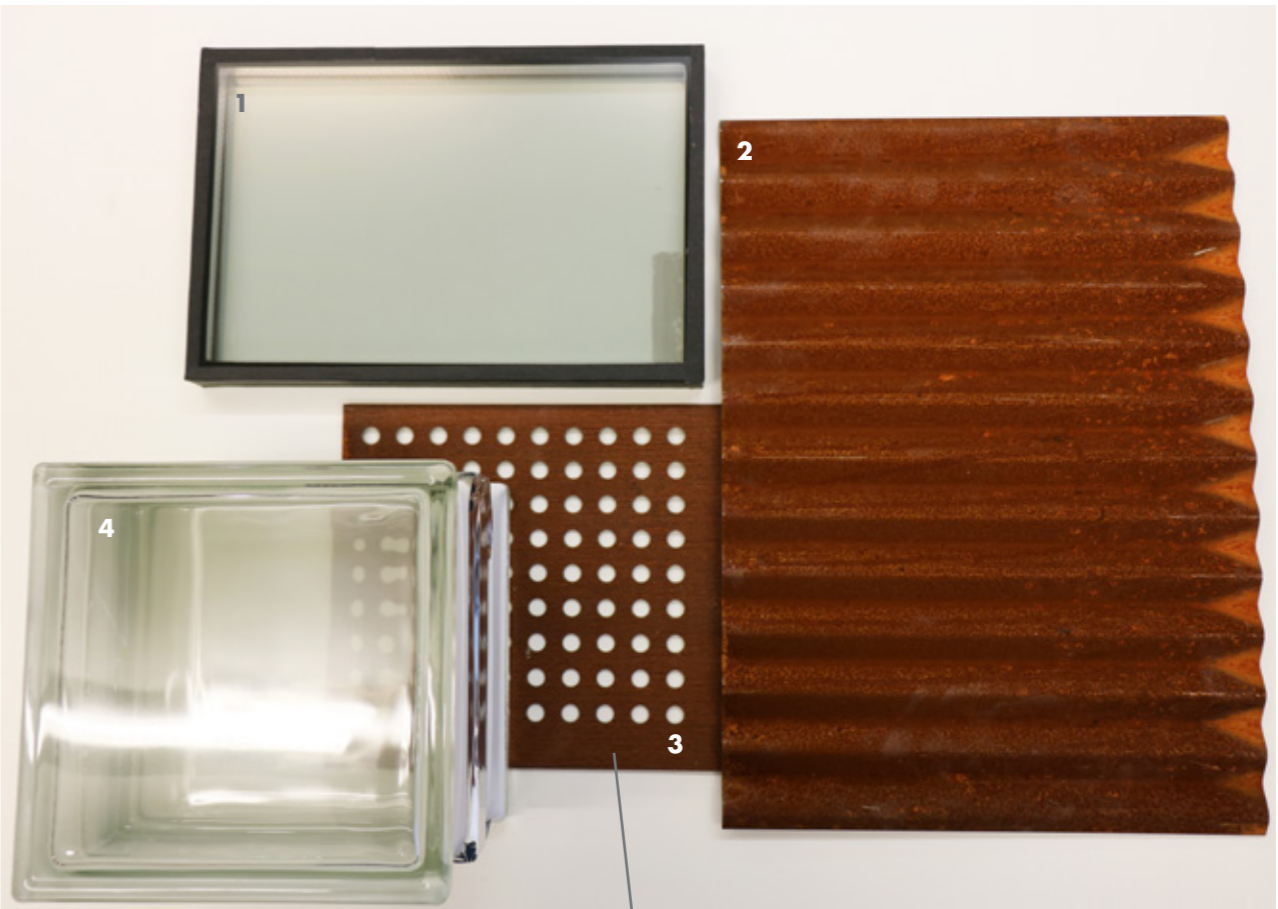
## MATERIALS

### Panther House One and Two



#### Materials Palette

- 1. Solar Glazing.** Separating the weathered steel roof top boxes from the existing fabric of Panther House One and Two.
- 2. Corrugated Weathered Steel.** Cladding the roof top boxes of Panther House One and Two to all elevations bar Panther Courtyard.
- 3. Perforated Weathered Steel.** Shown with regular perforations, though these will be irregular as per the images shown. Cladding the Panther Courtyard facades of Panther House One and Two.
- 4. Glass Bricks.** Stair core of Panther Two.

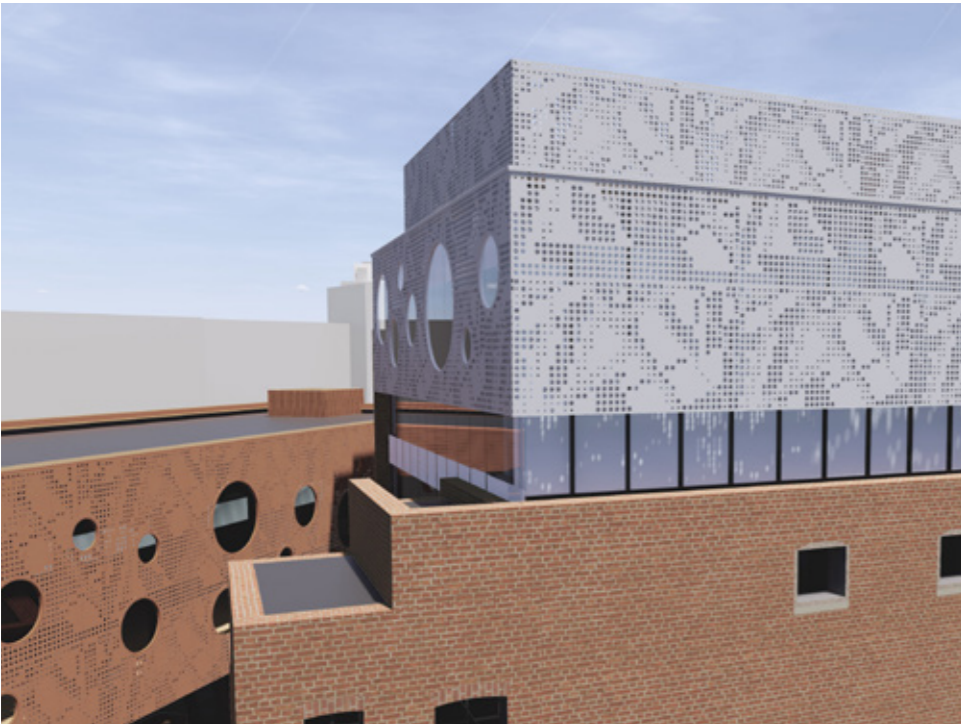
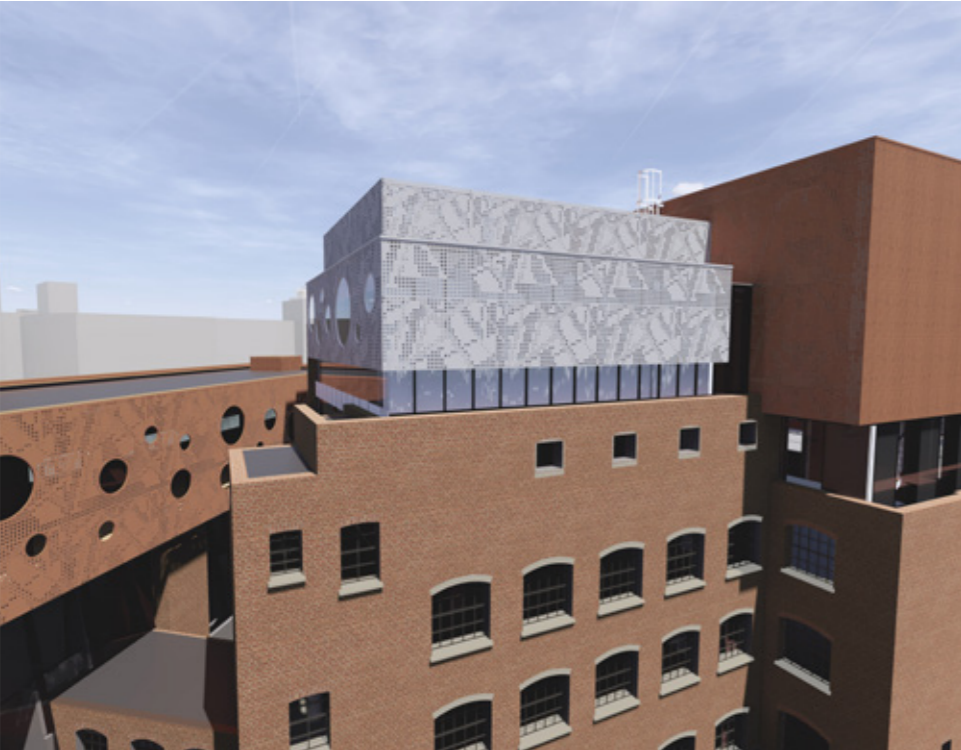


Proposed pattern for the weathered steel coloured perforated flat panels.

# PANTHER HOUSE AND 156-164 GRAYS INN ROAD

## MATERIALS

### Panther House Three



#### Materials Palette

- 1. Solar Glazing.** Separating the powder coated steel roof top boxe from the existing fabric of Panther House Three.
- 2. Perforated Powder Coated Steel to RAL 7035.** Cladding the roof top box (pelmet and plant shading) of Panther House Three.

