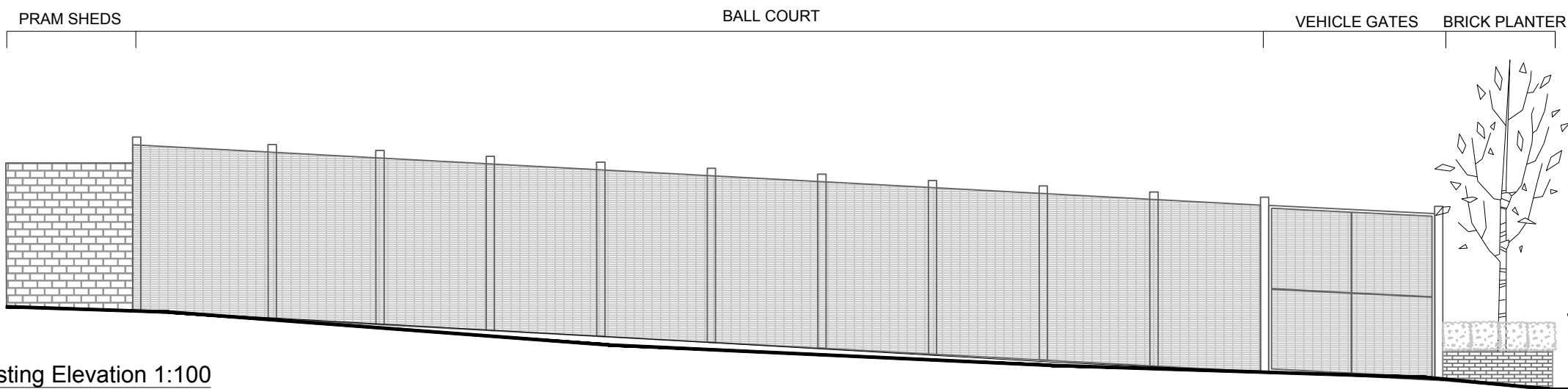
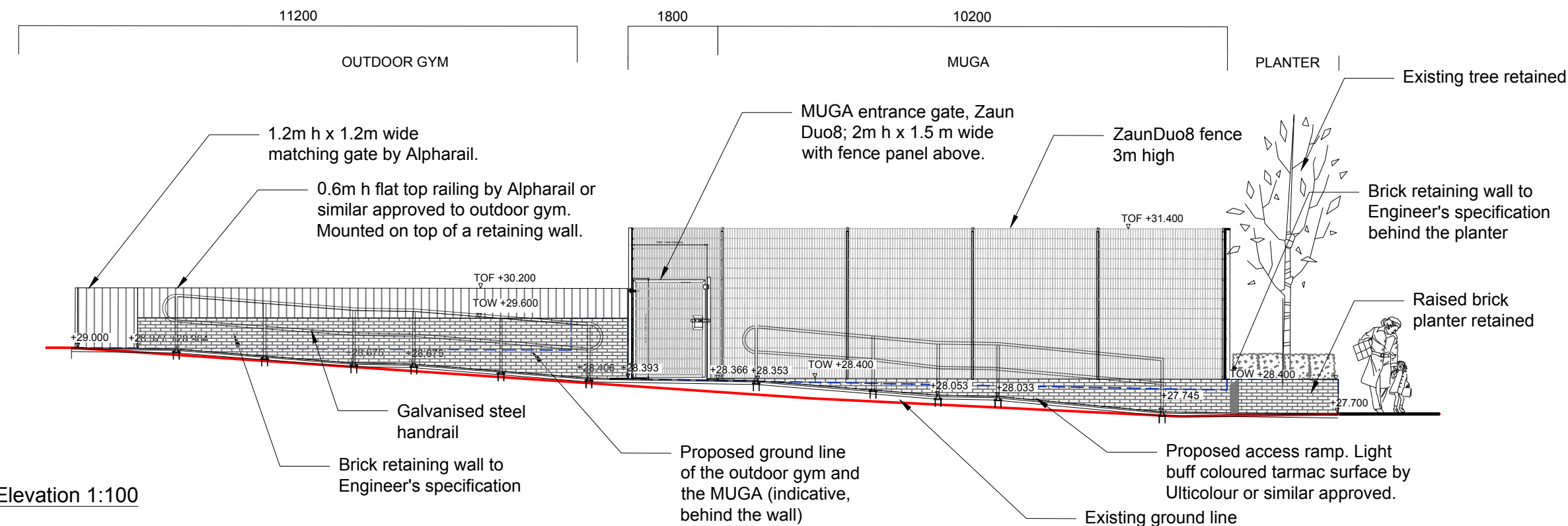


Location Plan 1:500@A3



Existing Elevation 1:100



Proposed Elevation 1:100

KEY

- Existing tree retained and protected according to the BS5837:2012.
 - New shrub and perennial planting in raised planters. Topsoil to BS 3882:2015. Depth min. 600 mm.
 - New surface to MUGA: new macadam ball court surfacing with non-slip heavy duty acrylic coating and acrylic line markings.
 - Light buff coloured tarmac surface to the ramp by Ulticolour or similar approved.
 - Steps: Marshalls Perfecta chamfered natural concrete treads and risers 400x400x50mm, cut to size, with inserted contrasting visibility strips.
 - Handrail to steps and ramp: galvanised and powder coated steel to RAL9005 (jet black).
 - Marshalls corduroy hazard warning paving slabs to steps and ramp. Colour: Dark Grey (TBC)
 - New 1.2m h flat top metal railings by Alpharail or similar. Galvanised and powder coated to RAL9005 (jet black).
 - New 3m h Zaun Duo8 Sports Fencing to east, south and west elevations to the ball courts. Galvanised and powder coated Dark Blue.
 - New metal gates, width and height as shown on the drawing. Galvanised and powder coated to match fence panels.
 - Brick retaining walls to structural engineer's details.
 - New metal edging to resin bound gravel path. Flexible 50 mm h Flexible AluExcell by Kinley or similar approved.
 - Slot drain by ACO or similar approved. Indicative location TBC; to drainage engineer's details
 - Outdoor gym equipment by The Great Outdoor Gym Company
- Existing levels +24.8 Proposed levels +4.27

Rev	Description	Drawn	Check	Appr	Date
A	Update to ramp design, retention of existing raised planter	MF			21.04.20

Groundwork London
12 Baron Street
London N1 9LL
Tel: 020 7239 1280
Fax: 020 7278 1515
www.groundwork.org.uk/London



Project: HS2 Improvements
Client: LB Camden

Drawing Title
Ramp elevation

Drawn: Check: Appr: Date: Scale at A3:
MF LC AP 05/12/2019 1:100

Status: **PLANNING**

Drawing No: CA030_P_01AHM_006
Revision: A