

1814/4/6/detail: cupboard doors

1814/4/1/detail: cupboards and shelves

1814/4/3/detail: replica f.r. half glazed door leaf

1814/4/2/detail: fire resisting glazed screen

1814/4/2/detail: replica chair rail

1814/4/2/detail: replica skirting

1814/4/8/detail: two part cornice

1814/4/5/detail: replica half glazed f.r. door leaf

1814/4/4/detail: replica door leaf

1814/4/9/detail: three part cornice

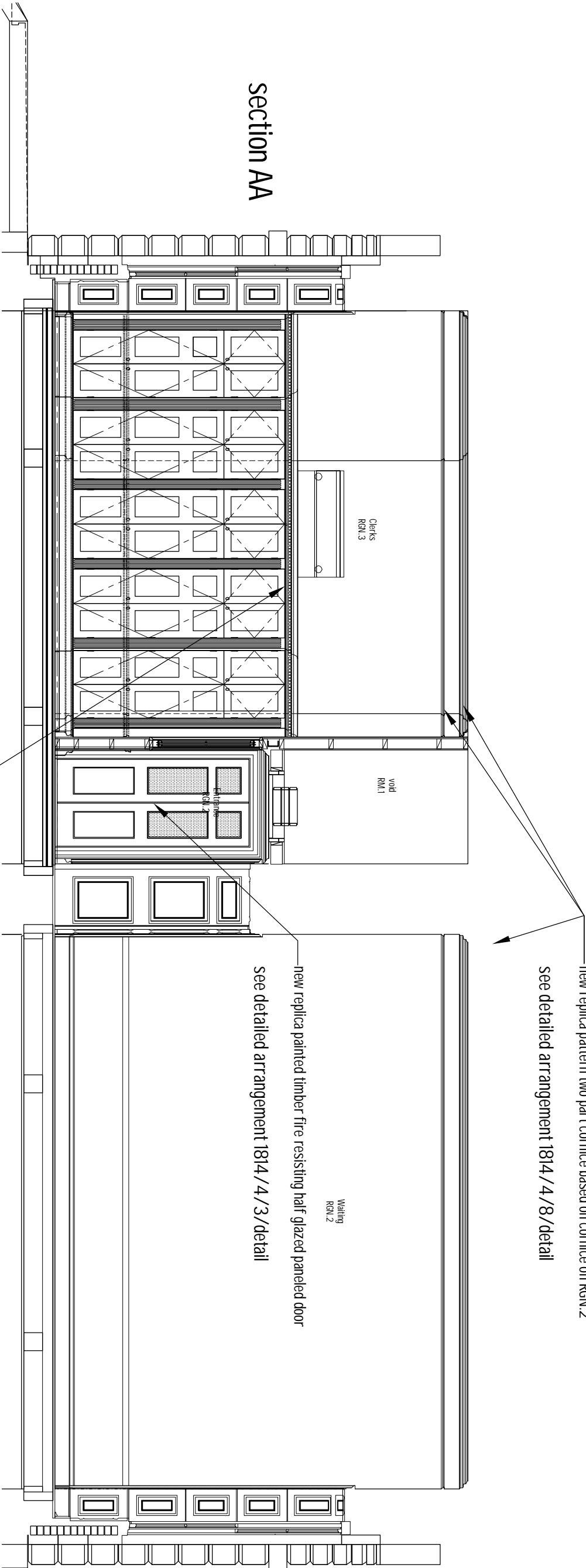
1814/4/7/detail: replica window recess apron panels

lbc

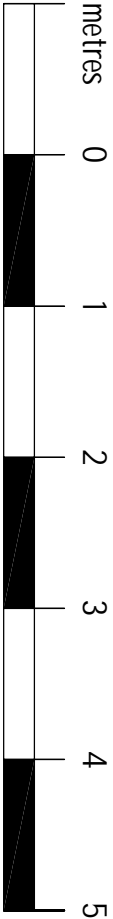
GENERAL ARRANGEMENTS		SCALE:	1:100@A3
SECTIONS		DATE:	APR 20
LOCATIONS		DRAWN:	NHT
ALTERATIONS:			
GROUND PAIR, NORTH AND SOUTH, 4 STONE BUILDINGS, LINCOLN'S INN, LONDON, WC2A 3XT			
THE CHAMBERS OF GEORGE BOMPAS QC			
NICHOLAS HILL THOMPSON			
8 PALEWELL PARK	LONDON	SW14 8JG	TEL 020 8876 0886
			CHARTERED ARCHITECT
			FACS 020 8255 4082

ground floor
north & south





section AA



new replica pattern two part cornice based on RGN.2

see detailed arrangement 1814/4/8/detail

new replica painted timber fire resisting half glazed paneled door

see detailed arrangement 1814/4/3/detail

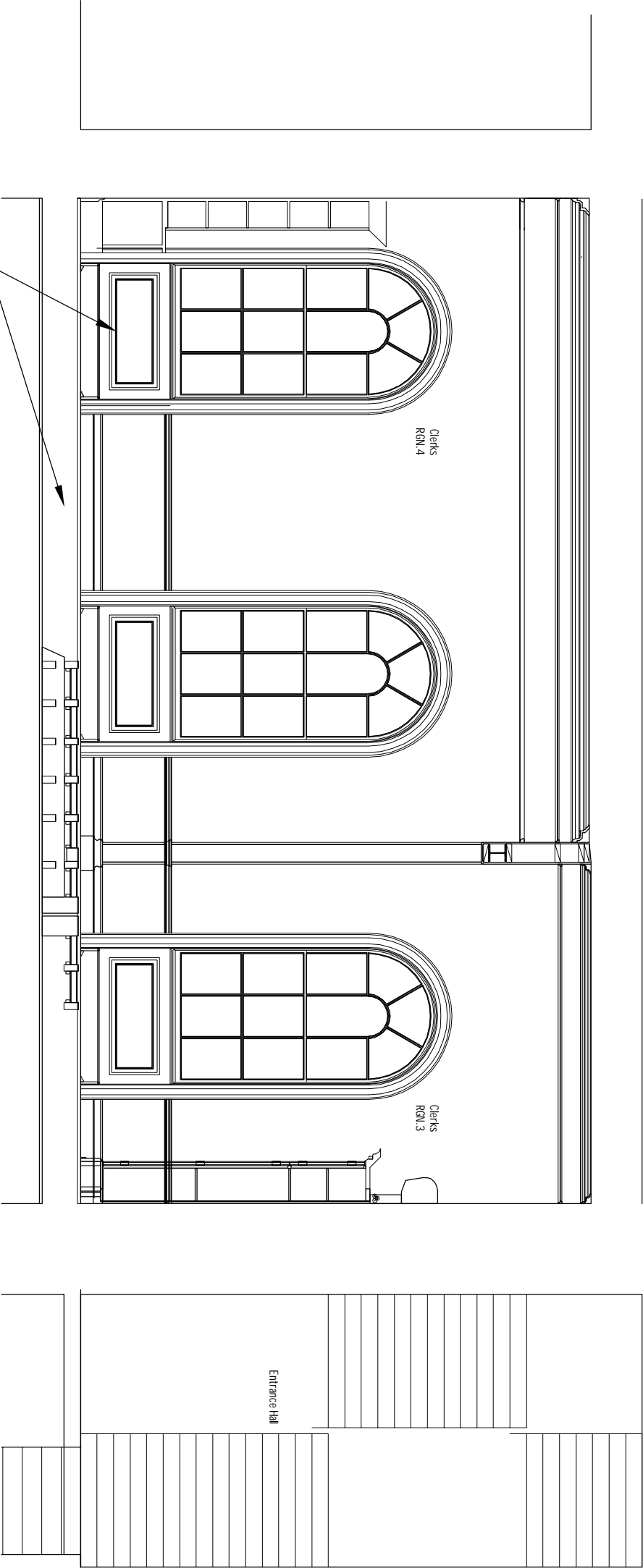
install altered/extended shelves and cupboards

see detailed arrangement 1814/4/1/detail

lbc

GENERAL ARRANGEMENTS		SCALE:	1:50@A3
SECTION		DATE:	APR 20
LOCATION		DRAWN	NHT
ALTERATIONS			
GROUND PAIR NORTH AND SOUTH, 4 STONE BUILDINGS, LINCOLN'S INN, LONDON, WC2A 3XT			
THE CHAMBERS OF GEORGE BOMPAS QC			
NICHOLAS HILL THOMPSON			
8 PALEWELL PARK			
LONDON	SW14 8JG	TEL	020 8876 0886
CHARTERED ARCHITECT			
FACSS 020 8255 4082			

section BB



restore the apron paneling under the window and shutters to match the historic paneling to adjacent window openings

see detailed arrangement 1814/4/7/detail

metres

0 1 2 3 4 5

lbc

GENERAL ARRANGEMENTS

SECTIONS

LOCATION

ALTERATIONS

GROUND PAIR NORTH AND SOUTH, 4 STONE BUILDINGS, LINCOLN'S INN, LONDON, WC2A 3XT
THE CHAMBERS OF GEORGE BOMPAS QC

NICHOLAS HILL THOMPSON

18 PALEWELL PARK

SCALE: 1:50@A3

DATE: APR 20

DRAWN: NHT

1814/3/11/detail

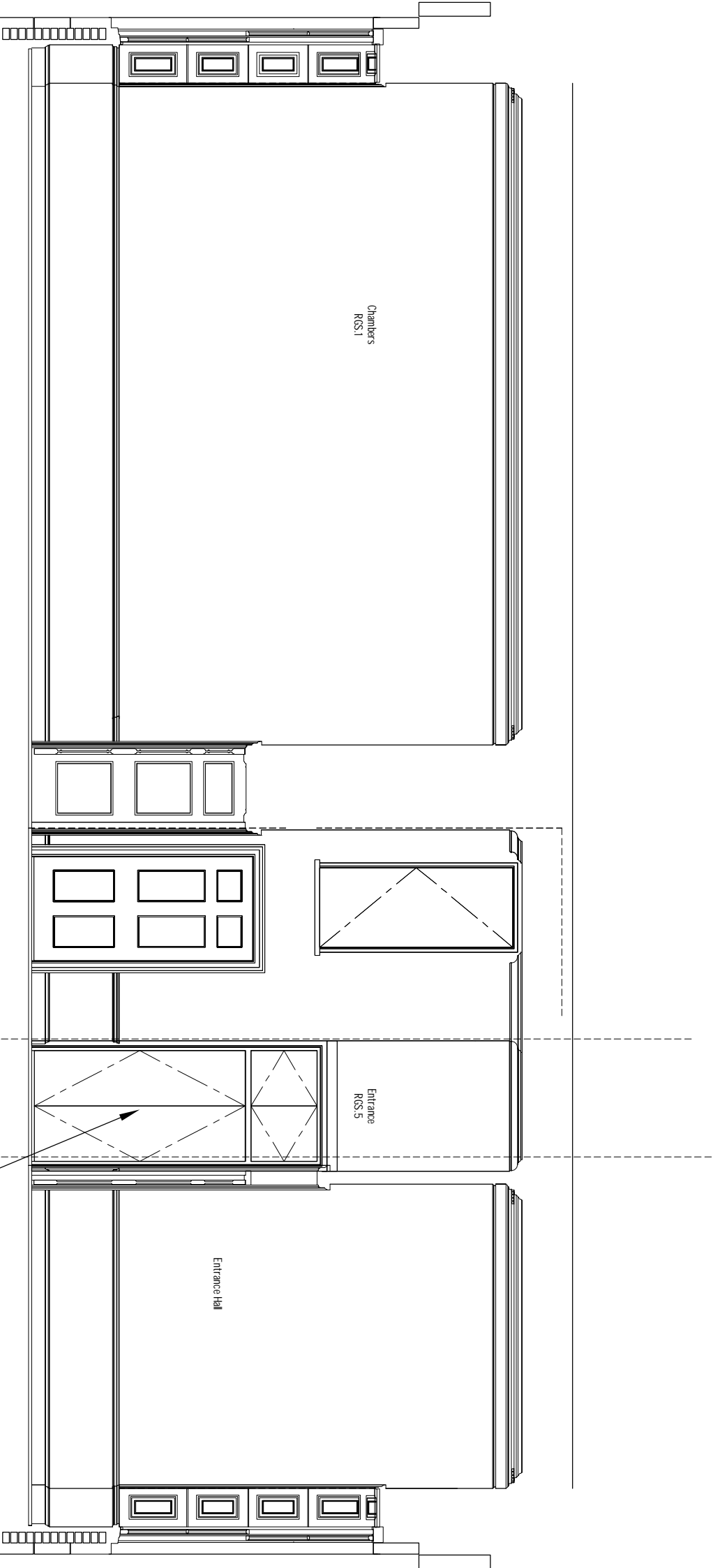
CHARTERED ARCHITECT

FACS 020 8255 4082

LONDON SW14 8JG

TEL 020 8876 0886

section HH



fire resisting flush cupboard doors

see detailed arrangement 1814/detail/4/6

metres

0 1 2 3 4 5

lbc

GENERAL ARRANGEMENTS

SECTIONS

LOCATION

ALTERATIONS

GROUND PAIR NORTH AND SOUTH, 4 STONE BUILDINGS, LINCOLN'S INN, LONDON, WC2A 3XT
THE CHAMBERS OF GEORGE BOMPAS QC

NICHOLAS HILL THOMPSON

18 PALEWELL PARK

SCALE: 1:50@A3

DATE: APR 20

DRAWN: NHT

1814/3/12/detail

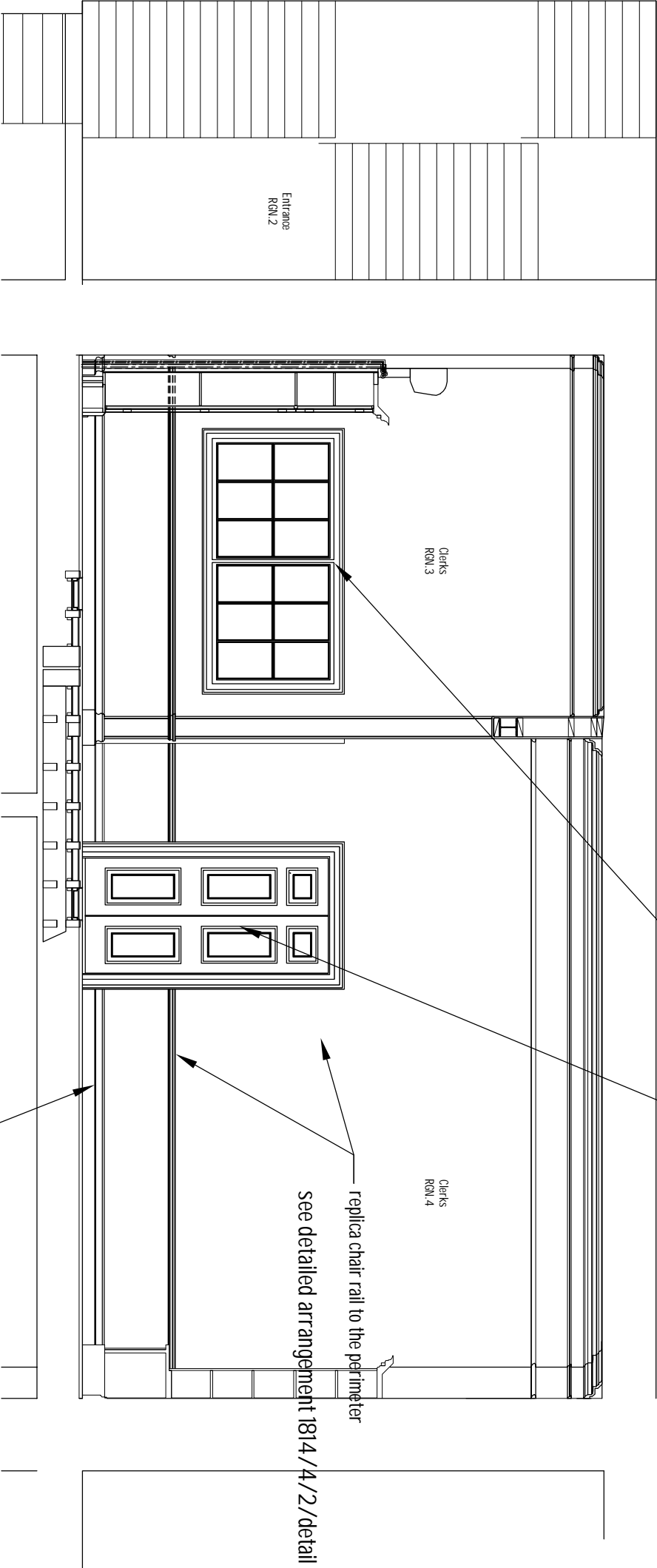
CHARTERED ARCHITECT

FACS 020 8255 4082

LONDON SW14 8JG

TEL 020 8876 0886

section FF



fire resisting glazed panel

see detailed arrangement 1814/4/2/detail

new replica painted timber paneled door

see detailed arrangement 1814/4/4/detail

replica chair rail to the perimeter

see detailed arrangement 1814/4/2/detail

replica timber skirting

see detailed arrangement 1814/4/2/detail

lbc

GENERAL ARRANGEMENTS		SCALE: 1:50@A3
SECTIONS		DATE: APR 20
LOCATION		DRAWN: NHT
ALTERATIONS		

1814/3/13/detail

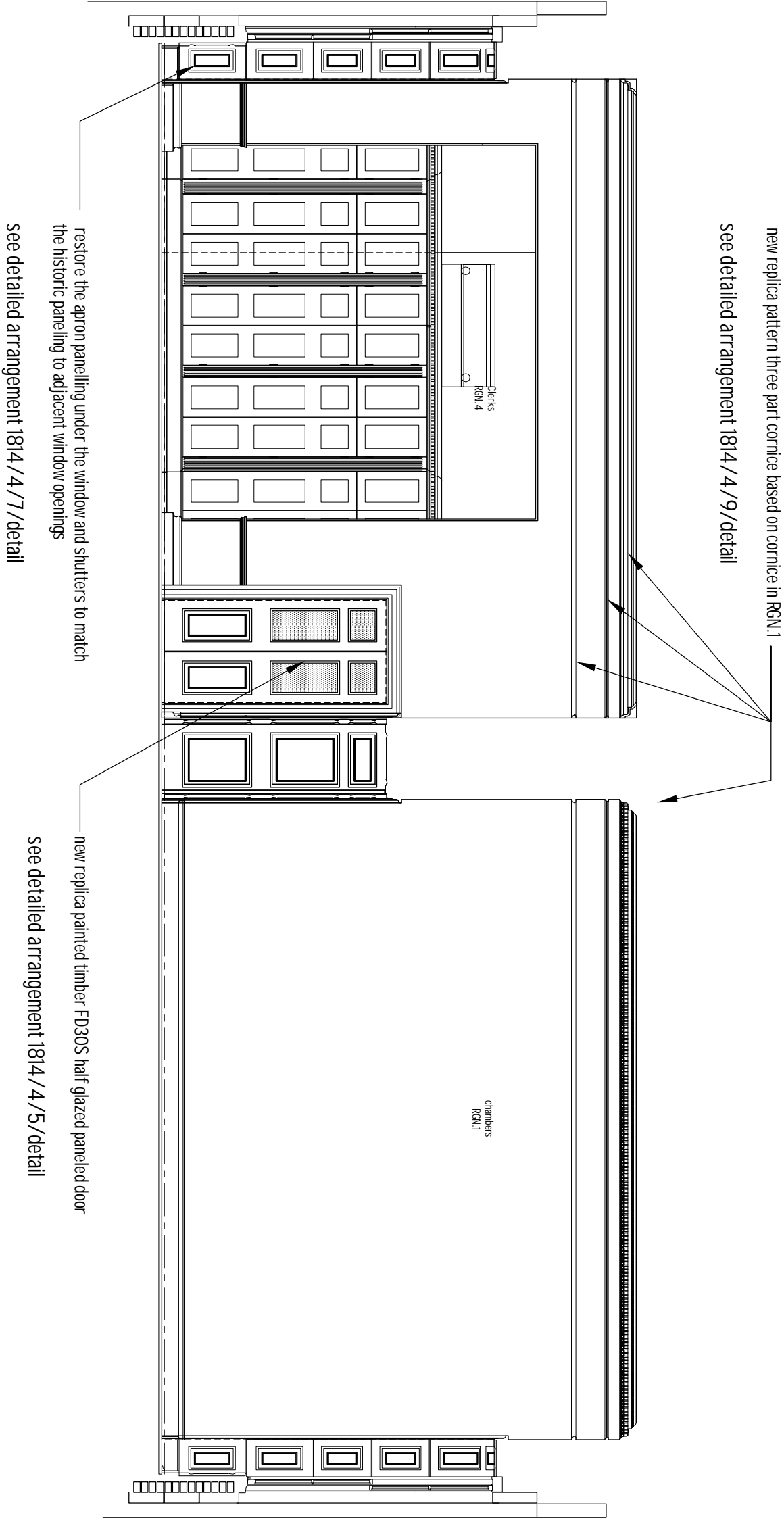
GROUND PAIR NORTH AND SOUTH, 4 STONE BUILDINGS, LINCOLN'S INN, LONDON, WC2A 3XT	
THE CHAMBERS OF GEORGE BOMPAS QC	
NICHOLAS HILL THOMPSON	
18 PALEWELL PARK	
LONDON	SW14 8JG
TEL 020 8876 0886	
CHARTERED ARCHITECT	
FACS 020 8255 4082	

metres

0 1 2 3 4 5



section DD



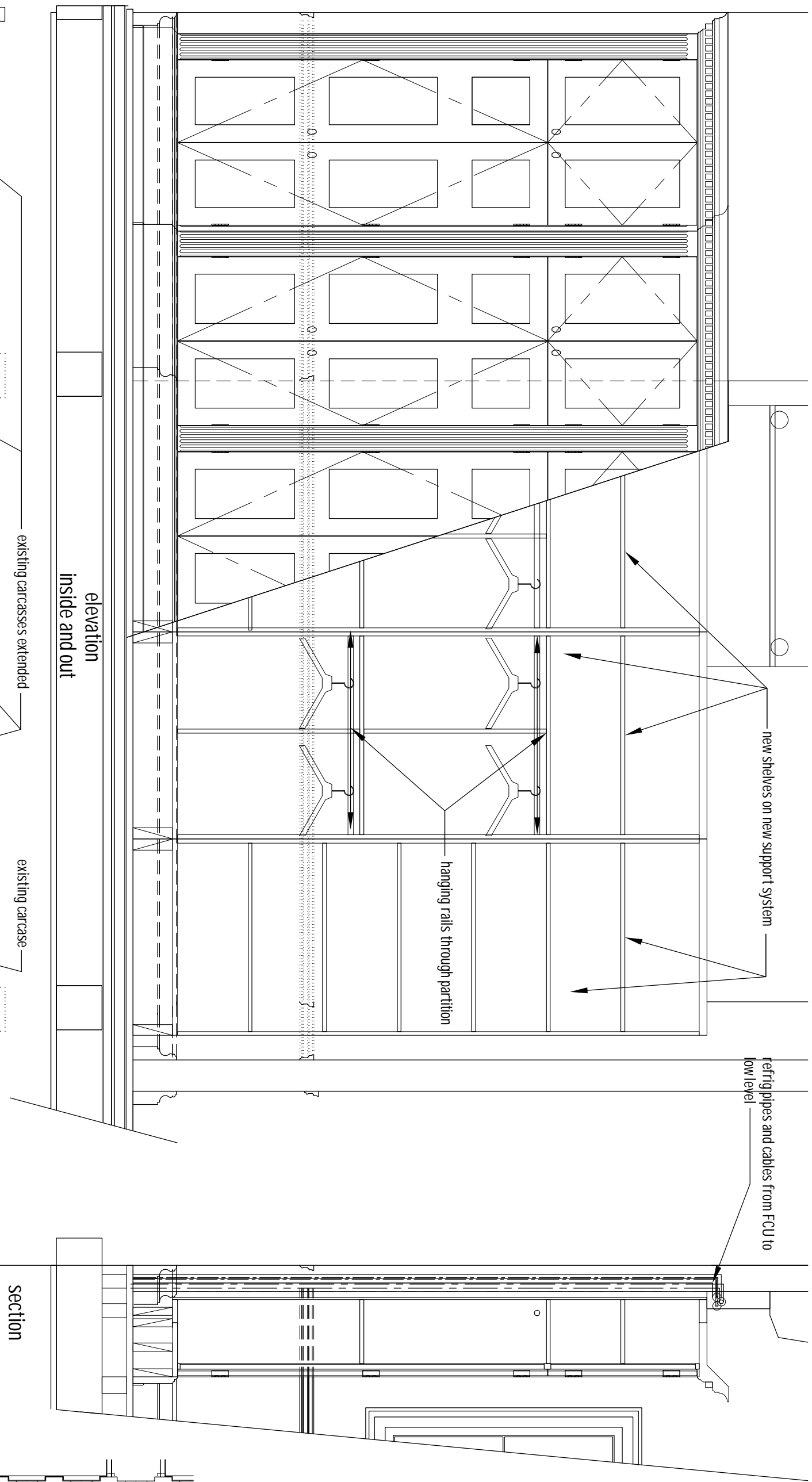
metres

0 1 2 3 4 5

lbc

1814/3/14/detail

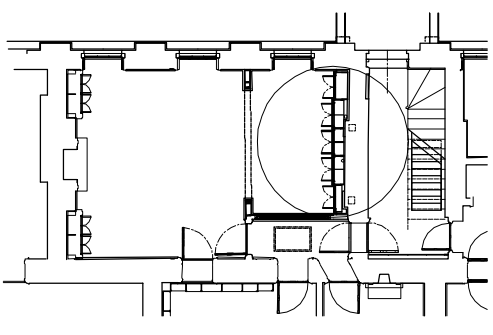
GENERAL ARRANGEMENTS		SCALE:	1:50@A3
SECTIONS		DATE:	APR 20
GENERAL CONSTRUCTION		DRAWN:	NHT
ALTERATIONS:			
GROUND PAIR NORTH AND SOUTH, 4 STONE BUILDINGS, LINCOLN'S INN, LONDON, WC2A 3XT			
THE CHAMBERS OF GEORGE BOMPAS QC			
NICHOLAS HILL THOMPSON			
18 PALEWELL PARK			
LONDON		SW14 8JG	
		TEL 020 8876 0886	
			CHARTERED ARCHITECT
			FACS 020 8255 4082



elevation
inside and out

section

plan



refer to drawing
1814/detail/2/10
for location

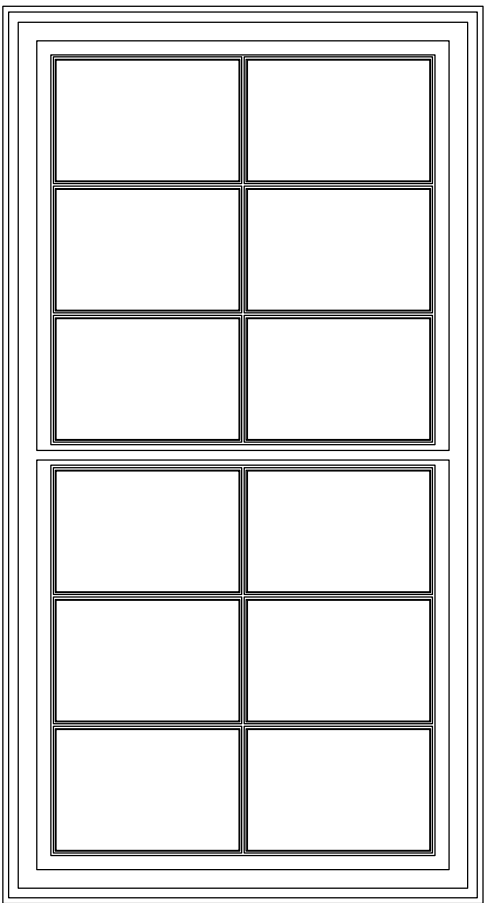
lbc

DETAILED ARRANGEMENTS
ADAPTED RETAINED BOOKSHELVES
ELEVATIONS AND SECTIONS

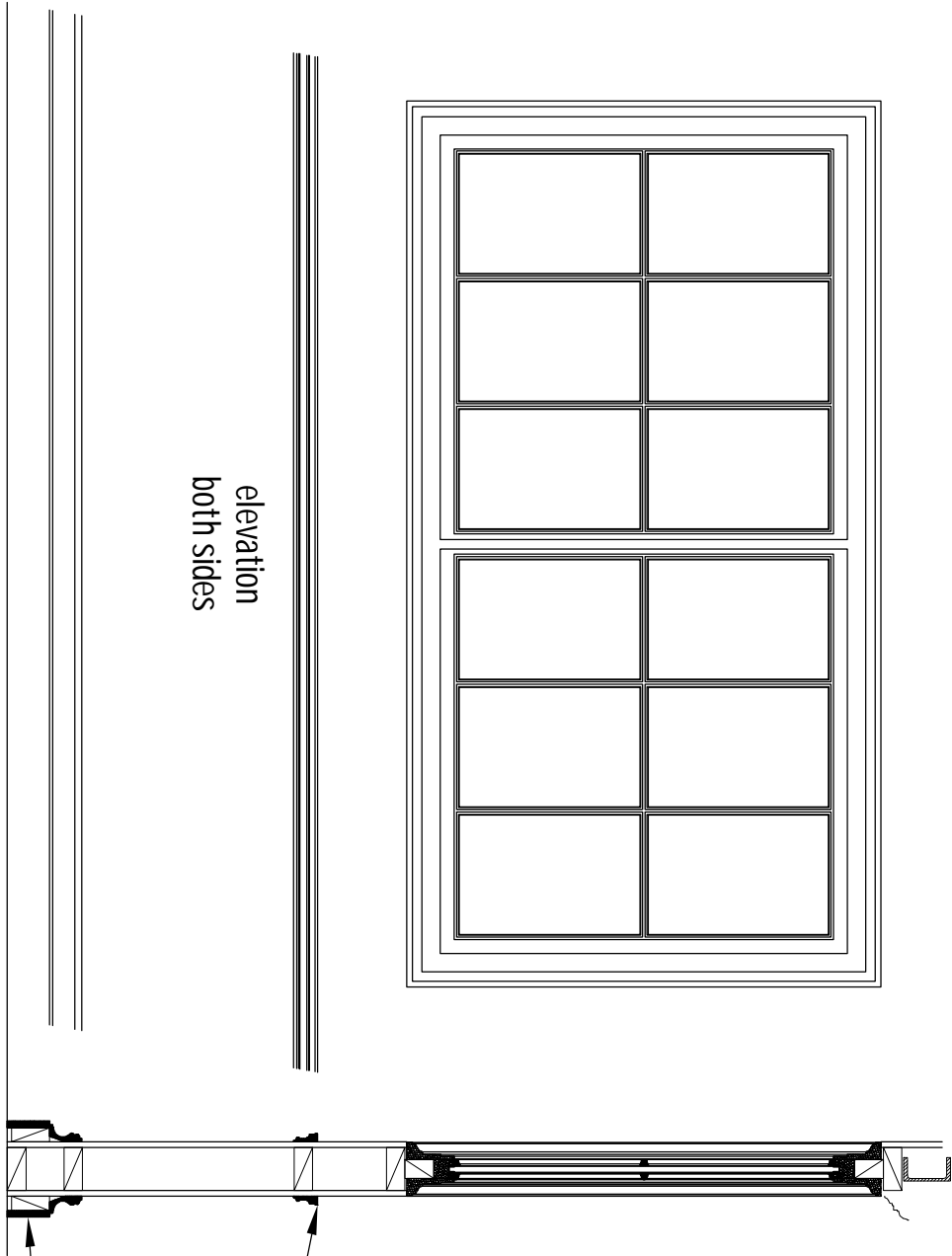
SCALE: 1:20@A3
DATE: APR 20
DRAWN: NHT

ALTERATIONS

GROUND PAIR, NORTH AND SOUTH, 4 STONE BUILDINGS, LINCOLN'S INN, LONDON, WC2A 3XT
THE CHAMBERS OF GEORGE BOMPAS QC
NICHOLAS HILL THOMPSON
8 PALEWELL PARK LONDON SW14 8JG TEL 020 8876 0886 CHARTERED ARCHITECT
FACS 020 8255 4082



elevation
both sides



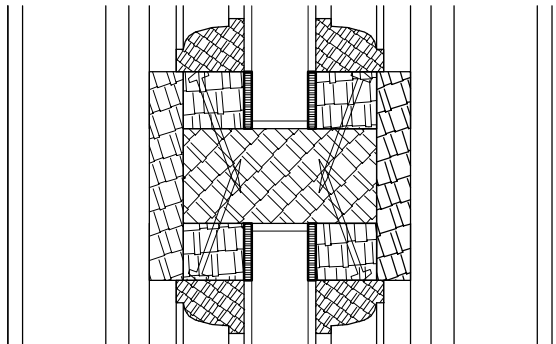
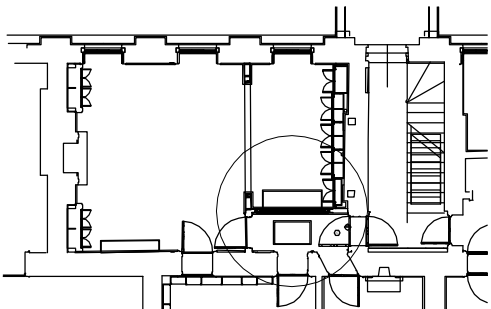
section

glazed screen, chair rail and skirting board
scale 1:20

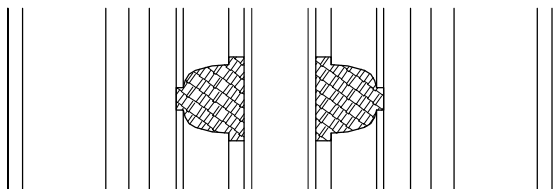


plan

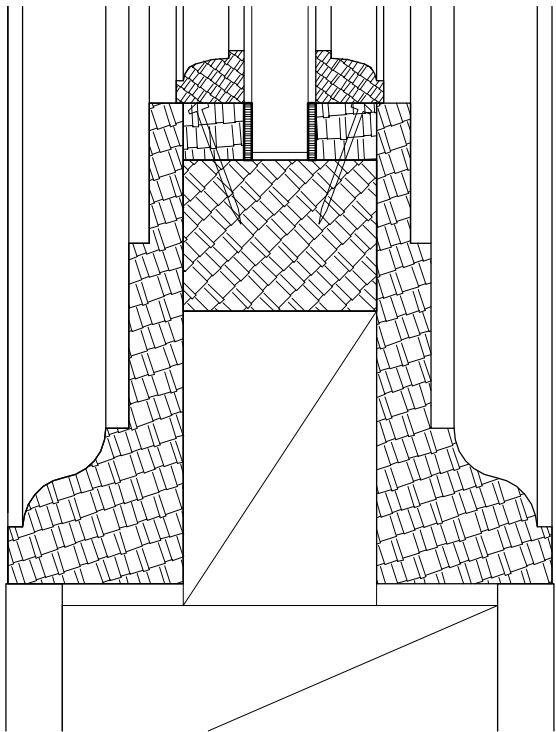
refer to drawing
1814/detail/2/10
for location



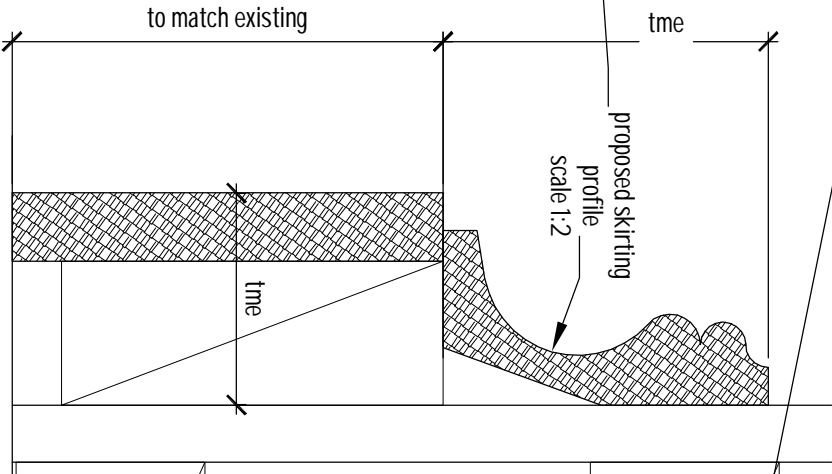
central mullion
scale 1:2



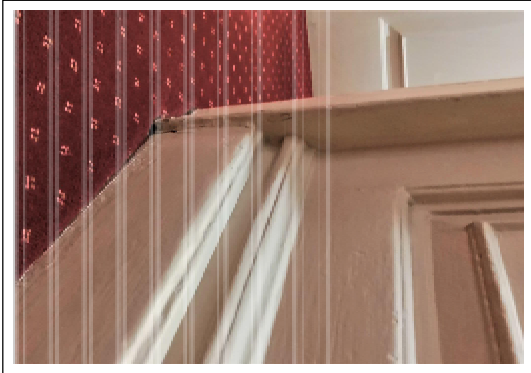
glazing bar
scale 1:2



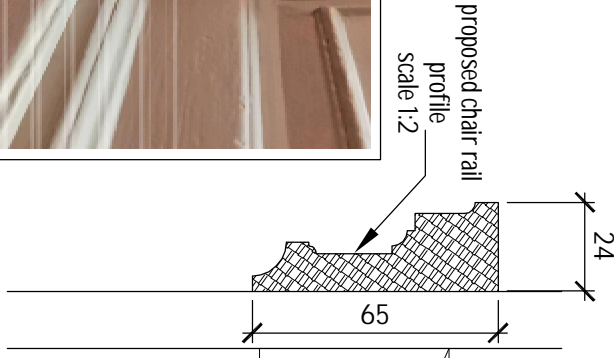
perimeter frame
scale 1:2



proposed skirting
profile
scale 1:2



historic skirting board
in the corridor
RGN.5



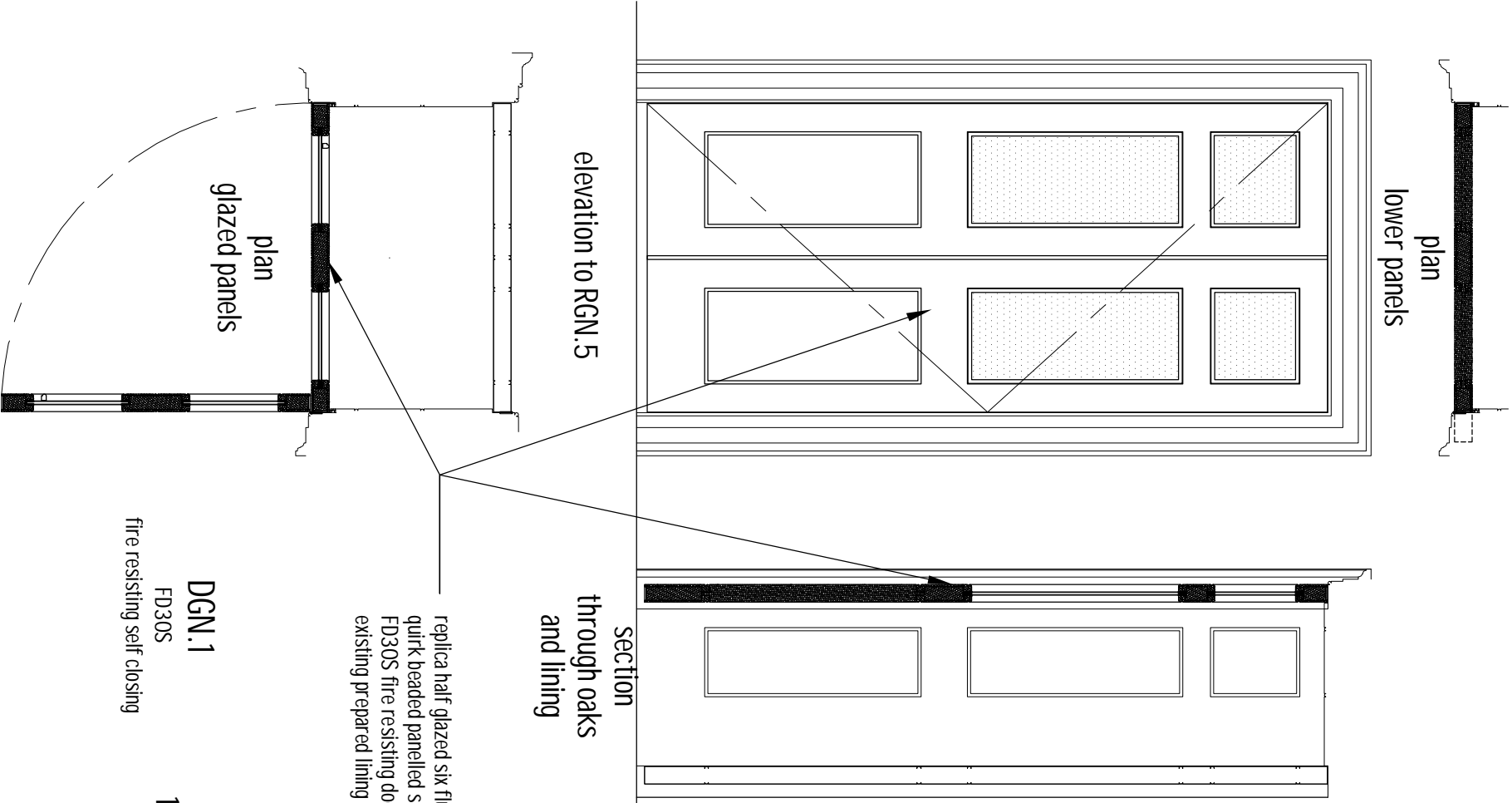
proposed chair rail
profile
scale 1:2



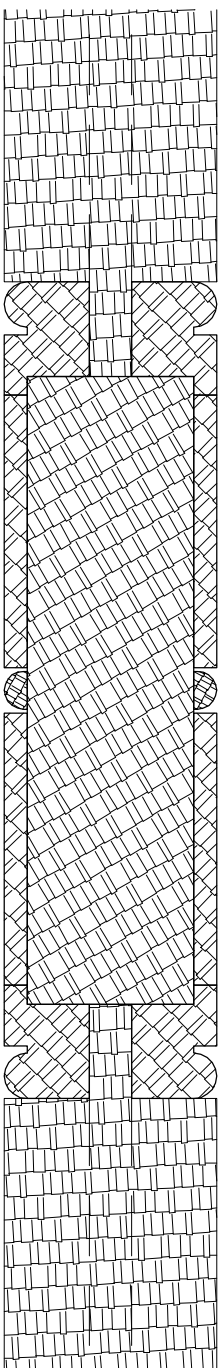
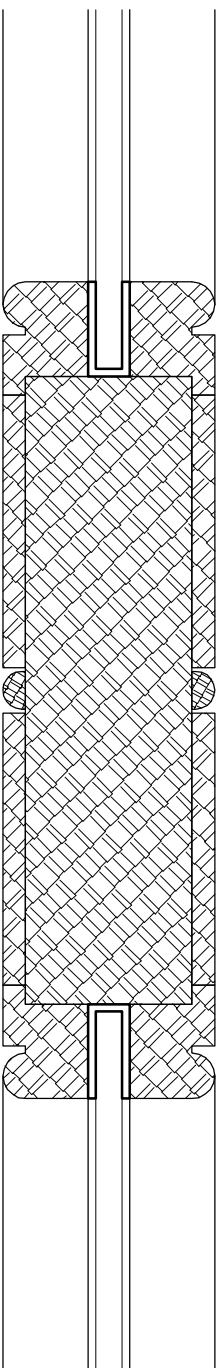
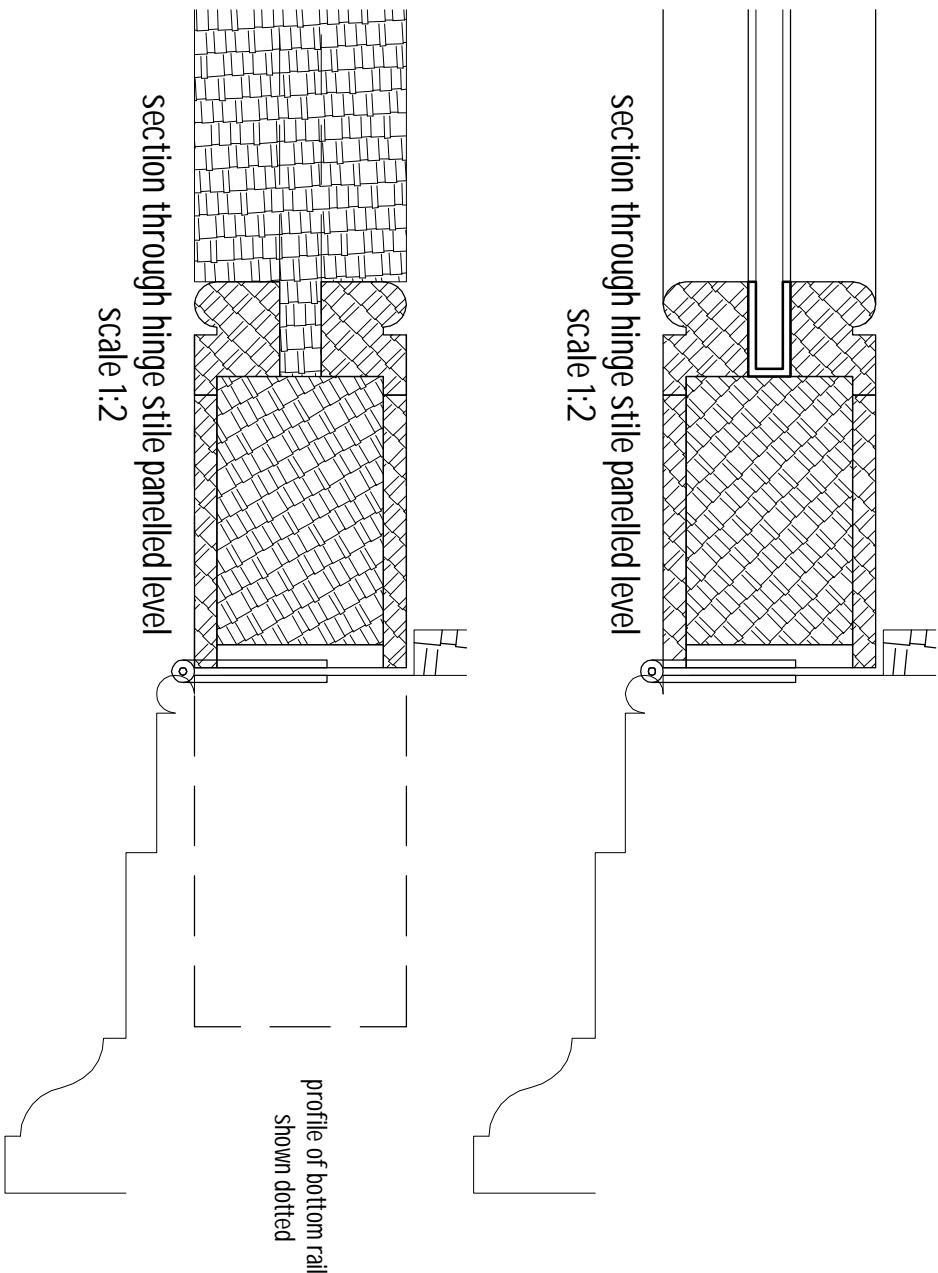
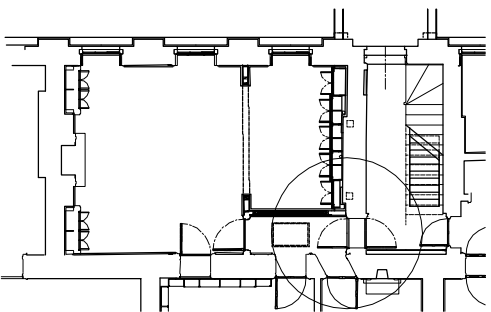
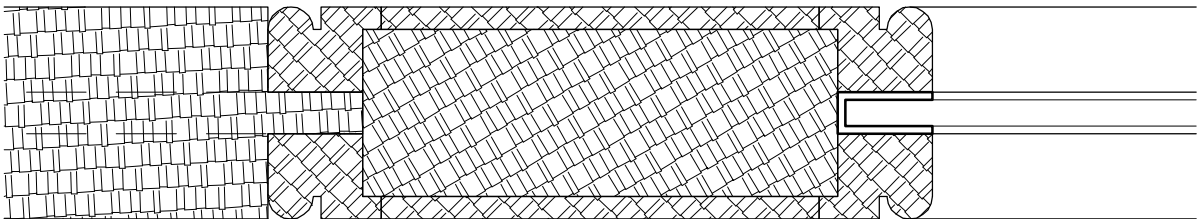
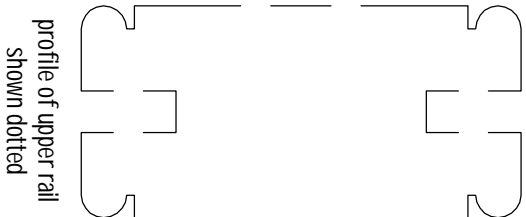
historic chair rail in
chambers
RGN.2

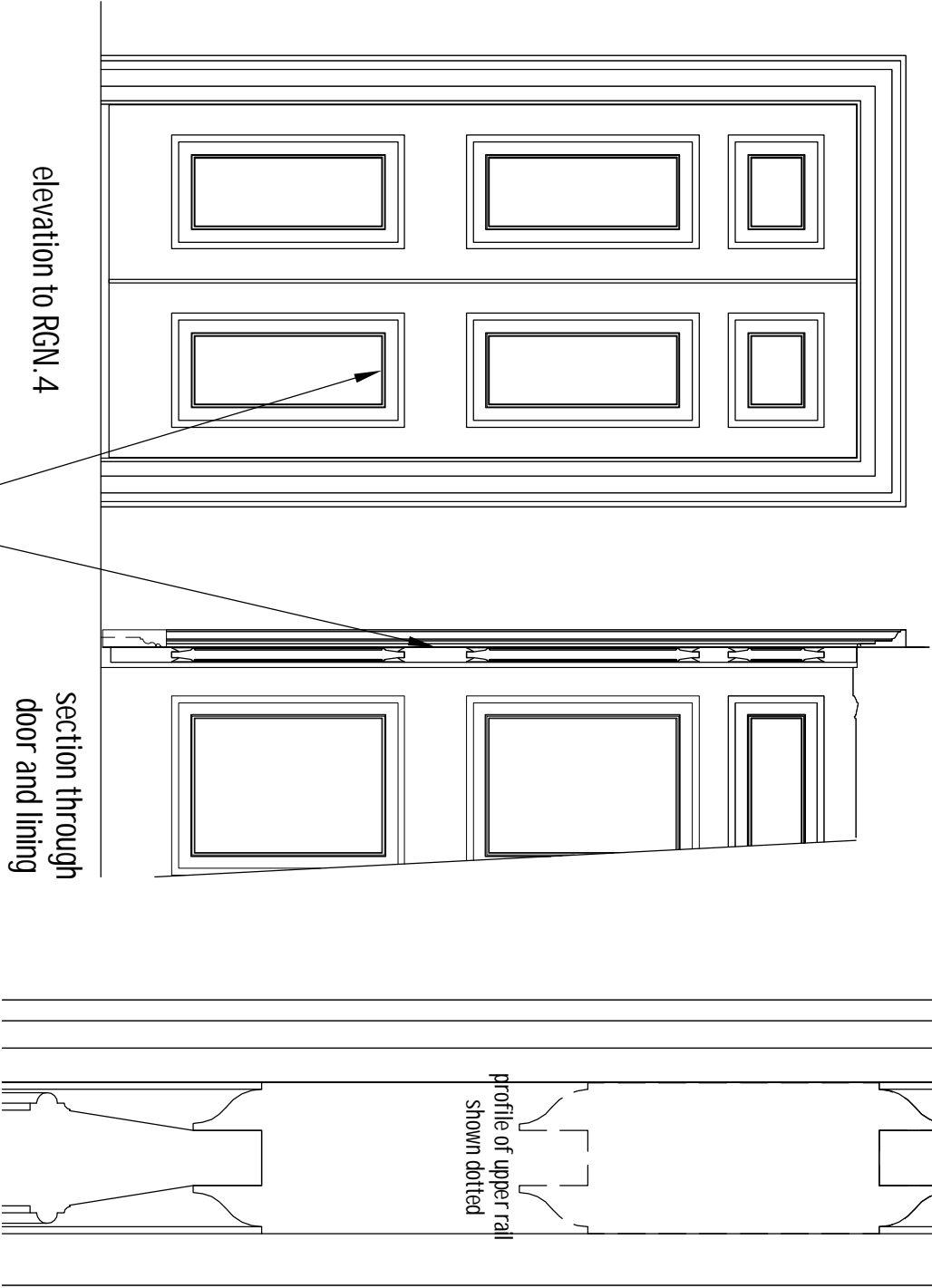
lbc

DETAILED ARRANGEMENTS	SCALE: 1:20#1:2	@A3
SCREEN, CHAIR RAIL AND SKIRTING BOARD	DATE: APR 20	1814/4/2/detail
ELEVATIONS AND SECTIONS	DRAWN: NHT	
ALTERATIONS		
GROUND PAIR, NORTH AND SOUTH, 4 STONE BUILDINGS, LINCOLN'S INN, LONDON, WC2A 3XT		
THE CHAMBERS OF GEORGE BOMPAS QC		
NICHOLAS HILL THOMPSON		CHARTERED ARCHITECT
18 PALEWELL PARK	LONDON SW14 8JG	TELE 020 8876 0886
		FACS 020 8255 4082



refer to drawing
1814/detail/2/10
for location



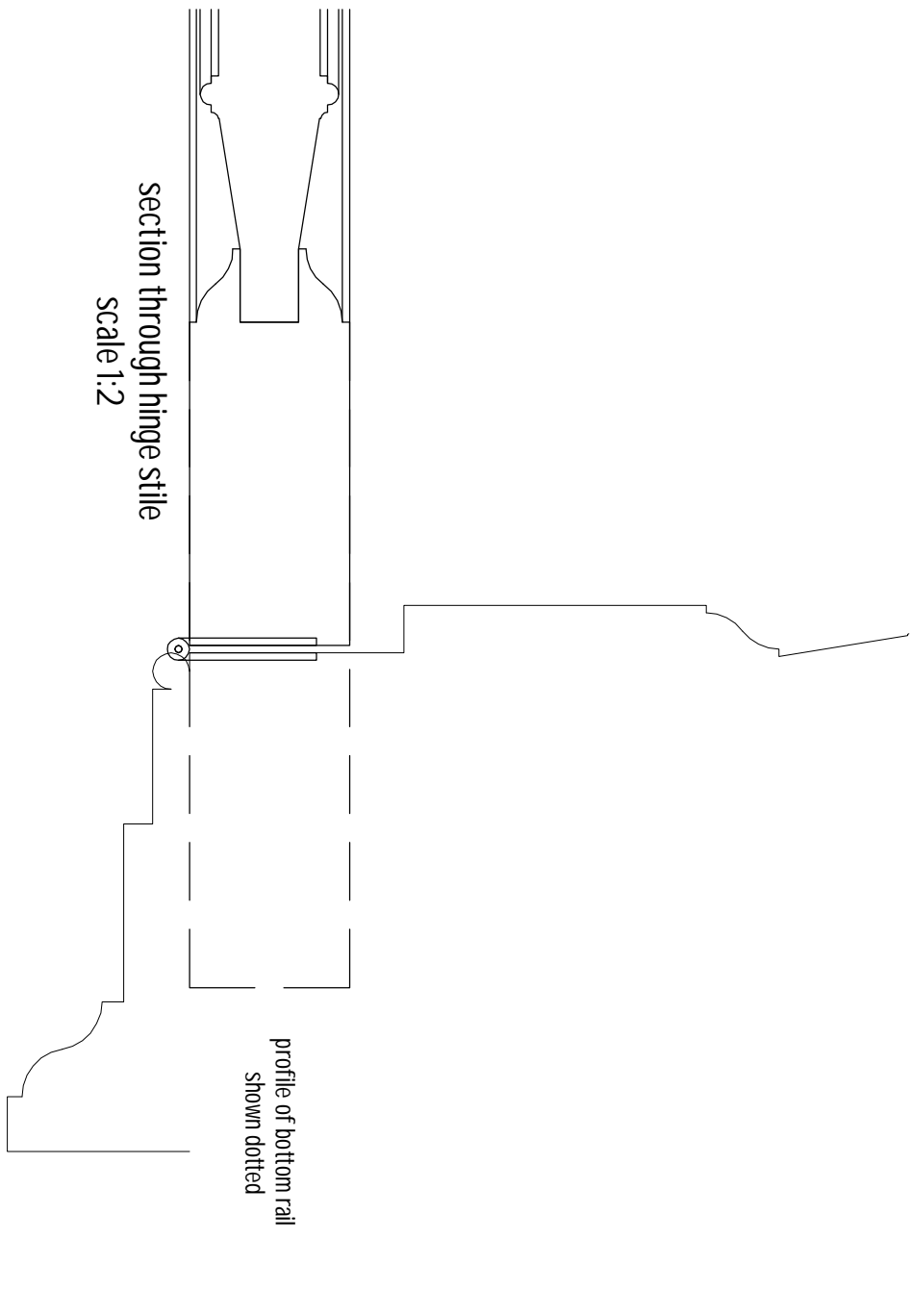
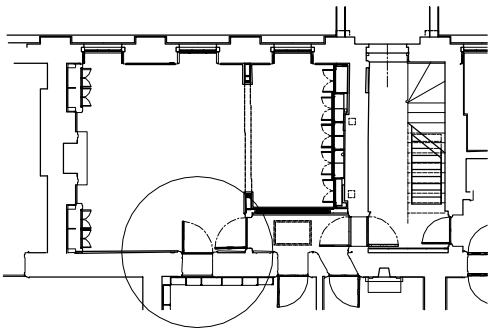


replica six raised, fielded and
beaded panelled door leaf in
existing prepared lining

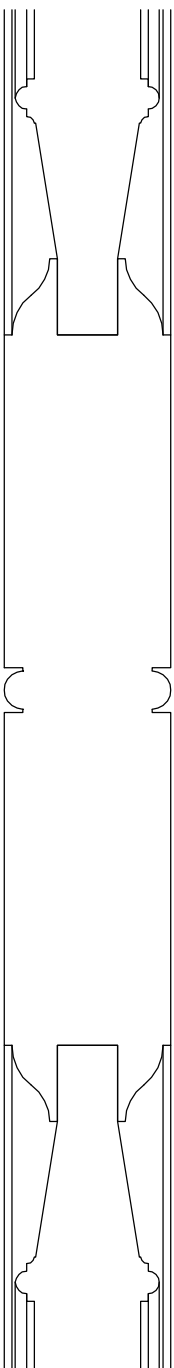
DGN.7

cupboard door

refer to drawing
1814/detail/2/13
for location

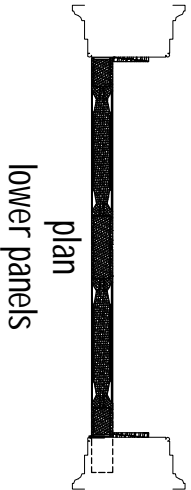


section through meeting stile
scale 1:2

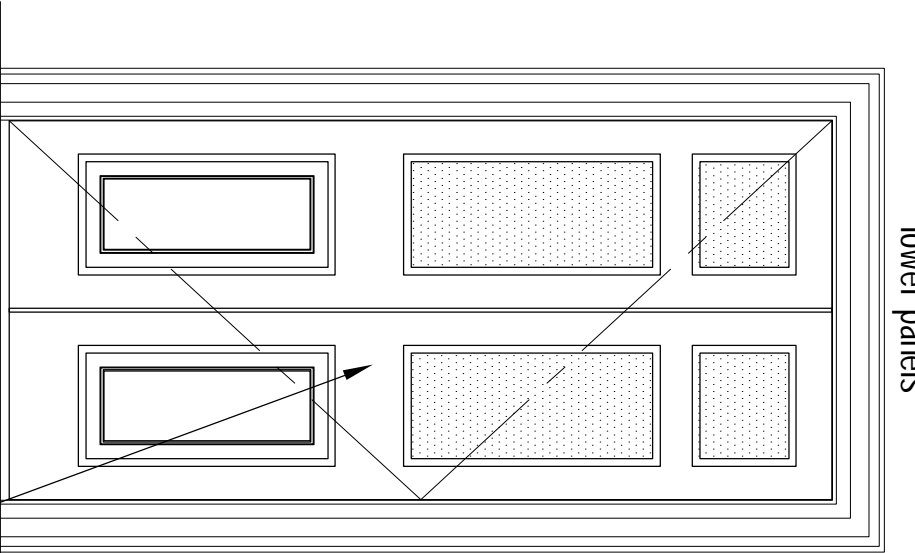


lbc

DETAILED ARRANGEMENTS	SCALE: 1:20 @A3
REPLICA DOOR LEAFS IN EXISTING LININGS	DATE: APR 20
PLANS, ELEVATIONS AND SECTIONS	DRAWN: NHT
ALTERATIONS	
GROUND PAIR NORTH AND SOUTH, 4 STONE BUILDINGS, LINCOLN'S INN, LONDON, WC2A 3XT	
THE CHAMBERS OF GEORGE BOMPAS QC	
NICHOLAS HILL THOMPSON	
18 PALEWELL PARK	LONDON SW14 8JG
	TEL 020 8876 0886
	CHARTERED ARCHITECT
	FACS 020 8255 4082

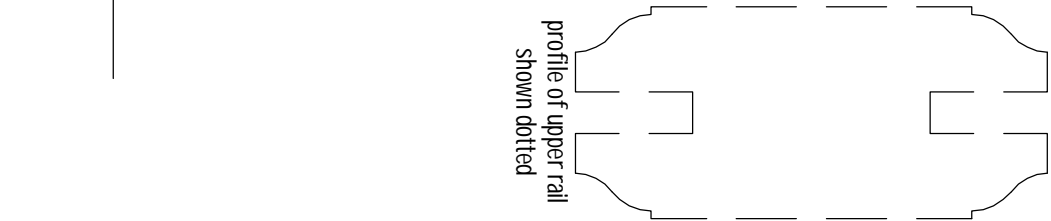


plan
lower panels

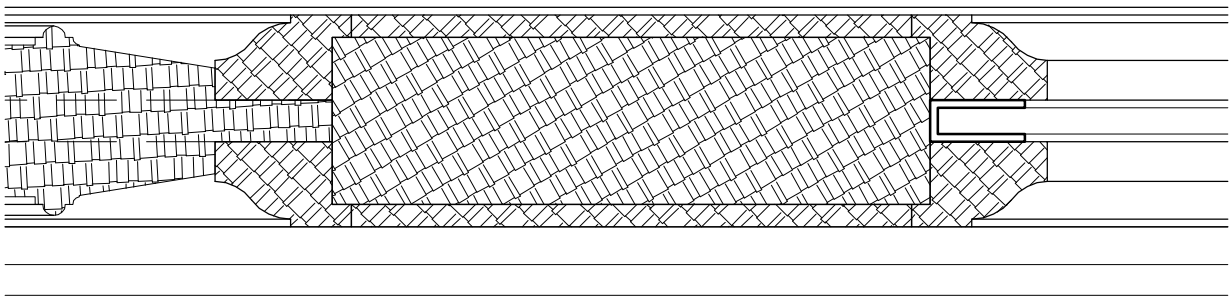


elevation to RGN.4

section through
door and lining



profile of upper rail
shown dotted

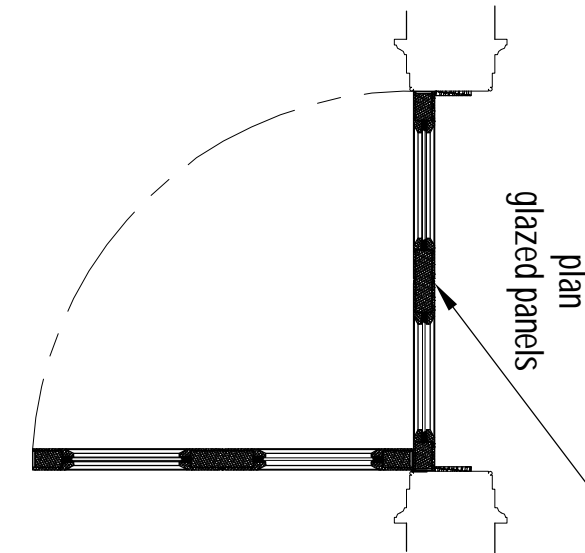


replica half glazed six raised,
fielded and beaded panelled self
closing FD30 door leaf in existing
prepared lining

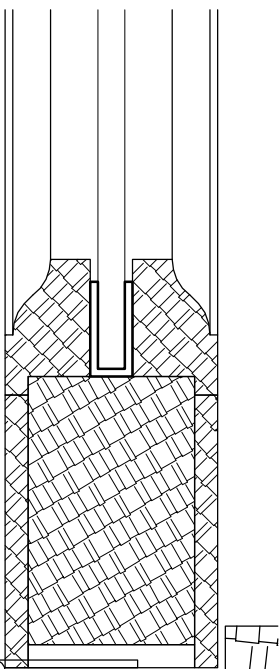
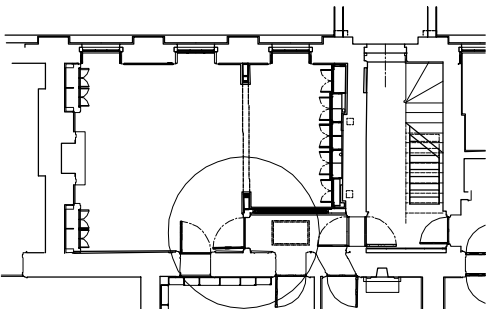
section through
middle rail
scale 1:2

DGN.6
FD30
fire resisting self closing

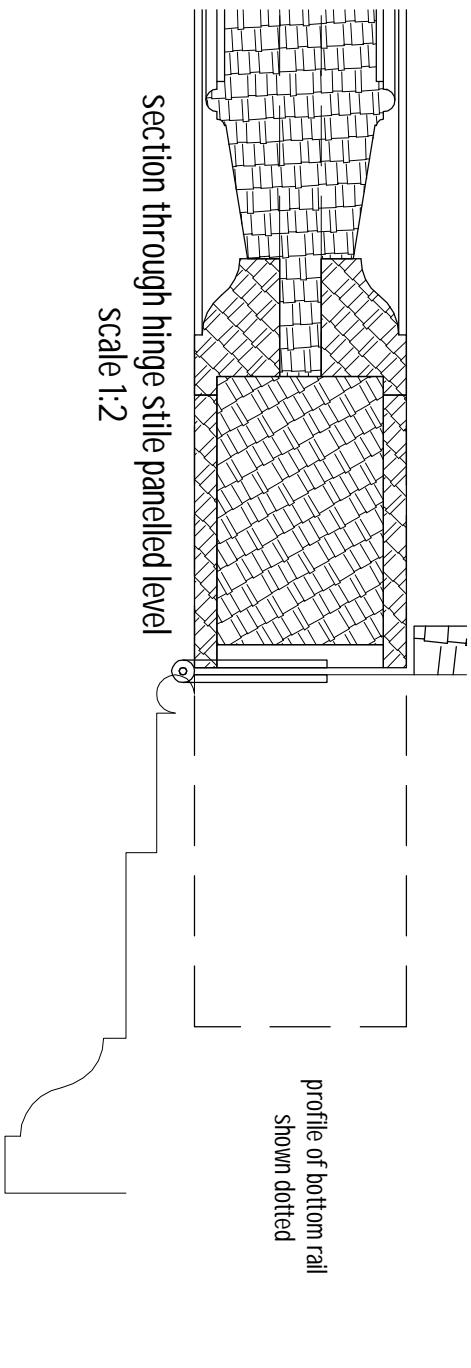
refer to drawing
1814/detail/2/14
for location



plan
glazed panels

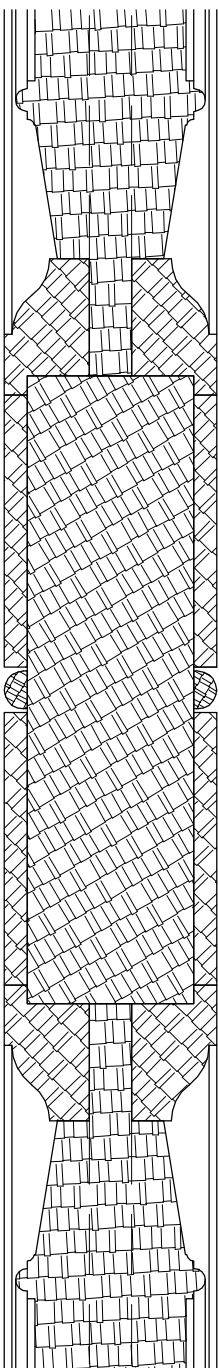


section through hinge stile panelled level
scale 1:2

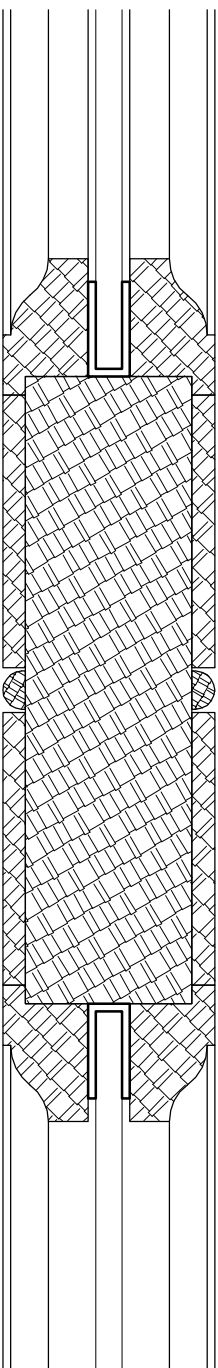


profile of bottom rail
shown dotted

section through hinge stile panelled level
scale 1:2

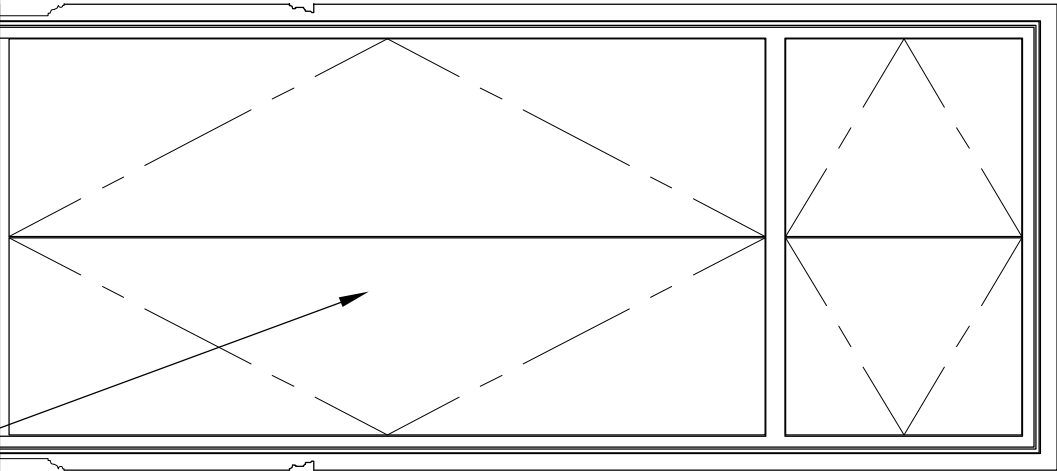


section through meeting stile panelled level
scale 1:2



section through meeting stile glazed level
scale 1:2

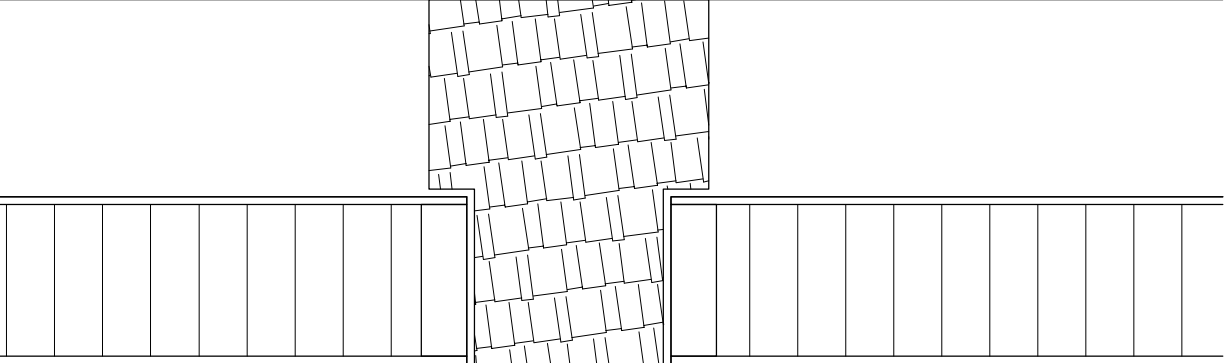
lbc



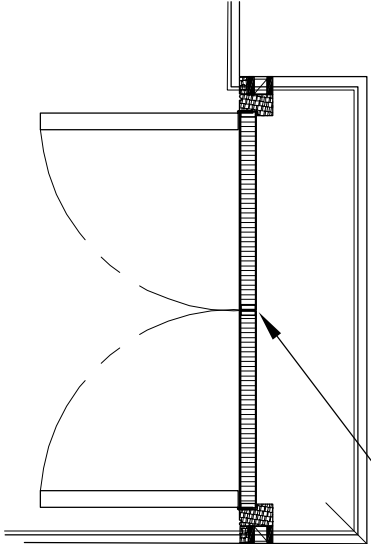
elevation to RGS.5



section through
doors and frame



section through doors
and flush transome
frame
scale 1:2



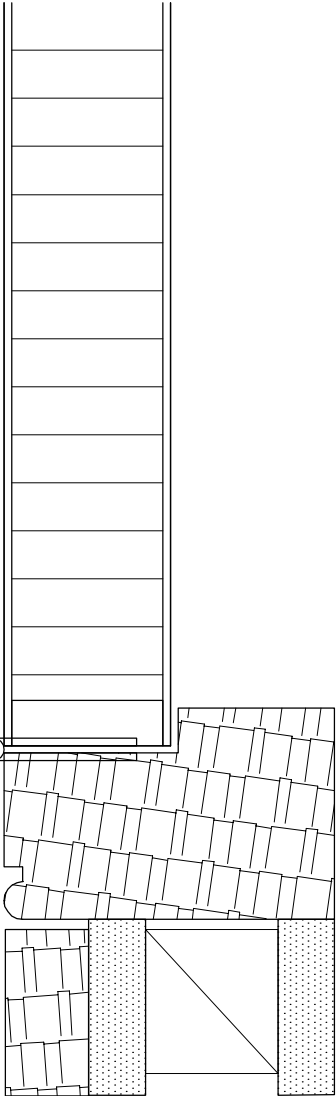
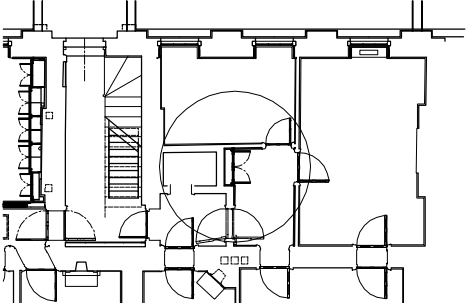
plan

fire resisting cupboard doors

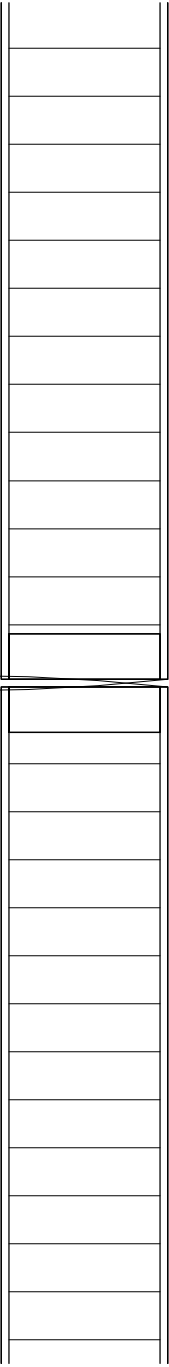
FD30

CDGS.1

refer to drawing
1814/detail/2/12
for location



section through door and moulded flush frame
scale 1:2

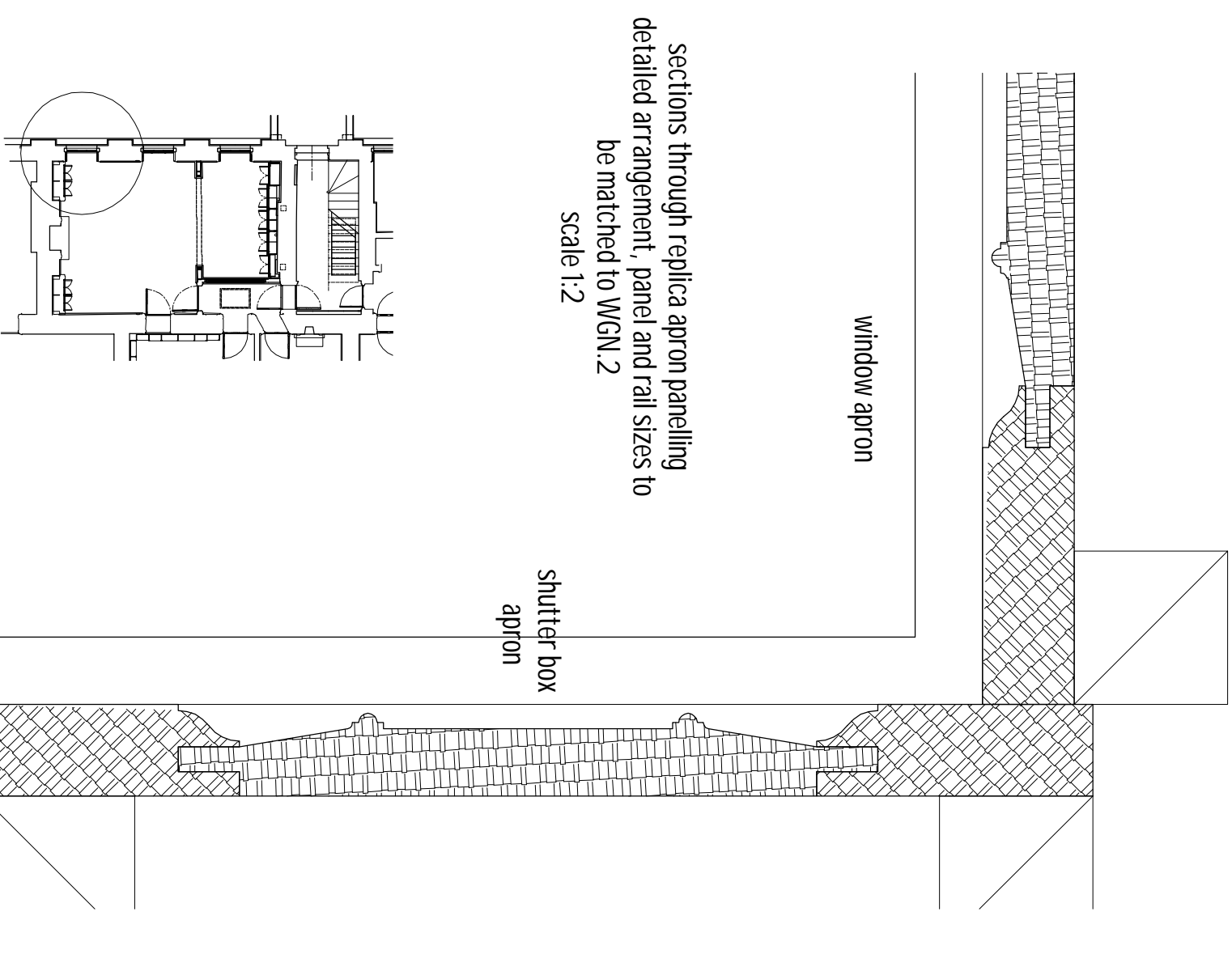
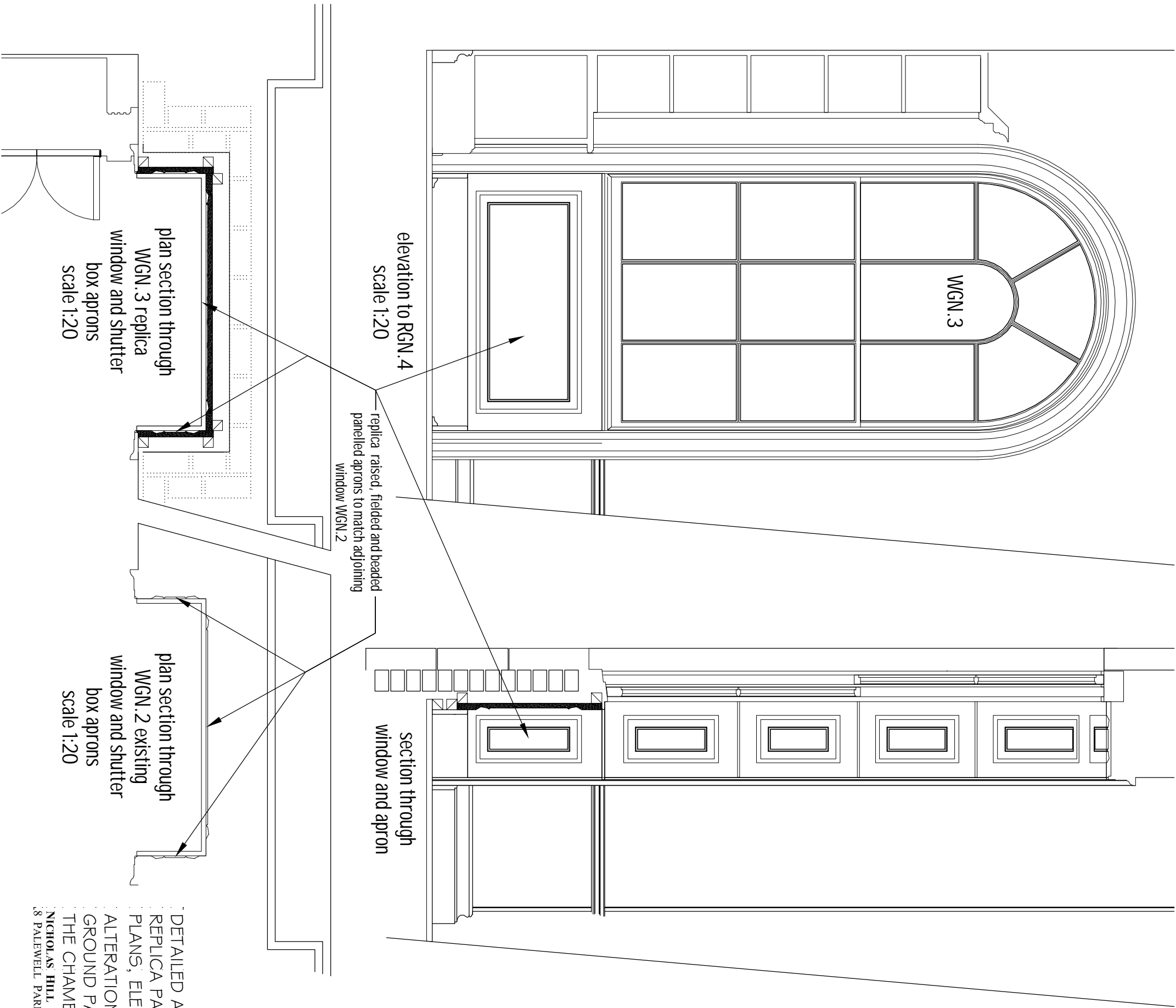


section through meeting doors
scale 1:2

refer to drawing
1814/detail/2/12
for location

lbc

DETAILED ARRANGEMENTS	SCALE: 1:20 @A3
FLUSH CUPBOARD DOORS	DATE: APR 20
PLANS, ELEVATIONS AND SECTIONS	DRAWN: NHT
ALTERATIONS:	
GROUND PAIR NORTH AND SOUTH, 4 STONE BUILDINGS, LINCOLN'S INN, LONDON, WC2A 3XT	
THE CHAMBERS OF GEORGE BOMPAS QC	
NICHOLAS HILL THOMPSON	
8 PALEWELL PARK	
LONDON SW14 8JG	TEL 020 8876 0886
	CHARTERED ARCHITECT
	FACS 020 8255 4082

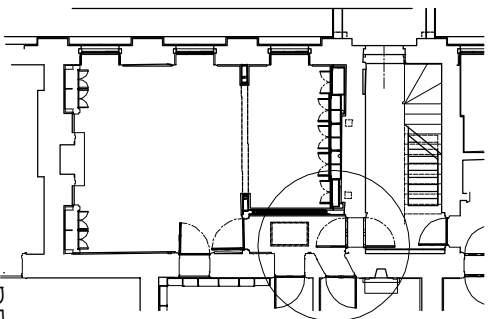
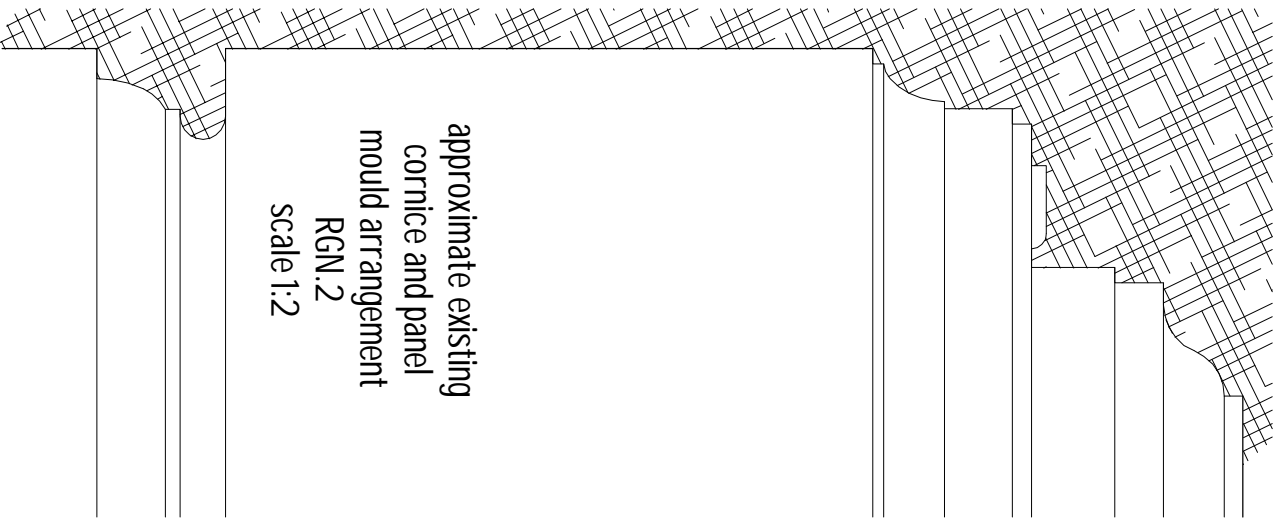
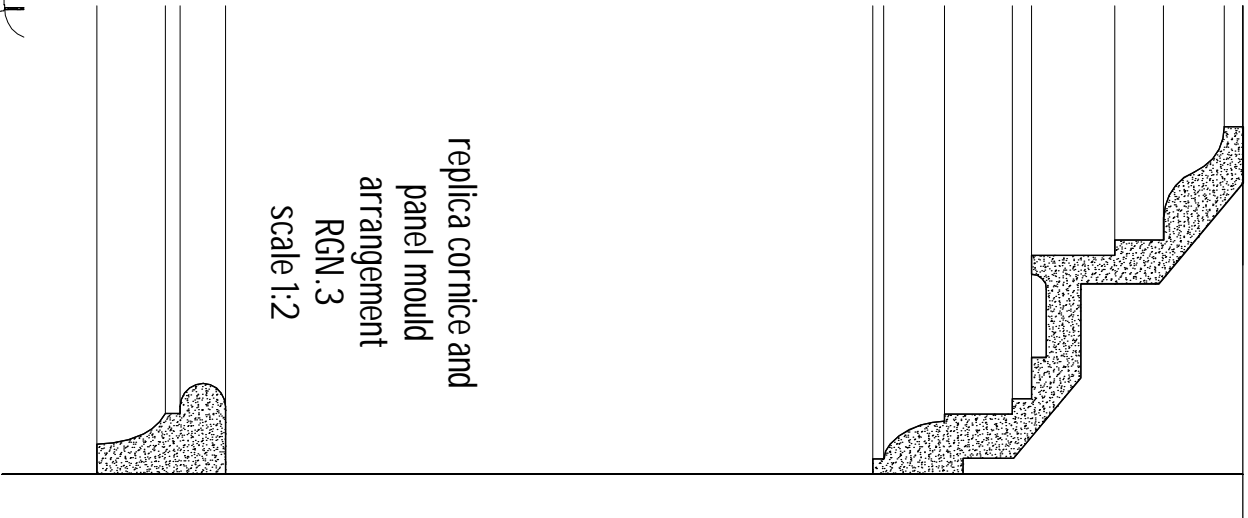
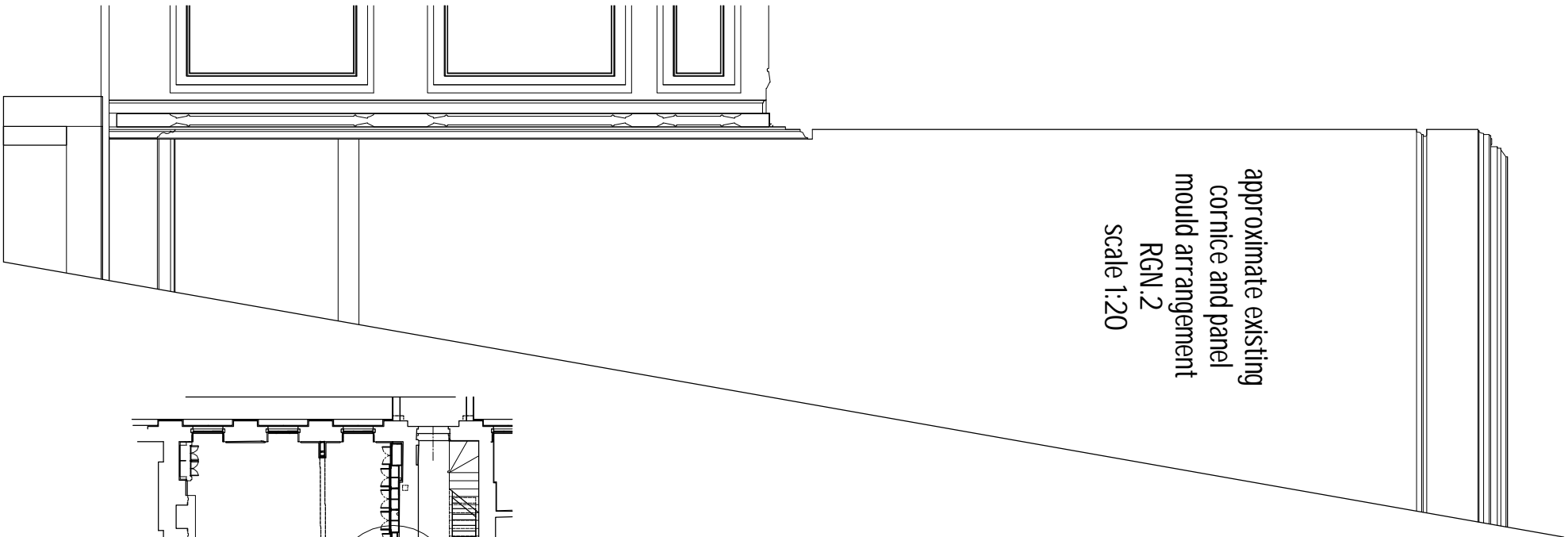
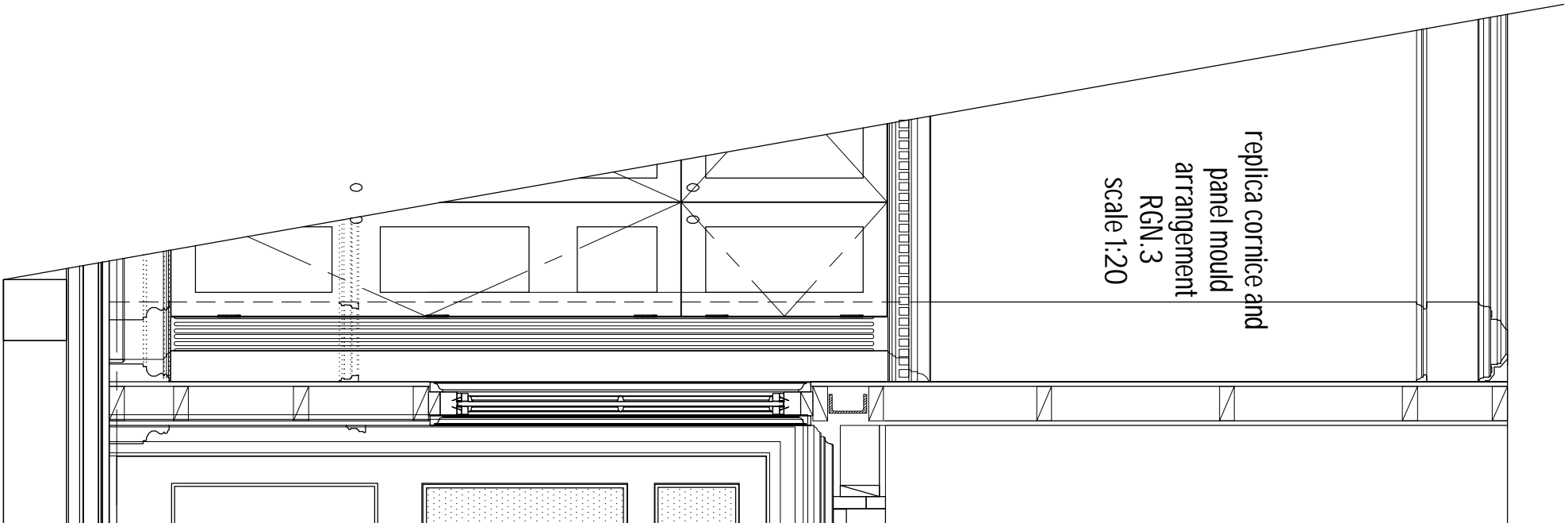


refer to drawing
1814/detail/2/11 & 2/14
for location

DETAILED ARRANGEMENTS	SCALE: 1:20 @A3
REPLICA PANELLLED WINDOW APRONS	DATE: APR 20
PLANS, ELEVATIONS AND SECTIONS	DRAWN: NHT
ALTERATIONS:	
GROUND PAIR, NORTH AND SOUTH, 4 STONE BUILDINGS, LINCOLN'S INN, LONDON, WC2A 3XT	
THE CHAMBERS OF GEORGE BOMPAS QC	
NICHOLAS HILL THOMPSON	
18 PALEWELL PARK	
LONDON SW14 8JG	TEL 020 8876 0886
	CHARTERED ARCHITECT
	FACS 020 8255 4082

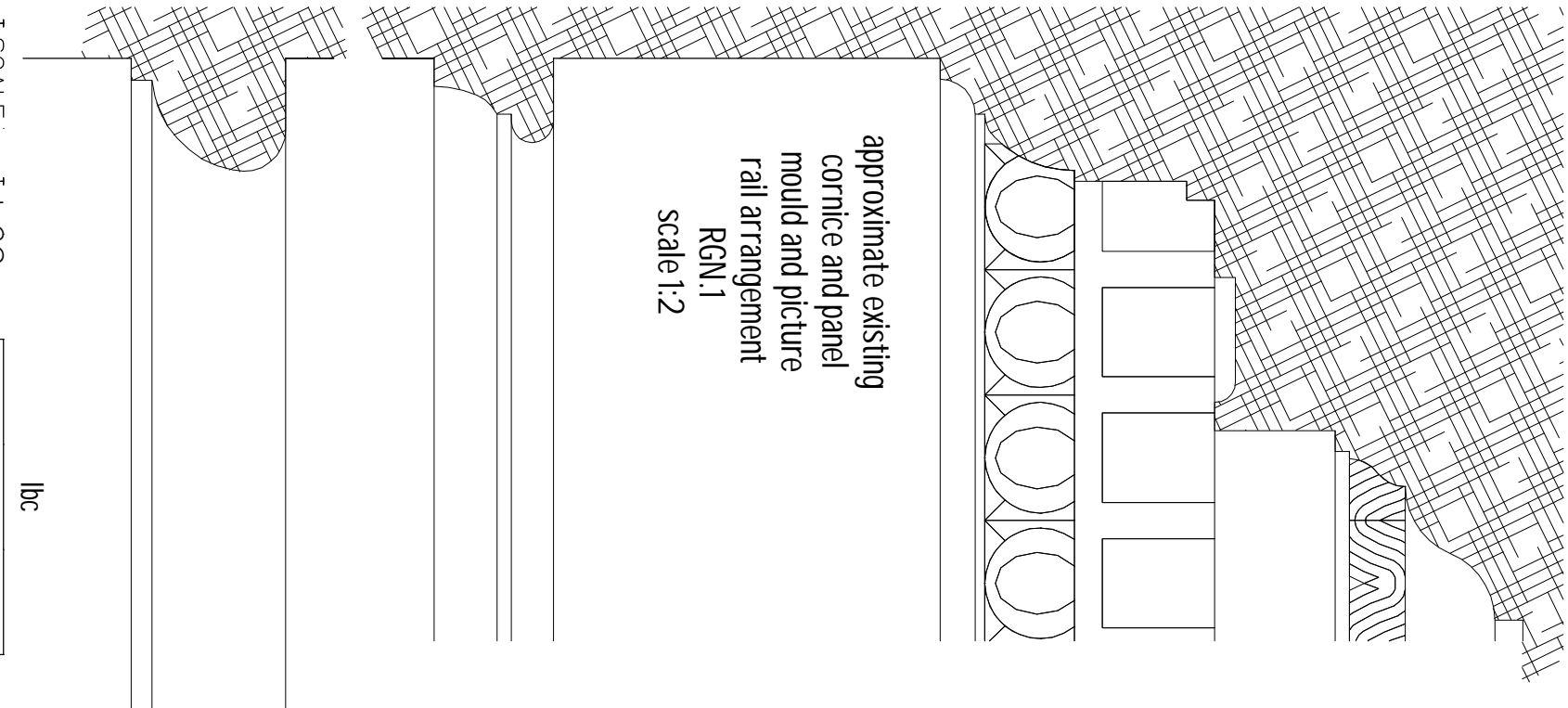
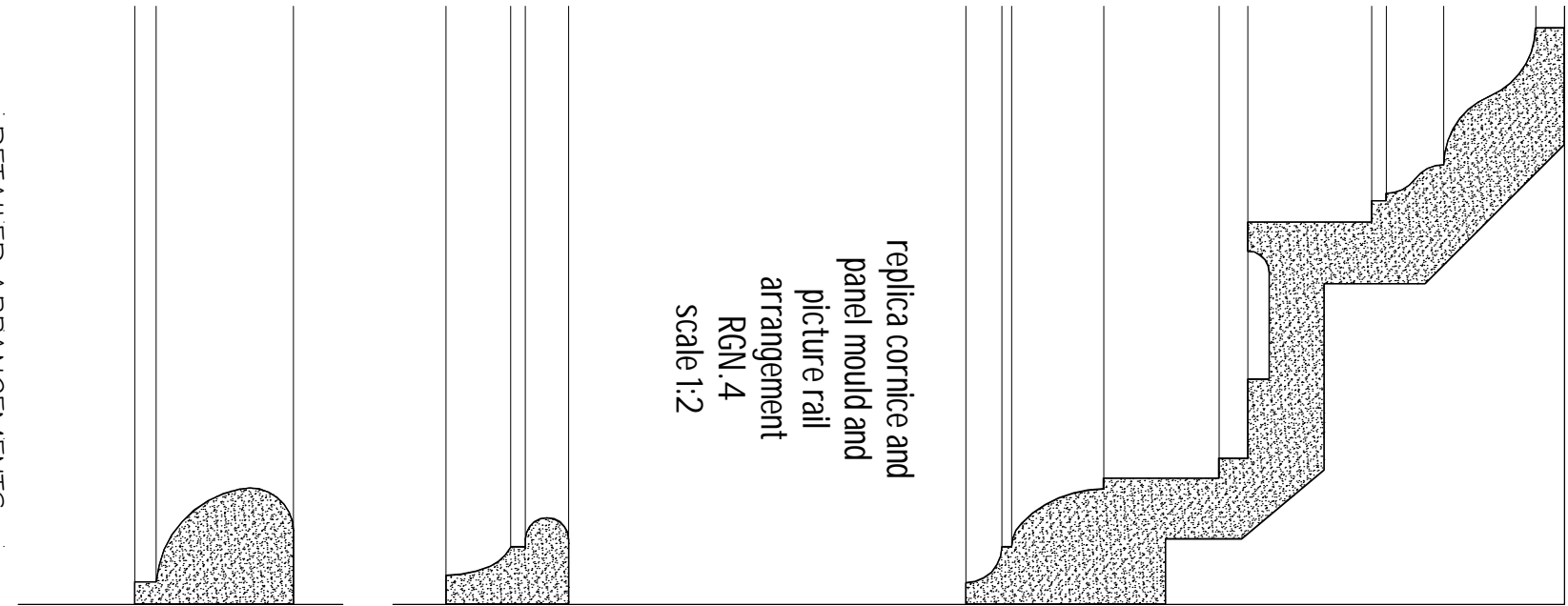
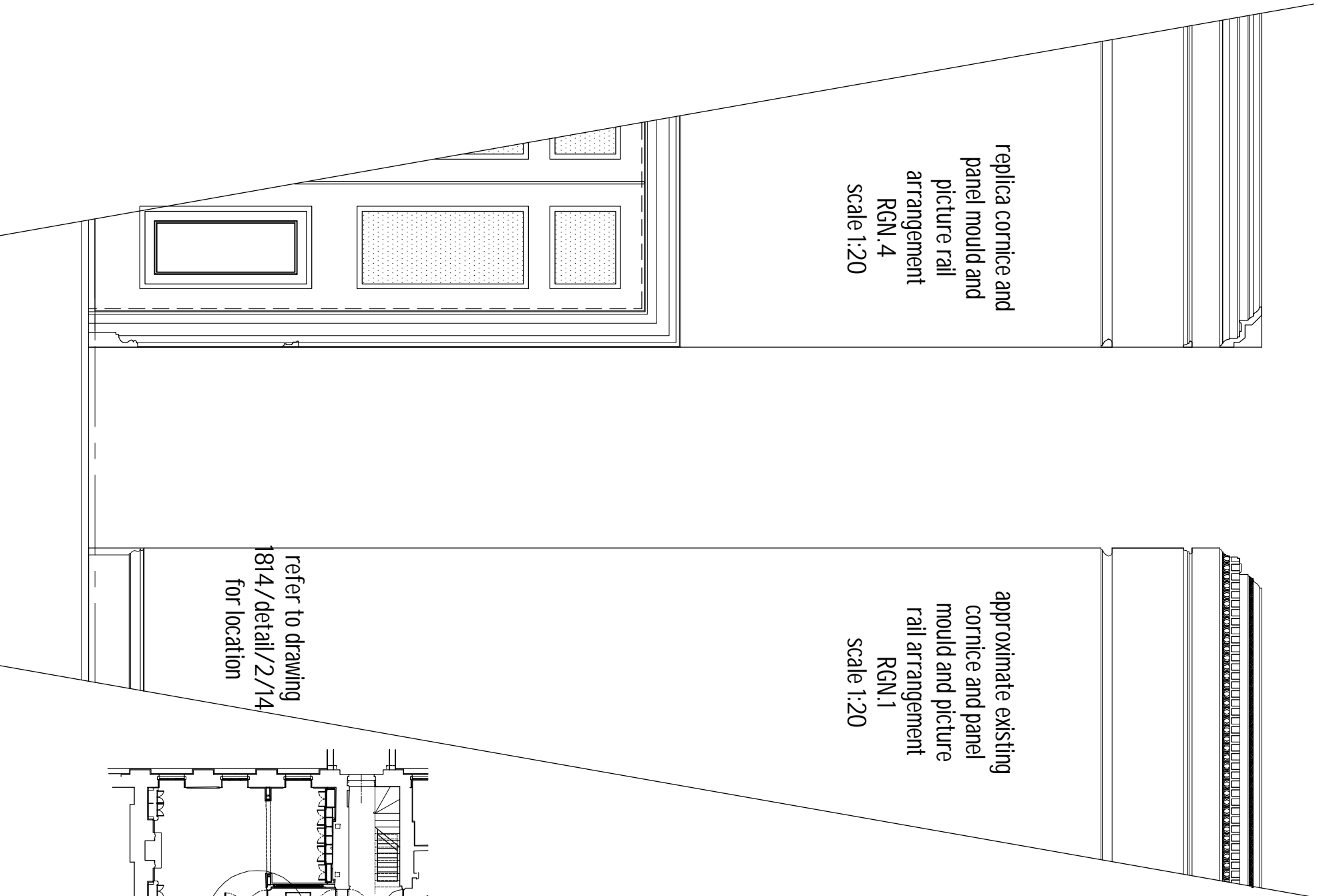
lbc

1814/4/7/detail



refer to drawing
1814/detail/2/10
for location

lbc





Bookshelves to adapt to cupboards
RGN.3
1814/4/1/detail



Inner oak pattern
DGN.1
1814/4/3/detail



Chair rail pattern
RGN.3, RGN.4, RGN.5
1814/4/2/detail



Skirting pattern
RGN.3, RGN.4, RGN.5
1814/4/2/detail



Two part cornice RGN.2
RGN.3
1814/4/8/detail



Panelled door pattern
DGN.6 & DGN.7
1814/4/5/detail



Detail of panel pattern
DGN.6 7 DGN.7
1814/4/5/detail



Three part cornice RGN.1
RGN.4
1814/4/9/detail



Window apron panel arrangement WGN.2
WGN.3
1814/4/5/detail

Detail photographs to accompany the proposed details
Alterations, Ground Pair North and South 4 Stone Buildings, Lincoln's Inn, London WC2A 3XT, Chambers of George Bompas QC