

THERMINOX

Wood

Solid Fuel

Gas

Oil

Twin wall insulated system

High quality stainless steel twin wall pre-insulated "system chimney" for heating appliances.

A continuously welded liner provides a pressure and moisture resistant system when used with the optional Joint Seal, for applications requiring pressure tightness up to 200 Pa.

Model options:

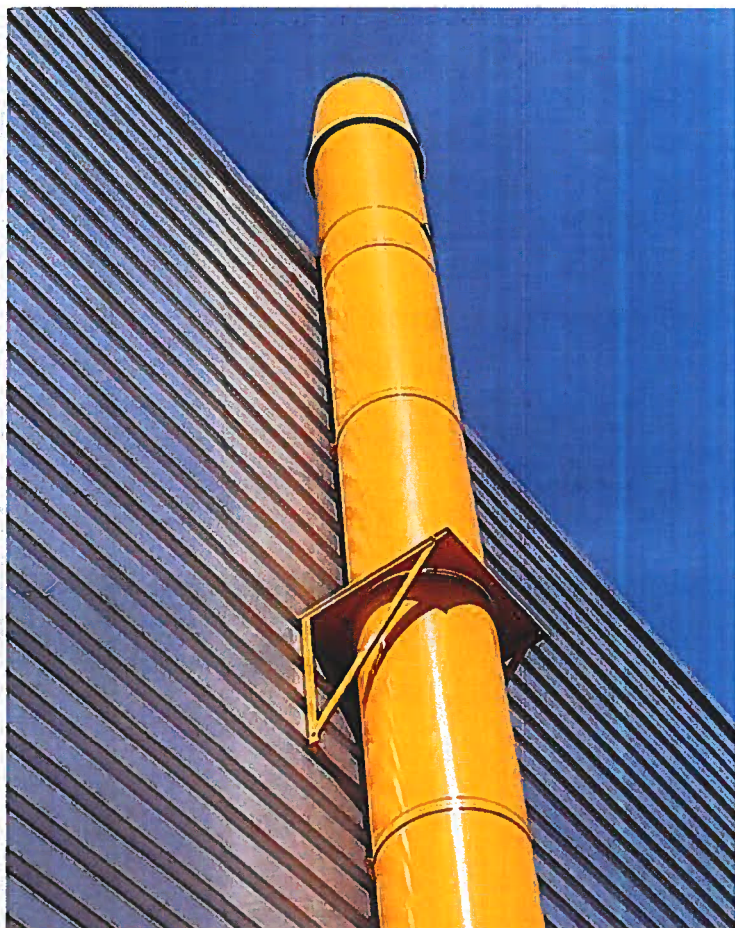
TI for external and internal use

ZI for internal use only

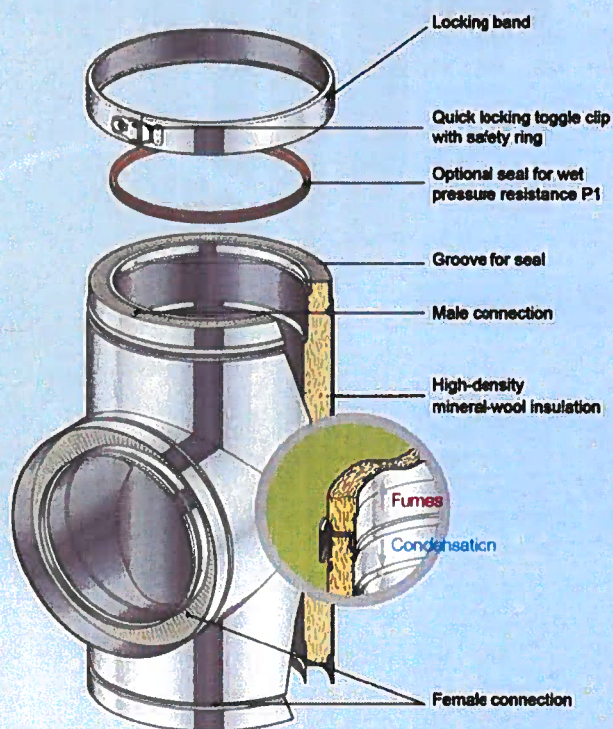
Factory painted to a RAL Number colour

CE marked and designated as suitable for use with all gas, oil, pellet and wood burning appliances, whether these are atmospheric, pressure-jet, or fully condensing.

Complete with a comprehensive range of standard accessories to suit all applications and environments

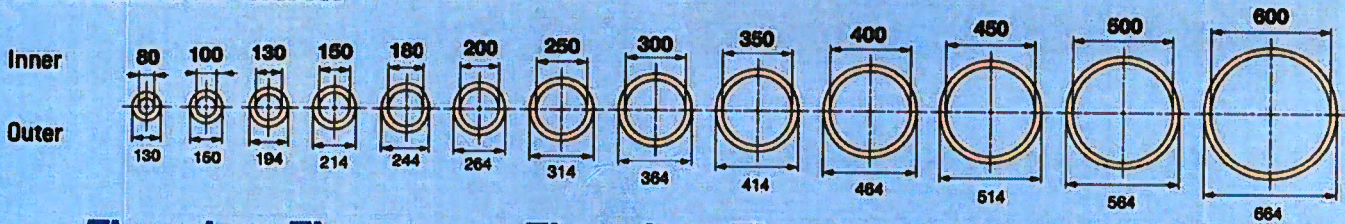


BENEFITS

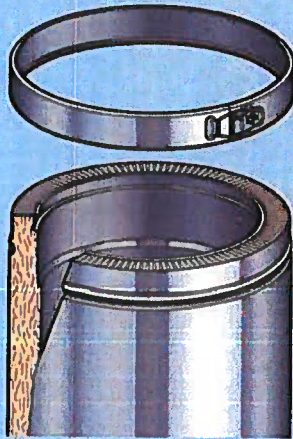


- **OPTIMISATION:** High thermal performance ensures maximum efficiency of chimney operation and minimum use of space in the building with rapid stabilisation of flue gas temperatures to optimise chimney operation.
- **PERFORMANCE:** CE marked BSEN 1856-1 and 4 hour fire rating to BS476.
- **SAFETY:** Exceptionally strong joints only require brackets at 4 metres intervals, with up to 16 metres on a base support with up to 3 metres free-standing capability.
- **INSTALLATION:** easy to install : Simple push fit joints secured with quick action toggle clip Locking Band, wide range of quality engineered support components with exceptional ability to adjust to suit the building fabric.
- **INNOVATION:** Perfect adaptor solutions to all appliance outlets and type, providing a correct sealed connection.
- **AESTHETIC:** Exceptionally good looking chimney with recessed locking bands integrated support bracketry plus excellent flashing/ weather plate arrangements, to suit all roof types.

Technical data

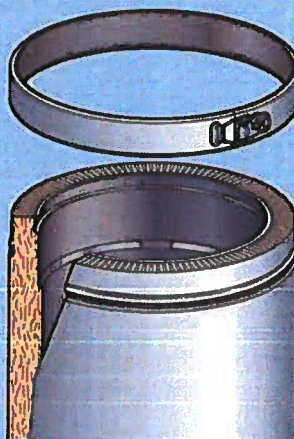


Therminox TI External use



Inner: 316L
Outer: St. Steel

Therminox ZI Internal use



Inner: 316L
Outer: Aluzinc



CE 0071 CPD 011
BS EN 1856-1

Ø80 to Ø350

T450 N1 W V2 L50 040 G50
T250 N1 W V2 L50 040 O20
T200 P1 W V2 L50 040 O20*

Ø400 to Ø600

T450 N1 W V2 L50 050 G50
T250 N1 W V2 L50 050 O20
T200 P1 W V2 L50 050 O20*

* Requires joint seal

MATERIAL SPECIFICATION

Therminox TI & ZI

Inner Ø	80	100	130	150	180	200	250	300	350	400	450	500	600
Outer Ø	130	150	194	214	244	264	314	364	414	464	514	564	664
Inner wall Material	AISI 316L stainless steel												
Thickness	0.4 mm										0.5 mm		
Outer wall Therminox TI	Stainless steel												
Outer wall Therminox ZI	Aluzinc												
Thickness	0.4 mm								0.5 mm		0.6 mm		
Insulation	High pressure injected mineral wool 130 Kg/m³												
Thickness	25 mm			30 mm									
Thermal resistance TI in m²·K/W by 200°C	0.45	0.45	0.533	0.531	0.529	0.529	0.528	0.527	0.527	0.527	0.527	0.527	0.527

Chimney BSEN 1856-1 : Cert. 0071-CPD-0011 (TI/ZI)

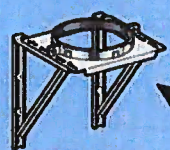


0071-CPD-0011
0071-CPD-0012

	Normal operating temperature	Pressure level	Resistance to condensate	Corrosion resistance	Inner wall thickness	Thermal performance
	T450 = 450°C T200 = 200°C T160 = 160°C	N1 : negative pressure P1 : positive pressure (up to 200 Pa)	W = wet (condensation) D = dry (no condensation)	Inner wall material V2L50 = Mat. Nr 1.4404 (AISI 316L)	040 = 0.4 mm (Ø80-350) 050 = 0.5 mm (400-600)	G : sootfire resistant Distance to combustible mat. 50 mm min. D : not for sootfire resistant use Distance to combustible mat. 20 mm min.
TI/ZI without seal	T450	N1	W	V2L50	040	G50
TI/ZI without seal	T250	N1	W	V2L50	040	O20
TI/ZI with seal	T200	P1	W	V2L50	040	O20
TR/ZR* without seal	T160	N1	W	V2L50	040	O20
TR/ZR* with seal	T160	P1	W	V2L50	040	O20

* TR/ZR Air Gap insulated, available to order

GENERAL PRINCIPLE



Wall Support:
the clamp of the split plate
is fixed in the upper groove
of the outer case

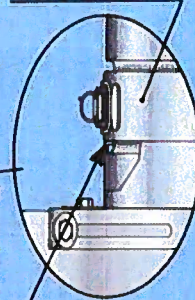
SMI



Wall Bracket:
The split ring securely
clamps to the flue section
using captive nuts and bolts

CMI

**Locking Band with
safety ring**



3m max.
with reinforced Locking Band
(C&U)

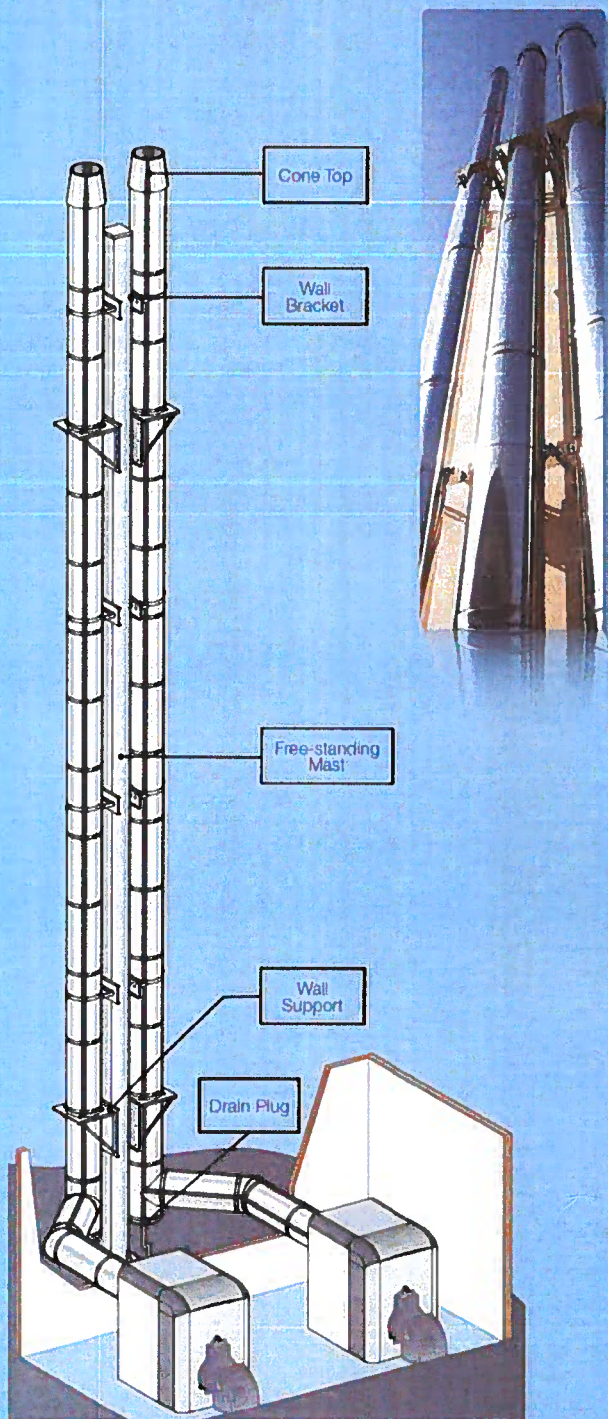
**Upper edge of
wall support bracket
fixed in the groove
of the outer case**

A wall support every 16m max. and every 12m for THERMINDX 500 and 600

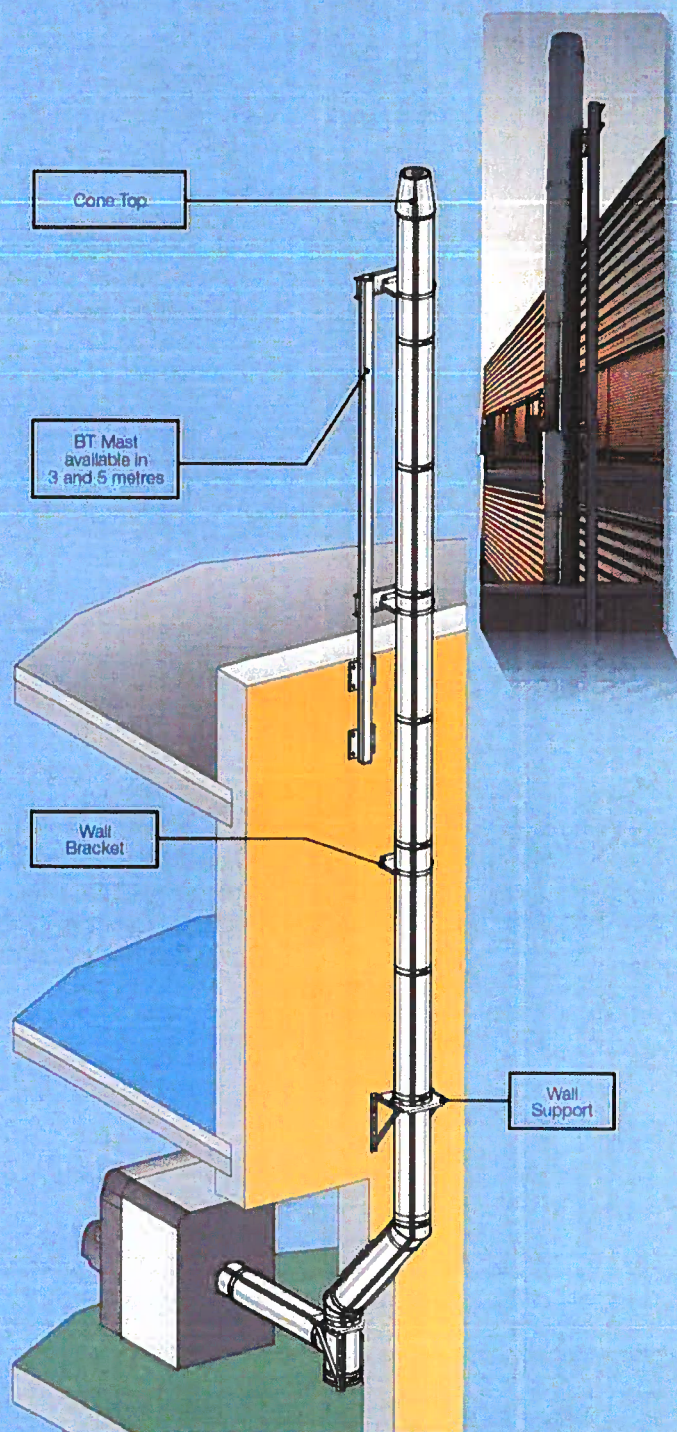
A wall bracket every 4m

OTHER APPLICATION EXAMPLES

THERMINOX ON «A FREE-STANDING MAST»

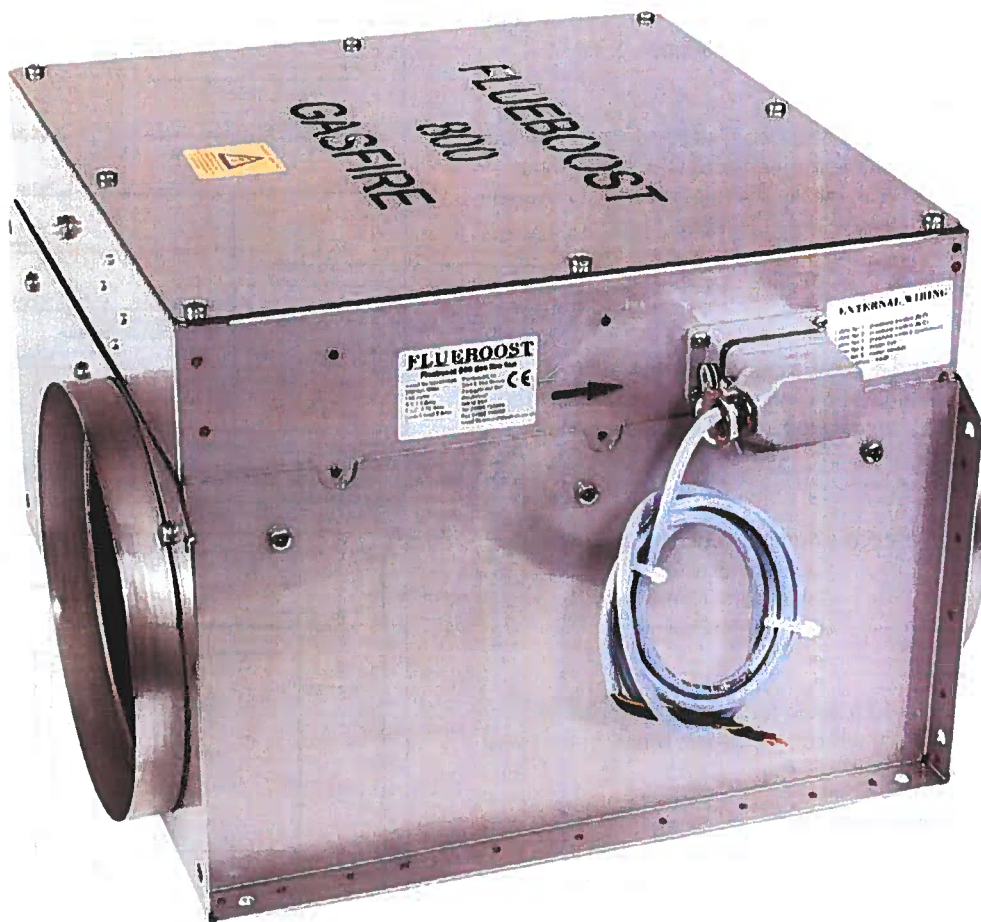


THERMINOX WALL MOUNTED WITH EXTENSION POUJOLAT BT WALL MAST



800 FLUEBOOST

flueboost 800 • gas fire model



The flueboost is a box shaped unit with in line spigots for the flue connection, a pressure switch to ensure safe operation and plug-in electrical fittings for easy connection, all within a compact package.

H E L P L I N E

01565 755599

