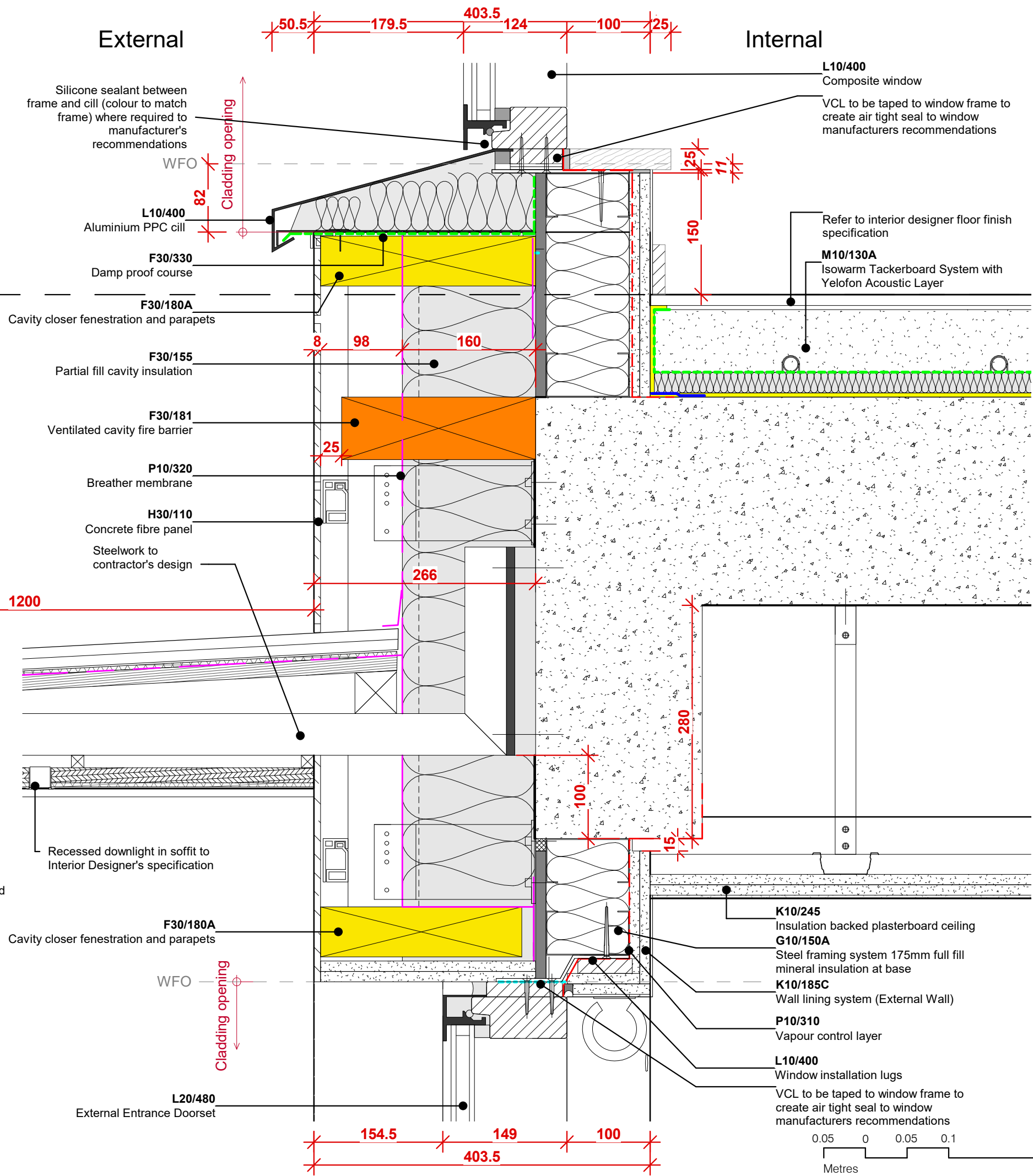


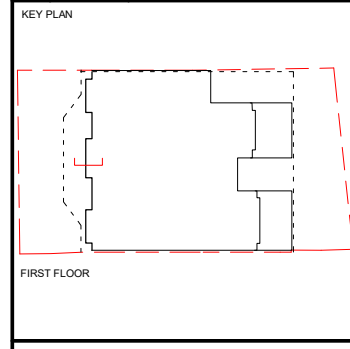
- Notes:
1. This drawing is to be read in conjunction with relevant specification documents, structural engineer drawings and subcontractor drawings. Information shown is subject to manufacturer and subcontractor coordination.
 2. This drawing shows the design intent and will be superseded by subcontractor drawings and information.
 3. Coordination between subcontractors is necessary to ensure the correct installation of external fenestration elements.
 4. Where noted, movement of fixing is required to accommodate deflection of structure. Assumed SFS will accommodate elsewhere. To be confirmed by subcontractor.
 5. Any penetrations through the VCL must be made air tight by the relevant installer.
 6. EPDM lapping to CP board forms waterproof line.
 7. CP board to be suitably taped and sealed with tolerance for movement.
 8. Sequencing between membranes to be reviewed with subcontractors, and to refer to construction details for lap arrangement.
 9. Weephole locations set to align across elevations.
 10. All fixings and mullion/transom depths to be reviewed with subcontractor.

Level 01
41725



Do not scale from this drawing. Contractor to check and verify all building and site dimensions, levels and sewer invert levels at connection points before work starts.
This drawing is to be read and checked in conjunction with information provided by the engineers and other specialists.

REV	DATE	DESCRIPTION
T1	15.05.19	Tender Issue
C	21.10.19	Construction Issue



INFORMATION
Envisaged sequencing TO BE REVIEWED BY CONTRACTOR, SUBCONTRACTOR & WINDOW & DOOR SUPPLIER
Relates to all (520) series drawings
Sequencing between membranes to be reviewed with subcontractors. Refer to construction details for lap arrangement.

1. Concrete frame erected.
 2. SFS installed.
 3. CP board fixed and taped to seal.
 4. Breather membrane applied, lapped and taped to seal.
 5. Windows and external doors installed with all required flashings.
 6. Fenestration EPDMs lapped and bonded to CP board. Breather membrane lapped and taped to EPDMs.
 7. Brickwork / masonry erected with partial fill cavity insulation.
 8. Insulation installed within SFS zone.
 9. VCL applied and lapped to structure and external door and window frame EPDMs.
 10. Plasterboard lining installed internally.
- NB: EPDM lap to CP board forms waterproof line.
NB: VCL lap to structure and external door and window frames forms airtightness line.

PROJECT
115-119 Goldhurst Terrace

DRAWING TITLE
Fenestration Detail-Bay Window Head and Base in Fibre Board Cladding

SCALE
1:5 @ A3

DRAWING NUMBER
GTR-LGA-00-DR-A-520-01

CONSTRUCTION

REV
C