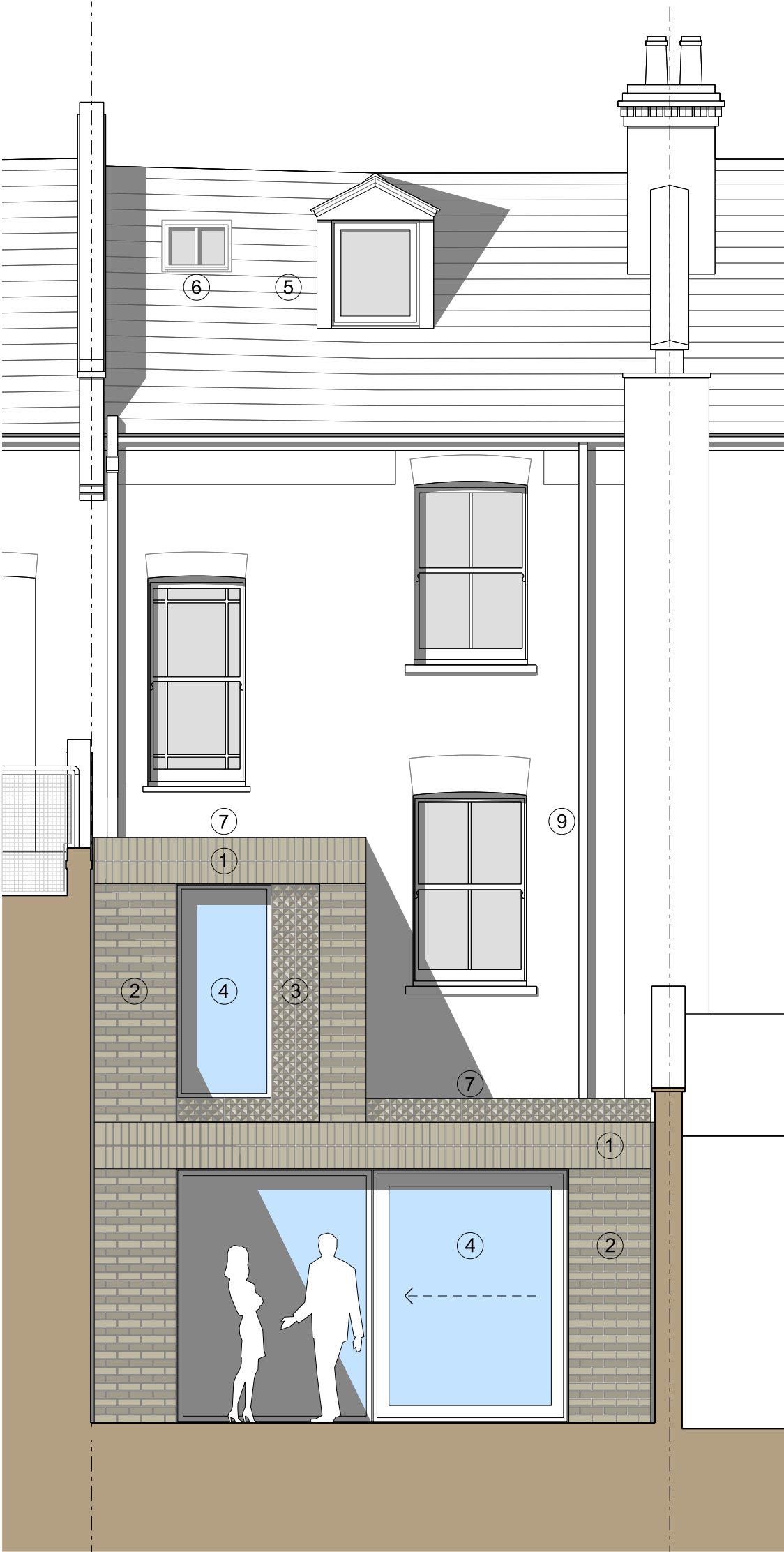




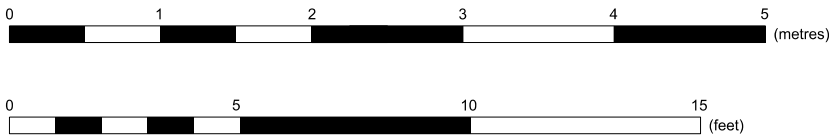
FRONT (OAKFORD ROAD) ELEVATION



REAR ELEVATION

Elevational Materials:

- ① Buff / Yellow Multi Stock Soldier Course Brickwork with Raked Lime Mortar Pointing
- ② Buff / Yellow Multi Stock Banded Brickwork with Raked Lime Mortar Pointing
- ③ Decorative Glazed Terracotta Tiling Detail to Match the Tone of the Adjacent Brickwork
- ④ Double Glazed Windows and Sliding Door with Powder Coated Aluminium Frames
- ⑤ Existing Dormer Window
- ⑥ Flush Fitting 'Conservation' Style Double Glazed Rooflights
- ⑦ Grey Single Ply Membrane 'Flat' Roof (or Similar Approved)
- ⑧ Grey Slate Roof Tiles to Remain as Existing
- ⑨ Black Cast Iron Rainwater Goods (or Similar Approved) Throughout



REV A - Planning Application Submission - April 2020

BLOCK³ ARCHITECTS

HOLLY COTTAGE, BAVENEY WOOD, NR KIDDERMINSTER, DY14 8JB

T +44 (0)1299 841111

E info@b3a.co.uk

W www.b3a.co.uk

TITLE:
O.R.L. 17 Oakford Road, Kentish Town, London
Elevations - Proposed

DRG. NO: L (-) 004

DATE: April 2020

SCALE: 1:50 @ A2

REV: A