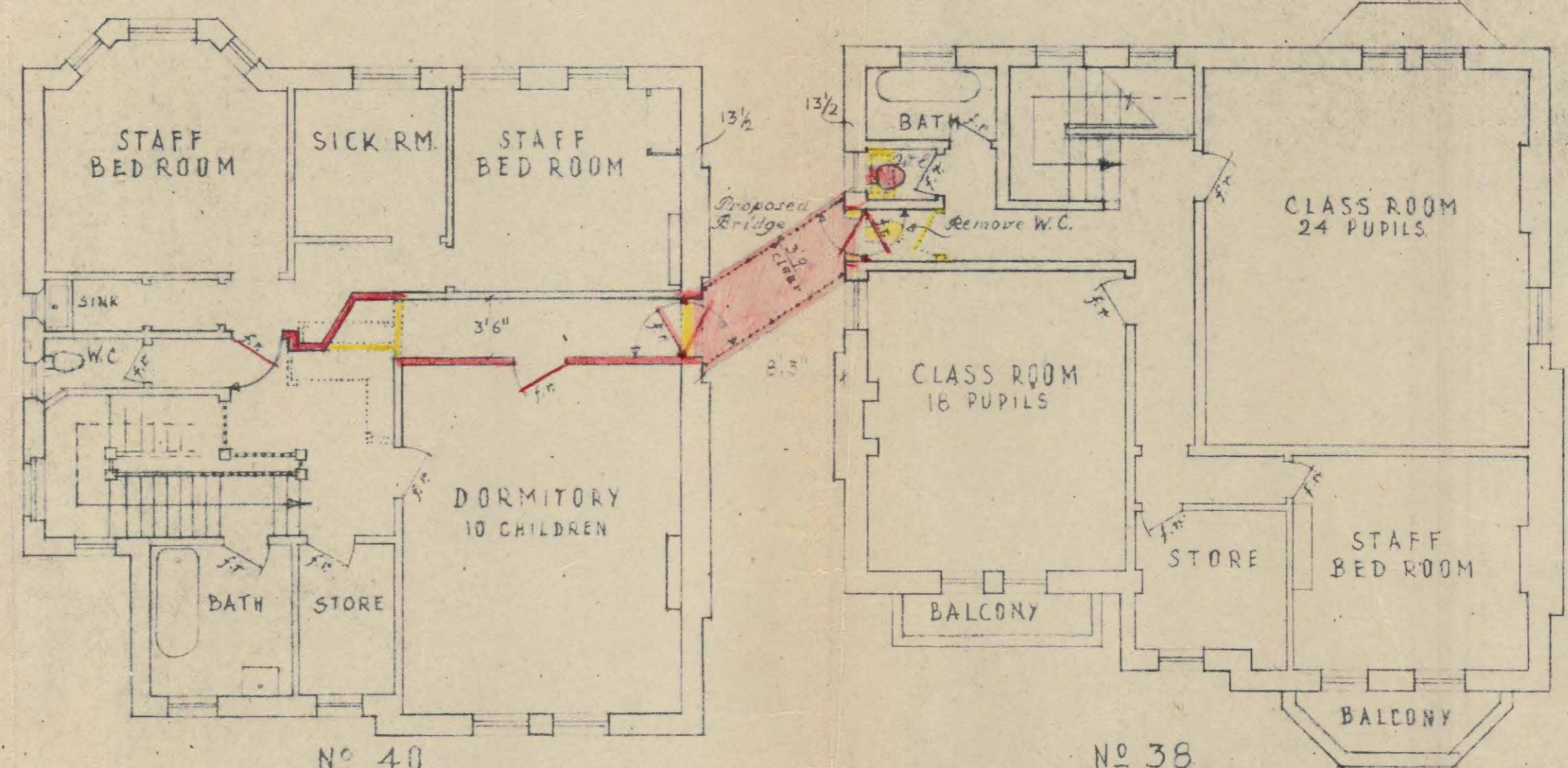
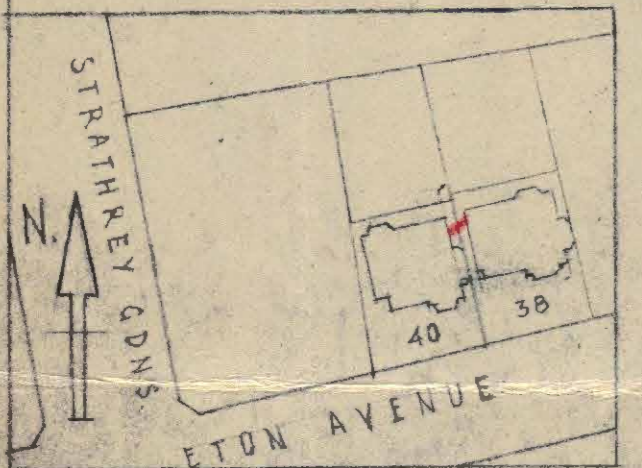


GROUND FLOOR PLANS

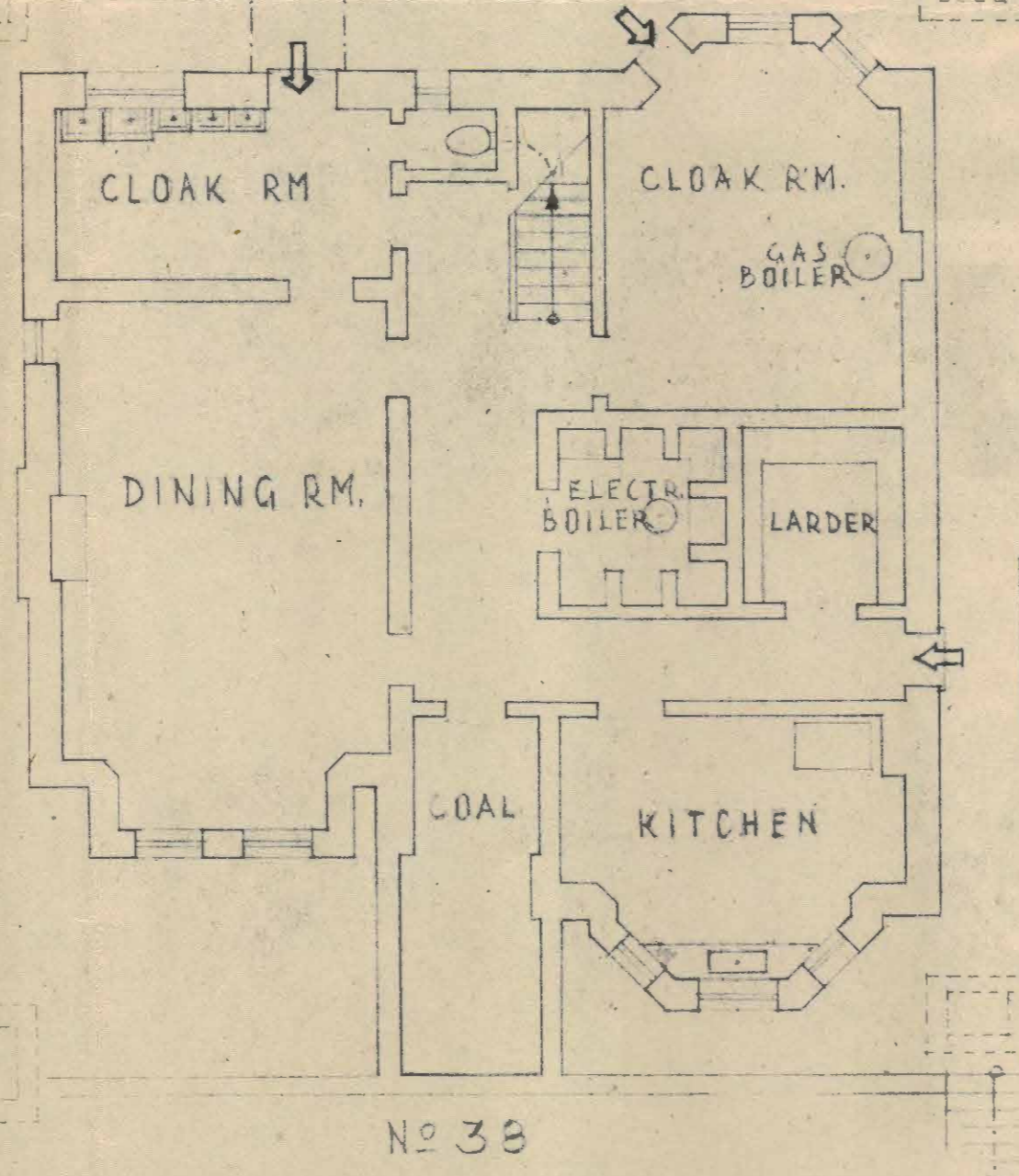
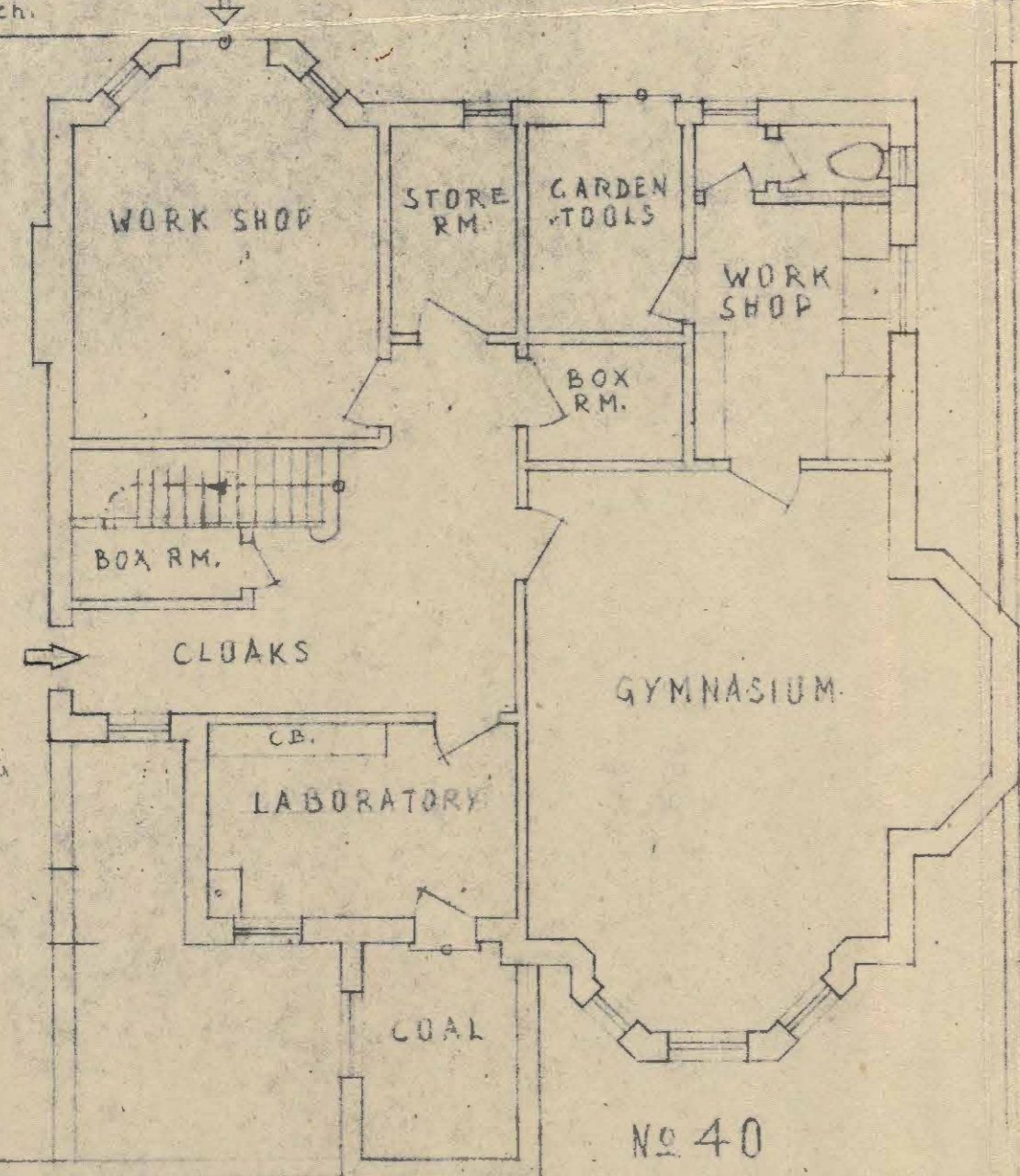


TOP FLOOR PLANS

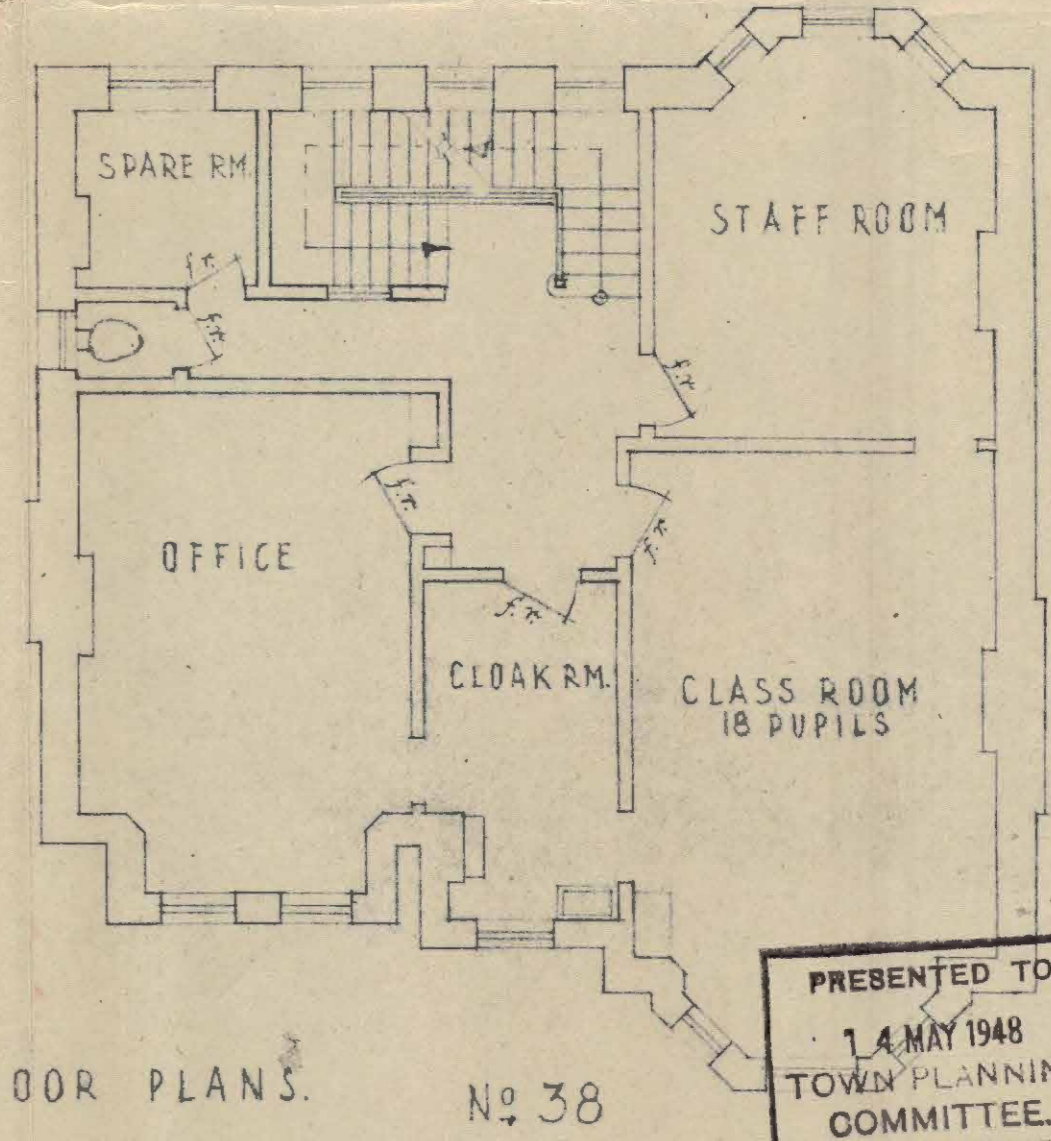
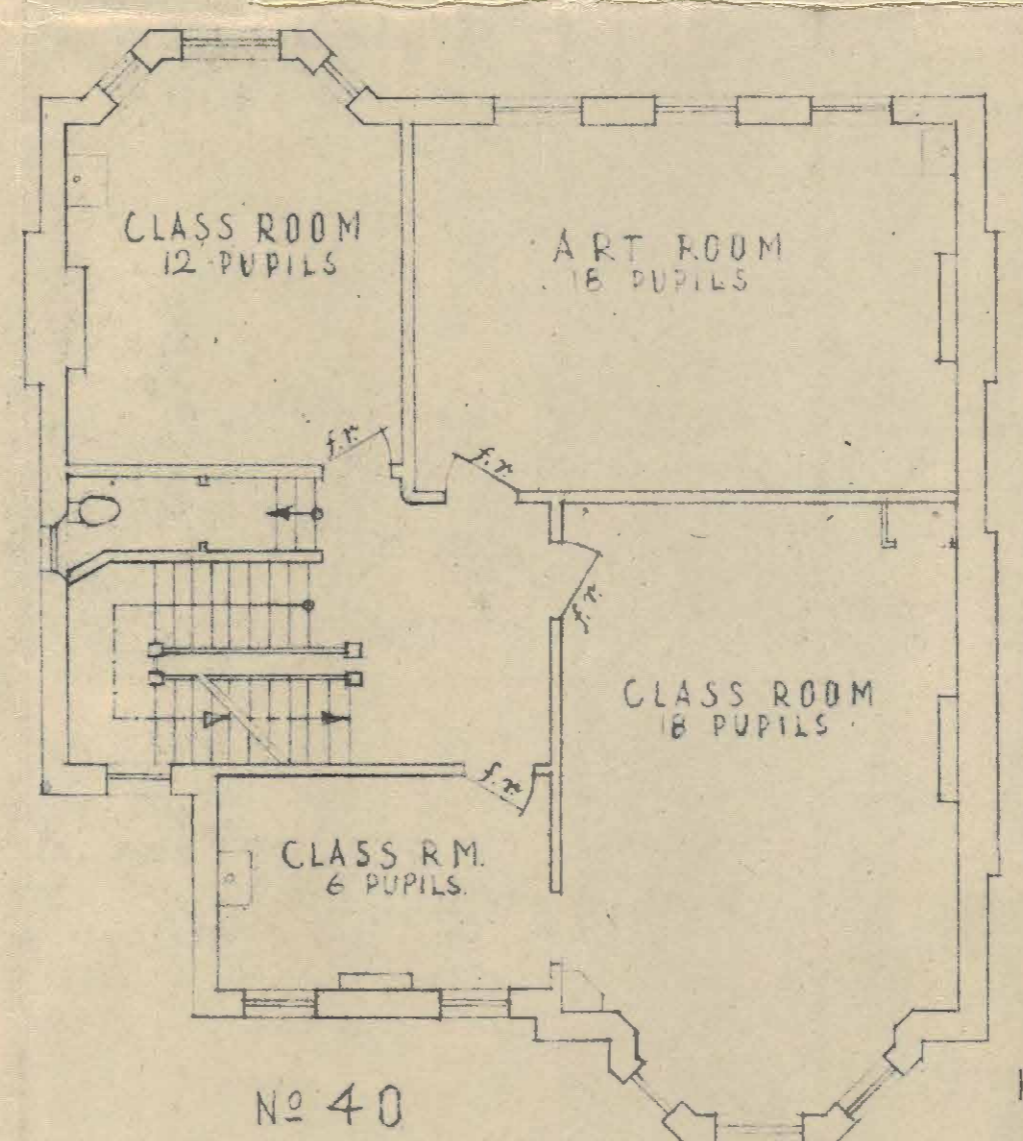


BLOCK PLAN  
88ft to 1 inch.

40 & 38 ETON AVENUE N.W.3.  
ST. MARY'S TOWN and COUNTRY SCHOOL  
PROPOSED FIRE ESCAPE BRIDGE SCALE 1/8" to 1".



BASEMENT PLANS



1st FLOOR PLANS

NOTES  
to be removed =   
New features in Italics =   
- - - = fire resisting  
self closing door  
ARROWS point upwards.

DUGDALE AND RUHEMANN, ARCHITECTS,  
46, BELSIZE SQUARE, LONDON N.W.3. PRI. 4678 & 0068.

ARCHITECT L.C.C.  
NO. 12 APR 1948  
REC. REF. TO 00419

PRESENTED TO  
14 MAY 1948  
TOWN PLANNING  
COMMITTEE.

Drwg No 3  
30th MARCH, 1948  
J.D. Leman  
M. INST. R.A.