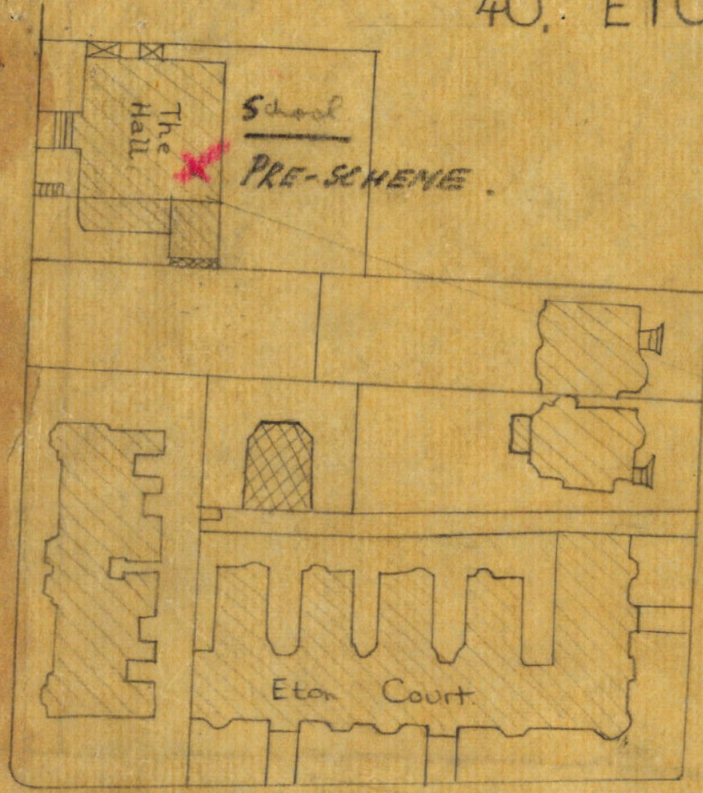
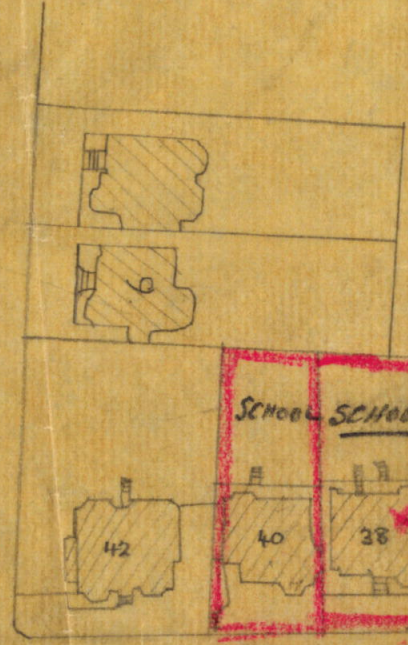


40. ETON AVENUE

PRESENTED TO  
20 MAY 1948  
TOWN PLANNING  
COMMITTEE.



STRATHFRY GARDENS



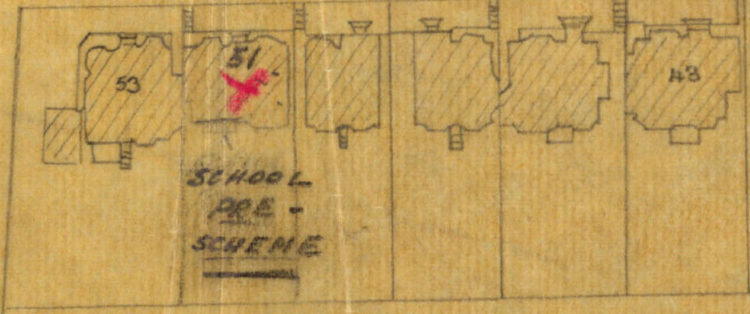
ETON

AVENUE

PRESENTED TO  
14 MAY 1948  
TOWN PLANNING  
COMMITTEE.



KING'S COLLEGE ROAD



PRESENTED TO  
16 MAR 1948  
TOWN PLANNING  
COMMITTEE.

TP 33183

SCALE 88' = 1"

BLOCK PLAN  
DATED 15 MAY 1946 O.S. 73