

- 

London Stock Brick
- 

Grey Brick
- 

Glazing
- 

Opaque glazing
- 

Black Metal
- 

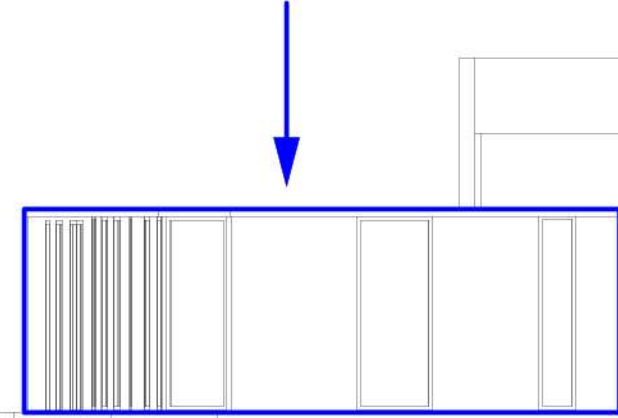
Champagne Cladding
- 


Off-white Cladding


Consented Drawing Planning reference
2015/0487/P dated 22nd December 2016





CONSented EXTENSION




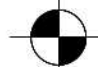
- 

R.1 FFL +46900
- 

4.1 FFL +43900
- 

3.1 FFL +40900
- 

2.1 FFL +37900
- 

1.1 FFL +34900
- 

G FFL +30670

SALVATION ARMY

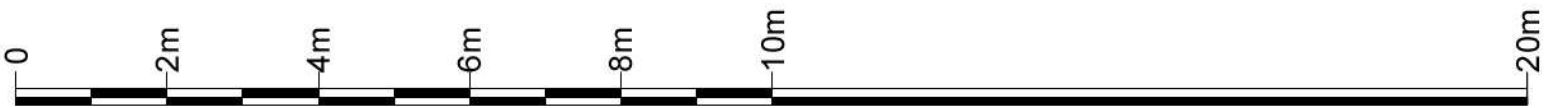
APPLICATION SITE

PUBLIC HOUSE

CROGSLAND ROAD

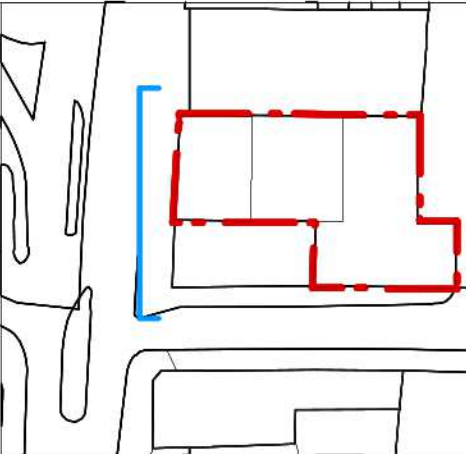
CHALK FARM HOTEL

A
GE.02
Proposed South West Elevation
1:200@A3_1:100@A1



Information contained within this drawing is the sole copyright of 21st Architecture Ltd, and is not to be reproduced without express permission. No implied licence exists. This drawing not to be used for land transfer or valuation purposes. Do not scale from this drawing. All dimensions & levels are to be checked on site by the contractor. Issued for purposes indicated only. Drawing errors and omissions to be reported to the architect.

Revisions		
A	26/11/14	General drawing revisions
B	16/12/14	General drawing revisions
C	07/01/15	General drawing revisions
D	15/01/15	Submitted for planning



Client	SRE Haverstock Hill Ltd
Project	Marine Ices Haverstock Hill, London, NW3 2BL
Drawing Title	Proposed South West Elevation General Arrangement



Twenty First Architecture Ltd,
314 Goswell Road,
London,
EC1V 7AF
Tel: +44(0)20 7062 0282
www.21starchitecture.com

Status	Planning	Drawn	IS	Checked	TJS
Scale	1:100 @ A1 1:200 @ A3	Date	Nov 2014	Revision	D
Dwg. No.	177_GE_02				