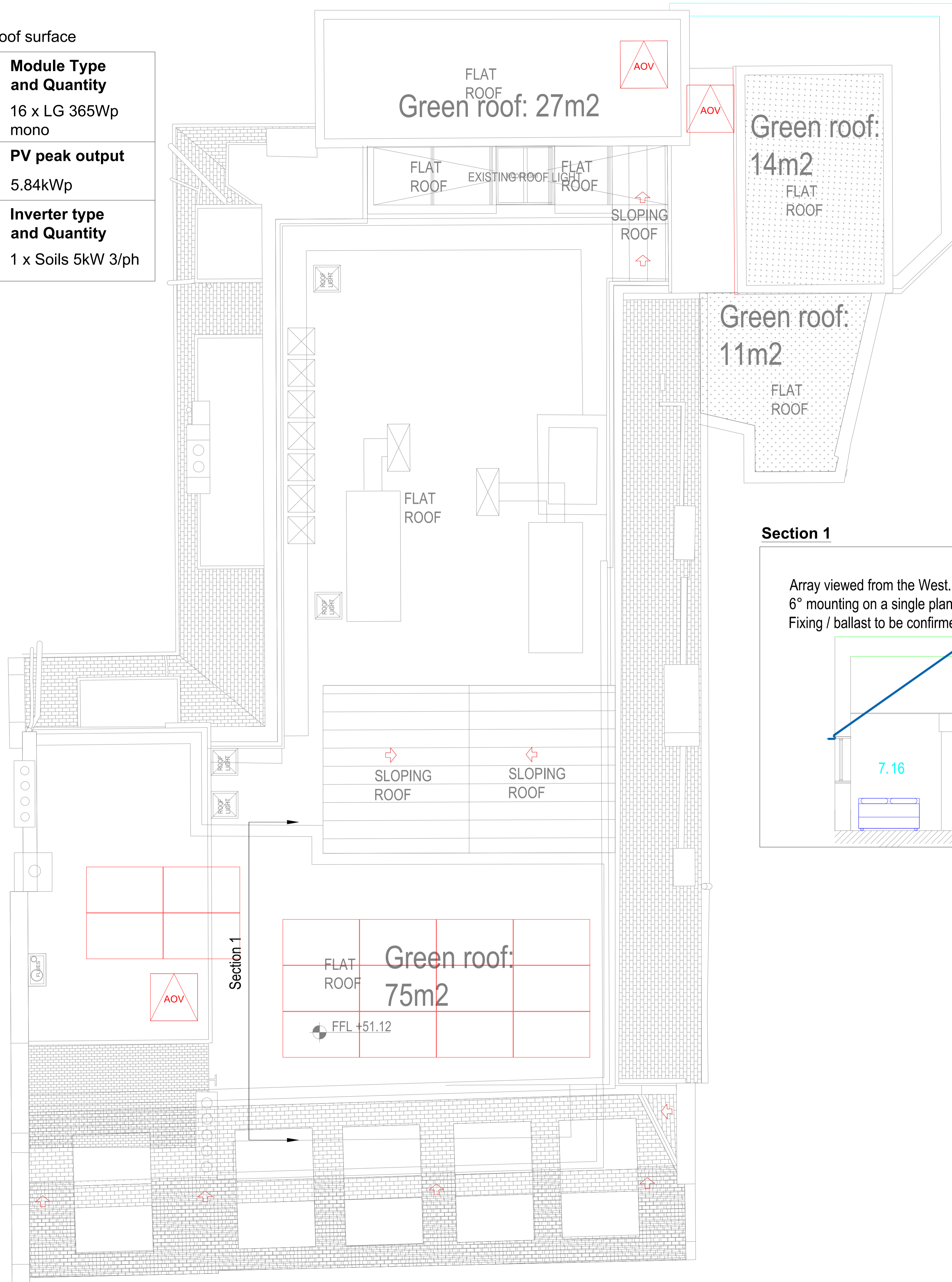
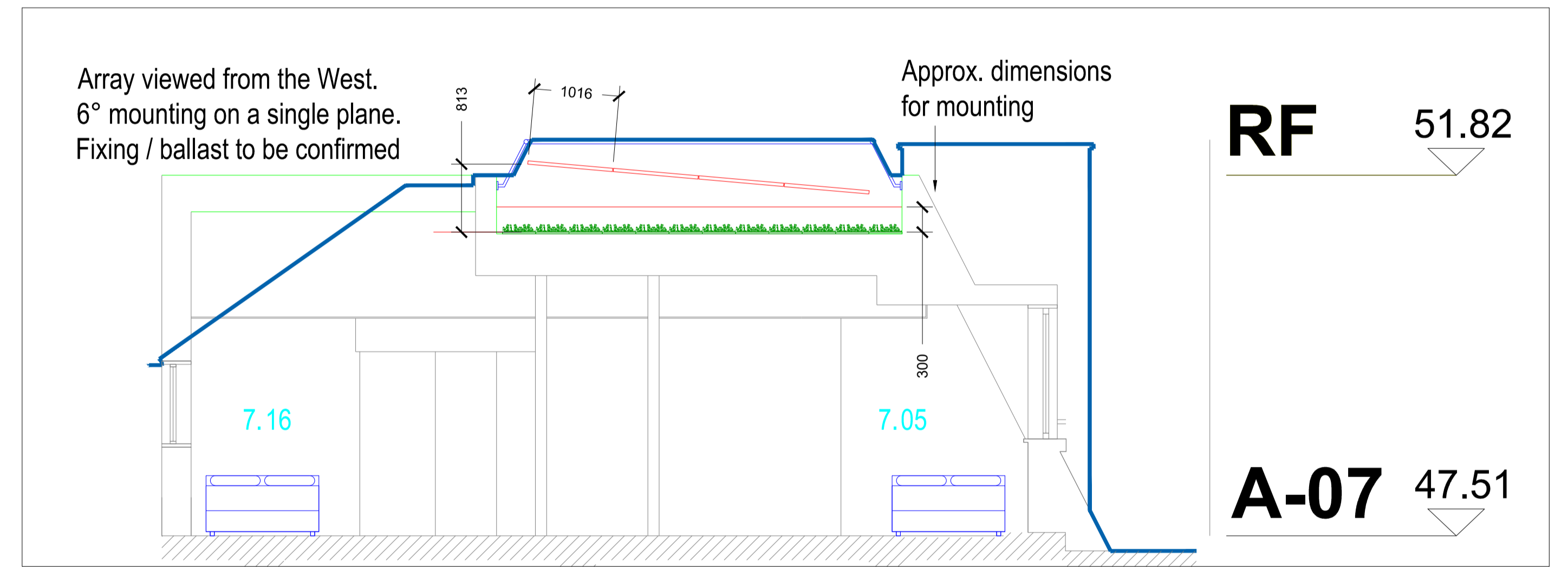


NOTES:
View is at 90° to roof surface

Module Length	Module Type and Quantity
1700mm	16 x LG 365Wp mono
Module Width	PV peak output
1016mm	5.84kWp
Module depth	Inverter type and Quantity
40mm	1 x Soils 5kW 3/ph



Section 1



RF 51.82

A-07 47.51

P2	09/04/19	AMcG	JM	ARRAY SPLIT TO ALLOW FOR MAINTENANCE ACCESS
P1	08/02/19	RW	JM	FOR APPROVAL
REV	DATE	BY	CKD	DESCRIPTION

kanegroup Building Services
Unit 18-19 Scarva Road
Industrial Estate | Banbridge | BT22 3OD
tel 028 4377 8484 | fax 028 4377 8116
INFO@KANEGROUPBS.COM
WWW.KANEGROUPBS.COM

PROJECT TITLE
4 WILD COURT
LONDON
WC2B 4AU

DRAWING TITLE
ROOF LEVEL
SOLAR PV ARRAY INSTALLATION

DRAWN	DATE	CHECKED	DATE
AMcG	07/02/19	MMcM	08/02/19

DRAWING STATUS
FOR APPROVAL

JOB NO	DRAWING NO	REV
C0694	KG-XX-XX-DR-E-90_001	P2

SCALE @A1
1:50